

DESG.	DIMENSION	TOL.	REMARK
A	7/8	±.015	SHAFT LG. FROM MTG. SURFACE
B	3/8	±.005	BUSH. LG.
C		±.015	FLAT LG. (IF REQ.)
D		±2°	FLAT ANGLE (IF REQ.)
E		±.002	FLAT (IF REQUIRED)
F	17/32	±.010	KEY LOCATION (IF REQ.)
G			KEY LOCATION (IF REQ.)
M	3/16	±.010	
N	1/16	±.093	REAR SCR. EXT.
Q	3/16	±.031	REAR SHAFT EXT.
R	5/8		1st SEC. SPACING

REVISIONS						
ZONE	LTR	DESCRIPTION	DATE	E.M.N.NO	DRAFT	CHKD
	Ø	ORIGINAL RELEASE FOR PRODUCTION	5/19/69		GE	

TMC PART NUMBER: SW-8003 STAMP ON FRONT PLATE
 FRONT PLATE SHAPE: ROUND ✓ OR OBLONG

MECHANICAL SPECIFICATIONS:
 NUMBER OF SECTIONS- 1
 NUMBER OF POSITIONS- 12
 ANGLE OF THROW- 30°

CONTACTS:
 SHORTING TYPE, SECTIONS _____
 NON SHORTING TYPE, SECTIONS _____
 SILVER PLATED BRASS, SECTIONS _____
 SILVER ALLOY, SECTIONS _____

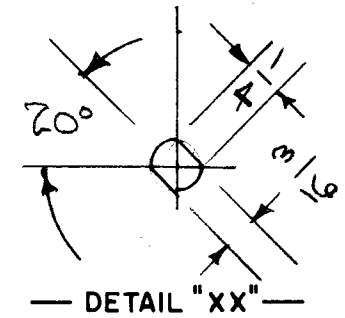
WAFERS:
 BAKELITE, SECTIONS _____
 CERAMIC, SECTIONS _____
 MYCALEX, SECTIONS _____
 IMPREGNATION (IF REQ.) _____
 ONE

FINISH REQUIREMENTS:
 ARMY _____ NAVY _____ COMMERCIAL ✓
 SALT TEST (IF REQ.) _____

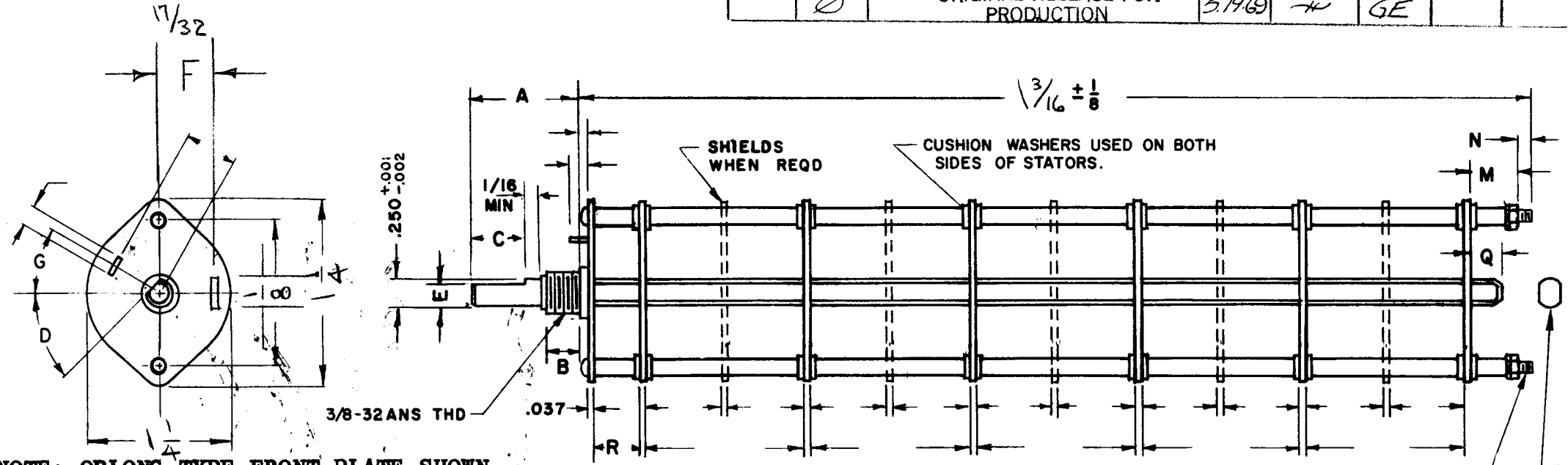
HARDWARE, TO BE SUPPLIED BY MANUFACTURER:
 1 QUAN. 3/8 -32 NUTS 1/2 ACROSS FLATS
 MATERIAL BRASS PLATING NICKEL
 1 QUAN. ✓ INTERNAL TOOTH LOCKWASHER
 MATERIAL BRASS PLATING NICKEL

ELECTRICAL SPECIFICATIONS:
 MAXIMUM RATED VOLTAGE _____
 MAXIMUM RATED CURRENT _____

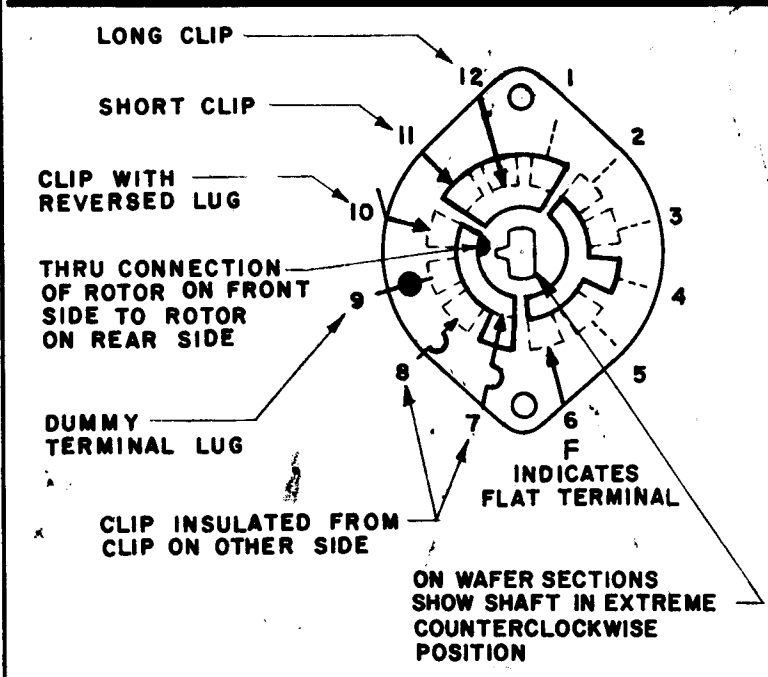
NOTE:
 FOR S401-13 ("F" TYPE) SWITCHES, THE SHAFT POSITION MUST BE SPECIFIED ON DETAIL "XX" BELOW.



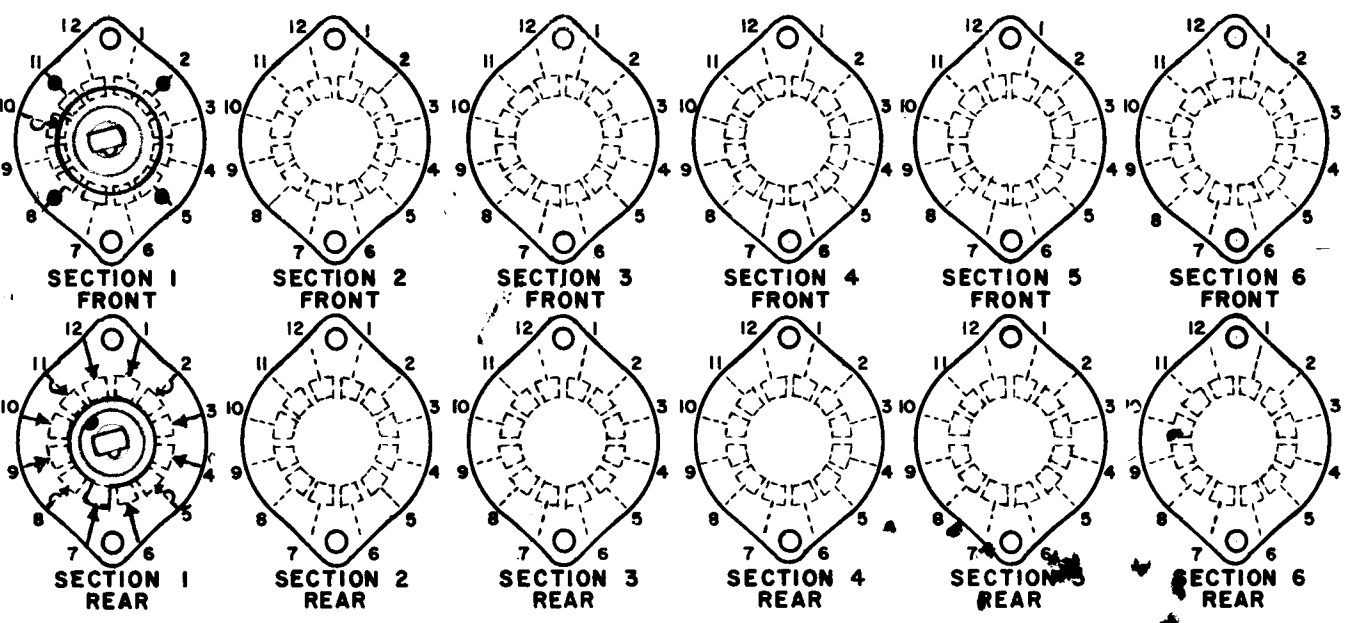
NOTES



NOTE: OBLONG TYPE FRONT PLATE SHOWN, (SEE MECHANICAL SPECIFICATION)



FRONT AND REAR SECTIONS VIEWED FROM FRONT OR KNOB END OF SWITCH IN EXTREME COUNTERCLOCKWISE POSITION. SEE NOTE (DET. "XX")



SYMBOLS USED IN MARKING PRINT

AX 8041

1	FEED THRU PHL 1/8	
QTY / UNIT	MODEL USED ON	ASS'Y NO.
APPLICATION		
	CODE	

NOTICE TO PERSONS RECEIVING THIS DRAWING
 THE TECHNICAL MATERIEL CORPORATION claims proprietary right in the material disclosed hereon. This drawing is issued in confidence for engineering information only and may not be reproduced or used to manufacture anything shown hereon without permission from THE TECHNICAL MATERIEL CORPORATION to the user. This drawing is loaned for mutual assistance and is subject to recall at any time.

UNLESS OTHERWISE SPECIFIED DIMENSIONS ARE IN INCHES AND INCLUDE CHEMICALLY APPLIED OR PLATED FINISHES	FINAL APPROVAL	DATE
MECH. DES.	<i>[Signature]</i>	5/26/69
ELECT. DES.		DATE
CHECKED	<i>[Signature]</i>	DATE
DRAWN	C. D. DEAN	DATE
		12-21-67
DECIMALS .X ± .05 .XX ± .01 .XXX ± .005	FRACTIONS 1/64	TOLS. ANGLES 0° -30'
MATERIAL		
FINISH		

THE TECHNICAL MATERIEL CORP. MAMARONECK, NEW YORK			
SWITCH, ROTARY			
SIZE	CODE IDENT. NO.	DWG NO.	ISSUE
B	82679	SW 8003	Ø
SCALE	SHEET		OF