

DESG.	DIMENSION	TOL.	REMARK
A	7/8	±.015	SHAFT LG. FROM MTG. SURFACE
B	3/8	±.005	BUSH. LG.
C		±.015	FLAT LG. (IF REQ.)
D		±2°	FLAT ANGLE (IF REQ.)
E		±.002	FLAT (IF REQUIRED)
F	17/32	±.010	KEY LOCATION (IF REQ.)
G			KEY LOCATION (IF REQ.)
M	3/16	±.010	
N	1/16	±.093	REAR SCR. EXT.
Q	3/16	±.031	REAR SHAFT EXT.
R	5/8		1st SEC. SPACING

REVISIONS						
ZONE	LTR	DESCRIPTION	DATE	E.M.N.NO	DRAFT	CHKD APPD
		ORIGINAL RELEASE	7/22/69			

TMC PART NUMBER: SW-8001 STAMP ON FRONT PLATE
FRONT PLATE SHAPE: ROUND OR OBLONG

MECHANICAL SPECIFICATIONS:
NUMBER OF SECTIONS- 1
NUMBER OF POSITIONS- 9
ANGLE OF THROW- 30°

CONTACTS:
SHORTING TYPE, SECTIONS _____
NON SHORTING TYPE, SECTIONS
SILVER PLATED BRASS, SECTIONS
SILVER ALLOY, SECTIONS _____

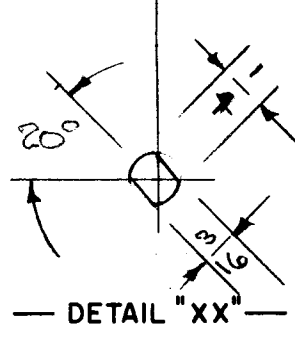
WAFERS:
BAKELITE, SECTIONS _____
CERAMIC, SECTIONS _____
MYCALEX, SECTIONS ONE
IMPREGNATION (IF REQ.) _____

FINISH REQUIREMENTS:
ARMY _____ NAVY _____ COMMERCIAL
SALT TEST (IF REQ.) _____

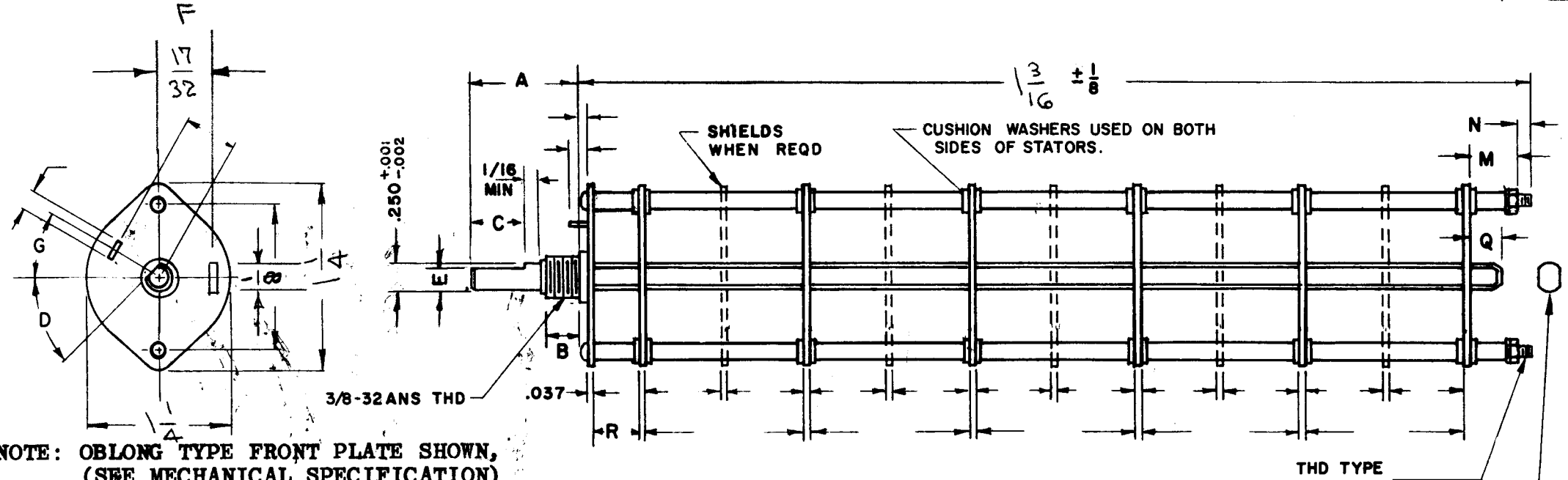
HARDWARE, TO BE SUPPLIED BY MANUFACTURER:
1 QUAN. 3/8 -32 NUTS 1/2 ACROSS FLATS
MATERIAL BRASS PLATING NICKEL
1 QUAN. INTERNAL TOOTH LOCKWASHER
MATERIAL BRASS PLATING NICKEL

ELECTRICAL SPECIFICATIONS:
MAXIMUM RATED VOLTAGE 50
MAXIMUM RATED CURRENT 100 MA

NOTE:
FOR S401-13 ("F" TYPE) SWITCHES, THE SHAFT POSITION MUST BE SPECIFIED ON DETAIL "XX" BELOW.

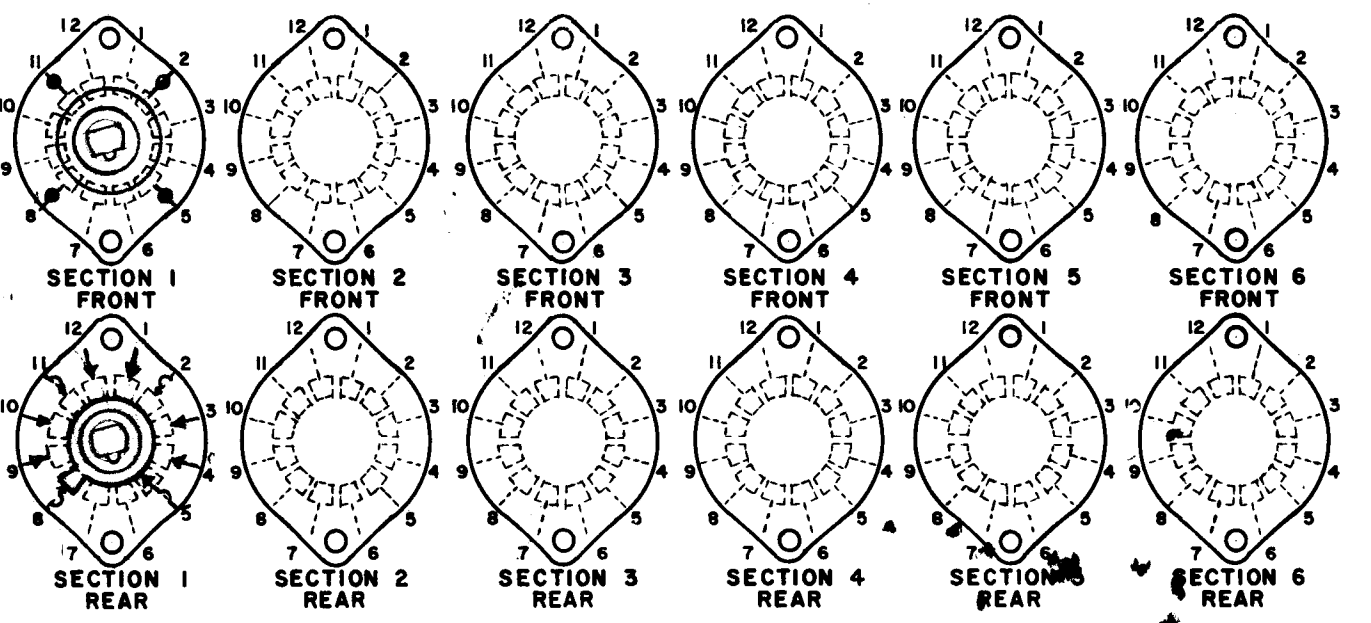
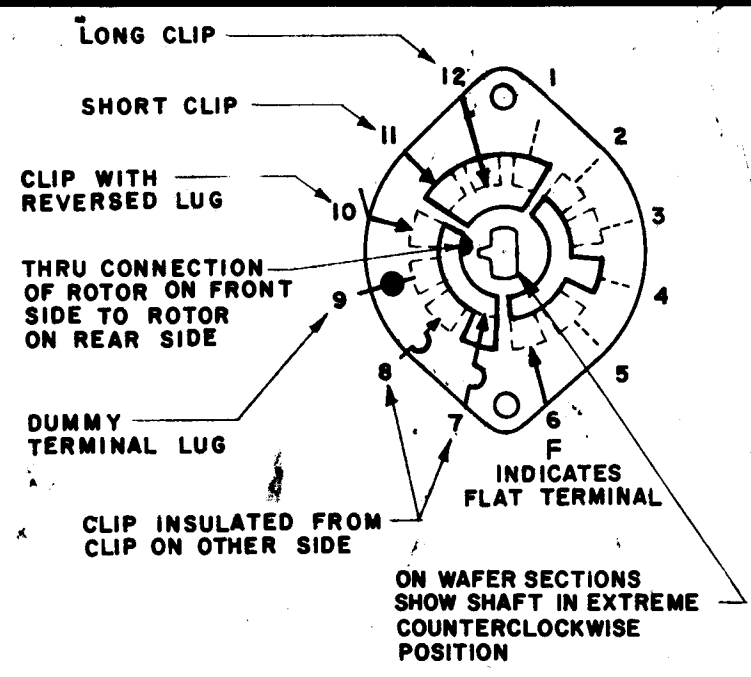


NOTES



NOTE: OBLONG TYPE FRONT PLATE SHOWN, (SEE MECHANICAL SPECIFICATION)

FRONT AND REAR SECTIONS VIEWED FROM FRONT OR KNOB END OF SWITCH IN EXTREME COUNTERCLOCKWISE POSITION. SEE NOTE (DET. "XX")



SYMBOLS USED IN MARKING PRINT

2	AVLC-1	
QTY / UNIT	MODEL USED ON	ASS'Y NO.
APPLICATION		
	CODE	

NOTICE TO PERSONS RECEIVING THIS DRAWING
THE TECHNICAL MATERIEL CORPORATION claims proprietary right in the material disclosed hereon. This drawing is issued in confidence for engineering information only and may not be reproduced or used to manufacture anything shown hereon without permission from THE TECHNICAL MATERIEL CORPORATION to the user. This drawing is loaned for mutual assistance and is subject to recall at any time.

UNLESS OTHERWISE SPECIFIED DIMENSIONS ARE IN INCHES AND INCLUDE CHEMICALLY APPLIED OR PLATED FINISHES		FINAL APPROVAL <i>JAM</i>	DATE <i>7/22/69</i>
MECH. DES.			
ELECT. DES.			
CHECKED			
DRAWN <i>C.D. DEAN</i>			DATE <i>7-27-69</i>
MATERIAL			
FINISH			

THE TECHNICAL MATERIEL CORP. MAMARONECK, NEW YORK			
SWITCH, ROTARY			
SIZE	CODE IDENT. NO.	DWG NO.	ISSUE
B	82679	SW 8001	<input checked="" type="checkbox"/>
SCALE	SHEET		OF