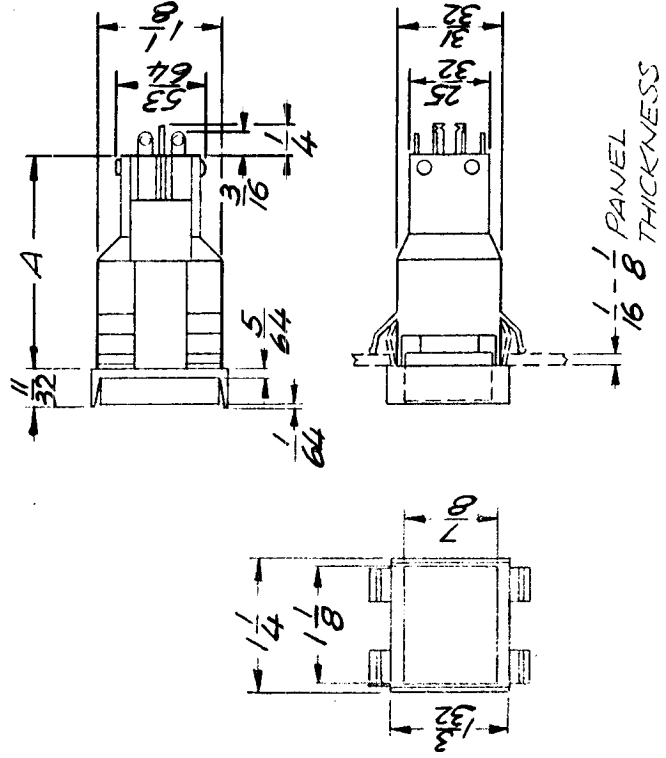


REVISIONS

QTY	MODEL USED OR	ASSY NO.	LTR	DESCRIPTION	DATE	L.I.N. NO.	DEPT	CHG'D BY	DATE
	4 PALA-10K	AX5082	X	EXP. RELEASE	12/27/68		KTT	MJD	
		Ø	Ø	ORIGINAL RELEASE FOR PRODUCTION	1/14/70		(C)		

TMC P/N.	MFG P/N	TYPE ACTION	NO. OF POLE	"A" DIM.
SW 522-1	01 - 865230	MAINTAINED ACTION	TWO	2.00"
SW 522-2	01 - 865630	MOMENTARY ACTION	TWO	1.56"



Operating Force 14 ± 4 oz.  
 Pretravel .093 max.  
 Overtravel .012 min.  
 Movement Diff. .020 ± .010

Momentary 96 oz. max.  
 .187 max.  
 .005 min.

ELECTRICAL RATING (each switch):  
 U. L. Listed—10 Amps @ 125/250 VAC

SEA LEVEL 50,000 Feet

28 VDC L/R = .026

Form X or Y Single Circuit  
 Res. 10 Amps  
 Ind. 7.5 Amps  
 Lamp 4 Amps

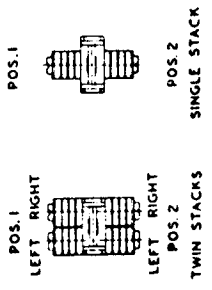
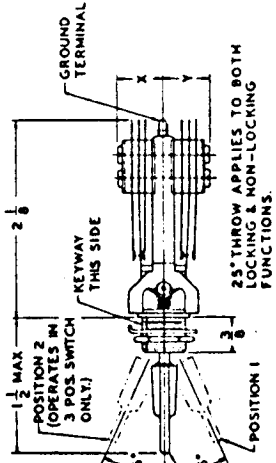
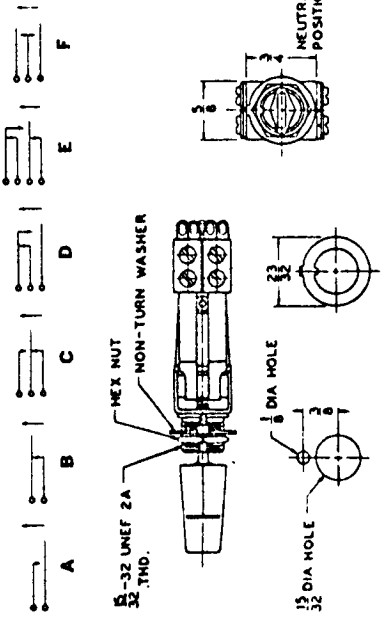
Form Z Two Circuit  
 Res. 10 Amps  
 Ind. 5 Amps  
 Lamp 3 Amps

Minimum expected basic switch life is 100,000 cycles at full rated load; 750,000 cycles at one-half rated load.

UNLESS OTHERWISE SPECIFIED DIMENSIONS ARE IN INCHES AND INCLUDE CHEMICALLY APPLIED OR PLATED FINISHES	REQ'D ITEM	PART NUMBER	DESCRIPTION	SYMBOL
DECIMALS .X ± .05 .XX ± .01 .XXX ± .005			LIST OF MATERIAL	
FRACTIONS 1/64 ANGLES 0°-30°			THE TECHNICAL MATERIEL CORP. MAMARONECK, NEW YORK	
MATERIAL			SWITCH, PUSH (H6-1)	
FINISH				
S 401 - 282				
FINAL APPROVAL [Signature]	DATE 1-13-70			
MECH. DES. [Signature]	DATE 1-8-70			
ELECT. DES.	DATE			
CHECKED [Signature]	DATE 1/15/70			
DRAWN [Signature]	DATE 12/29/68			
NOTICE TO PERSONS RECEIVING THIS DRAWING	SIZE A	CODE IDENT. NO. 82679	DWG NO. SW 522	ISSUE 1
THE TECHNICAL MATERIEL CORPORATION claims proprietary right in the material disclosed herein. This drawing is issued in confidence for engineering information only and may not be reproduced or used to manufacture anything shown hereon without permission from THE TECHNICAL MATERIEL CORPORATION to the user. This drawing is loaned for mutual assistance and is subject to recall at any time.	SCALE		SHEET	OF

APPLICATION			REVISIONS						
QTY	MODEL USED ON	ASS'Y NO.	LTR	DESCRIPTION	DATE	E.M.N.NO	DRAFT	CHKD	APPD
	PHLH-10K	AX508Z	X	EXP. RELEASE	12/1/69				
			Ø	ORIGINAL RELEASE	1/6/70				

TMC P/N	MFR P/N	STACK HEIGHTS		CONTACT ASSEMBLY
		DIM "X" MAX	DIM "Y" MAX	
SW523-1	41306	17/32	17/32	1-C
-2	41308	1/2	1/2	2-A
-3	41324	3/4	3/4	4-C



**MATERIAL SPECIFICATIONS**

**FRAME:** Steel, iridescent iridite finish over cadmium plating.

**BUSHING AND ACTUATOR:** Brass, nickel plated.

**SPRINGS:** Spring tempered nickel silver.

**CONTACTS:** Welded cross bar palladium. Fine silver and other alloys in various sizes available on special order.

**INSULATION:** Paper base phenolic spacers with plastic tubing through the stack assembly. Lifters of molded nylon.

**LIFTER-ROLLER ASSEMBLY:** Molded plastic.

**KNOB:** Supplied with a "Paddle" shaped, screw-on black plastic knob. Other colors such as red (M-1360-1), blue (M-1360-4) and white (M-1360-5) and/or styles such as the "Contour" knobs—Series M-1177; "Tear-Drop" knobs—Series M-1066 available on separate order.

**TERMINALS:** Solder, hot tin dipped.

**MOUNTING HARDWARE:** Supplied with one brass, nickel plated hex locknut (P-1053-1) and one non-turn washer (P-1063-9), steel, iridescent iridite finish over cadmium plating. See Catalog H-602 for details.

**PACKAGED:** 1 per standard distributor package.

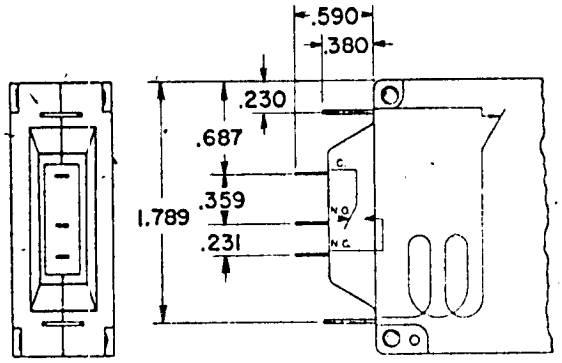
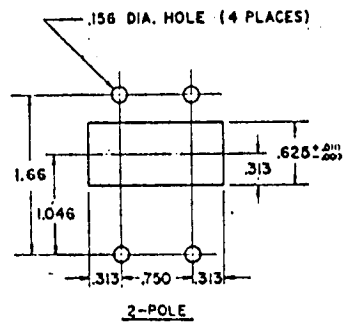
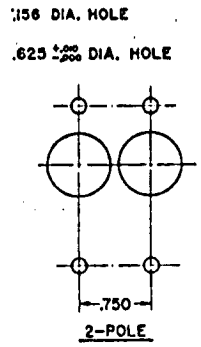
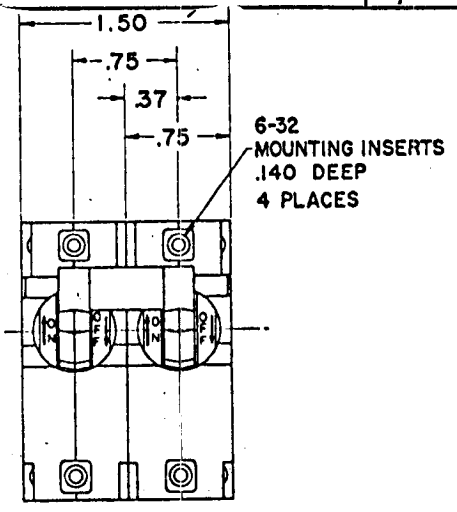
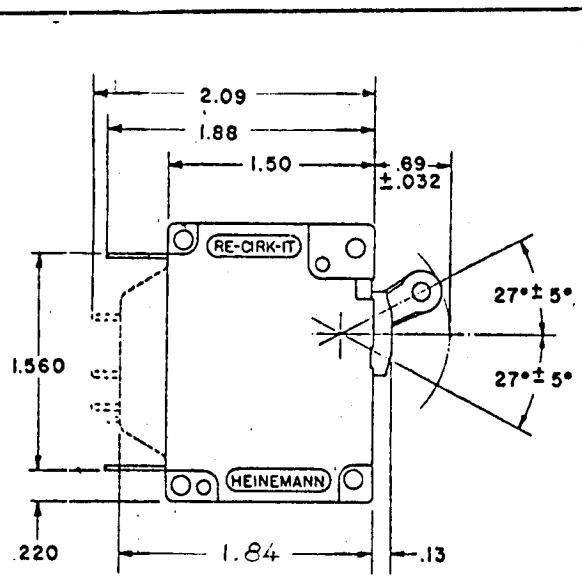
REQ'D ITEM	PART NUMBER	DESCRIPTION	SYM.
<b>LIST OF MATERIAL</b>			
<b>THE TECHNICAL MATERIEL CORP.</b>			
MAMARONECK, NEW YORK			
<i>SWITCH LEVER THREE POS.</i>			
SIZE	CODE IDENT. NO.	DWG NO.	ISSUE
A	82679	SW 523	Ø
SCALE		SHEET	OF

FINAL APPROVAL	DATE
<i>F. BUDETTI</i>	1-2-70
MECH. DES.	DATE
	1-2-70
ELECT. DES.	DATE
	1-2-70
CHECKED	DATE
<i>R. P. ...</i>	1-2-70
DRAWN	DATE
<i>F. HILL</i>	12/1/69

**NOTICE TO PERSONS RECEIVING THIS DRAWING**

THE TECHNICAL MATERIEL CORPORATION claims proprietary right in the material disclosed hereon. This drawing is issued in confidence for engineering information only and may not be reproduced or used to manufacture anything shown hereon without permission from THE TECHNICAL MATERIEL CORPORATION to the user. This drawing is loaned for mutual assistance and is subject to recall at any time.

REQ. PER UNIT	USED ON			SW527	D
	MODEL	ASS'Y. NO.	DATE		
1	GPTR-10KYA	AX 5081	12/10/69		

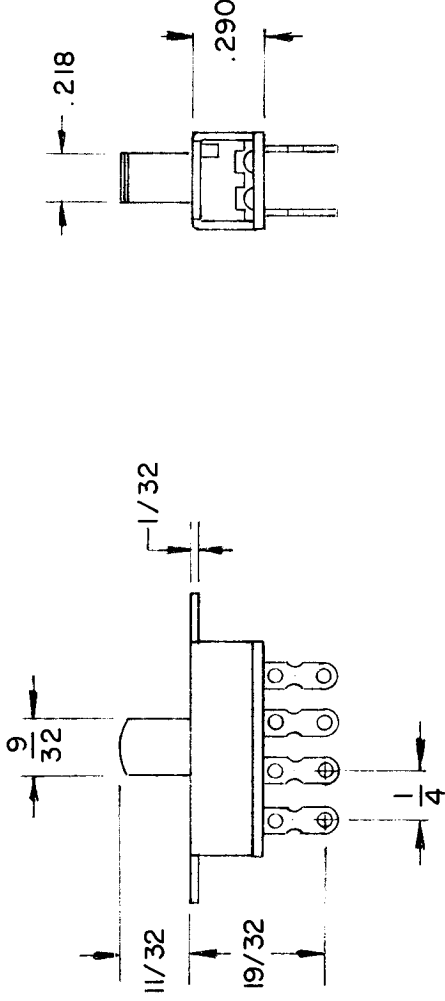
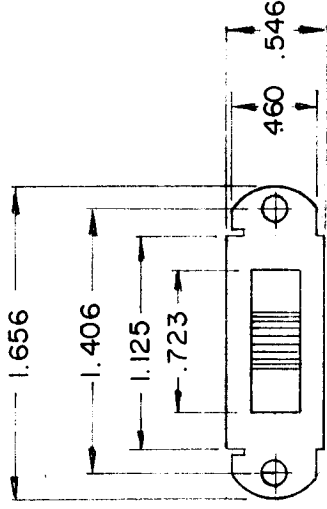


**Notes on panel layout**

1. To accommodate a nameplate immediately above or below the breaker's handle, mount the breaker with two 6-32 flathead screws to preserve a flush surface over which the nameplate can be placed. Countersink the .156" mounting screw holes with a 92° countersink to a .268" diameter. Note: Panel thickness must be at least .062".
2. Common cutout holes cannot be used for breakers with color caps. Use individual mounting holes as shown

REQ.	ITEM	PART NO.	DESCRIPTION			SYMBOL			
			THE TECHNICAL MATERIEL CORP. MAMARONECK, NEW YORK						
Ø	ORIGINAL RELEASE	12/10/69	STOCK SIZE						
X	EXP. RELEASE	12/10/69	CIRCUIT BREAKER						
ISSUE	ITEM	CHANGED FROM	DATE	CH. NO.	DRAFTS	CHECKER	ENG. APP.		
TOLERANCES			SCALE: 5401-58 (JA2-A2-10-2)						
DEC. DIM. ±			MAXIMUM ALLOWABLE TOLERANCES HAVE BEEN DETERMINED AND ANY DEVIATIONS WILL BE CAUSE FOR REJECTION. REMOVE ALL BURRS AND SHARP EDGES						
FRAC. DIM. ±									
ANGULAR DIM. ±									
TYPE & TEMPER		HEAT TREAT. SPEC.		DRAWN		CHECKED		FINAL APPROVAL	
FINISH & SPEC. NO.		ELEC. DES. APP.		MECH. DES. APP.		SW527		Ø	

APPLICATION				REVISIONS					
QTY	MODIFIED ON	ASS'Y NO.	LTR	DESCRIPTION	DATE	E.M.N.O	DRAFT	CHKD	APPD
	TM125		Ø	ORIG RELEASE FOR PROD	3/23/72		Q		



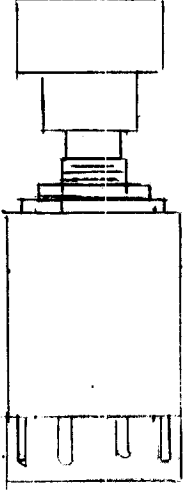
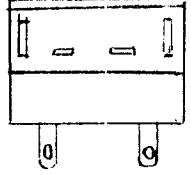
DIMENSIONS FOR REFERENCE ONLY

REF. LIND CAT. (SW623)

UNLESS OTHERWISE SPECIFIED DIMENSIONS ARE IN INCHES AND INCLUDE CHEMICALLY APPLIED OR PLATED FINISHES			REQ'D	ITEM	PART NUMBER	DESCRIPTION	SYM.
DECIMALS	X ± .05		LIST OF MATERIAL				
FRACTIONS	XX ± .01						
TOLS.	.XXX ± .005						
ANGLES	1/64 0°-30°						
MATERIAL			FINAL APPROVAL	DATE	THE TECHNICAL MATERIEL CORP. MAMARONECK, NEW YORK  DOUBLE POLE, TRIP THROW SWITCH, SLIDING		
MECH. DES.			DATE				
ELECT. DES.			DATE				
CHECKED			DATE				
DRAWN			GE	DATE	9.5.72	SIZE	
FINISH						CODE IDENT. NO.	
						A 82679	
						DWG NO.	
						SW552	
						ISSUE	
						D	
						SCALE	
						1:1	
						SHEET	
						OF	

NOTICE TO PERSONS RECEIVING THIS DRAWING  
THE TECHNICAL MATERIEL CORPORATION claims proprietary right in the material disclosed hereon. This drawing is issued in confidence for engineering information only and may not be reproduced or used to manufacture anything shown hereon without permission from THE TECHNICAL MATERIEL CORPORATION to the user. This drawing is loaned for mutual assistance and is subject to recall at any time.

APPLICATION			REVISIONS						
QTY	MODEL USED ON	ASSY NO	LTR	DESCRIPTION	DATE	E.M.N.NO	DRAFT	CHKD	APPD
	P15			ORIG. RELEASE FOR PROD.	6-33		SM		
	DC10								
1	AX5254								
1	AX5257								

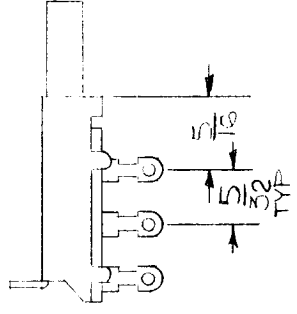
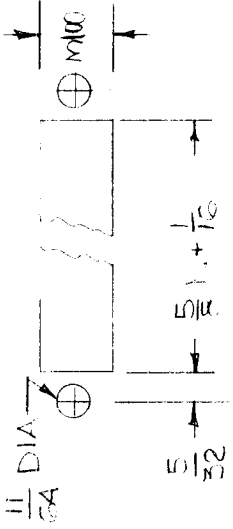


MFG. LIXON SWITCH (01140115)

REQ'D	ITEM	PART NUMBER	DESCRIPTION	SYM.
LIST OF MATERIAL				
			THE TECHNICAL MATERIEL CORP.	
			MAMARONECK, NEW YORK	
			SWITCH, PUSH BUTTON	

NOTICE TO PERSONS RECEIVING THIS DRAWING THE TECHNICAL MATERIEL CORPORATION claims proprietary right in the material disclosed hereon. This drawing is issued in confidence for engineering information only and may not be reproduced or used to manufacture anything shown hereon without permission from THE TECHNICAL MATERIEL CORPORATION to the user. This drawing is loaned for mutual assistance and is subject to recall at any time.		SIZE <b>A</b>	CODE IDENT. NO. <b>82679</b>	DWG NO. <b>SW 581</b>	ISSUE <b>Ø</b>
SCALE	1:1	SHEET		OF	

APPLICATION			REVISIONS						
QTY	MODEL USED ON	ASSY NO	LTR	DESCRIPTION	DATE	E.M.N.O	DRAFT	CHKD	APPD
			X2 0	ORIGINAL RELEASE FOR PRODUCTION	1-4-78 1-13-78		P/N		



**MOUNTING**

**DIMENSIONS**

**STYLE AVAILABLE**

DESIG	DESCRIPTION
P	PUSH-LOCK
I	PUSH-RELEASE
L	INTERLOCK
L	ALL LOCK
N	NON-LOCK

SWITCHES AVAILABLE BRACKET MOUNTED IN 2,4,6,8,10&12 STATION SINGLE AND ODD UNITS OBTAINED BY REMOVAL FROM BRACKET

EXAMPLE  
 SW559- P - 4  
 BASIC P/N T NO OF STATIONS  
 STYLE

SERIES 65100-206

REQ'D	ITEM	PART NUMBER	DESCRIPTION	SYM.
LIST OF MATERIAL				
<b>THE TECHNICAL MATERIEL CORP.</b> MAMARONECK, NEW YORK				
<b>SWITCH, MULTI-STATION</b>				
FINAL APPROVAL	DATE			
MECH. DES.	DATE			
ELECT. DES.	DATE			
CHECKED	DATE			
DRAWN	DATE			
MATERIAL		PH		
FINISH		5401-154		

NOTICE TO PERSONS RECEIVING THIS DRAWING  
 THE TECHNICAL MATERIEL CORPORATION claims proprietary right in the material disclosed hereon. This drawing is issued in confidence for engineering information only and may not be reproduced or used to manufacture anything shown hereon without permission from THE TECHNICAL MATERIEL CORPORATION to the user. This drawing is loaned for mutual assistance and is subject to recall at any time.

SIZE	CODE IDENT. NO.	DWG NO.	ISSUE
A	82679	SW 559	
SCALE	FULL	SHEET	OF

APPLICATION			REVISIONS						
QTY	MODEL USED ON	ASS'Y NO.	LTR	DESCRIPTION	DATE	E.M.N.NO	DRAFT	CHKD	APPD
1	BCT 10KA			EXPERIMENTAL RELEASE	8/11/67	X	C.V.		
				RELEASE FOR PROD.	8/11/67				

JOHN RADDIN  
201 614-6990

NOT FOR PRODUCTION  
Engineering Approval Required For Release

TMC P/N	MFGR.	MFGR PART NUMBER
SW 446	S401-	CDB-AB-FA-100-480-3

SW 448

Spc

ELECTRICAL SPECIFICATIONS

- 100 AMP
- 3 POLE
- 480 VAC
- 400 Hz
- CURVE: 3

CDB-CE-AB-100-480-3

THIS DRAWING HAS NOT BEEN USED ON ANY EQUIPMENT. RM

VENDOR MUST SUPPLY FOLLOWING INFORMATION WITH THIS ITEM:

INFORMATION TO CONTAIN SUFFICIENT DATA TO IDENTIFY THE PART AND ESTABLISH ITS ELECTRICAL AND MECHANICAL CHARACTERISTICS AS DESCRIBED IN HIS PUBLISHED CATALOGS FOR QUALITY ASSURANCE DIMENSION TOLERANCES WILL BE AS DESCRIBED IN MANUFACTURES LITERATURE.

UNLESS OTHERWISE SPECIFIED DIMENSIONS ARE IN INCHES AND INCLUDE CHEMICALLY APPLIED OR PLATED FINISHES.

DECIMALS: X ± .05, XX ± .01, XXX ± .005  
FRACTIONS: 1/64  
TOLS: ANGLES: 0°-30°

REQ'D	ITEM	PART NUMBER	DESCRIPTION	SYM.
	F. BUDETTI		LIST OF MATERIAL	
	FINAL APPROVAL	DATE 8-16-67	THE TECHNICAL MATERIEL CORP. MAMARONECK, NEW YORK	BREAKER, CIRCUIT
	MECH. DES. RT	DATE 8-11-67		
	ELECT. DES. RT	DATE 8-11-67		
	CHECKED C.V.	DATE 8/11/67		
	DRAWN JAD	DATE 8/10/67		

NOTICE TO PERSONS RECEIVING THIS DRAWING THE TECHNICAL MATERIEL CORPORATION claims proprietary right in the material disclosed hereon. This drawing is issued in confidence for engineering information only and may not be reproduced or used in manufacture anything shown hereon without permission from THE TECHNICAL MATERIEL CORPORATION to the user. This drawing is loaned for mutual assistance and is subject to recall at any time.

SIZE A	CODE IDENT. NO. 82679	DWG NO. SW 573	ISSUE
SCALE	SHEET OF		

MIL DA

APPLICATION			REVISIONS						
QTY	MODEL USED ON	ASS'Y NO.	LTR	DESCRIPTION	DATE	E.M.N.NO.	DRAFT	CHKD	APPD
1	BCT-10KA		X	EXPERIMENTAL RELEASE	4/22/67			C.V.	
			Ø	ORIG. RELEASE FOR PROD.	4.15.68			R.G.	

230

100

243-1

TMC P/N: SW  
 MFGR P/N:  
 MFGR (TMC CODE #): S401-88

SW  
 {4627}

ITE

**SPECIFICATIONS**

POLES: 3  
 VOLTS: 208 AC  
 AMPS: 150  
 FRAME: EQ-225  
 FREQUENCY- 400Hz

212 768-1400

This drawing has not been used on any equipment! SW

**PURCHASING NOTE:** VENDOR MUST INCLUDE THE FOLLOWING INFORMATION WHEN SHIPPING THIS ITEM TO TMC.

1. AN OUTLINE DRAWING OR ILLUSTRATION FROM CATALOG SHOWING ALL PERTINENT DIMENSIONS AND TOLERANCES.
2. ELECTRICAL AND/OR MECHANICAL SPECIFICATIONS AS SHOWN IN THEIR CATALOGS.

UNLESS OTHERWISE SPECIFIED DIMENSIONS ARE IN INCHES AND INCLUDE CHEMICALLY APPLIED OR PLATED FINISHES		REQ'D	ITEM	PART NUMBER	DESCRIPTION	SYM.
DECIMALS .X ± .05 .XX ± .01 .XXX ± .005	FRACTIONS 1/64 ANGLES 0° 30'	F. BUDETTI LIST OF MATERIAL				
MATERIAL	FINAL APPROVAL [Signature]	DATE 4/15/68	THE TECHNICAL MATERIEL CORP. MAMARONECK, NEW YORK			
FINISH	MECH. DES. T.J.	DATE 4/15/68	CIRCUIT, BREAKER			
	ELECT. DES. [Signature]	DATE 4/15/68				
	CHECKED [Signature]	DATE 4/15/68				
	DRAWN CV	DATE 11-28-67				

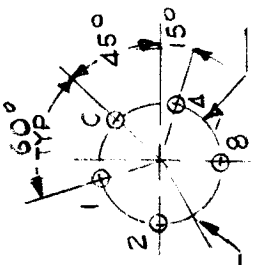
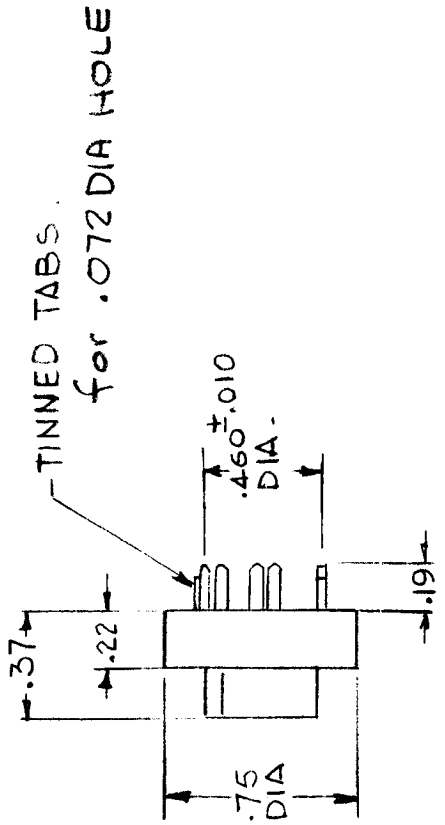
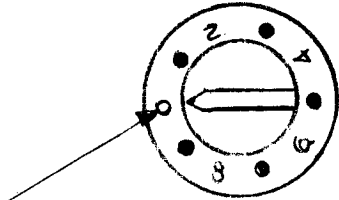
**NOTICE TO PERSONS RECEIVING THIS DRAWING**  
 THE TECHNICAL MATERIEL CORPORATION claims proprietary right in the material disclosed hereon. This drawing is issued in confidence for engineering information only and may not be reproduced or used to manufacture anything shown hereon without permission from THE TECHNICAL MATERIEL CORPORATION to the user. This drawing is loaned for mutual assistance and is subject to recall at any time.

SIZE A	CODE IDENT. NO. 82679	DWG NO. SW 574	ISSUE
SCALE	SHEET		OF



APPLICATION			REVISIONS						
QTY	MODEL USED ON	ASSY NO.	LTR	DESCRIPTION	DATE	E.M.N.NO	DRAFT	CHKD	APPD
7	AX5255			ORIG. RELEASE FOR PROD.	1-4-83		GDL		

.10 HIGH LEGEND



INDEXING CURSOR FOR THUMB WHEEL SWITCH

TYPICAL BOARD HOLE PATTERN (SWITCH SIDE)

X = CLOSED CIRCUIT  
- = OPEN CIRCUIT

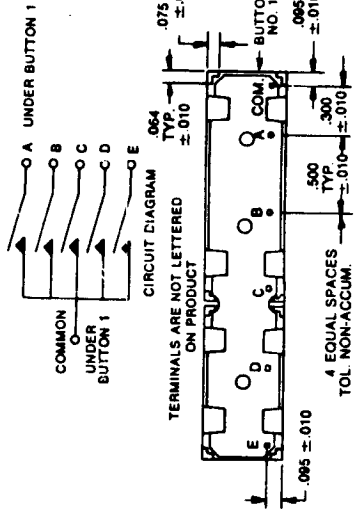
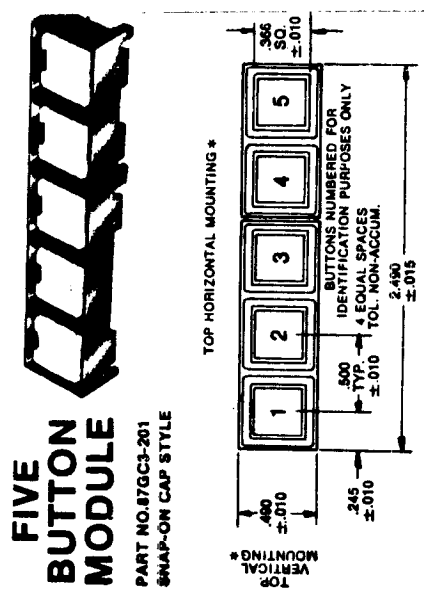
CIRCUIT		SWITCH POSITION									
INPUT	OUTPUT	0	1	2	3	4	5	6	7	8	9
C	1	-	X	-	X	-	X	-	X	-	X
	2	-	-	X	X	-	-	X	X	-	-
	4	-	-	-	-	X	X	X	X	-	-
	8	-	-	-	-	-	-	-	-	X	X

REQ'D	ITEM	PART NUMBER	DESCRIPTION	SYM.																																			
UNLESS OTHERWISE SPECIFIED DIMENSIONS ARE IN INCHES AND INCLUDE CHEMICALLY APPLIED OR PLATED FINISHES																																							
<table border="0"> <tr> <td>DECIMALS</td> <td>1/64</td> <td colspan="3"></td> </tr> <tr> <td>X ± .05</td> <td>TOLS.</td> <td colspan="3"></td> </tr> <tr> <td>.XX ± .01</td> <td>ANGLES</td> <td colspan="3"></td> </tr> <tr> <td>.XXX ± .005</td> <td>0°-90°</td> <td colspan="3"></td> </tr> </table>					DECIMALS	1/64				X ± .05	TOLS.				.XX ± .01	ANGLES				.XXX ± .005	0°-90°																		
DECIMALS	1/64																																						
X ± .05	TOLS.																																						
.XX ± .01	ANGLES																																						
.XXX ± .005	0°-90°																																						
MATERIAL																																							
FINISH																																							
<table border="0"> <tr> <td>DATE</td> <td>6-28-82</td> <td colspan="3"></td> </tr> <tr> <td>DATE</td> <td></td> <td colspan="3"></td> </tr> <tr> <td>DATE</td> <td></td> <td colspan="3"></td> </tr> <tr> <td>DATE</td> <td></td> <td colspan="3"></td> </tr> <tr> <td>DATE</td> <td></td> <td colspan="3"></td> </tr> </table>					DATE	6-28-82				DATE					DATE					DATE					DATE														
DATE	6-28-82																																						
DATE																																							
DATE																																							
DATE																																							
DATE																																							
<table border="0"> <tr> <td>FINAL APPROVAL</td> <td>DATE</td> <td colspan="3"></td> </tr> <tr> <td><i>[Signature]</i></td> <td>2-2-83</td> <td colspan="3"></td> </tr> <tr> <td>MECH. DES.</td> <td>DATE</td> <td colspan="3"></td> </tr> <tr> <td><i>[Signature]</i></td> <td>7-5-83</td> <td colspan="3"></td> </tr> <tr> <td>ELECT. DES.</td> <td>DATE</td> <td colspan="3"></td> </tr> <tr> <td>CHECKED</td> <td>DATE</td> <td colspan="3"></td> </tr> <tr> <td>DRAWN</td> <td>G.D.L</td> <td colspan="3"></td> </tr> </table>					FINAL APPROVAL	DATE				<i>[Signature]</i>	2-2-83				MECH. DES.	DATE				<i>[Signature]</i>	7-5-83				ELECT. DES.	DATE				CHECKED	DATE				DRAWN	G.D.L			
FINAL APPROVAL	DATE																																						
<i>[Signature]</i>	2-2-83																																						
MECH. DES.	DATE																																						
<i>[Signature]</i>	7-5-83																																						
ELECT. DES.	DATE																																						
CHECKED	DATE																																						
DRAWN	G.D.L																																						
<table border="0"> <tr> <td>ENG. S. DEMARCO</td> <td>LIST OF MATERIAL</td> <td colspan="3"></td> </tr> <tr> <td colspan="5">THE TECHNICAL MATERIEL CORP.</td> </tr> <tr> <td colspan="5">MAMARONECK, NEW YORK</td> </tr> </table>					ENG. S. DEMARCO	LIST OF MATERIAL				THE TECHNICAL MATERIEL CORP.					MAMARONECK, NEW YORK																								
ENG. S. DEMARCO	LIST OF MATERIAL																																						
THE TECHNICAL MATERIEL CORP.																																							
MAMARONECK, NEW YORK																																							
10 POSITION ROTARY SW. (WITH BINARY CODED DECIM. OUTPUT)																																							
SIZE	CODE IDENT. NO.	DWG NO.	ISSUE																																				
A	82679	SW 584																																					
SCALE	1:1	SHEET	OF																																				

NOTICE TO PERSONS RECEIVING THIS DRAWING  
THE TECHNICAL MATERIEL CORPORATION claims proprietary right in the material disclosed hereon. This drawing is issued in confidence for engineering information only and may not be reproduced or used to manufacture anything shown hereon without permission from THE TECHNICAL MATERIEL CORPORATION to the user. This drawing is loaned for mutual assistance and is subject to recall at any time.

APPLICATION		REVISIONS							
QTY	MODEL USED ON	ASSY NO.	LTR	DESCRIPTION	DATE	E.M.N.O	DRAFT	CHKD	APPD

4 MMX-4A *H5866*



REF: 401-239

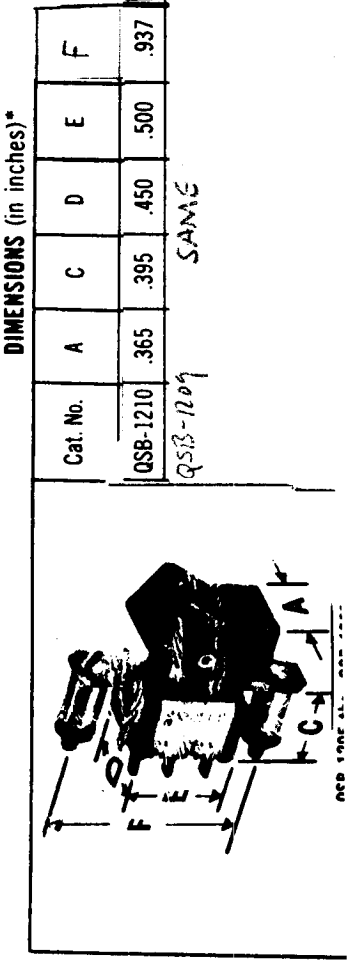
UNLESS OTHERWISE SPECIFIED DIMENSIONS ARE IN INCHES AND INCLUDE CHEMICALLY APPLIED OR PLATED FINISHES		REQ'D	ITEM	PART NUMBER	DESCRIPTION	SYM.
LIST OF MATERIAL						
MATERIAL		THE TECHNICAL MATERIEL CORP. MAMARONECK, NEW YORK				
FINISH		MODULE SW.				
FINAL APPROVAL		DATE		CODE IDENT. NO.		
MECH. DES.		DATE		A 82679		
ELECT. DES.		DATE		DWG NO.		
CHECKED		DATE		5W585		
DRAWN		DATE		ISSUE		
SCALE				SHEET		OF

NOTICE TO PERSONS RECEIVING THIS DRAWING  
 THE TECHNICAL MATERIEL CORPORATION claims proprietary right in the material disclosed hereon. This drawing is issued in confidence for engineering information only and may not be reproduced or used to manufacture anything shown hereon without permission from THE TECHNICAL MATERIEL CORPORATION to the user. This drawing is loaned for mutual assistance and is subject to recall at any time.

APPLICATION			REVISIONS						
QTY	MODEL USED ON	ASSY NO.	LTR	DESCRIPTION	DATE	E.M.N.NO	DRAFT	CHKD	APPD

12X-4A A5336

TMC P/N	MFG. P/N	DESCRIPTION	QTY
SW 586-1	QSB-1209	On-Off-On 5A 10 1,000 1,000 Silver 1,000 Silver Plated Brass Solder	1
SW 586-2	QSB-1210	On-None-On 5A 10 1,000 1,000 Silver 1,000 Silver Plated Brass Solder	3



REF-401-49

UNLESS OTHERWISE SPECIFIED DIMENSIONS ARE IN INCHES AND INCLUDE CHEMICALLY APPLIED OR PLATED FINISHES	REQ'D	ITEM	PART NUMBER	DESCRIPTION	SYM.
DECIMALS X ± .05 XX ± .01 XXX ± .005	LIST OF MATERIAL				
FRACTIONS 1/64	THE TECHNICAL MATERIEL CORP. MAMARONECK, NEW YORK				
ANGLES 0°-30°	TABLE SW.				
MATERIAL	DATE				
FINISH	MECH. DES. DATE				
	ELECT. DES. DATE				
	CHECKED DATE				
	DRAWN DATE				

NOTICE TO PERSONS RECEIVING THIS DRAWING		SIZE	CODE IDENT. NO.	DWG NO.	ISSUE
THE TECHNICAL MATERIEL CORPORATION claims proprietary right in the material disclosed hereon. This drawing is issued in confidence for engineering information only and may not be reproduced or used to manufacture anything shown hereon without permission from THE TECHNICAL MATERIEL CORPORATION to the user. This drawing is loaned for mutual assistance and is subject to recall at any time.		A	82679	SW 586	X
		SCALE	SHEET		OF