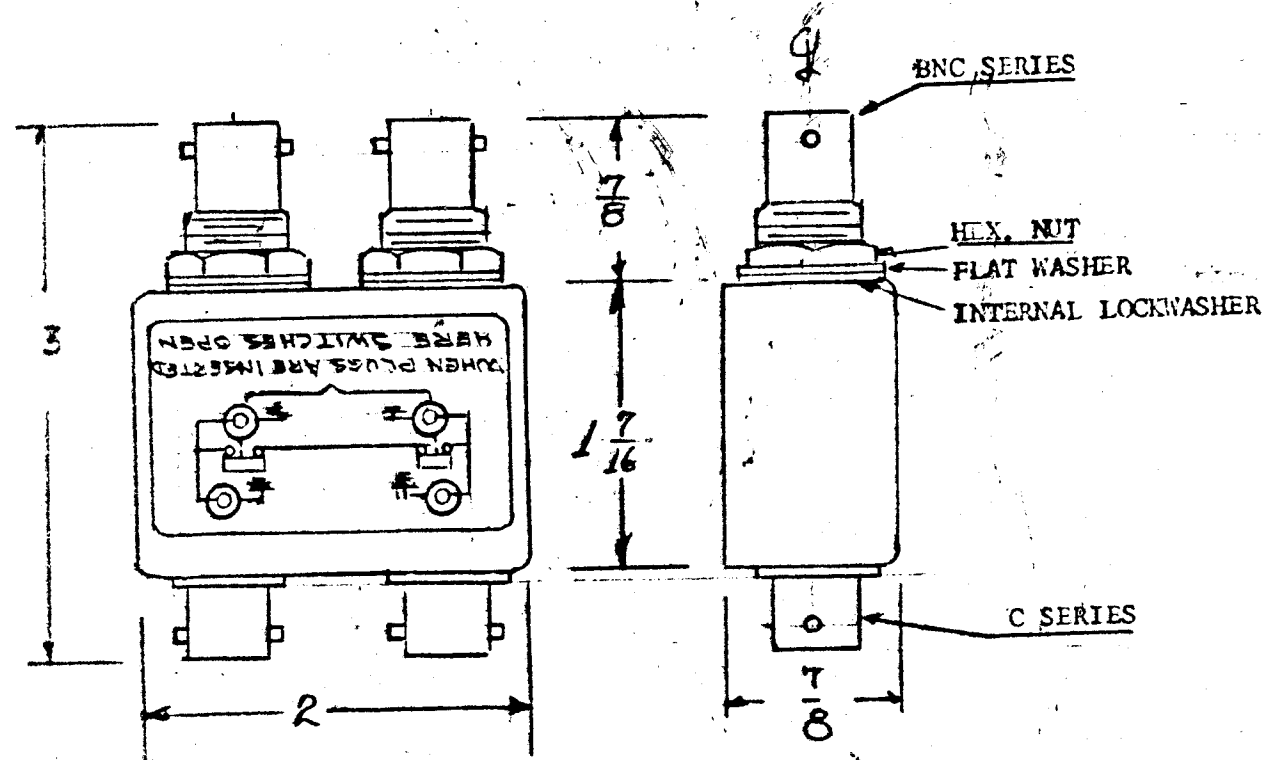


REVISIONS					DATE	APPROVED
E.M.N. NO.	DRAFT	CHKD	ZONE	LTR	DESCRIPTION	



NOTES:
CASE -
 MATERIAL: BRASS
 FINISH: TMC SMOOTH
 GREY ENAMEL
CONNECTORS -
 FINISH:
 BODIES - RHODIUM
 FLASH
 CONTACTS - GOLD
 FLASH

QTY / UNIT	MODEL USED ON	ASS'Y NO.	DECIMALS	FRACTIONS	TOLS.	ANGLES	REQ'D	ITEM	PART NUMBER	DESCRIPTION	SYM.																																
	SW587	A5859	.X ± .05	1/64		0° - 30'																																					
APPLICATION			UNLESS OTHERWISE SPECIFIED DIMENSIONS ARE IN INCHES AND INCLUDE CHEMICALLY APPLIED OR PLATED FINISHES				<table border="1"> <tr> <td>FINAL APPROVAL</td> <td>DATE</td> <td colspan="3">THE TECHNICAL MATERIEL CORP.</td> </tr> <tr> <td>MECH. DES.</td> <td>DATE</td> <td colspan="3">MAMARONECK, NEW YORK</td> </tr> <tr> <td>ELECT. DES.</td> <td>DATE</td> <td colspan="3">SWITCH JACK, ASSEMBLY</td> </tr> <tr> <td>CHECKED</td> <td>DATE</td> <td colspan="3">DUAL BNC TO DUAL C</td> </tr> <tr> <td>DRAWN</td> <td>DATE</td> <td>SIZE</td> <td>CODE IDENT. NO.</td> <td>DWG NO.</td> <td>ISSUE</td> </tr> <tr> <td></td> <td></td> <td>B</td> <td>82679</td> <td>SW587</td> <td>1</td> </tr> </table>					FINAL APPROVAL	DATE	THE TECHNICAL MATERIEL CORP.			MECH. DES.	DATE	MAMARONECK, NEW YORK			ELECT. DES.	DATE	SWITCH JACK, ASSEMBLY			CHECKED	DATE	DUAL BNC TO DUAL C			DRAWN	DATE	SIZE	CODE IDENT. NO.	DWG NO.	ISSUE			B	82679	SW587	1
FINAL APPROVAL	DATE	THE TECHNICAL MATERIEL CORP.																																									
MECH. DES.	DATE	MAMARONECK, NEW YORK																																									
ELECT. DES.	DATE	SWITCH JACK, ASSEMBLY																																									
CHECKED	DATE	DUAL BNC TO DUAL C																																									
DRAWN	DATE	SIZE	CODE IDENT. NO.	DWG NO.	ISSUE																																						
		B	82679	SW587	1																																						
CODE			MATERIAL				SCALE DONOT SCALE																																				
NOTICE TO PERSONS RECEIVING THIS DRAWING			SEE NOTE				SHEET OF																																				
THE TECHNICAL MATERIEL CORPORATION claims proprietary right in the material disclosed hereon. This drawing is issued in confidence for engineering information only and may not be reproduced or used to manufacture anything shown hereon without permission from THE TECHNICAL MATERIEL CORPORATION to the user. This drawing is loaned for mutual assistance and is subject to recall at any time.			FINISH																																								
			SEE NOTE																																								