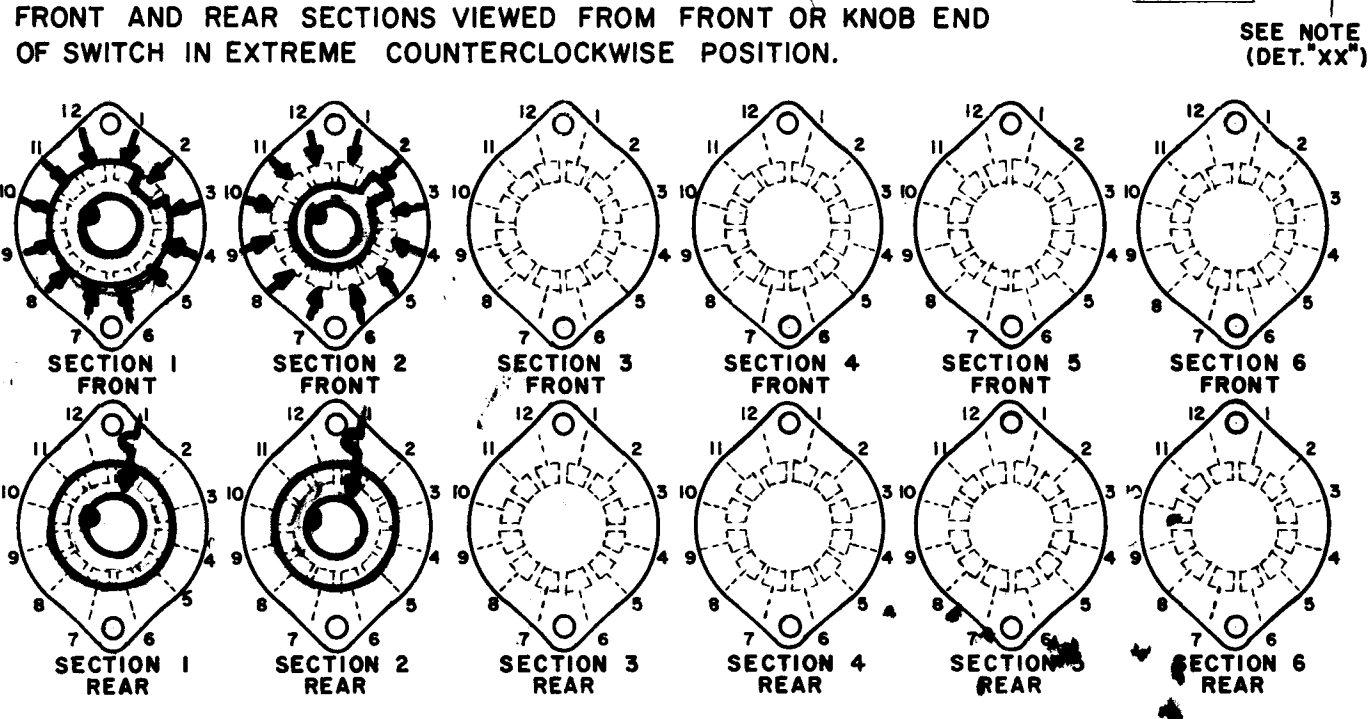
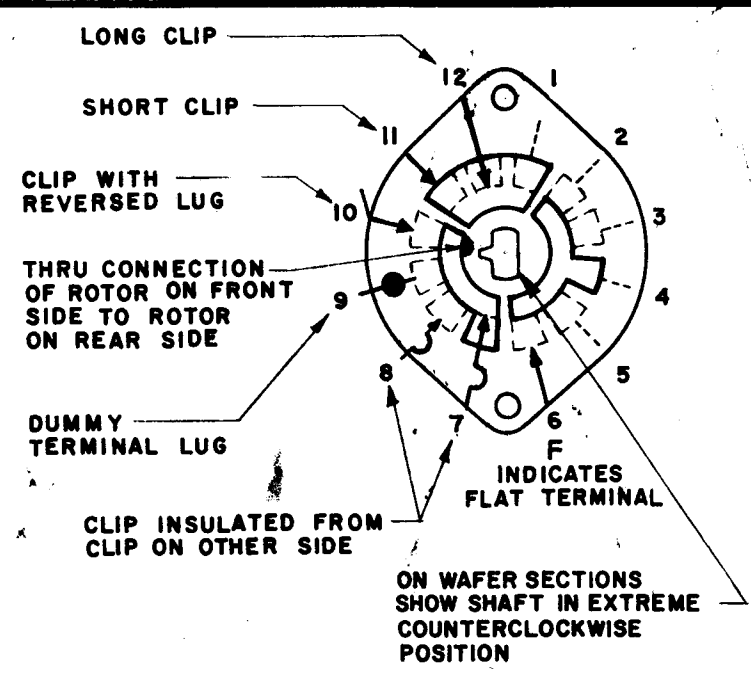
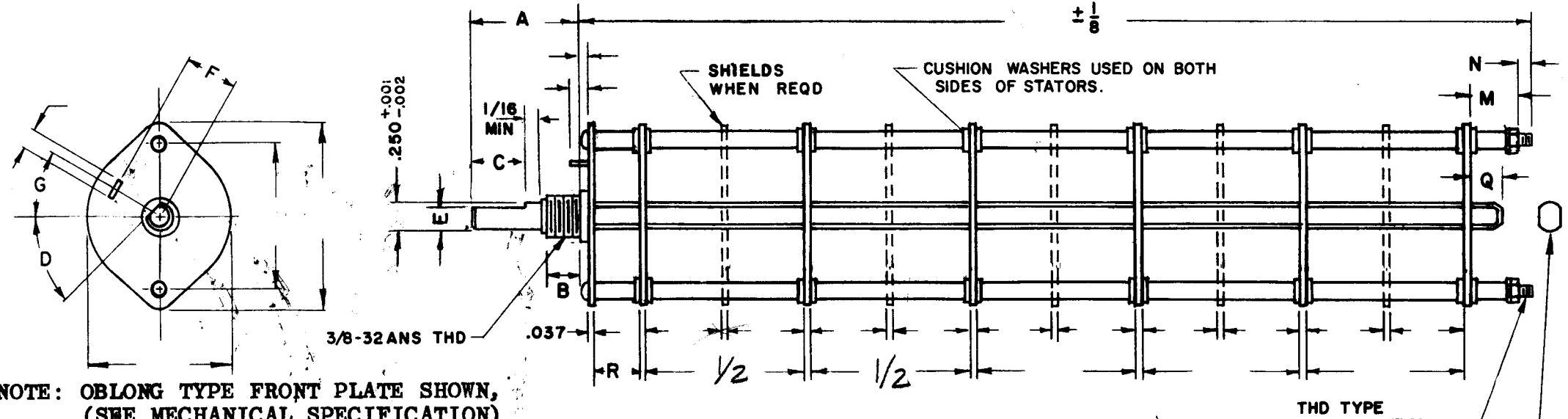
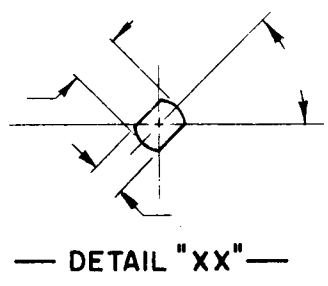


DESG.	DIMENSION	TOL.	REMARK
A	3/4	±.015	SHAFT LG. FROM MTG. SURFACE
B	3/8	±.005	BUSH. LG.
C	—	±.015	FLAT LG. (IF REQ.)
D	—	±2°	FLAT ANGLE (IF REQ.)
E	—	±.002	FLAT (IF REQUIRED)
F	—	±.010	KEY LOCATION (IF REQ.)
G	180°		KEY LOCATION (IF REQ.)
M	1/8	±.010	
N	1/8	±.093	REAR SCR. EXT.
Q	3/16	±.031	REAR SHAFT EXT.
R	1/4		1st SEC. SPACING

REVISIONS						
ZONE	LTR	DESCRIPTION	DATE	E.M.N.NO	DRAFT	CHKD APPD
	A	REVISED, REDRAWN ON 2 SIZE	5-15	21885	<i>[Signature]</i>	

TMC PART NUMBER: SW- \_\_\_\_\_ STAMP ON FRONT PLATE  
FRONT PLATE SHAPE: ROUND OR OBLONG  
MECHANICAL SPECIFICATIONS:  
NUMBER OF SECTIONS- 2  
NUMBER OF POSITIONS- CONTINUOUS 360°  
ANGLE OF THROW- 30°  
CONTACTS:  
SHORTING TYPE, SECTIONS \_\_\_\_\_  
NON SHORTING TYPE, SECTIONS ALL  
SILVER PLATED BRASS, SECTIONS ALL  
SILVER ALLOY, SECTIONS \_\_\_\_\_  
WAFERS:  
BAKELITE, SECTIONS ALL  
CERAMIC, SECTIONS \_\_\_\_\_  
MYCALEX, SECTIONS \_\_\_\_\_  
IMPREGNATION (IF REQ.) \_\_\_\_\_  
FINISH REQUIREMENTS:  
ARMY NAVY COMMERCIAL   
SALT TEST (IF REQ.) \_\_\_\_\_  
HARDWARE, TO BE SUPPLIED BY MANUFACTURER:  
1 QUAN. 3/8 -32 NUTS 1/2 ACROSS FLATS  
MATERIAL BRASS PLATING CADMIUM  
1 QUAN. 3/8 INTERNAL TOOTH LOCKWASHER  
MATERIAL BRASS PLATING CADMIUM  
ELECTRICAL SPECIFICATIONS:  
MAXIMUM RATED VOLTAGE \_\_\_\_\_  
MAXIMUM RATED CURRENT \_\_\_\_\_

NOTE:  
FOR S401-13 ("F" TYPE) SWITCHES, THE SHAFT POSITION MUST BE SPECIFIED ON DETAIL "XX" BELOW.



SYMBOLS USED IN MARKING PRINT

1	MFT-10K	AS166-1
QTY / UNIT	MODEL USED ON	ASS'Y NO.
APPLICATION		
CODE		

NOTICE TO PERSONS RECEIVING THIS DRAWING  
THE TECHNICAL MATERIEL CORPORATION claims proprietary right in the material disclosed hereon. This drawing is issued in confidence for engineering information only and may not be reproduced or used to manufacture anything shown hereon without permission from THE TECHNICAL MATERIEL CORPORATION to the user. This drawing is loaned for mutual assistance and is subject to recall at any time.

UNLESS OTHERWISE SPECIFIED DIMENSIONS ARE IN INCHES AND INCLUDE CHEMICALLY APPLIED OR PLATED FINISHES	FINAL APPROVAL <i>[Signature]</i>	DATE 5/25/81
DECIMALS .X ± .05 .XX ± .01 .XXX ± .005	MATERIAL	ELECT. DES. DATE
FRACTIONS 1/64 TOLS. ANGLES 0°-30'	FINISH	CHECKED DATE
		DRAWN G.D.L. DATE 5-12-81

THE TECHNICAL MATERIEL CORP. MAMARONECK, NEW YORK			
SWITCH ROTARY			
SIZE B	CODE IDENT. NO. 82679	DWG NO. SW 583	ISSUE A
SCALE	SHEET		OF

NOTES