

DESG.	DIMENSION	TOL.	REMARK
A	7/8	±.015	SHAFT LG. FROM MTG. SURFACE
B	3/8	±.005	BUSH. LG.
C		±.015	FLAT LG. (IF REQ.)
D		±2°	FLAT ANGLE (IF REQ.)
E		±.002	FLAT (IF REQUIRED)
F	17/32	±.010	KEY LOCATION (IF REQ.)
G	180°		KEY LOCATION (IF REQ.)
M	5/32	±.010	
N	1/8	±.093	REAR SCR. EXT.
Q	1/4	±.031	REAR SHAFT EXT.
R	1/4		1st SEC. SPACING

REVISIONS						
ZONE	LTR	DESCRIPTION	DATE	E.M.N.NO	DRAFT	CHKD
	Ø	ORIGINAL RELEASE	8/76			CL

TMC PART NUMBER: SW- _____ STAMP ON FRONT PLATE
 FRONT PLATE SHAPE: ROUND X OR OBLONG

MECHANICAL SPECIFICATIONS:

NUMBER OF SECTIONS- 3
 NUMBER OF POSITIONS- 8
 ANGLE OF THROW- 30°

CONTACTS:

SHORTING TYPE, SECTIONS _____
 NON SHORTING TYPE, SECTIONS ALL
 SILVER PLATED BRASS, SECTIONS 1, 2
 SILVER ALLOY, SECTIONS 3

WAFERS:

BAKELITE, SECTIONS 1, 2
 CERAMIC, SECTIONS 3
 MYCALEX, SECTIONS _____
 IMPREGNATION (IF REQ.) _____

FINISH REQUIREMENTS:

ARMY _____ NAVY _____ COMMERCIAL X
 SALT TEST (IF REQ.) _____

HARDWARE, TO BE SUPPLIED BY MANUFACTURER:

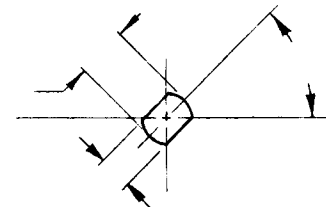
1 QUAN. 3/8 -32 NUTS _____ ACROSS FLATS
 MATERIAL _____ PLATING _____
 1 QUAN. 3/8 INTERNAL TOOTH LOCKWASHER
 MATERIAL STEEL PLATING CADMIUM

ELECTRICAL SPECIFICATIONS:

MAXIMUM RATED VOLTAGE 110VAC
 MAXIMUM RATED CURRENT 1.0 AMP BREAK
1.0 AMP CARRY

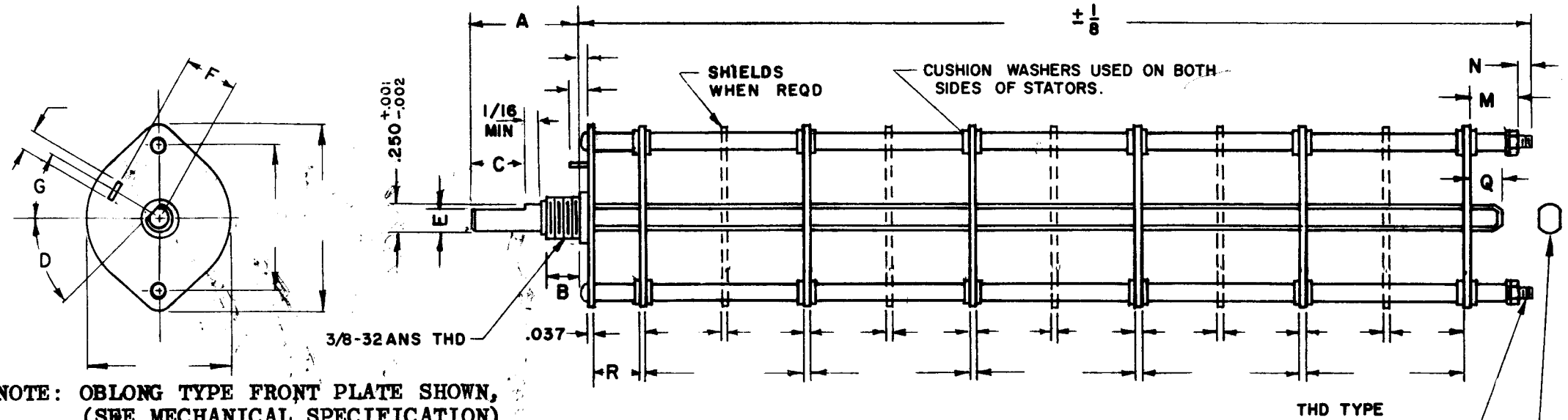
NOTE:

FOR S401-13 ("F" TYPE) SWITCHES, THE SHAFT POSITION MUST BE SPECIFIED ON DETAIL "XX" BELOW.



— DETAIL "XX" —

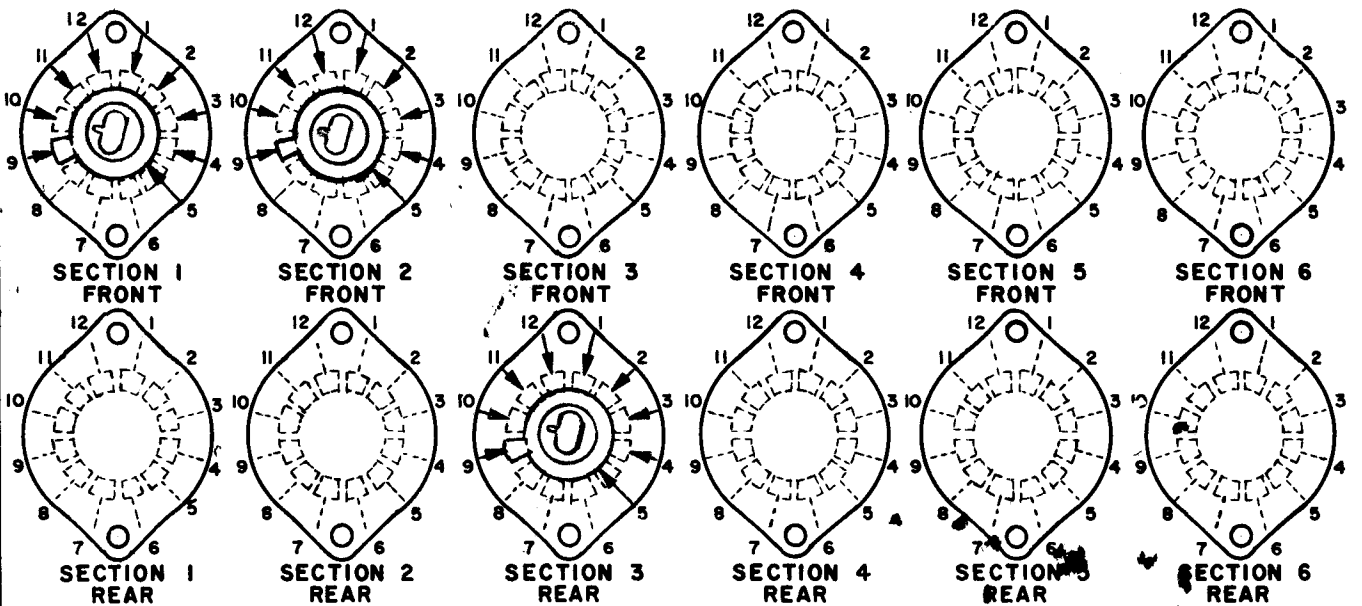
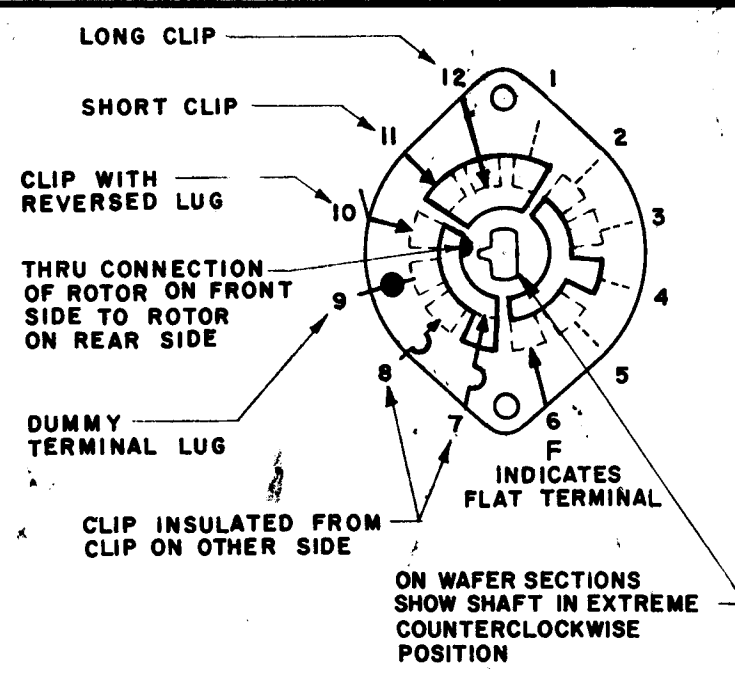
NOTES



NOTE: OBLONG TYPE FRONT PLATE SHOWN, (SEE MECHANICAL SPECIFICATION)

FRONT AND REAR SECTIONS VIEWED FROM FRONT OR KNOB END OF SWITCH IN EXTREME COUNTERCLOCKWISE POSITION.

SEE NOTE (DET. "XX")



SYMBOLS USED IN MARKING PRINT

1	TM-125	BMA 496
QTY / UNIT	MODEL USED ON	ASS'Y NO.
APPLICATION		
	CODE	

NOTICE TO PERSONS RECEIVING THIS DRAWING
 THE TECHNICAL MATERIEL CORPORATION claims proprietary right in the material disclosed hereon. This drawing is issued in confidence for engineering information only and may not be reproduced or used to manufacture anything shown hereon without permission from THE TECHNICAL MATERIEL CORPORATION to the user. This drawing is loaned for mutual assistance and is subject to recall at any time.

UNLESS OTHERWISE SPECIFIED DIMENSIONS ARE IN INCHES AND INCLUDE CHEMICALLY APPLIED OR PLATED FINISHES		FINAL APPROVAL <i>[Signature]</i>	DATE <u>8-12-76</u>
DECIMALS .X ± .05 .XX ± .01 .XXX ± .005	FRACTIONS 1/64 ANGLES 0° -30'	MECH. DES.	DATE
MATERIAL		ELECT. DES.	DATE
FINISH		CHECKED	DATE
		DRAWN <i>[Signature]</i>	DATE <u>1-2-76</u>

THE TECHNICAL MATERIEL CORP.
 MAMARONECK, NEW YORK

SWITCH, ROTARY

SIZE	CODE IDENT. NO.	DWG NO.	ISSUE
B	82679	SW 565	Ø
SCALE	SHEET		OF