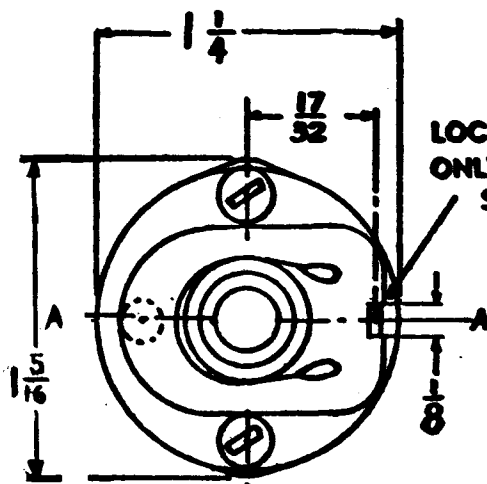
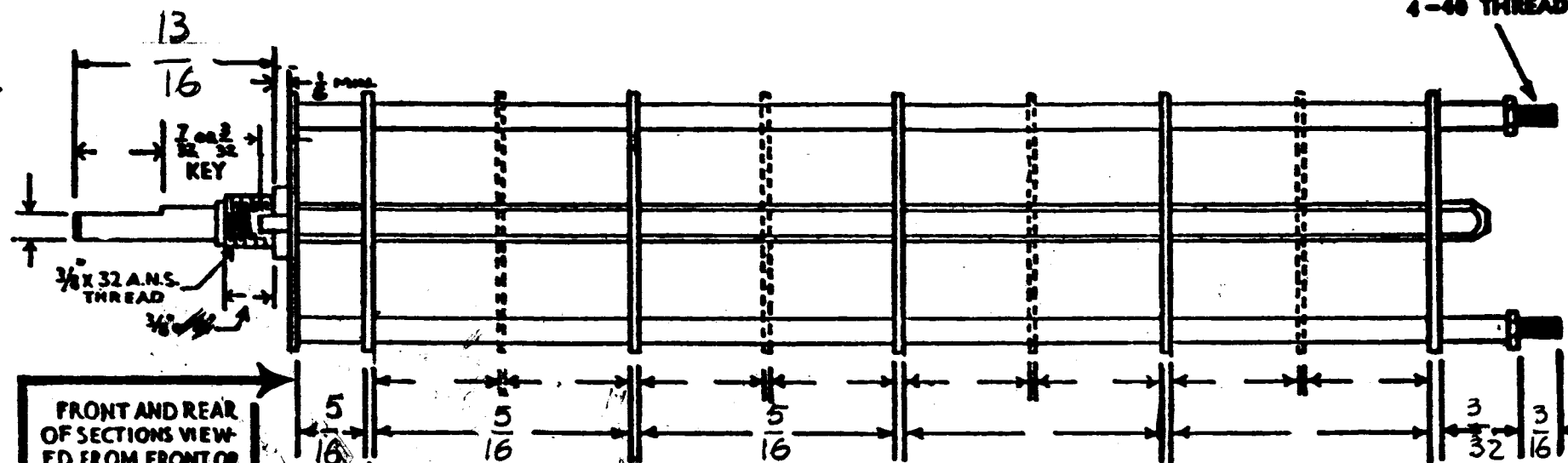


SW 562



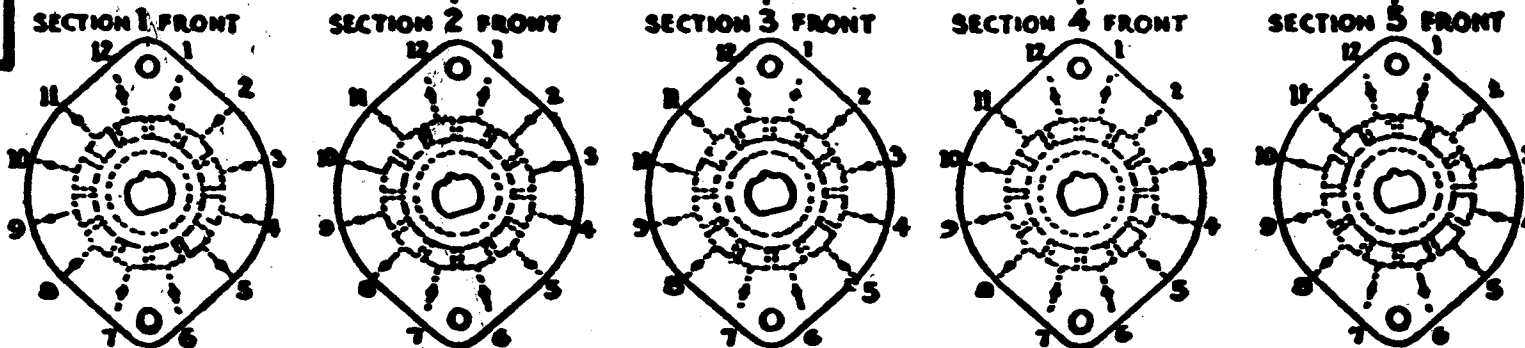
LOCATING KEY ONLY AT POINT SHOWN

SHOW CUT AWAY PORTION OF FLAT IN BLACK AND GIVE ANGLE TO LINE A-A, ± 3° STANDARD RMA KNURLED AND SLOTTED SHAFT ALSO AVAILABLE

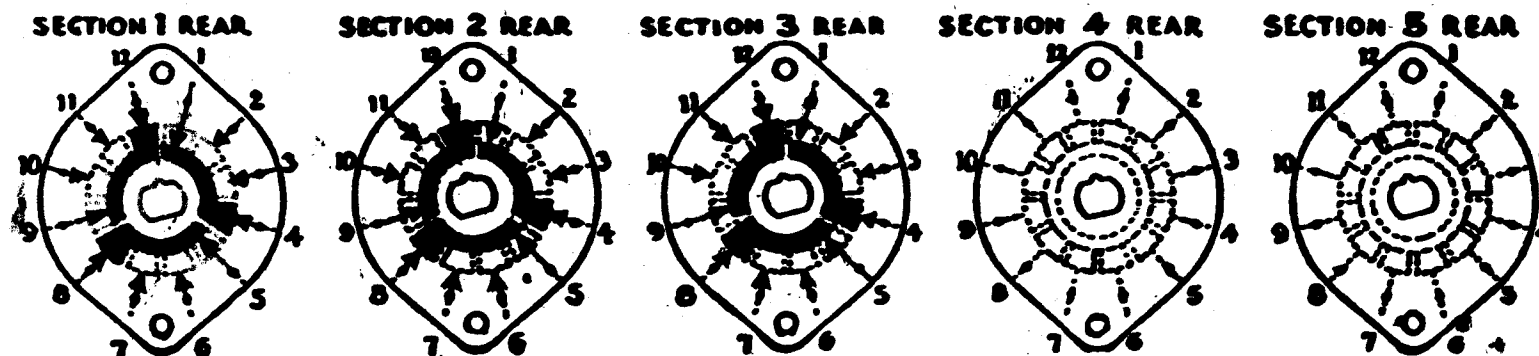
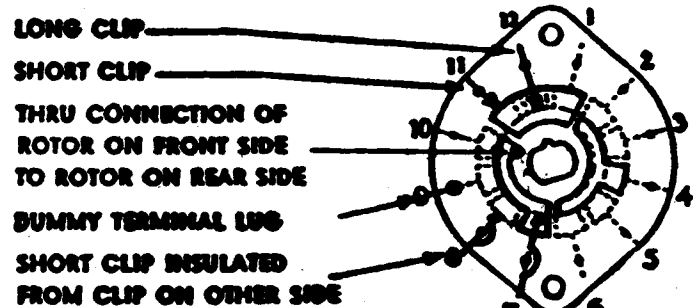


FRONT AND REAR OF SECTIONS VIEWED FROM FRONT OR KNOB END OF SWITCH IN EXTREME COUNTER-CLOCKWISE POSITION

NUMBER OF SECTIONS 3
 NUMBER OF POSITIONS 3
 ANGLE OF THROW 30° (30° CENTER)



SYMBOLS USED IN MARKING PRINT



OUTLINE ROTOR BLADES AS SHOWN ABOVE WITH SWITCH IN EXTREME COUNTER-CLOCKWISE POSITION

CUSTOMER NOTES

SPECIFICATIONS

SHORTING TYPE CONTACTS NON-SHORTING IF NOT SPECIFIED SHORTING TYPE WILL BE SUPPLIED.
 INSULATION: 1/16" BAKELITE 1/16" NY CALEX SPECIFY IMPREGNATION IF REQUIRED.
 FINISH REQUIREMENTS: COMMERCIAL ARMY NAVY SALT TEST (IF ANY GIVE DETAILS)
 CONTACTS AND ROTORS: SILVER PLATED BRASS SOLID SILVER ALLOY IF NOT SPECIFIED SILVER PLATED BRASS WILL BE SUPPLIED.
 MOUNTING HARDWARE: SUPPLY..... 3/16" - 32 NUTS..... ACROSS FLATS; MATERIAL..... PLATING.....
 STAMP PART NUMBER SW562 ON FRONT PLATE, YES NO

REQ. ITEM	PART NO.	DESCRIPTION	SYMBOL
		THE TECHNICAL MATERIEL CORP., MAMARONECK, NEW YORK	
STOCK SIZE		SWITCH ROTARY	
MATERIAL			
TYPE & TEMPER	HEAT TREAT. SPEC.	J. D. F. I.	
FINISH & SPEC. NO.		DRAWN	CHECKER
		F. I.	FINAL APPROVAL
		ELEC. DES. APP.	MECH. DES. APP.

SYM	DESCRIPTION	DATE	CH. NO.	DRAFTS	CHECKER	ENG. APP.
Ø	ORIGINAL RELEASE FOR PROD	3/13/75			CL	

UNLESS OTHERWISE SPECIFIED:
 DIMENSIONS ARE IN INCHES
 TOLERANCES ON FRACTIONS ± 1/64 DECIMALS ± .005 ANGLES ± 1/2°
 SCALE: MAXIMUM ALLOWABLE TOLERANCES HAVE BEEN DETERMINED AND ANY DEVIATIONS WILL BE CAUSE FOR REJECTION. REMOVE ALL BURRS AND SHARP EDGES

REQ. PER UNIT	MODEL	SECTION	ASS'Y. NO.	DATE
1	TMA-1K		BMA521	2-7-75