

DESG.	DIMENSION	TOL.	REMARKS
A	1-3/8		Foot mount only
B	13/16		Foot mount only
C			Flange mount only
D			Flange mount only
E	1-3/4		Max. over clips
F	3-1/8	1/32	From rear plate to shaft end
G			Total length for foot mount
H		1/32	Foot mount only
J	19/32		
K	.707	REF.	
L	1/2		Last wafer to rear plate
M	2-11/16	MAX.	Total length (to end of rear plate)
N	1-5/32		Size 3-1 5/32 Size 5-1 9/16
P	2.0	MAX.	FOOT MOUNT ONLY

Switch Specifications

Mechanical

Rotation of Solenoid (viewed from solenoid end): CW  CCW   
 No. of sections: 2  
 No. of positions: 12  
 Angle of throw: 30°  
 Type Mounting: Flange  Foot   
 Solenoid Connections: Solder lug  Wire

Contacts:

NOTCH HOMING, Sections 1  
 Non-shorting, Sections 2  
 Silver plated Brass  
 Silver alloy

Wafer material: Phenolic  Other BAKELITE  
 Finish: Comm.  50hr.  OR 200hr.  salt spray  
 Opr. temp.: 0°C TO +50°C  
 Wafer Type: F OR EQUIV.  
 Electrical Specs.

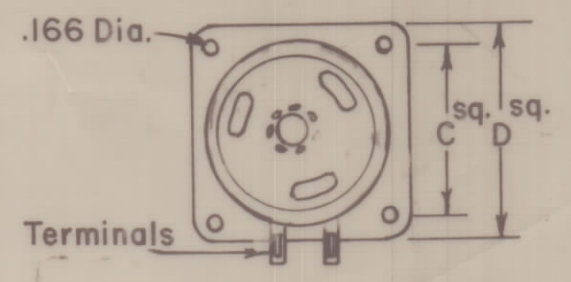
Current rating: Carry 5 amps resistive max.  
 Break @ 24 volts: 2 amp resistive max.  
 Break @ 115volts: 1 amp resistive max.  
 Dielectric Strength: 1000v clip to clip, 500v insulated clips back to back.

Coil Specifications

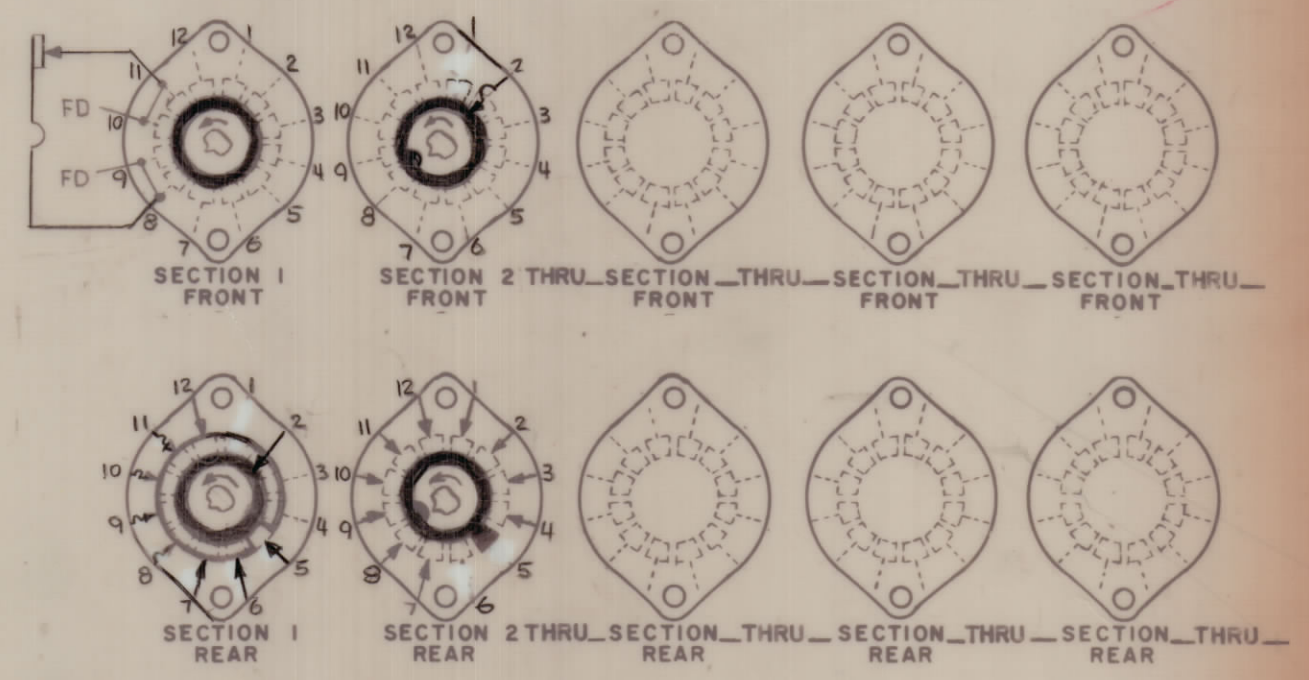
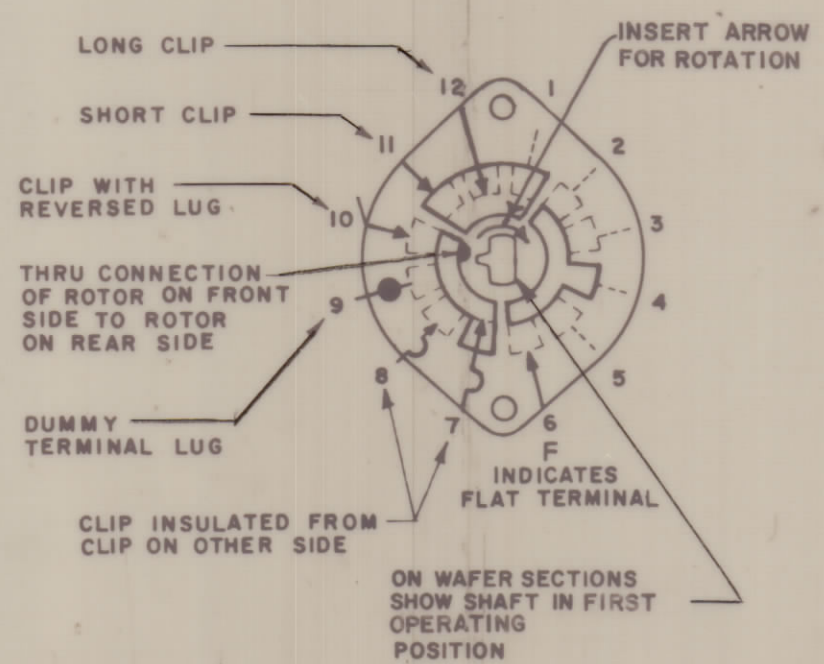
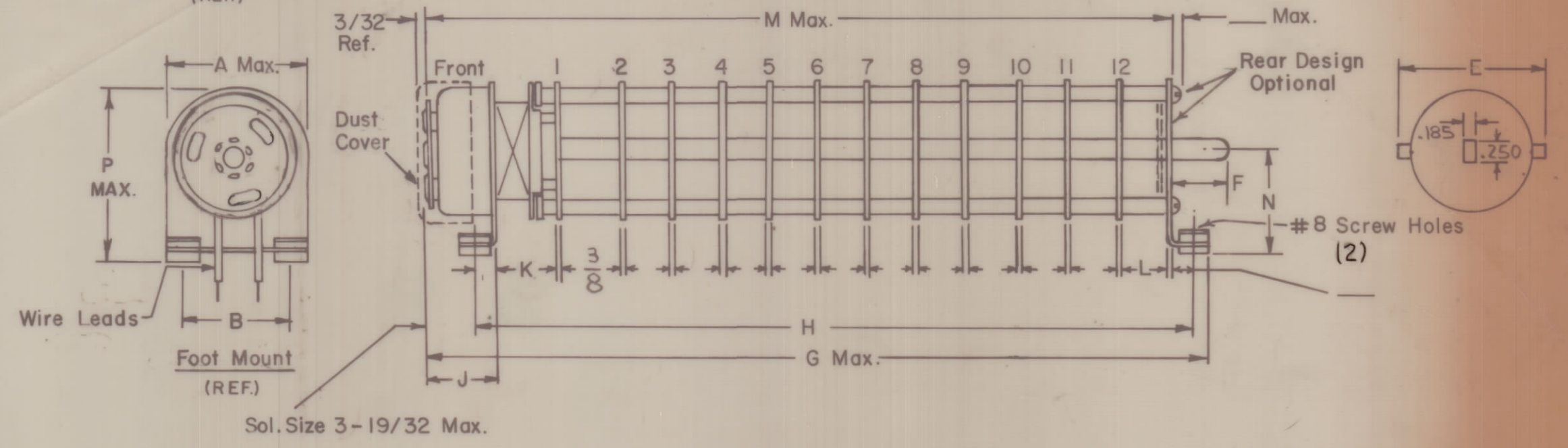
Solenoid Size: 3B  
 Coil Resistance @ 20° C.: 7.4Ω ± 10%  
 Voltage: 24V - 30VDC  
 Gross Starting Torque @ 20° C.: 2 lb. in. @ 26VDC  
 Duty Cycle: 1/10  
 Rotary Stroke Angle: 35°  
 Electric Strength: 1200 VRMS  
 Dust Cover: with  w/out

NOTES:

- View wafers from solenoid end of switch.
- Rear side of wafer viewed as if looking through wafers, from solenoid end.
- Orientation of wafer is with Pin 1 in the one o'clock or twelve o'clock position, according to rotation, as viewed from the solenoid end with solenoid connecting wires or terminals facing down.
- Rotation is in direction of arrow viewed from solenoid end.
- Wafers shown in No. 1 or first operating position.



Flange Mount (REF.)



SYMBOLS USED IN MARKING PRINT

REVISIONS							
ZONE	SYM	DESCRIPTION	DATE	E.M.N. NO.	DRAFT	CHKD	APPD
	Ø	ORIGINAL RELEASE	1/2/75		D.L.		FB
	A	CONNECTIONS CLARIFIED	1/29/75	21214	G.D.L.		FB
	B	COMPLETELY REVISED & REDRAWN	6/24/75	21257	F.I.	CL	CL
	C	ON SECT. 11 REAR & SECT 2 FRONT STYLE TERMS CHANGE	9/2/75	21641	G.D.L.	WAB	KP

NO FOOT MOUNT ON REAR

NOTES

1	HFL-100	A5605
Q'TY/UNIT	MODEL USED ON	ASS'Y. NO.
SCALE	CODE	

THE CONTENTS OF THIS DRAWING ARE THE EXCLUSIVE PROPERTY OF THE TECHNICAL MATERIEL CORP. ITS UNAUTHORIZED USE OR REPRODUCTION IN WHOLE OR IN PART IS STRICTLY FORBIDDEN.

REQ'D.	ITEM	PART NUMBER	DESCRIPTION	SYMBOL
LIST OF MATERIAL				
THE TECHNICAL MATERIEL CORP. MAMARONECK, NEW YORK				
TITLE SWITCH, ROTARY, SOLENOID 12 POSITION				
DRAWN		DATE	FINAL APPROVAL	
CHECKED		DATE	DATE	
ELECT. DES.		DATE	DATE	
MECH. DES.		DATE	DATE	
DECIMALS		FRACTIONS		
.X ± .05		± 1/64		
.XX ± .01		ANGLES		
.XXX ± .005		± 6° 30'		
TOLERANCES		DATE		
		6-25-75		
		SHEET		

SW561