

DESC.	DIMENSION	TOL.	REMARKS
A			Foot mount only
B			Foot mount only
C	1 1/4		Flange mount only
D	1 2/16		Flange mount only
E			Max. over clips
F	1/2	1/32	From rear plate to shaft end
G			Total length for foot mount
H		1/32	Foot mount only
J			
K	.707	REF.	
L	3/8		Last wafer to rear plate
M	2.0	MAX.	Total length (to end of rear plate)
N			Size 3-1 5/32 Size 5-1 9/16
P		MAX.	FOOT MOUNT ONLY

Switch Specifications

Mechanical

Rotation of Solenoid (viewed from solenoid end): CW CCW
 No. of sections: 1
 No. of positions: 12
 Angle of throw: 30°
 Type Mounting: Flange Foot
 Solenoid Connections: Solder lug Wire

Contacts:

NOTCH HOMING Sections 1
 Non-shorting Sections
 Silver plated Brass
 Silver alloy

Wafer material: Phenolic Other BAKE LITE
 Finish: Comm. 50hr. OR 200hr. salt spray
 Opr. temp.:
 Wafer:

Electrical Specs.

Current rating: Carry 5 amps resistive max.
 Break @ 24 volts: 2 amp resistive max.
 Break @ 115 volts: 1 amp resistive max.
 Dielectric Strength: 1000v clip to clip, 500v insulated clips back to back.

Coil Specifications

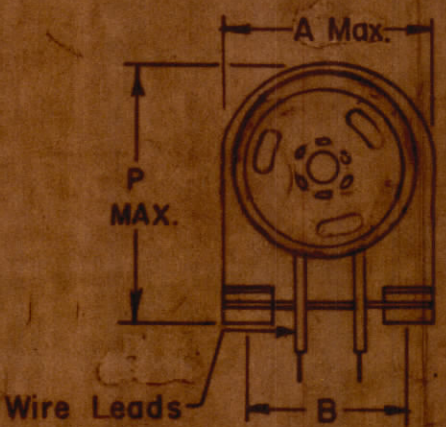
Solenoid Size: 3B
 Coil Resistance @ 20° C.: 7.4 Ω ± 10%
 Voltage: 24-30 VDC
 Gross Starting Torque @ 20° C:
 Duty Cycle: 1/10
 Rotary Stroke Angle: 35°
 Electric Strength: 1200 VRMS
 Dust Cover: with w/out

NOTES:

- View wafers from solenoid end of switch.
- Rear side of wafer viewed as if looking through wafers, from solenoid end.
- Orientation of wafer is with Pin 1 in the one o'clock or twelve o'clock position, according to rotation, as viewed from the solenoid end with solenoid connecting wires or terminals facing down.
- Rotation is in direction of arrow viewed from solenoid end.
- Wafers shown in No. 1 or first operating position.

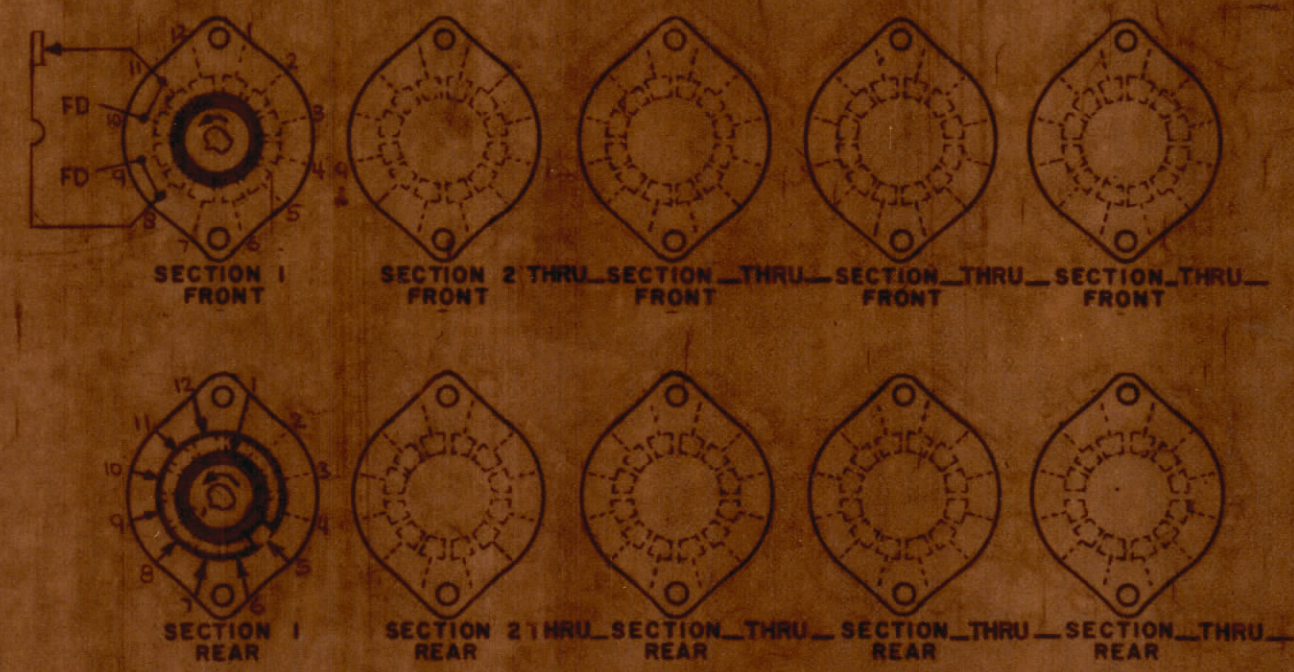
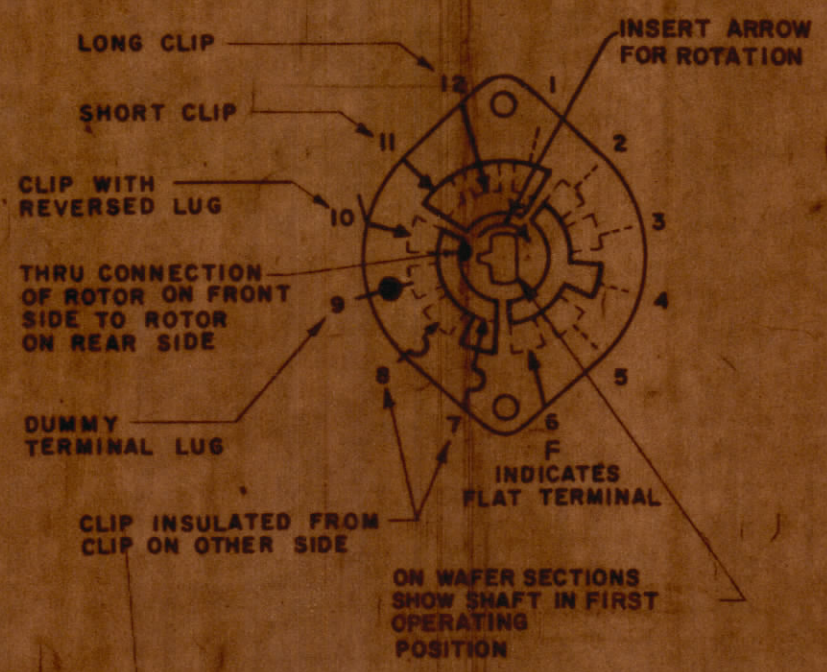
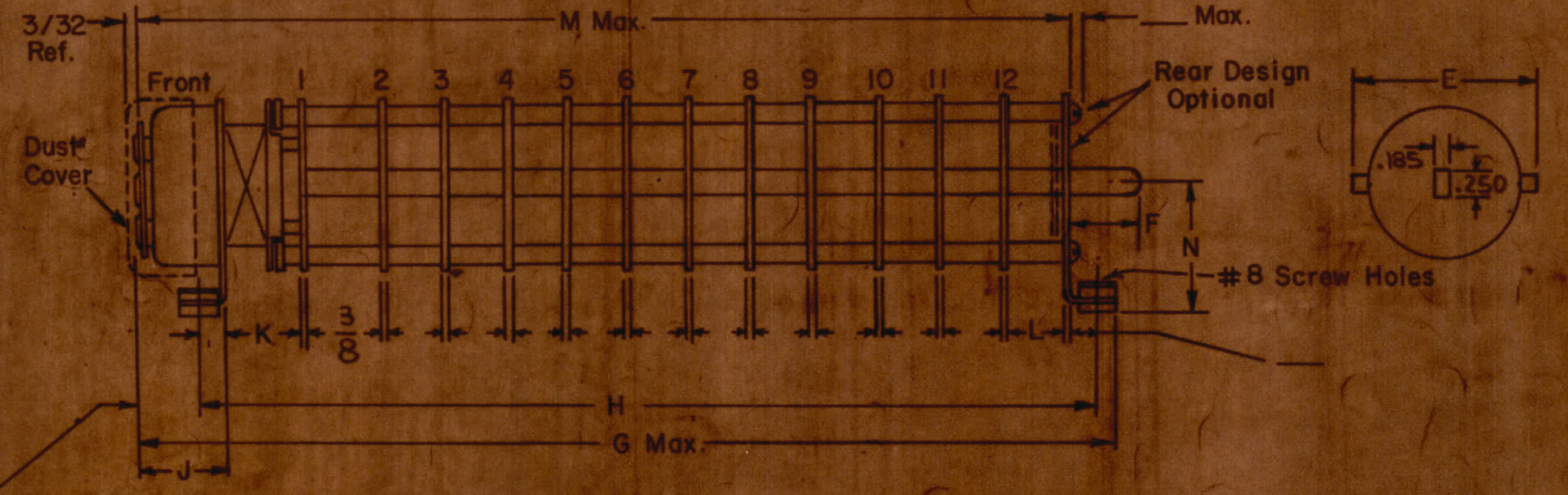


Flange Mount (REF)



Foot Mount (REF)

Sol. Size 3-19/32 Max.



SYMBOLS USED IN MARKING PRINT

NO FOOT MOUNT ON REAR

NOTES

ATU-350		
QTY/UNIT	MODEL USED ON	ASBY NO
SCALE	CODE	
THE CONTENTS OF THIS DRAWING ARE THE EXCLUSIVE PROPERTY OF THE TECHNICAL MATERIEL CORP. ITS UNAUTHORIZED USE OR REPRODUCTION IN WHOLE OR IN PART IS STRICTLY FORBIDDEN.		

REQ'D.	ITEM	PART NUMBER	DESCRIPTION	SYMBOL
LIST OF MATERIAL				
MATERIAL		THE TECHNICAL MATERIEL CORP. MAMARONECK, NEW YORK		
FINISH		TITLE SWITCH, ROTARY, SOLENOID 12 POSITION		
UNLESS OTHERWISE SPECIFIED DIMENSIONS ARE IN INCHES AND INCLUDE CHEMICALLY APPLIED OR PLATED FINISHES	DRAWN	DATE	FINAL APPROVAL	DATE
DECIMALS .X ± .08 .XX ± .01 .XXX ± .005	CHECKED	DATE	SW560	REV. 1
FRACTIONS ± 1/64 ANGLES ± 0° 30'	SELECT. DES.	DATE		
TOLERANCES		MECH. DES.	SHEET	REV. 1

MS

B

A