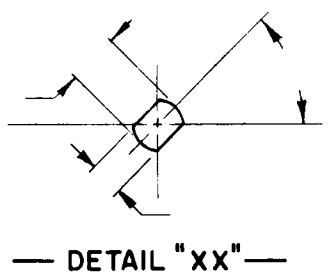


DESG.	DIMENSION	TOL.	REMARK
A	7/8	±.015	SHAFT LG. FROM MTG. SURFACE
B	3/8	±.005	BUSH. LG.
C		±.015	FLAT LG. (IF REQ.)
D		±2°	FLAT ANGLE (IF REQ.)
E		±.002	FLAT (IF REQUIRED)
F		±.010	KEY LOCATION (IF REQ.)
G			KEY LOCATION (IF REQ.)
M		±.010	
N	1/8	±.093	REAR SCR. EXT.
Q	1/8	±.031	REAR SHAFT EXT.
R	3/8		1st SEC. SPACING

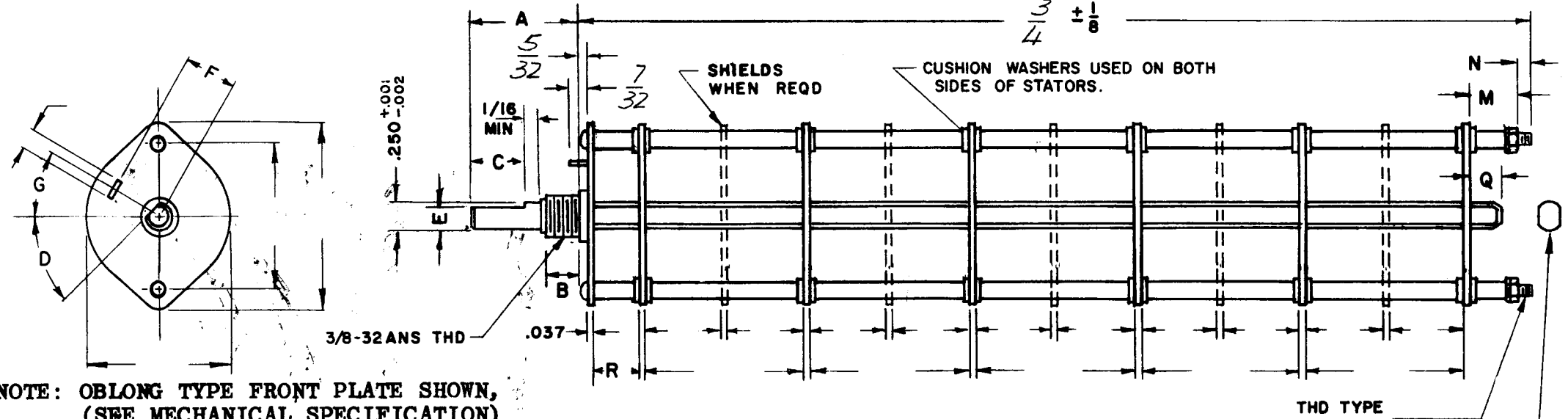
REVISIONS						
ZONE	LTR	DESCRIPTION	DATE	E.M.N.NO	DRAFT	CHKD APPD
	Ø	ORIG RELEASE FOR PROD	3/23/73		CL	

TMC PART NUMBER: SW-551 STAMP ON FRONT PLATE  
FRONT PLATE SHAPE: ROUND X OR OBLONG  
MECHANICAL SPECIFICATIONS:  
NUMBER OF SECTIONS- 1  
NUMBER OF POSITIONS- 4  
ANGLE OF THROW- 30°  
CONTACTS:  
SHORTING TYPE, SECTIONS SECTION 1 REAR  
NON SHORTING TYPE, SECTIONS SECTION 1 FNT.  
SILVER PLATED BRASS, SECTIONS  
SILVER ALLOY, SECTIONS  
WAFERS:  
BAKELITE, SECTIONS X  
CERAMIC, SECTIONS  
MYCALEX, SECTIONS  
IMPREGNATION (IF REQ.)  
FINISH REQUIREMENTS:  
ARMY NAVY COMMERCIAL X  
SALT TEST (IF REQ.)  
HARDWARE, TO BE SUPPLIED BY MANUFACTURER:  
QUAN. -32 NUTS ACROSS FLATS  
MATERIAL PLATING  
QUAN. INTERNAL TOOTH LOCKWASHER  
MATERIAL PLATING  
ELECTRICAL SPECIFICATIONS:  
MAXIMUM RATED VOLTAGE  
MAXIMUM RATED CURRENT

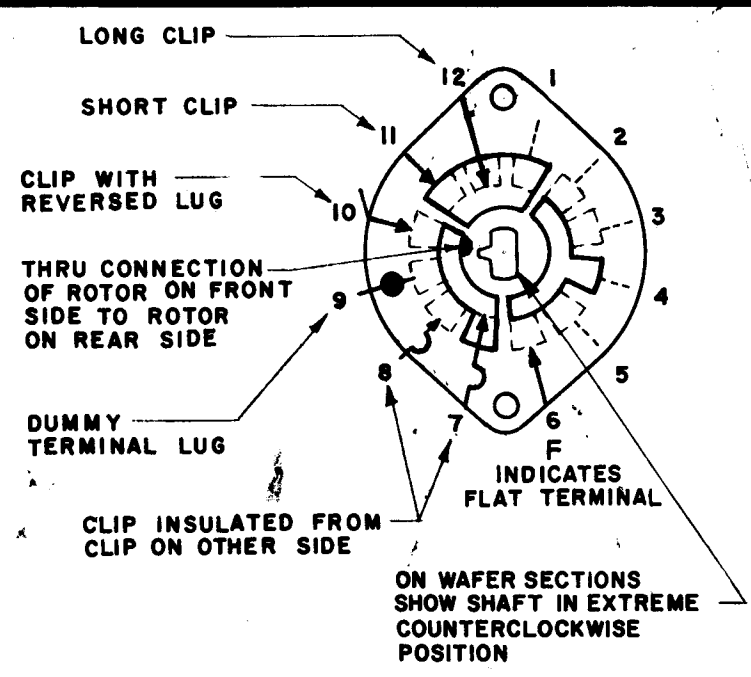
NOTE:  
FOR S401-13 ("F" TYPE) SWITCHES, THE SHAFT POSITION MUST BE SPECIFIED ON DETAIL "XX" BELOW.



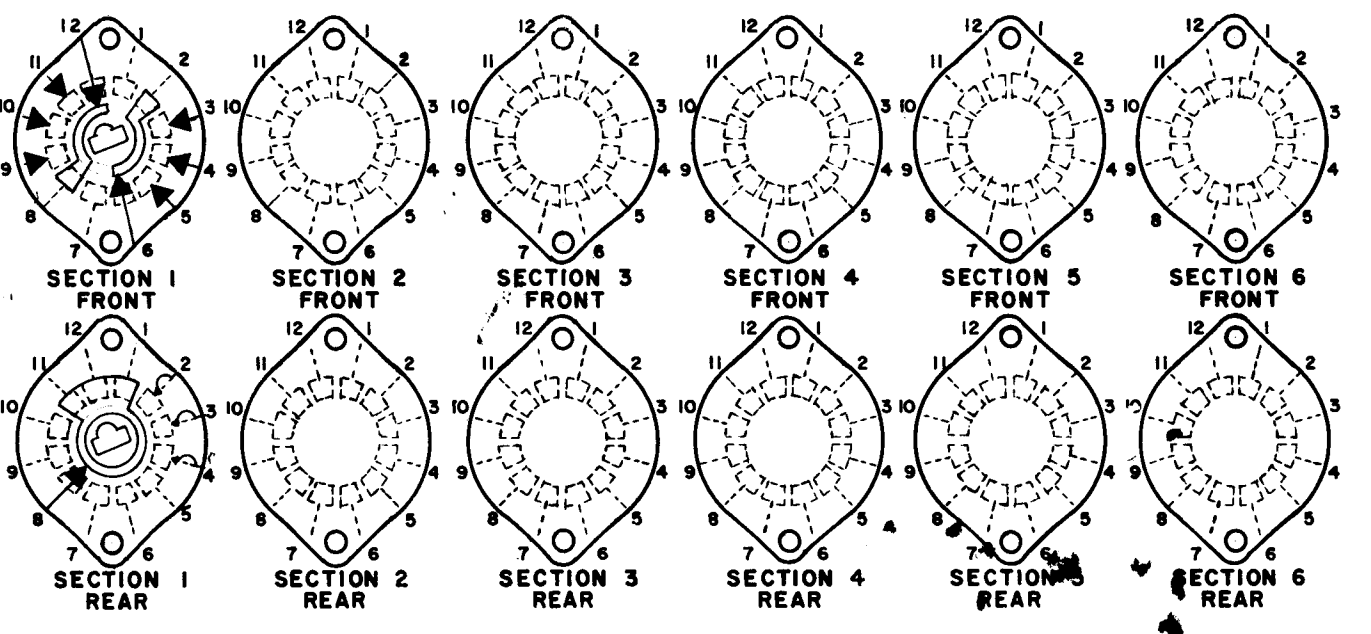
NOTES



NOTE: OBLONG TYPE FRONT PLATE SHOWN, (SEE MECHANICAL SPECIFICATION)



FRONT AND REAR SECTIONS VIEWED FROM FRONT OR KNOB END OF SWITCH IN EXTREME COUNTERCLOCKWISE POSITION. SEE NOTE (DET. "XX")



SYMBOLS USED IN MARKING PRINT

## SWITCH, ROTARY - 12 POINT TYPE

QTY / UNIT			MODEL USED ON		ASS'Y NO.	UNLESS OTHERWISE SPECIFIED DIMENSIONS ARE IN INCHES AND INCLUDE CHEMICALLY APPLIED OR PLATED FINISHES		FINAL APPROVAL	DATE	THE TECHNICAL MATERIEL CORP. MAMARONECK, NEW YORK			
TM 125						DECIMALS	FRACTIONS	MICH. DES.		POWER SWITCH			
APPLICATION			CODE			.X ± .05	1/64	ELECT. DES.		DATE			
						.XX ± .01	TOLS. ANGLES	CHECKED		DATE			
						.XXX ± .005	0° - 30'	DRAWN		DATE			
MATERIAL						FINISH		GE		3/19/72			
NOTICE TO PERSONS RECEIVING THIS DRAWING										SIZE	CODE IDENT. NO.	DWG NO.	ISSUE
THE TECHNICAL MATERIEL CORPORATION claims proprietary right in the material disclosed hereon. This drawing is issued in confidence for engineering information only and may not be reproduced or used to manufacture anything shown hereon without permission from THE TECHNICAL MATERIEL CORPORATION to the user. This drawing is loaned for mutual assistance and is subject to recall at any time.										B	82679	SW 551	Ø
										SCALE	SHEET		OF