

DESG.	DIMENSION	TOL.	REMARK
A	7/8	±.015	SHAFT LG. FROM MTG. SURFACE
B	3/8	±.005	BUSH. LG.
C		±.015	FLAT LG. (IF REQ.)
D		±2°	FLAT ANGLE (IF REQ.)
E		±.002	FLAT (IF REQUIRED)
F		±.010	KEY LOCATION (IF REQ.)
G			KEY LOCATION (IF REQ.)
M		±.010	
N	1/8	±.093	REAR SCR. EXT.
Q	1/8	±.031	REAR SHAFT EXT.
R	3/8		1st SEC. SPACING

REVISIONS						
ZONE	LTR	DESCRIPTION	DATE	E.M.N.NO	DRAFT	CHKD APPD
	Ø	ORIGINAL RELEASE	1/26/73		DV	

TMC PART NUMBER: SW-550 STAMP ON FRONT PLATE  
FRONT PLATE SHAPE: ROUND  OR OBLONG

MECHANICAL SPECIFICATIONS:  
NUMBER OF SECTIONS- 1  
NUMBER OF POSITIONS- 4  
ANGLE OF THROW- 30°

CONTACTS:  
SHORTING TYPE, SECTIONS \_\_\_\_\_  
NON SHORTING TYPE, SECTIONS ALL  
SILVER PLATED BRASS, SECTIONS X  
SILVER ALLOY, SECTIONS \_\_\_\_\_

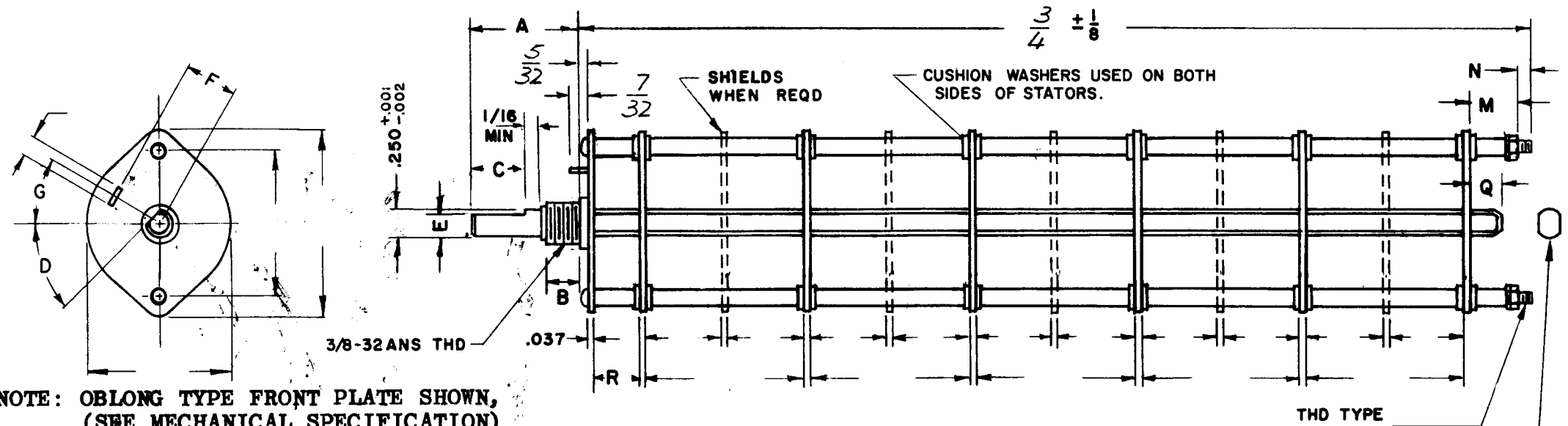
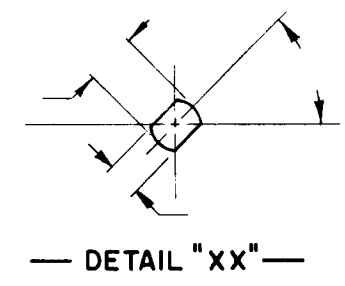
WAFERS:  
BAKELITE, SECTIONS X  
CERAMIC, SECTIONS \_\_\_\_\_  
MYCALEX, SECTIONS \_\_\_\_\_  
IMPREGNATION (IF REQ.) \_\_\_\_\_

FINISH REQUIREMENTS:  
ARMY NAVY COMMERCIAL X  
SALT TEST (IF REQ.) \_\_\_\_\_

HARDWARE, TO BE SUPPLIED BY MANUFACTURER:  
QUAN. -32 NUTS ACROSS FLATS  
MATERIAL PLATING  
QUAN. INTERNAL TOOTH LOCKWASHER  
MATERIAL PLATING

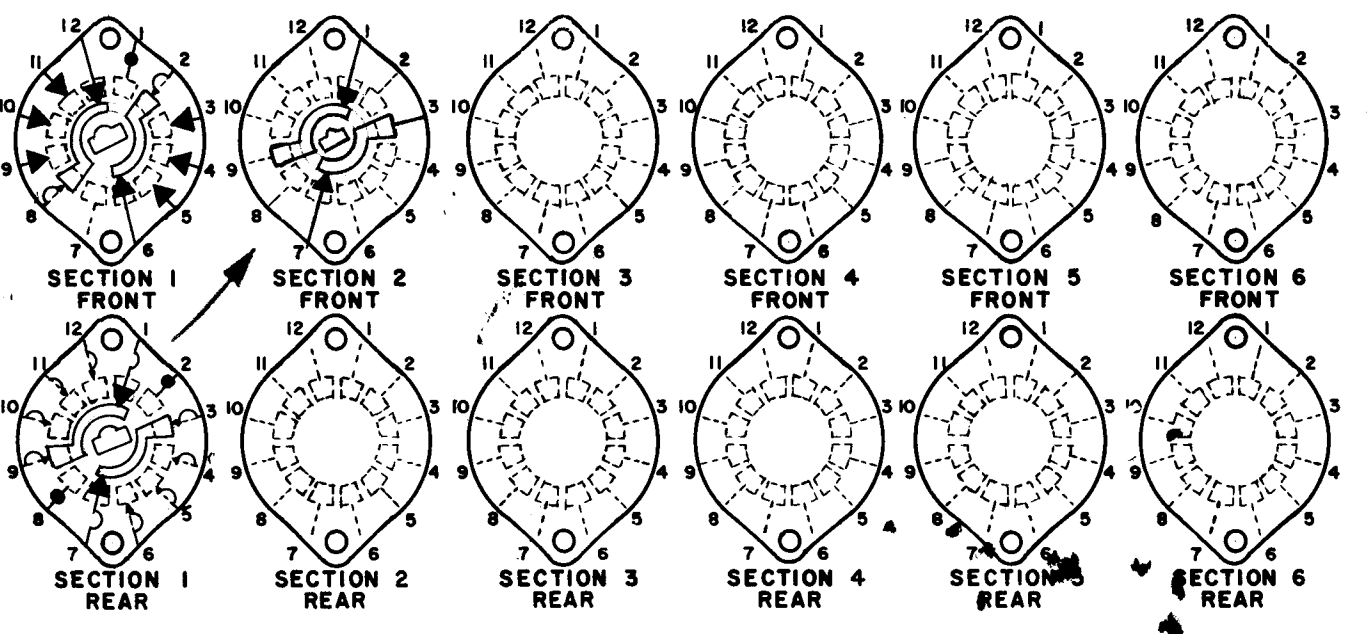
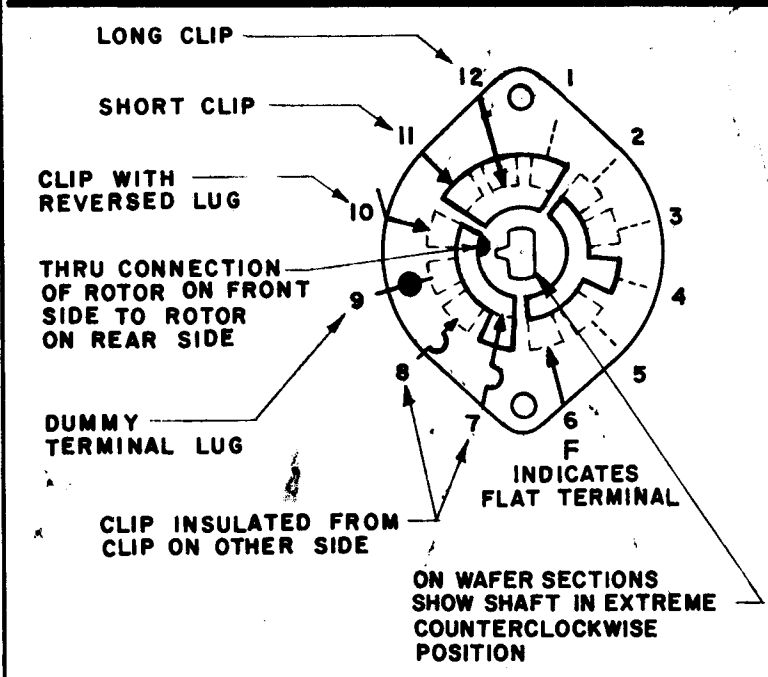
ELECTRICAL SPECIFICATIONS:  
MAXIMUM RATED VOLTAGE \_\_\_\_\_  
MAXIMUM RATED CURRENT \_\_\_\_\_

NOTE:  
FOR S401-13 ("F" TYPE) SWITCHES, THE SHAFT POSITION MUST BE SPECIFIED ON DETAIL "XX" BELOW.



NOTE: OBLONG TYPE FRONT PLATE SHOWN, (SEE MECHANICAL SPECIFICATION)

FRONT AND REAR SECTIONS VIEWED FROM FRONT OR KNOB END OF SWITCH IN EXTREME COUNTERCLOCKWISE POSITION. SEE NOTE (DET. "XX")



## SWITCH, ROTARY - 12 POINT TYPE

<p>UNLESS OTHERWISE SPECIFIED DIMENSIONS ARE IN INCHES AND INCLUDE CHEMICALLY APPLIED OR PLATED FINISHES</p>			<p>FINAL APPROVAL</p> <p>MECH. DES. <i>AK</i></p> <p>ELECT. DES.</p> <p>CHECKED</p> <p>DRAWN <i>GE</i></p> <p>FINISH</p>	<p>DATE</p> <p>DATE</p> <p>DATE</p> <p>DATE</p> <p>DATE</p> <p>DATE</p>	<p>THE TECHNICAL MATERIEL CORP.</p> <p>MAMARONECK, NEW YORK</p> <p><b>MODE SWITCH</b></p>		
<p>QTY / UNIT</p> <p>MODEL USED ON</p> <p>ASS'Y NO.</p> <p>APPLICATION</p> <p>CODE</p>	<p>DECIMALS</p> <p>.X ± .05</p> <p>.XX ± .01</p> <p>.XXX ± .005</p>	<p>FRACTIONS</p> <p>1/64</p> <p>TOLS.</p> <p>ANGLES</p> <p>0° - 30'</p>	<p>NOTICE TO PERSONS RECEIVING THIS DRAWING</p> <p>THE TECHNICAL MATERIEL CORPORATION claims proprietary right in the material disclosed hereon. This drawing is issued in confidence for engineering information only and may not be reproduced or used to manufacture anything shown hereon without permission from THE TECHNICAL MATERIEL CORPORATION to the user. This drawing is loaned for mutual assistance and is subject to recall at any time.</p>	<p>SIZE</p> <p>B</p>	<p>CODE IDENT. NO.</p> <p>82679</p>	<p>DWG NO.</p> <p>SW550</p>	<p>ISSUE</p> <p>Ø</p>
<p>NOTES</p>		<p>SCALE</p>		<p>SHEET OF</p>			