

DESG.	DIMENSION	TOL.	REMARKS
A	50	±.015	SHAFT LGN. FROM MTG. SURFACE
B*	375	±.005	BUSHING LGN. .375 STD.
C	NOT REQ	±.015	FLAT LGN. (IF REQ)
D	NOT REQ	± 3°	FLAT ANGLE
E	NOT REQ	±.005	FLAT (IF REQ)
I	250	±.015	1 st SECT. SPACING (SEE NOTE 3)
J	250	±.015	ADDITIONAL SEC. SPACING (SEE NOTE 4)
M**	218	±.015	REAR SCREW SPACING INC. NUT .093 STD.
N	125	±.093	REAR SCREW EXTENSION
Q	125	±.031	REAR SHAFT EXTENSION

REVISIONS							
ZONE	LTR	DESCRIPTION	DATE	E.M.N.NO	DRAFT	CHKD	APPD
	X	ON CHT. DSG. Q DIM. WAS .250	8/23/72			GE	

MECHANICAL SPECIFICATIONS:

NUMBER OF SECTIONS 3
 NUMBER OF POSITIONS 32 CONTINUOUS NO STOPS
 ANGLE OF THROW 11.25°

CONTACTS:

SHORTING TYPE, SECTIONS 3
 NON SHORTING TYPE, SECTIONS ---
 SILVER PLATE BRASS SECTIONS 3 OTHER ---

WAFERS

MOLDED DIALLYL PHTHALATE

ENVIRONMENT SPECS:

50 HOUR SALT SPRAY TEST

TEMP RATING:

COMMERCIAL TYPE -25 TO +85°C
 MILITARY TYPE -65 TO +85°C

MOUNTING HARDWARE TO BE SUPPLIED BY MANUFACTURER

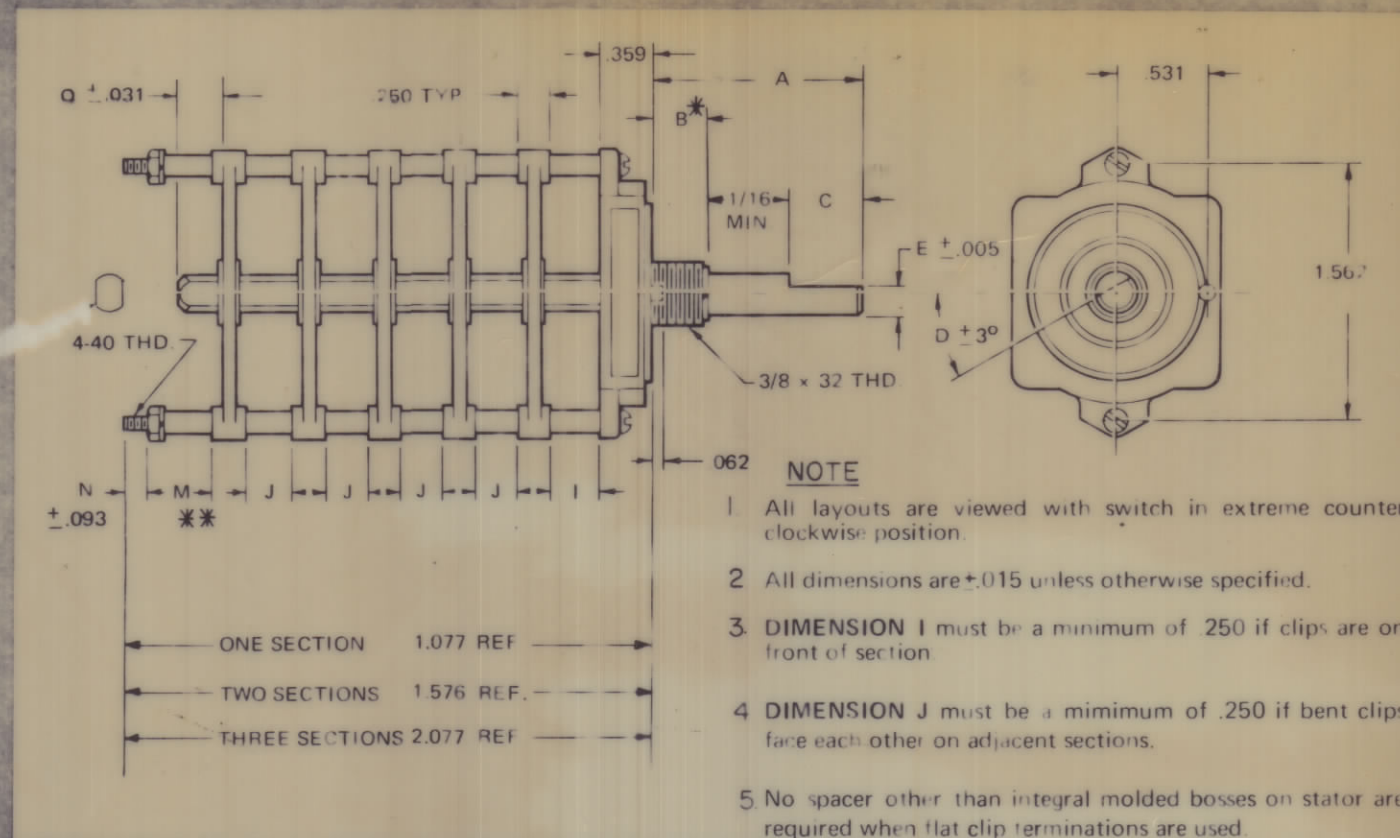
1 INTERNAL TOOTH LOCKWASHER
 1 NUT 3/8 X 32 THD

ELECTRICAL SPECIFICATIONS:

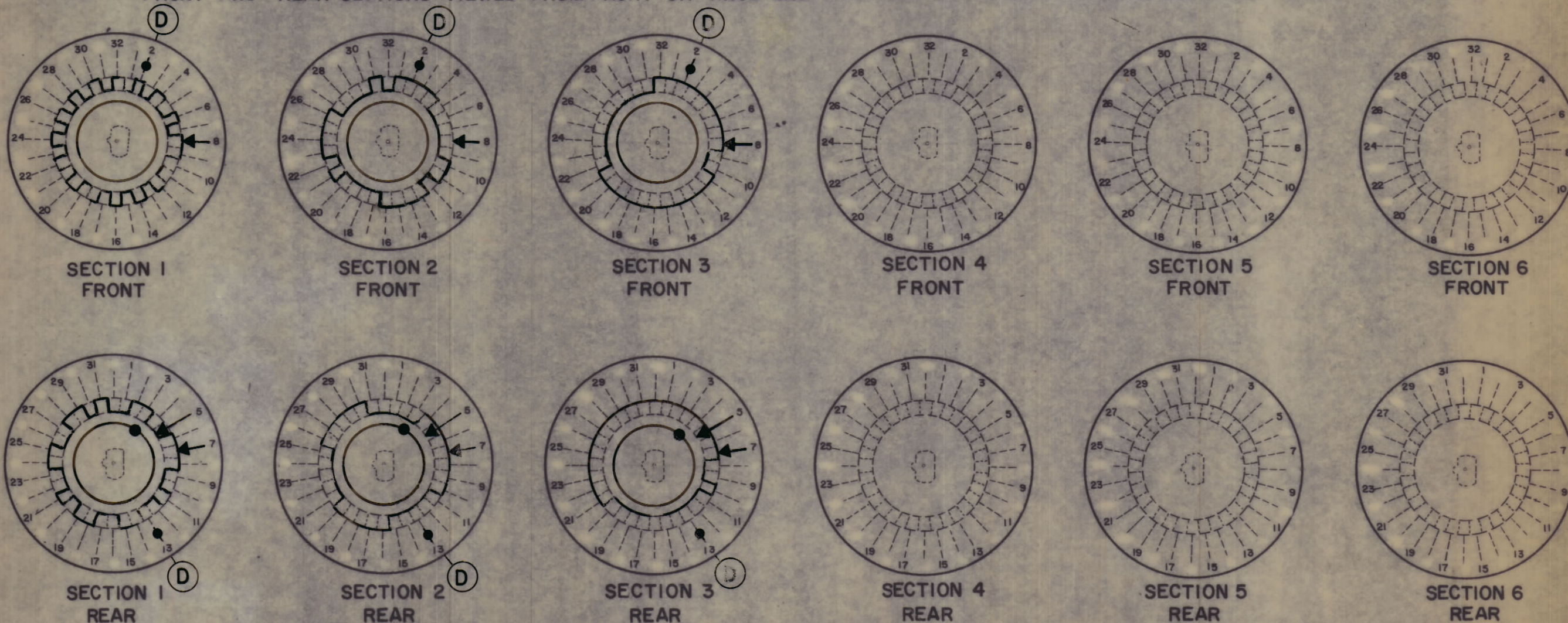
SILVER PLATED BRASS CONTACTS ARE RATED FOR RESISTIVE LOADS OF 0.5 amp @ 28 VDC OR 0.25 AMP @ 110 VAC.

* .250 & .312 AVAILABLE ON REQUEST.

** .218 REQUIRED WHEN CLIPS ARE AT, OR ADJACENT TO, STRUT POSITIONS ON REAR OF LAST SECTION. THIS IS TO PREVENT CLIPS FROM SHORTING TO STRUT NUTS.

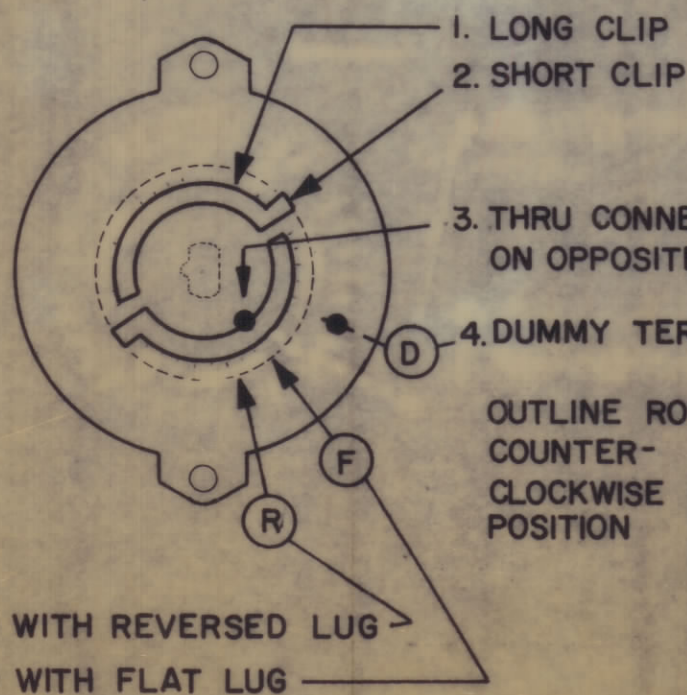


ADJACENT CLIPS ARE NOT AVAILABLE FRONT AND REAR SECTIONS VIEWED FROM FRONT OR KNOB END OF SWITCH IN EXTREME COUNTERCLOCKWISE POSITION



SWITCH, ROTARY - 32 POINT TYPE

SYMBOLS USED IN MARKING PRINT



OUTLINE ROTOR BLADES AS SHOWN, WITH SWITCH IN EXTREME COUNTER-CLOCKWISE POSITION

GPR110		
QTY / UNIT	MODEL USED ON	ASS'Y NO.
APPLICATION		
CODE		

NOTICE TO PERSONS RECEIVING THIS DRAWING
 THE TECHNICAL MATERIEL CORPORATION claims proprietary right in the material disclosed hereon. This drawing is issued in confidence for engineering information only and may not be reproduced or used to manufacture anything shown hereon without permission from THE TECHNICAL MATERIEL CORPORATION to the user. This drawing is loaned for mutual assistance and is subject to recall at any time.

QTY. REQ.	ITEM	PART NO.	DESCRIPTION	SYMBOL
O. POSE LIST OF MATERIAL				
THE TECHNICAL MATERIEL CORP. MAMARONECK, NEW YORK				
MHZ STEP SWITCH				
MATERIAL		SIZE CODE IDENT. NO. DWG NO.		ISSUE
FINISH		C 82679 SW 548		X
SCALE				SHEET OF