

DESG.	DIMENSION	TOL.	REMARK
A	1.375	±.015	SHAFT LG. FROM MTG. SURFACE
B	.250	±.005	BUSH. LG.
C		±.015	FLAT LG. (IF REQ.)
D		±2°	FLAT ANGLE (IF REQ.)
E		±.002	FLAT (IF REQUIRED)
F		±.010	KEY LOCATION (IF REQ.)
G			KEY LOCATION (IF REQ.)
M	.187	±.010	
N	.125	±.093	REAR SCR. EXT.
Q	.187	±.031	REAR SHAFT EXT.
R	1/2		1st SEC. SPACING

REVISIONS						
ZONE	LTR	DESCRIPTION	DATE	E.M.N.NO	DRAFT	CHKD APPD
	Ø	ORIG RELEASE FOR PROD	1/7/72		CV	
A		DET.XX REVISED	4/28/72	20642	GE	cl cl

TMC PART NUMBER: SW-547 STAMP ON FRONT PLATE
 FRONT PLATE SHAPE: ROUND OR OBLONG

MECHANICAL SPECIFICATIONS:
 NUMBER OF SECTIONS- 3
 NUMBER OF POSITIONS- CONT.
 ANGLE OF THROW- 30°

CONTACTS:
 SHORTING TYPE, SECTIONS _____
 NON SHORTING TYPE, SECTIONS 3
 SILVER PLATED BRASS, SECTIONS _____
 SILVER ALLOY, SECTIONS 3

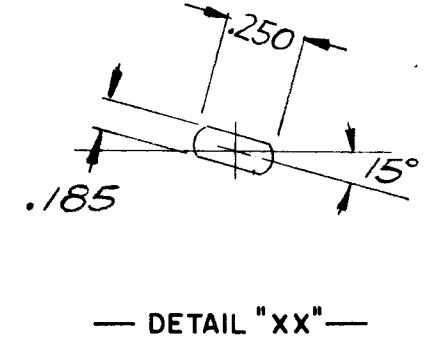
WAFERS:
 BAKELITE, SECTIONS 3
 CERAMIC, SECTIONS _____
 MYCALEX, SECTIONS _____
 IMPREGNATION (IF REQ.) _____

FINISH REQUIREMENTS:
 ARMY NAVY COMMERCIAL _____
 SALT TEST (IF REQ.) _____

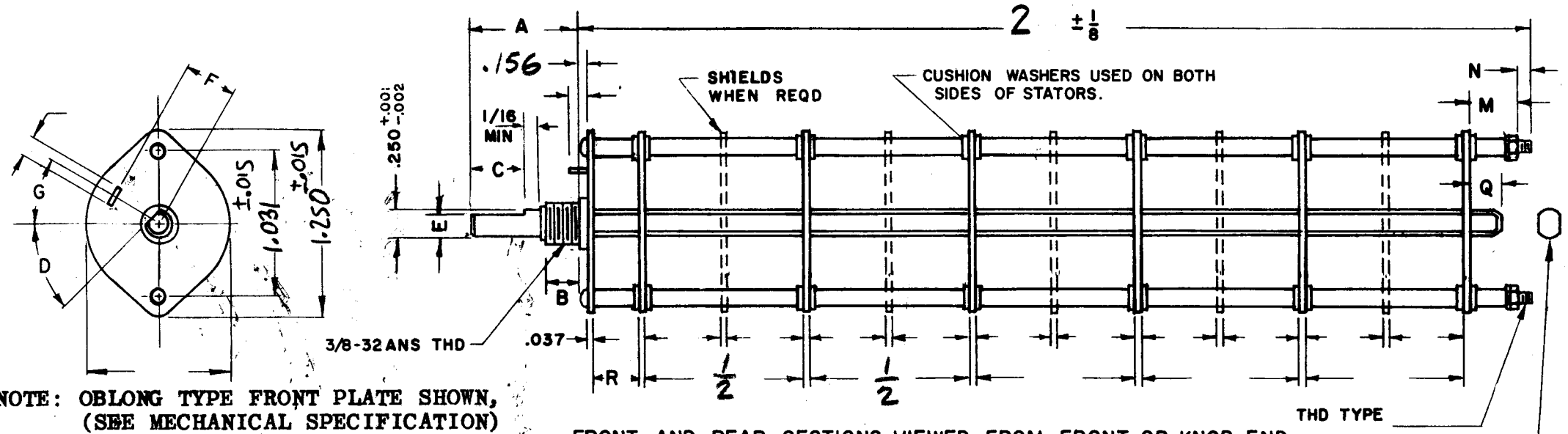
HARDWARE, TO BE SUPPLIED BY MANUFACTURER:
 1 QUAN. 3/8 -32 NUTS 1/2 ACROSS FLATS
 MATERIAL BRASS PLATING NICKEL
 1 QUAN. 3/8 INTERNAL TOOTH LOCKWASHER
 MATERIAL BRASS PLATING NICKEL

ELECTRICAL SPECIFICATIONS:
 MAXIMUM RATED VOLTAGE 110 VAC BREAK
 MAXIMUM RATED CURRENT 1 AMP BREAK

NOTE:
 FOR S401-13 ("F" TYPE) SWITCHES, THE SHAFT POSITION MUST BE SPECIFIED ON DETAIL "XX" BELOW.

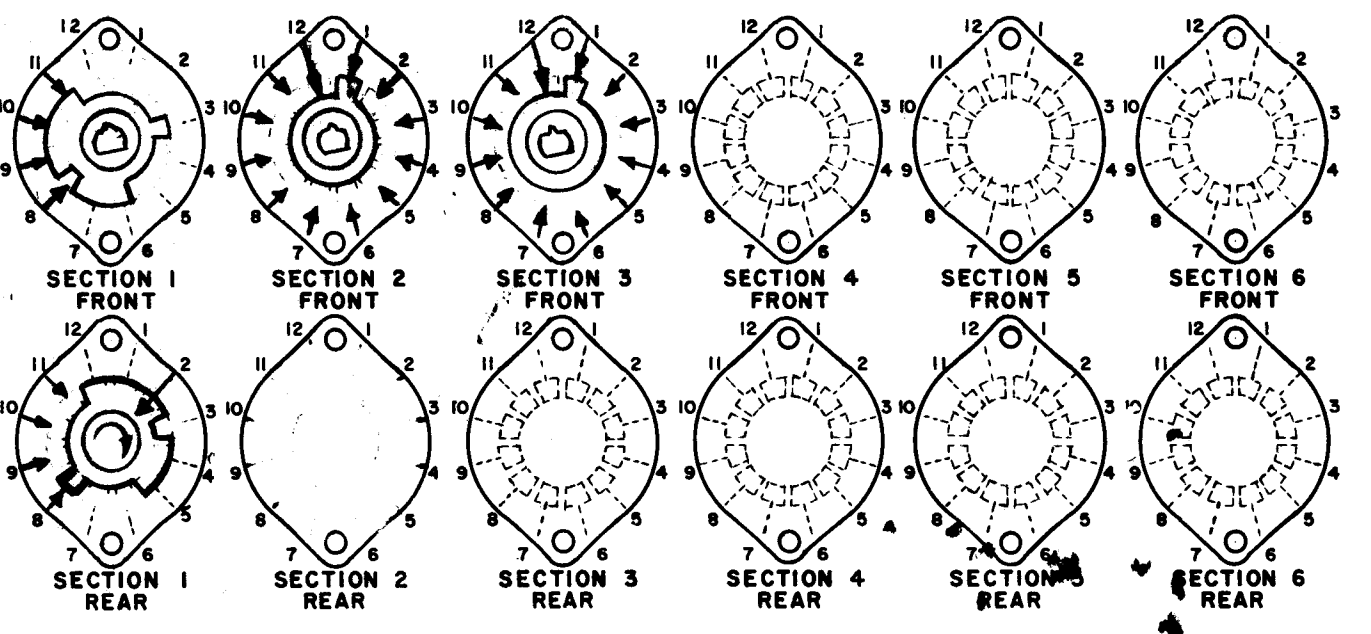
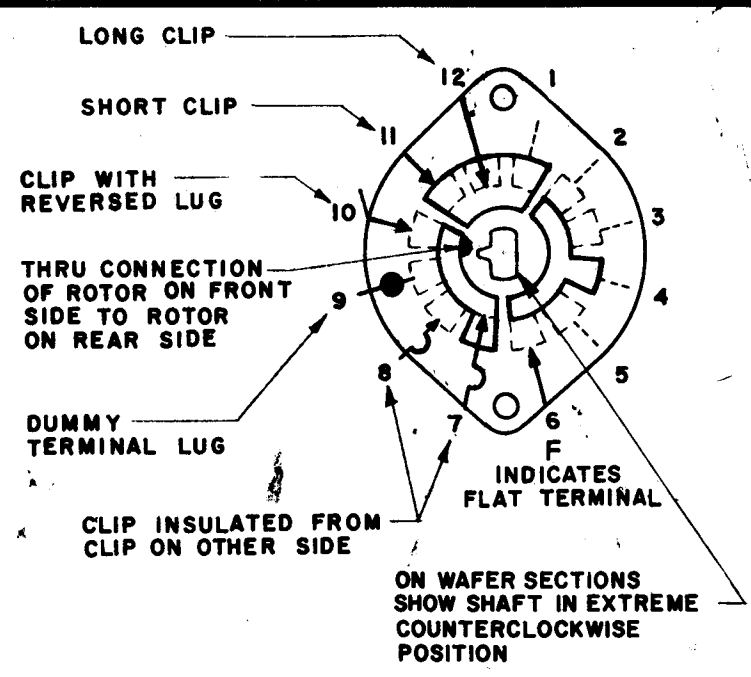


NOTES



NOTE: OBLONG TYPE FRONT PLATE SHOWN, (SEE MECHANICAL SPECIFICATION)

FRONT AND REAR SECTIONS VIEWED FROM FRONT OR KNOB END OF SWITCH IN EXTREME COUNTERCLOCKWISE POSITION. SEE NOTE (DET. "XX")



SYMBOLS USED IN MARKING PRINT

SWITCH, ROTARY - 12 POINT TYPE

QTY / UNIT		MODEL USED ON	ASS'Y NO.	UNLESS OTHERWISE SPECIFIED DIMENSIONS ARE IN INCHES AND INCLUDE CHEMICALLY APPLIED OR PLATED FINISHES	FINAL APPROVAL S. J. Mares MECH. DES. DATE 1-6-72	THE TECHNICAL MATERIEL CORP. MAMARONECK, NEW YORK					
APPLICATION		CODE		DECIMALS .X ± .05 .XX ± .01 .XXX ± .005	FRACTIONS 1/64 ANGLES 0° .30'	ELECT. DES. DATE 1-6-72	SWITCH, ROTARY MODE				
MATERIAL		NOTICE TO PERSONS RECEIVING THIS DRAWING THE TECHNICAL MATERIEL CORPORATION claims proprietary right in the material disclosed hereon. This drawing is issued in confidence for engineering information only and may not be reproduced or used to manufacture anything shown hereon without permission from THE TECHNICAL MATERIEL CORPORATION to the user. This drawing is loaned for mutual assistance and is subject to recall at any time.		FINISH	DRAWN E. Ugo DATE 12-12-71	SIZE B	CODE IDENT. NO. 82679	DWG NO. SW 547	ISSUE A	SCALE	SHEET OF