

DESG.	DIMENSION	TOL.	REMARK
A	1.375	±.015	SHAFT LG. FROM MTG. SURFACE
B	.250	±.005	BUSH. LG.
C	*	±.015	FLAT LG. (IF REQ.)
D	*	±2°	FLAT ANGLE (IF REQ.)
E	*	±.002	FLAT (IF REQUIRED)
F	*	±.010	KEY LOCATION (IF REQ.)
G	*		KEY LOCATION (IF REQ.)
M	.187	±.010	
N	.125	±.093	REAR SCR. EXT.
Q	.187	±.031	REAR SHAFT EXT.
R	1/2		1st SEC. SPACING

TMC PART NUMBER: SW-546 WITH LAST REV LETTER STAMP ON FRONT PLATE  
 FRONT PLATE SHAPE: ROUND OR OBLONG

MECHANICAL SPECIFICATIONS:  
 NUMBER OF SECTIONS- 2  
 NUMBER OF POSITIONS- CONT.  
 ANGLE OF THROW- 30°

CONTACTS:  
 SHORTING TYPE, SECTIONS \_\_\_\_\_  
 NON SHORTING TYPE, SECTIONS 2  
 SILVER PLATED BRASS, SECTIONS \_\_\_\_\_  
 SILVER ALLOY, SECTIONS 2

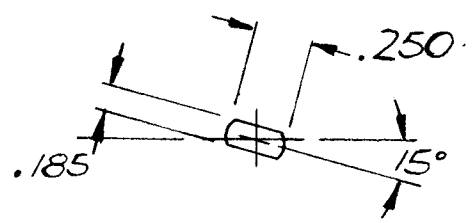
WAFERS:  
 BAKELITE, SECTIONS 2  
 CERAMIC, SECTIONS \_\_\_\_\_  
 MYCALEX, SECTIONS \_\_\_\_\_  
 IMPREGNATION (IF REQ.) \_\_\_\_\_

FINISH REQUIREMENTS:  
 ARMY NAVY COMMERCIAL \_\_\_\_\_  
 SALT TEST (IF REQ.) \_\_\_\_\_

HARDWARE, TO BE SUPPLIED BY MANUFACTURER:  
 1 QUAN. 3/8 -32 NUTS 1/2 ACROSS FLATS  
 MATERIAL BRASS PLATING NICKEL  
 1 QUAN. 3/8 INTERNAL TOOTH LOCKWASHER  
 MATERIAL BRASS PLATING NICKEL

ELECTRICAL SPECIFICATIONS:  
 MAXIMUM RATED VOLTAGE 110VAC BREAK  
 MAXIMUM RATED CURRENT 1 AMP BREAK

NOTE:  
 FOR S401-13 ("F" TYPE) SWITCHES, THE SHAFT POSITION MUST BE SPECIFIED ON DETAIL "XX" BELOW.



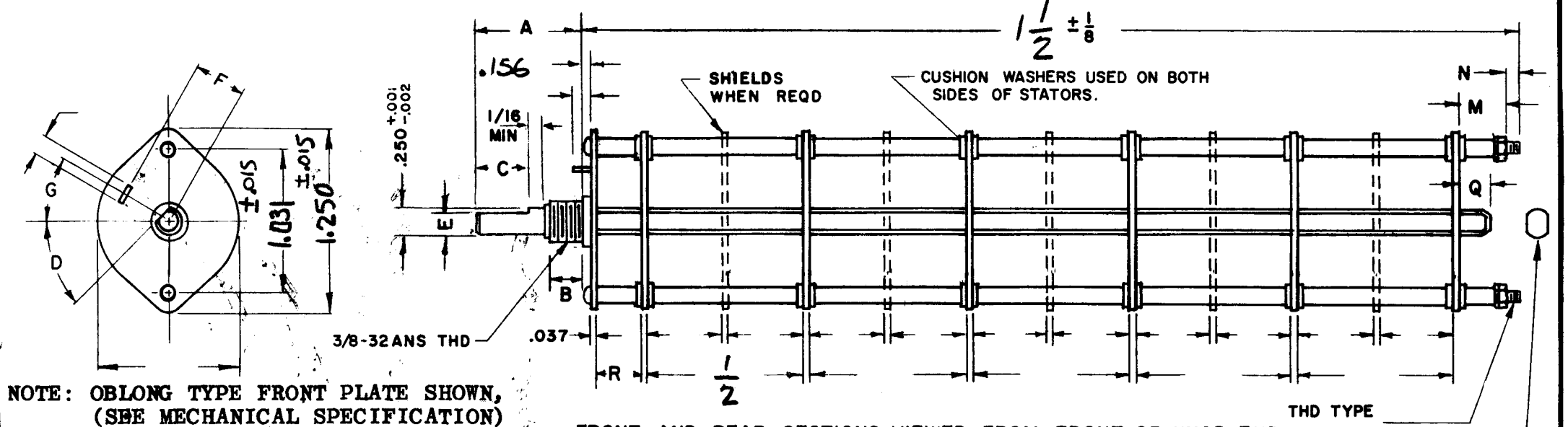
— DETAIL "XX" —

NOTES

QTY 1	UNIT	MODEL USED ON	ASS'Y NO.
		RTPR-1YA	A4912
APPLICATION			
CODE			

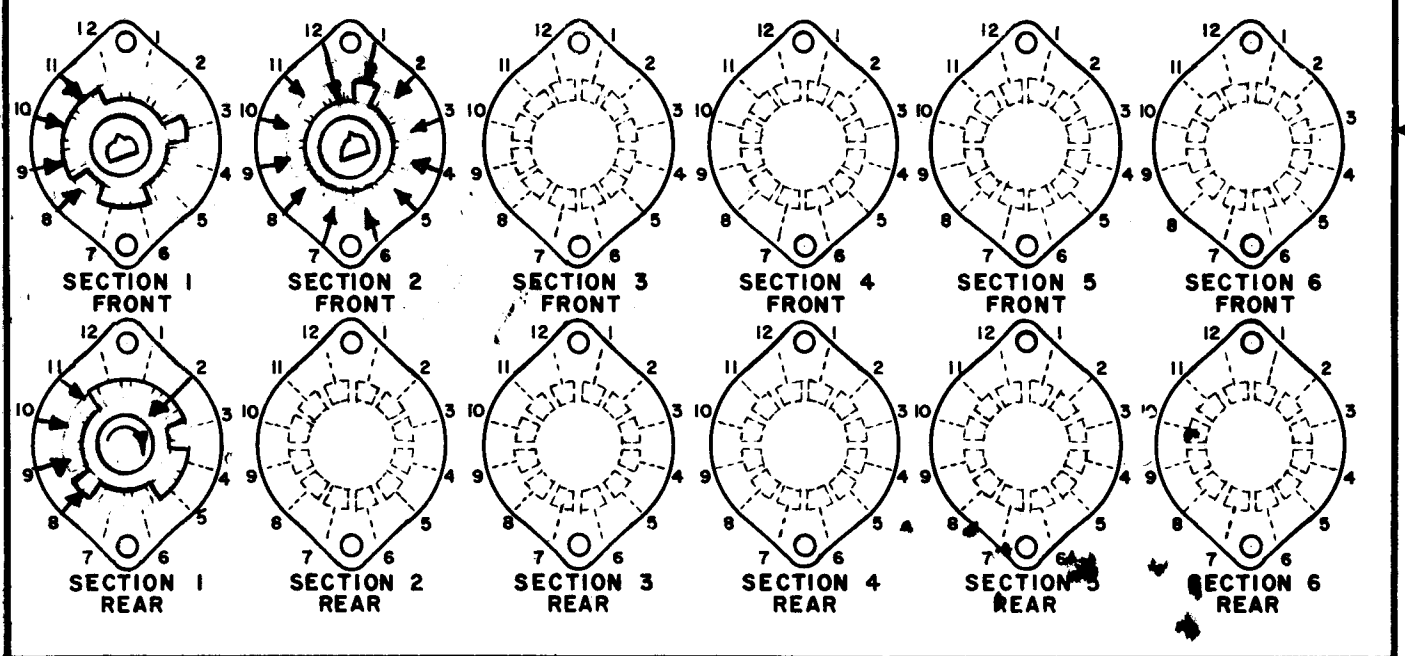
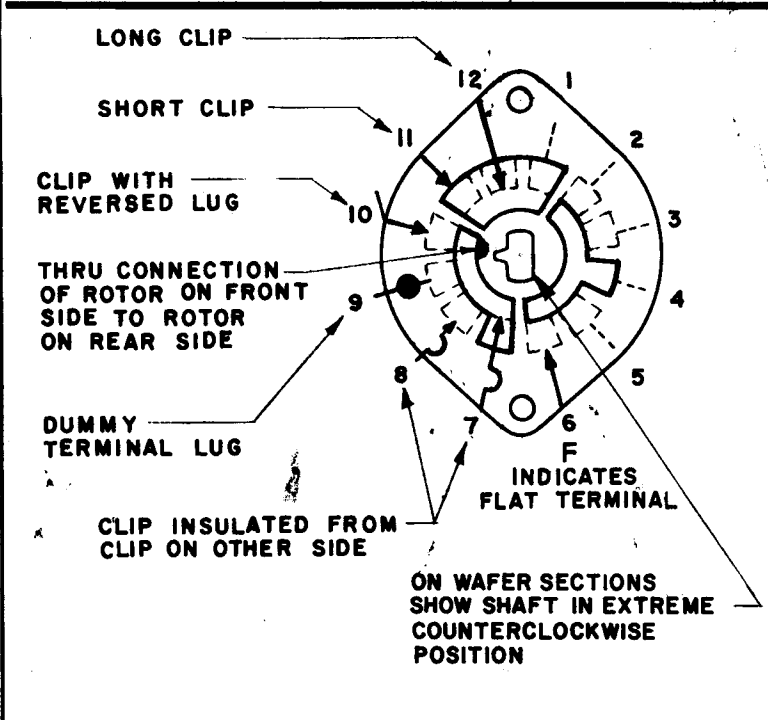
NOTICE TO PERSONS RECEIVING THIS DRAWING  
 THE TECHNICAL MATERIEL CORPORATION claims proprietary right in the material disclosed hereon. This drawing is issued in confidence for engineering information only and may not be reproduced or used to manufacture anything shown hereon without permission from THE TECHNICAL MATERIEL CORPORATION to the user. This drawing is loaned for mutual assistance and is subject to recall at any time.

REVISIONS						
ZONE	LTR	DESCRIPTION	DATE	E.M.N.NO	DRAFT	CHKD APPD
	Ø	ORIG RELEASE FOR PROD	1/7/72		CV	
A		DET.XX REVISED	4/28/72	20642	GE	U J



NOTE: OBLONG TYPE FRONT PLATE SHOWN, (SEE MECHANICAL SPECIFICATION)

FRONT AND REAR SECTIONS VIEWED FROM FRONT OR KNOB END OF SWITCH IN EXTREME COUNTERCLOCKWISE POSITION. SEE NOTE (DET."XX")



SYMBOLS USED IN MARKING PRINT

SWITCH, ROTARY - 12 POINT TYPE

UNLESS OTHERWISE SPECIFIED DIMENSIONS ARE IN INCHES AND INCLUDE CHEMICALLY APPLIED OR PLATED FINISHES		FINAL APPROVAL S. DeMans MECH. DES. RUPP	DATE 1-6-72 12-12-71	THE TECHNICAL MATERIEL CORP. MAMARONECK, NEW YORK	
DECIMALS .X ± .05 .XX ± .01 .XXX ± .005	FRACTIONS 1/64 ANGLES 0° -30'	ELECT. DES. CHECKED DRAWN	DATE 1-6-72 12-12-71	SWITCH, ROTARY CHAU.	
MATERIAL		FINISH		SIZE B	CODE IDENT. NO. 82679
				DWG NO. SW 546	ISSUE A
				SCALE	SHEET OF