

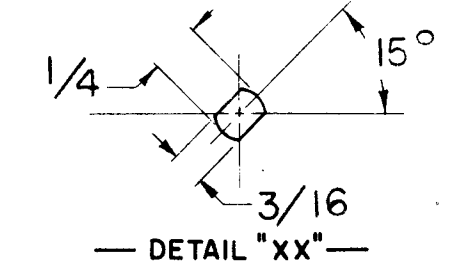
DESG.	DIMENSION	TOL.	REMARK
A	7/8	±.015	SHAFT LG. FROM MTG. SURFACE
B	3/8	±.005	BUSH. LG.
C		±.015	FLAT LG. (IF REQ.)
D		±2°	FLAT ANGLE (IF REQ.)
E		±.002	FLAT (IF REQUIRED)
F	9/16	±.010	KEY LOCATION (IF REQ.)
G			KEY LOCATION (IF REQ.)
M	5/32	±.010	
N	1/16	±.093	REAR SCR. EXT.
Q	3/16	±.031	REAR SHAFT EXT.
R	5/16		1st SEC. SPACING

REVISIONS						
ZONE	LTR	DESCRIPTION	DATE	E.M.N.NO	DRAFT	CHKD APPD
	Ø	ORIG RELEASE FOR PROD	3/30/71		CV	

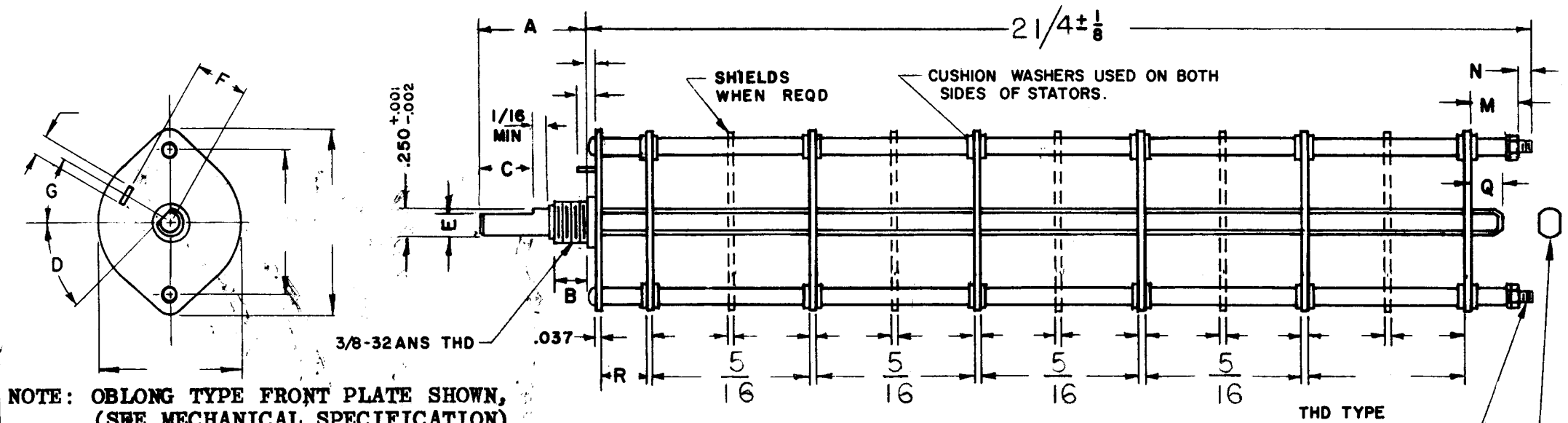
TMC PART NUMBER: SW- _____ STAMP ON FRONT PLATE
FRONT PLATE SHAPE: ROUND OR OBLONG
MECHANICAL SPECIFICATIONS:
NUMBER OF SECTIONS- 5
NUMBER OF POSITIONS- 2
ANGLE OF THROW- 30°
CONTACTS:
SHORTING TYPE, SECTIONS _____
NON SHORTING TYPE, SECTIONS _____
SILVER PLATED BRASS, SECTIONS _____
SILVER ALLOY, SECTIONS _____
WAFERS:
BAKELITE, SECTIONS ALL
CERAMIC, SECTIONS _____
MYCALEX, SECTIONS _____
IMPREGNATION (IF REQ.) _____
FINISH REQUIREMENTS:
ARMY NAVY COMMERCIAL _____
SALT TEST (IF REQ.) _____
HARDWARE, TO BE SUPPLIED BY MANUFACTURER:
QUAN. -32 NUTS ACROSS FLATS
MATERIAL PLATING
QUAN. INTERNAL TOOTH LOCKWASHER
MATERIAL PLATING
ELECTRICAL SPECIFICATIONS:
MAXIMUM RATED VOLTAGE _____
MAXIMUM RATED CURRENT _____

NOTE:
FOR S401-13 ("F" TYPE) SWITCHES, THE SHAFT POSITION MUST BE SPECIFIED ON DETAIL "XX" BELOW.

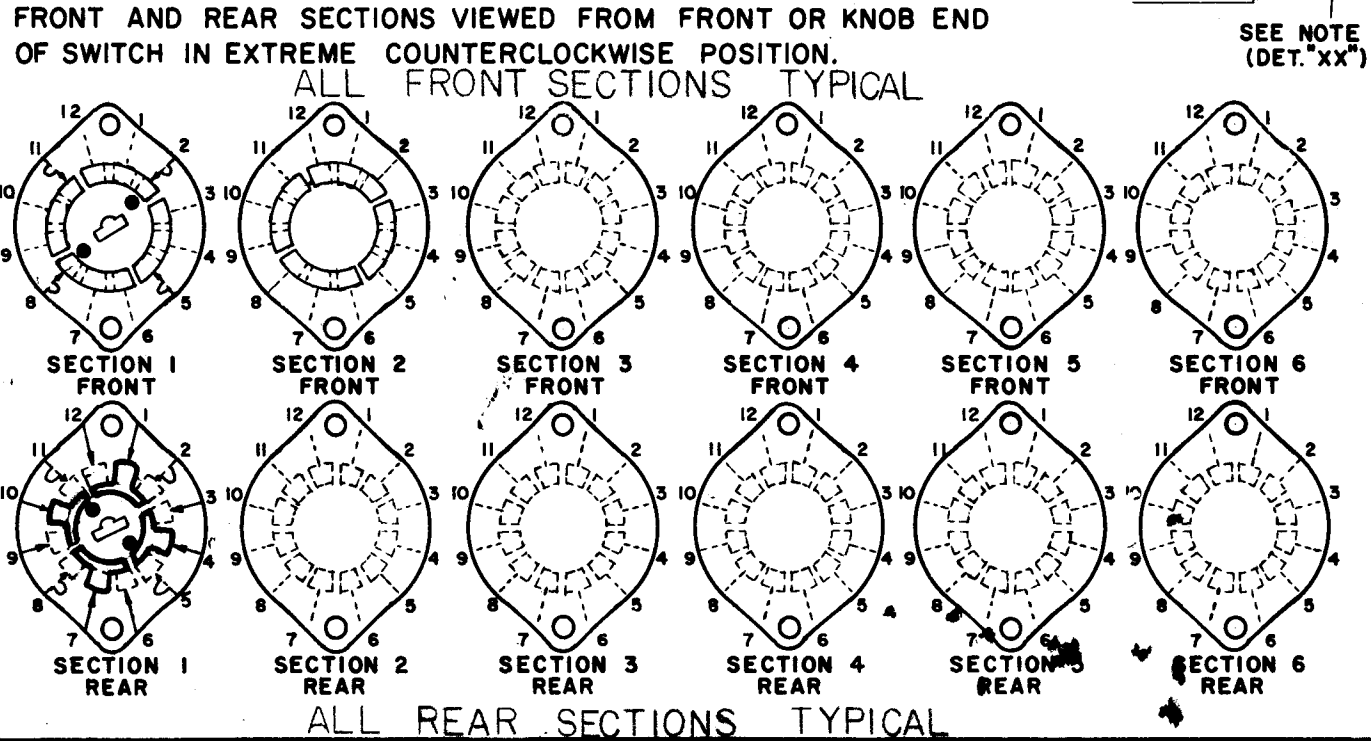
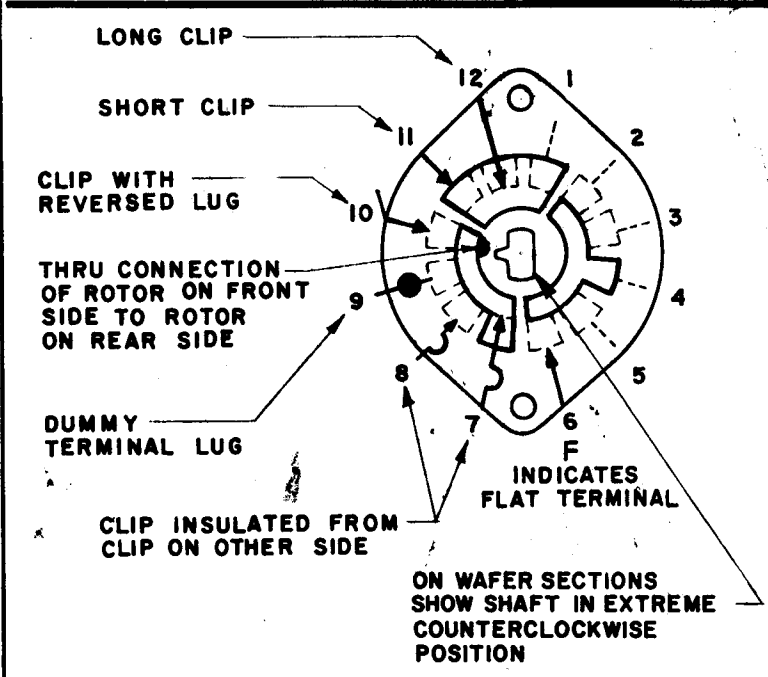
TWO POSITION SHAFT USED



NOTES



NOTE: OBLONG TYPE FRONT PLATE SHOWN, (SEE MECHANICAL SPECIFICATION)



SYMBOLS USED IN MARKING PRINT

SWITCH, ROTARY - 12 POINT TYPE

QTY / UNIT		AX 5128	MODEL USED ON	ASS'Y NO.	UNLESS OTHERWISE SPECIFIED DIMENSIONS ARE IN INCHES AND INCLUDE CHEMICALLY APPLIED OR PLATED FINISHES	FINAL APPROVAL DATE 3-30-71	THE TECHNICAL MATERIEL CORP. MAMARONECK, NEW YORK			
APPLICATION		CODE	MATERIAL		DECIMALS .X ± .05 .XX ± .01 .XXX ± .005	MECH. DES. DATE 1-2-71	SWITCH WAFER			
NOTICE TO PERSONS RECEIVING THIS DRAWING THE TECHNICAL MATERIEL CORPORATION claims proprietary right in the material disclosed hereon. This drawing is issued in confidence for engineering information only and may not be reproduced or used to manufacture anything shown hereon without permission from THE TECHNICAL MATERIEL CORPORATION to the user. This drawing is loaned for mutual assistance and is subject to recall at any time.		FINISH		FRACTIONS 1/64 ANGLES 0° .30'		ELECT. DES. DATE	SIZE B	CODE IDENT. NO. 82679	DWG NO. SW 531	ISSUE Ø
SCALE		SHEET		OF		DRAWN GE DATE 12/71				