

DESG.	DIMENSION	TOL.	REMARK
A	1 1/2	±.015	SHAFT LG. FROM MTG. SURFACE
B	3/8	±.005	BUSH. LG.
C	—	±.015	FLAT LG. (IF REQ.)
D	—	±2°	FLAT ANGLE (IF REQ.)
E	—	±.002	FLAT (IF REQUIRED)
F	17/32	±.010	KEY LOCATION (IF REQ.)
G	90°		KEY LOCATION (IF REQ.)
M	1/8	±.010	
N	1/8	±.093	REAR SCR. EXT.
Q	1/8	±.031	REAR SHAFT EXT.
R	1/2		1st SEC. SPACING

TMC PART NUMBER: SW-524 STAMP ON FRONT PLATE  
 FRONT PLATE SHAPE: ROUND OR OBLONG ✓

MECHANICAL SPECIFICATIONS:  
 NUMBER OF SECTIONS- 3  
 NUMBER OF POSITIONS- CONTINUOUS  
 ANGLE OF THROW- CONTINUOUS (OMIT INDEX)  
 CONTACTS:  
 SHORTING TYPE, SECTIONS 2, 3  
 NON SHORTING TYPE, SECTIONS  
 SILVER PLATED BRASS, SECTIONS 1, 2, 3  
 SILVER ALLOY, SECTIONS

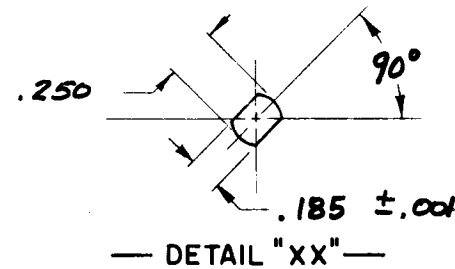
WAFERS:  
 BAKELITE, SECTIONS 1, 2, 3  
 CERAMIC, SECTIONS  
 MYCALEX, SECTIONS  
 IMPREGNATION (IF REQ.)

FINISH REQUIREMENTS:  
 ARMY NAVY COMMERCIAL ✓  
 SALT TEST (IF REQ.)

HARDWARE, TO BE SUPPLIED BY MANUFACTURER:  
 1 QUAN. 3/8 -32 NUTS 1/2 ACROSS FLATS  
 MATERIAL STEEL PLATING CADMIUM  
 1 QUAN. 3/8 INTERNAL TOOTH LOCKWASHER  
 MATERIAL STEEL PLATING CADMIUM

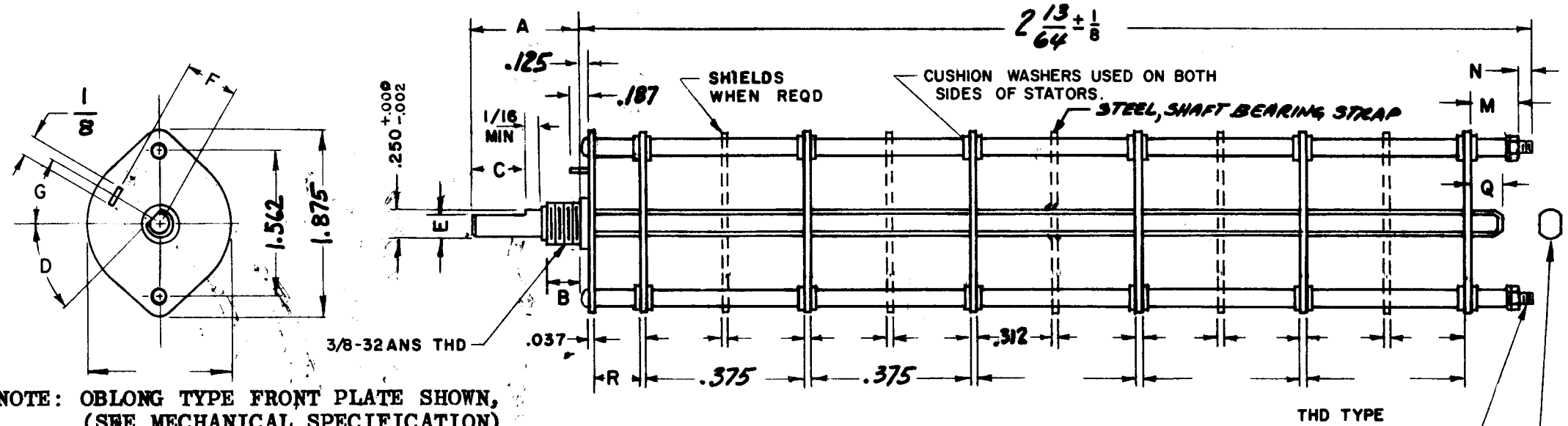
ELECTRICAL SPECIFICATIONS:  
 MAXIMUM RATED VOLTAGE —  
 MAXIMUM RATED CURRENT —

NOTE:  
 FOR S401-13 ("F" TYPE) SWITCHES, THE SHAFT POSITION MUST BE SPECIFIED ON DETAIL "XX" BELOW.



NOTES

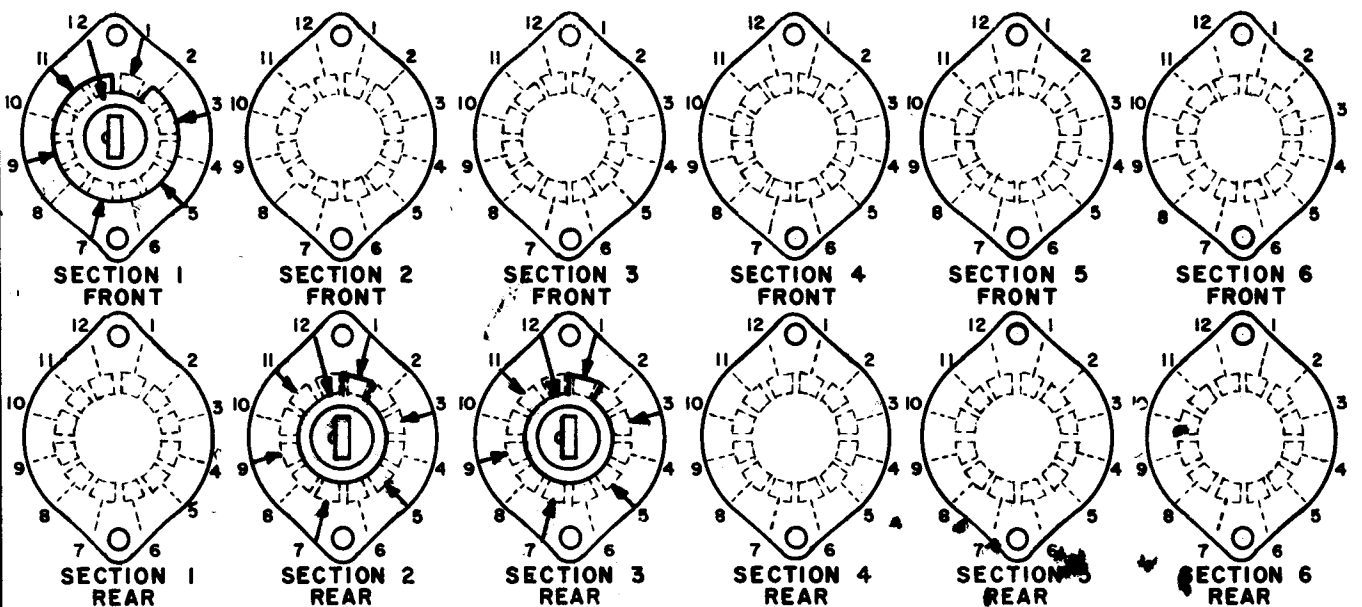
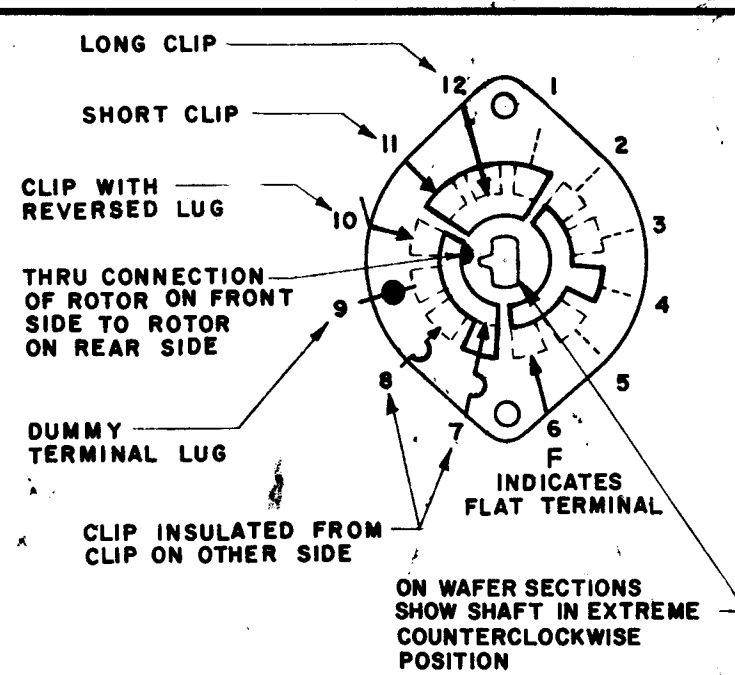
REVISIONS						
ZONE	LTR	DESCRIPTION	DATE	E.M.N.NO	DRAFT	CHKD APPD
		ORIGINAL RELEASE	5/4/73		CS	



NOTE: OBLONG TYPE FRONT PLATE SHOWN, (SEE MECHANICAL SPECIFICATION)

FRONT AND REAR SECTIONS VIEWED FROM FRONT OR KNOB END OF SWITCH IN EXTREME COUNTERCLOCKWISE POSITION.

SEE NOTE (DET. "XX")



SYMBOLS USED IN MARKING PRINT

# SWITCH, ROTARY - 12 POINT TYPE H

1		AF109	FINAL APPROVAL	J. ANGER	DATE	8/8/69	THE TECHNICAL MATERIEL CORP.	
QTY / UNIT	MODEL USED ON	ASS'Y NO.	MECH. DES.	J. ANGER	DATE	8/8/69	MAMARONECK, NEW YORK	
APPLICATION			ELECT. DES.		DATE		SWITCH, ROTARY	
CODE			CHECKED		DATE		SIZE B CODE IDENT. NO. 82679 DWG NO. SW-524 ISSUE	
MATERIAL			DRAWN	J. ANGER	DATE	8/8/69	SCALE - SHEET 1 OF 1	
FINISH			NOTICE TO PERSONS RECEIVING THIS DRAWING			THE TECHNICAL MATERIEL CORPORATION claims proprietary right in the material disclosed hereon. This drawing is issued in confidence for engineering information only and may not be reproduced or used to manufacture anything shown hereon without permission from THE TECHNICAL MATERIEL CORPORATION to the user. This drawing is loaned for mutual assistance and is subject to recall at any time.		