

DESG.	DIMENSION	TOL.	REMARK
A	3/4	±.015	SHAFT LG. FROM MTG. SURFACE
B	3/8	±.005	BUSH. LG.
C	—	±.015	FLAT LG. (IF REQ.)
D	—	±2°	FLAT ANGLE (IF REQ.)
E	—	±.002	FLAT (IF REQUIRED)
F	17/32	±.010	KEY LOCATION (IF REQ.)
G	180°		KEY LOCATION (IF REQ.)
M	5/32	±.010	
N	1/8	±.093	REAR SCR. EXT.
Q	3/16	±.031	REAR SHAFT EXT.
R	9/32		1st SEC. SPACING

TMC PART NUMBER: SW-517 STAMP ON FRONT PLATE
FRONT PLATE SHAPE: ROUND X OR OBLONG

MECHANICAL SPECIFICATIONS:

NUMBER OF SECTIONS- 2

NUMBER OF POSITIONS- 4

ANGLE OF THROW- 30°

CONTACTS:

SHORTING TYPE, SECTIONS

NON SHORTING TYPE, SECTIONS 1, 2

SILVER PLATED BRASS, SECTIONS 1, 2

SILVER ALLOY, SECTIONS

WAFERS:

BAKELITE, SECTIONS 1, 2

CERAMIC, SECTIONS

MYCALEX, SECTIONS

IMPREGNATION (IF REQ.)

FINISH REQUIREMENTS:

ARMY NAVY COMMERCIAL X

SALT TEST (IF REQ.)

HARDWARE, TO BE SUPPLIED BY MANUFACTURER:

1 QUAN. 3/8 -32 NUTS 1/2 ACROSS FLATS

MATERIAL STEEL PLATING

1 QUAN. 3/8 INTERNAL TOOTH LOCKWASHER

MATERIAL STEEL PLATING CADMIUM

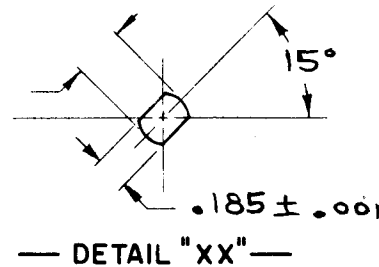
ELECTRICAL SPECIFICATIONS:

MAXIMUM RATED VOLTAGE

MAXIMUM RATED CURRENT

NOTE:

FOR S401-13 ("F" TYPE) SWITCHES, THE SHAFT POSITION MUST BE SPECIFIED ON DETAIL "XX" BELOW.

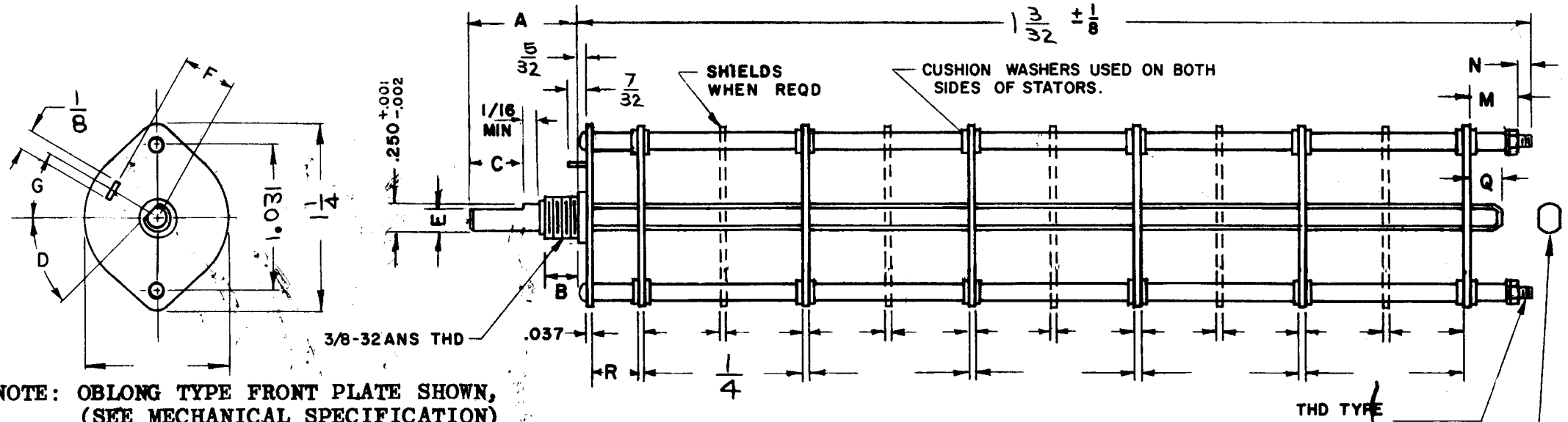


NOTES

QTY / UNIT	CHGM -4	AS135
	MODEL USED ON	ASS'Y NO.
APPLICATION		
	CODE	

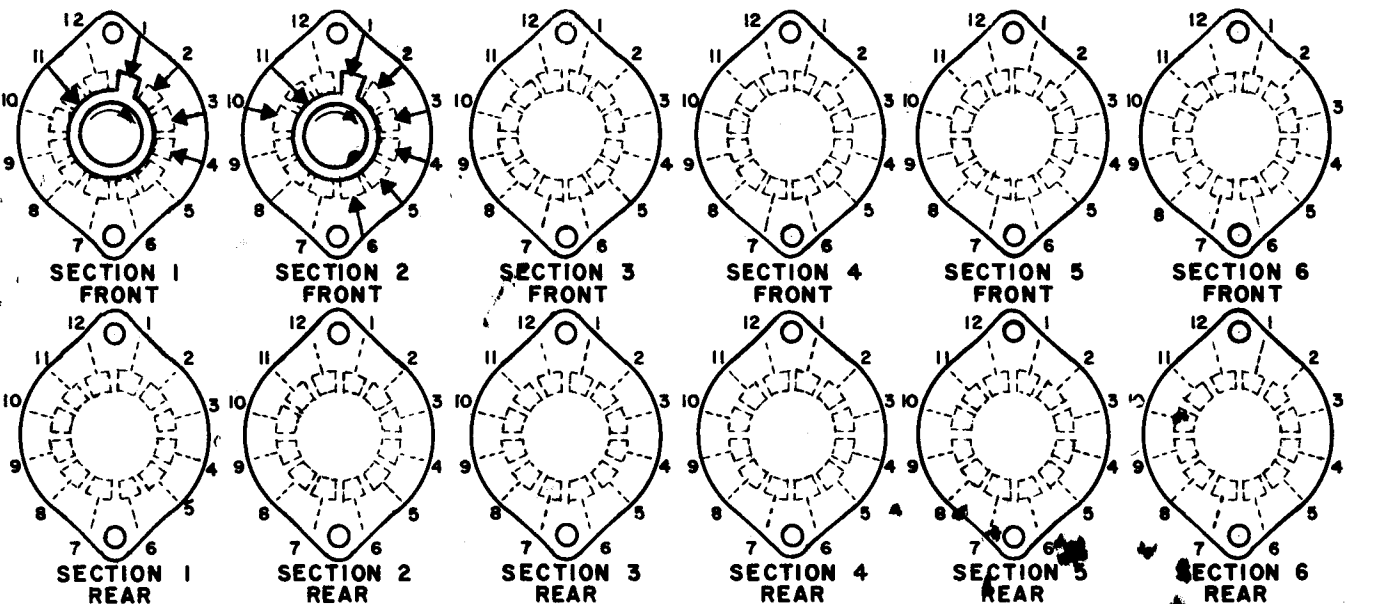
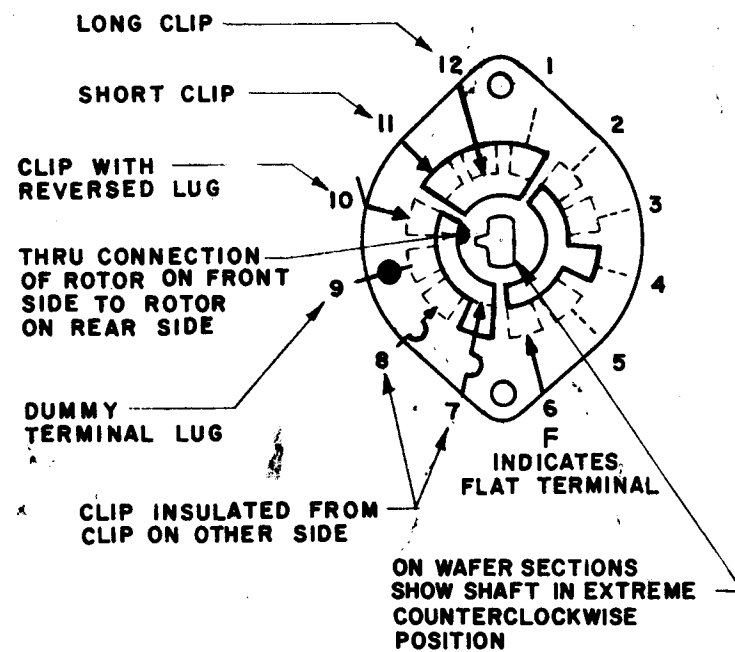
NOTICE TO PERSONS RECEIVING THIS DRAWING
THE TECHNICAL MATERIEL CORPORATION claims proprietary right in the material disclosed hereon. This drawing is issued in confidence for engineering information only and may not be reproduced or used to manufacture anything shown hereon without permission from THE TECHNICAL MATERIEL CORPORATION to the user. This drawing is loaned for mutual assistance and is subject to recall at any time.

REVISIONS						
ZONE	LTR	DESCRIPTION	DATE	E.M.N.NO	DRAFT	CHKD APPD
	Ø	ORIG. RELEASE FOR PROD.	3/21/69		RG	



FRONT AND REAR SECTIONS VIEWED FROM FRONT OR KNOB END OF SWITCH IN EXTREME COUNTERCLOCKWISE POSITION.

SEE NOTE (DET. "XX")



SWITCH, ROTARY - 12 POINT TYPE

UNLESS OTHERWISE SPECIFIED DIMENSIONS ARE IN INCHES AND INCLUDE CHEMICALLY APPLIED OR PLATED FINISHES		APPROVAL	DATE	THE TECHNICAL MATERIEL CORP. MAMARONECK, NEW YORK	
		<i>[Signature]</i>	3/20/69		
DECIMALS .X ± .05 .XX ± .01 .XXX ± .005		ELECT. DES. <i>[Signature]</i>		DATE 3-20-69	
FRACTIONS 1/64		CHECKED <i>[Signature]</i>		DATE 3/20/69	
TOLS. ANGLES 0°-30'		DRAWN <i>[Signature]</i>		DATE 3-20-69	
MATERIAL		FINISH		SIZE B	CODE IDENT. NO. 82679
				DWG NO. SW 517	ISSUE Ø
				SCALE	SHEET OF