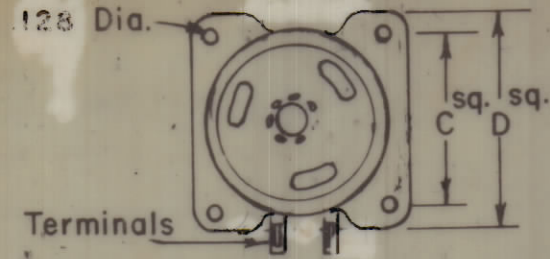


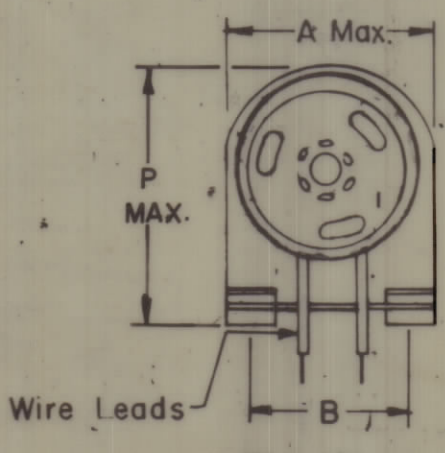
DESIG.	DIMENSION	TOL.	REMARKS
A			Foot mount only
B			Foot mount only
C	1.00		Flange mount only
D	1 3/8		Flange mount only
E			Max. over clips
F			From rear plate to shaft end
G			Total length for foot mount
H			Foot mount only.
J	25/32		
K			
L			Last wafer to rear plate
M	2 29/32		Total length (to end of rear plate)
N			Size 3 - 1 5/32 Size 5 - 1 9/16
P		MAX.	FOOT MOUNT ONLY

MANUFACTURERS P/N 170502-001

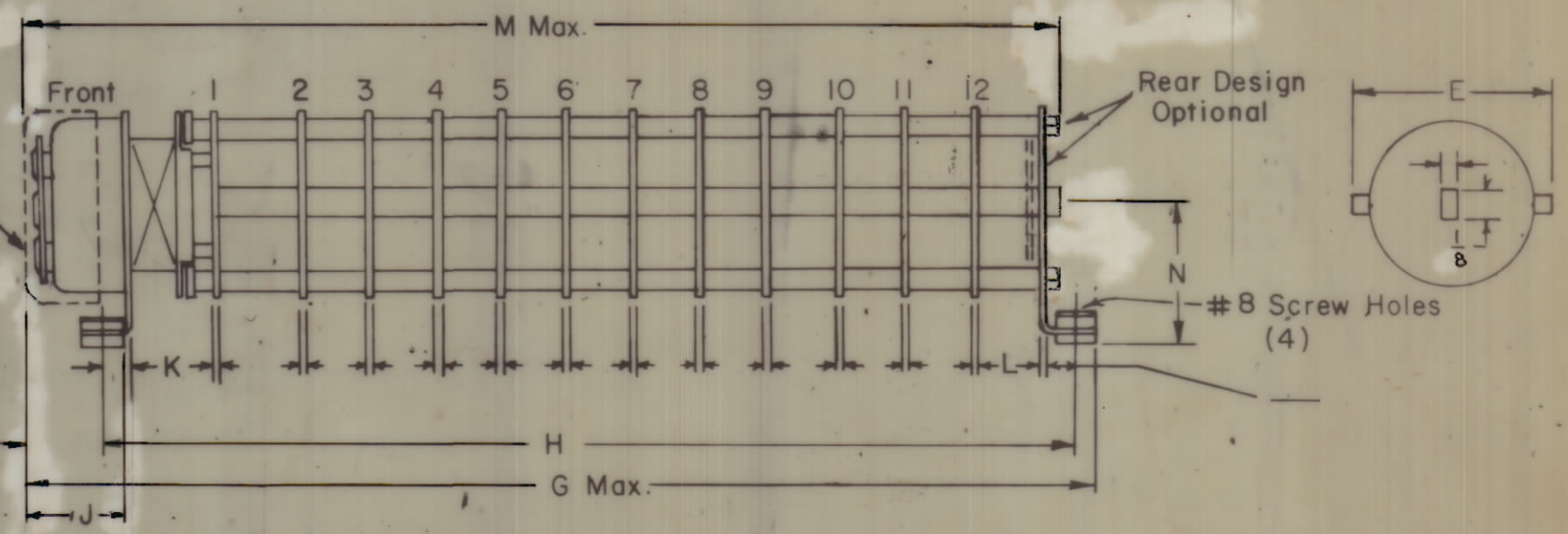
REVISIONS						
ZONE	SYM	DESCRIPTION	DATE	E.M.N. NO.	DRAFT	CHKD
		ORIGINAL RELEASE FOR PRODUCTION	2-24-69		RG	JDe



Flange Mount (REF.)



Foot Mount (REF.)



Sol. Size 3 - 19/32 Max.
Sol. Size 5 - 15/16 Max.
(USE FOR FOOT MTG ONLY)

Switch Specifications

Mechanical

Rotation of Solenoid (viewed from solenoid end): CW CCW
 No. of sections: 4
 No. of positions: 6
 Angle of throw: 30°
 Type Mounting: Flange Foot
 Solenoid Connections: Solder lug Wire

Contacts:

HOMING NOTCH type, Sections 1
 Non-shorting, Sections 2, 3, 4
 Silver plated Brass
 Silver alloy

Wafer material: Phenolic Other
 Finish: Comm. 50hr. OR 200hr. salt spray
 Opr. temp.: -55°C TO +60°C
 Wafer Type F OR EQUIV.

Electrical Specs.

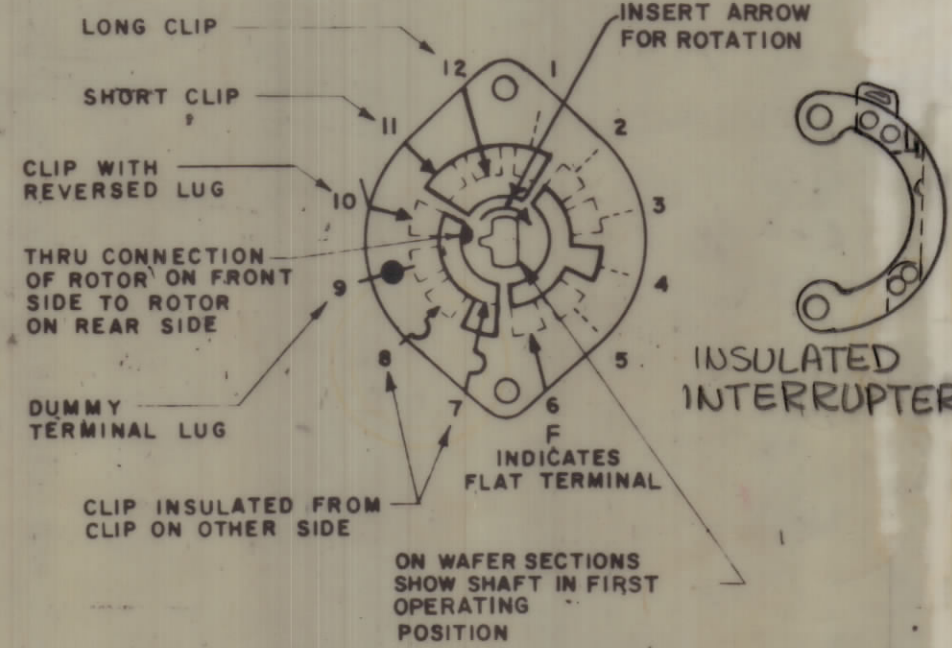
Current rating: Carry 5 amps resistive max.
 Break @ 24 volts: 1.2 amp resistive max.
 Break @ 115 volts: 25 amp resistive max.
 Dielectric Strength: 1000v clip to clip, 500v insulated clips back to back.

Coil Specifications

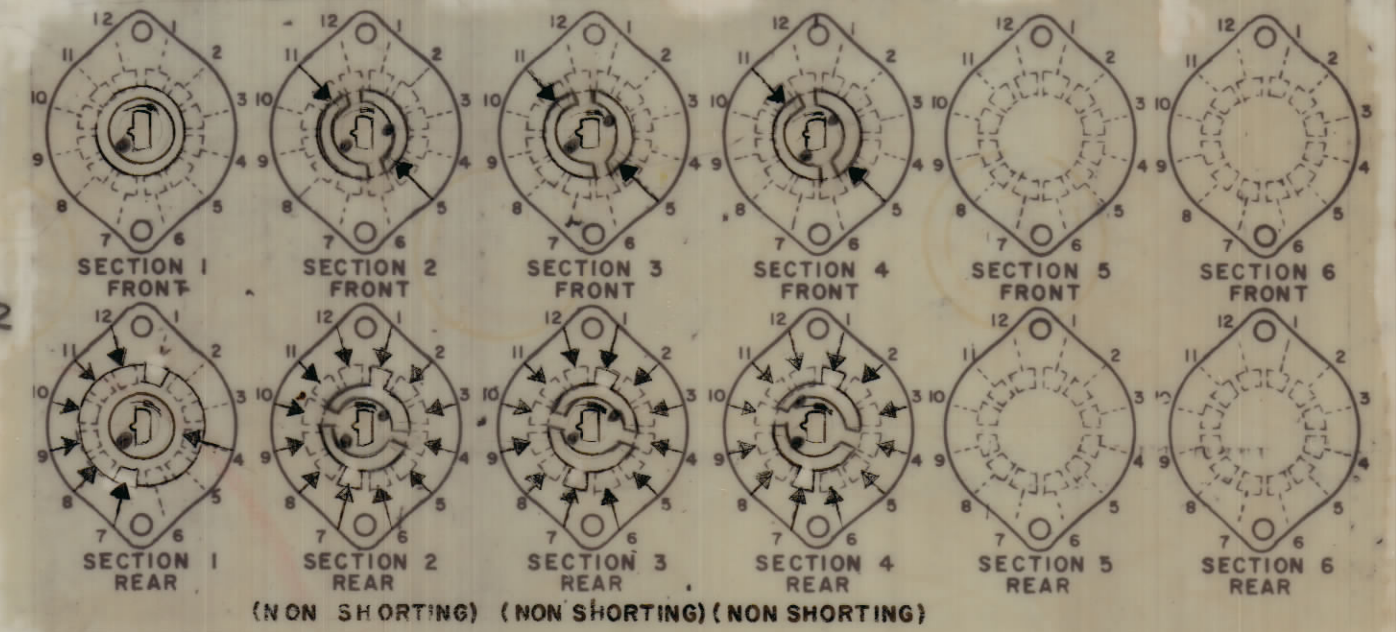
Solenoid Size: 2E
 Coil Resistance @ 20° C.
 Voltage: 28V ± 0.2%
 Gross Starting Torque @ 20° C:
 Duty Cycle:
 Rotary Stroke Angle:
 Electric Strength:
 Dust Cover: with w/out

NOTES:

- View wafers from solenoid end of switch.
- Rear side of wafer viewed as if looking through wafers, from solenoid end.
- Orientation of wafer is with pin 1 in the one o'clock position as viewed from the solenoid end with solenoid connecting wires or terminals facing down.



SYMBOLS USED IN MARKING PRINT



NOTE: ALL CLIPS ARE FLAT TYPE

STANDARD DRAWING

NOTES

I	RTMU 42A	AX5074
QTY/UNIT	MODEL USED ON	ASSY. NO.
SCALE	CODE	
Do NOT SCALE		

THE CONTENTS OF THIS DRAWING ARE THE EXCLUSIVE PROPERTY OF THE TECHNICAL MATERIEL CORP. ITS UNAUTHORIZED USE OR REPRODUCTION IN WHOLE OR IN PART IS STRICTLY FORBIDDEN.

REQ'D.	ITEM	PART NUMBER	DESCRIPTION	SYMBOL
LIST OF MATERIAL				
THE TECHNICAL MATERIEL CORP. MAMARONECK, NEW YORK				
TITLE SWITCH, ROTARY, SOLENOID 12 POSITION				
DRAWN	DATE	CHECKED	DATE	FINAL APPROVAT
DeWitt	2 6 69	Wro		Sal DiMarco
DECIMALS			FRACTIONS	
X ± .05			± 1/64	
XX ± .01			ANGLES	
XXX ± .005			± 1°	
ELECT. DES.			DATE	
MECH. DES.			DATE	
SW-516				REV. LTR.

SW-516