

MFR P/N	SIZE	POS	A	B	C	D	E	F	G	H	I	J	WAF
173658-001	5S	18	3-1/8	1-25/32	1-3/8	11/16	2-3/4	1-6/64	27/32	1.098	5-3/8	4-1/4	7

REVISIONS						
ZONE	LTR	DESCRIPTION	DATE	E.M.N.NO	DRAFT	CHKD
	X	EXPERIMENTAL RELEASE	12/2/68		C.V.	
	Ø	ORIGINAL RELEASE FOR PRODUCTION	12-9-68		R.B.	
	A	(A) DIM. WAS 3/16, (E) WAS 21/16, (H) WAS 1.067	1/20/69	19215	K.H.	J.D. S.D.

SWITCH SPECIFICATIONS

MECHANICAL

ROTATION OF SOLENOID (viewed from solenoid end): CW CCW
 NO. OF SECTIONS: 7
 NO. OF POSITIONS: 18
 ANGLE OF THROW: 20°
 TYPE MOUNTING: FLANGE FOOT
 SOLENOID CONNECTIONS: SOLDER LUG WIRE

CONTACTS

NOTCH TYPE SECTIONS: AS SHOWN
 NON-SHORTING SECTIONS: AS SHOWN
 SILVER PLATED BRASS
 SILVER ALLOY

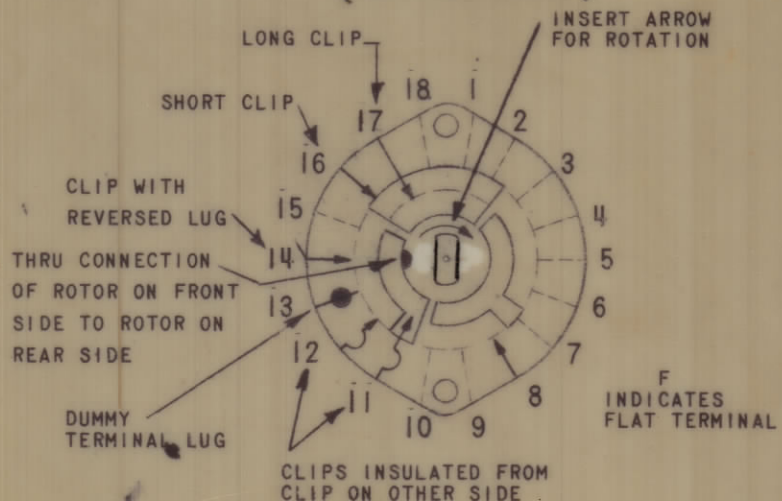
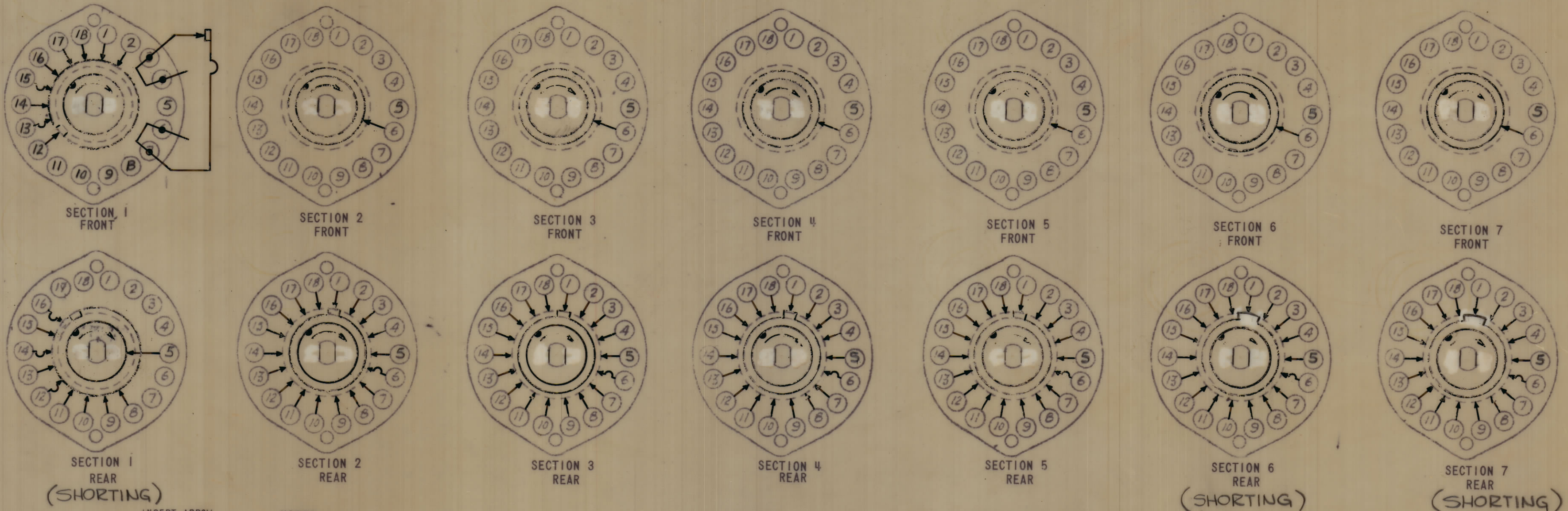
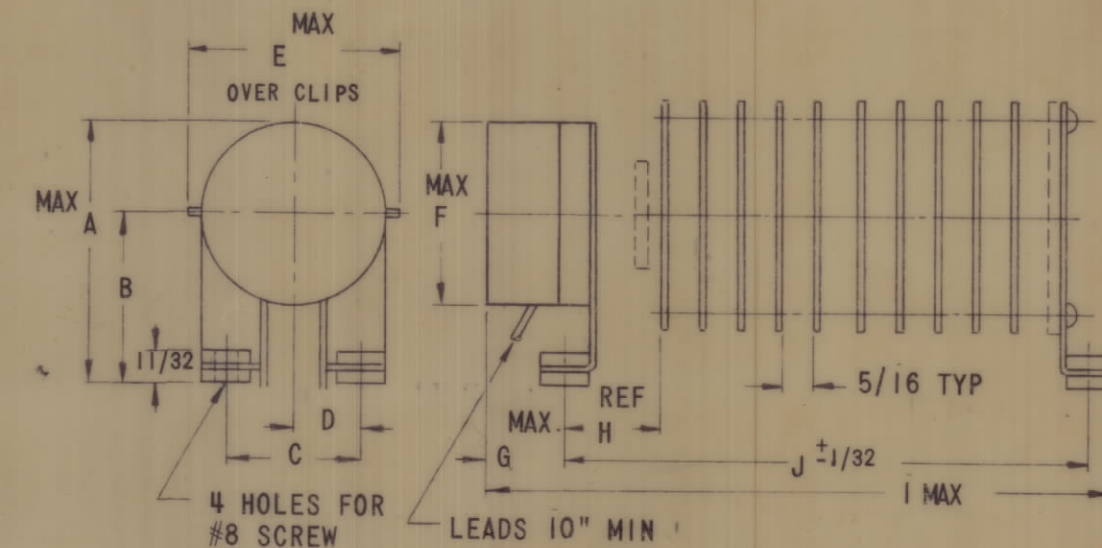
WAFER MATERIAL: PHENOLIC OTHER
 FINISH: COMM 50HR OR 50HR SALT SPRAY
 OPERATION TEMPERATURE: -0°C to +80°C
 WAFER TYPE: 5S

ELECTRICAL

CURRENT RATING: CARRY 10 AMPS RESISTIVE MAX
 BREAK @24 VOLTS: 5 AMP RESISTIVE MAX
 BREAK @115 VOLTS: 1.0 AMP RESISTIVE MAX
 DIELECTRIC STRENGTH: 1000V RMS CLIP TO CLIP, 500V INSULATED
 CLIPS BACK TO BACK

SOLENOID SIZE: 5S COIL SPECIFICATIONS

COIL RESISTANCE @20°C: 11.1Ω ± 5%
 VOLTAGE: 28V
 GROSS STARTING TORQUE @20°C:
 DUTY CYCLE: .1
 ROTARY STROKE ANGLE: 25°
 ELECTRIC STRENGTH 1200 VRMS
 DUST COVER WITH W/OUT



- NOTES:
- VIEW WAFERS FROM SOLENOID END OF SWITCH.
 - REAR SIDE OF WAFER VIEWED AS IF LOOKING THROUGH WAFER FROM SOLENOID END.
 - ORIENTATION OF WAFER IS WITH PIN 1 IN THE ONE O'CLOCK POSITION AS VIEWED FROM THE SOLENOID END WITH SOLENOID CONNECTING WIRES OR TERMINALS FACING DOWN.

1	RTTD - 4	
QTY / UNIT	MODEL USED ON	ASS'Y NO.
APPLICATION		
CODE		

NOTICE TO PERSONS RECEIVING THIS DRAWING
 THE TECHNICAL MATERIEL CORPORATION claims proprietary right in the material disclosed hereon. This drawing is issued in confidence for engineering information only and may not be reproduced or used to manufacture anything shown hereon without permission from THE TECHNICAL MATERIEL CORPORATION to the user. This drawing is loaned for mutual assistance and is subject to recall at any time.

QTY. REQ.	ITEM	PART NO.	DESCRIPTION	SYMBOL
LIST OF MATERIAL				
THE TECHNICAL MATERIEL CORP. MAMARONECK, NEW YORK				
SWITCH, ROTARY, SOLENOID 18 POSITION				
MATERIAL			SIZE	ISSUE
FINISH			CODE IDENT. NO.	DWG NO.
			C. 82679	SW 513
			SCALE	SHEET OF
				4