

FLANGE MTG. SECTION "A"			FOOT MTG. SECTION "B"		
DESG	DIM.	REMARKS	DESG	DIM.	REMARKS
A	4 3/4	OVERALL SHAFT LENGTH	A		OVERALL SHAFT LENGTH
B	13/8	SHAFT LENGTH TO REAR PLATE	B		SHAFT LENGTH TO REAR PLATE
C	13/4	WIDTH CLIP TO CLIP	C		WIDTH CLIP TO CLIP
D	19/16	LENGTH & WIDTH OF FLANGE	F		DISTANCE FROM FRONT FOOT MTG. TO DUST COVER
E	1/250	HOLE MTG. OF FLANGE	H		FOOT MTG. SIDE VIEW
F	15/16	DISTANCE FROM FLANGE TO DUST COVER	J		SIDE VIEW OVERALL
			K		SIDE VIEW WIDTH OVERALL
			G		LENGTH FOOT TO FOOT

REVISIONS							
ZONE	SYM	DESCRIPTION	DATE	EM.N. NO.	DRAFT	CHKD	APPD
	X	EXP. RELEASE	11/7/68		K.H.		
	Ø	ORIGINAL RELEASE FOR PRODUCTION	11/15/68		P.G.		
	A	COMPLETELY REVISED	2-5-69	19287	GE		
	B	COMPLETELY REVISED	9/10/69	19542	L.H.		
	C	FINISH WAS 100 hr SALT SPRAY, FD DELETE	2-23-70	19756	KD		

Switch Specifications

Mechanical

Rotation of Solenoid (viewed from solenoid end): CW ___ CCW X (LEFT HAND)
 No. of sections: 2
 No. of positions: 12
 Angle of throw: 30°
 Type Mounting: Flange X Foot ___
 Solenoid Connections: Solder lug ___ Wire X

Contacts

HOMING NOTCH type, Sections 1
 Non-shorting, Sections 2
 Silver plated Brass ___
 Silver alloy X

Wafer material: Phenolic X Other ___
 Finish: Comm. ___ 50hr. X SALT SPRAY
 Opr. temp.: 0°C TO 80°C
 Wafer Type F OR EQUIV.

Electrical Specs.

Current rating: Carry 5 amps resistive max.
 Break @ 24 volts 2.5 amp resistive max.
 Break @ 115 volts: .5 amp resistive max.
 Dielectric Strength: 1000v clip to clip, 500v insulated clips back to back.

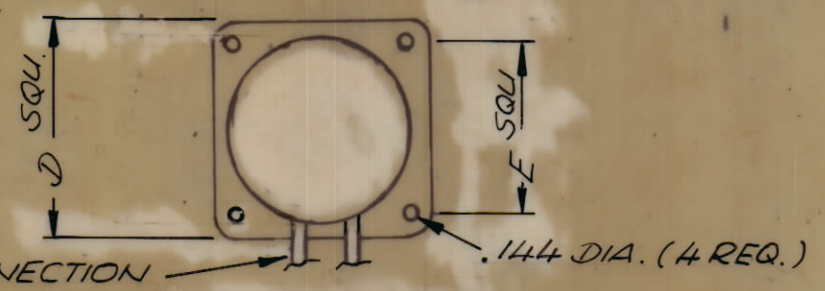
Coil Specifications

Solenoid Size: 3E
 Coil Resistance @ 20° C. 5.04 OHMS
 Voltage: 28 VDC MIN
 Gross Starting Torque @ 20° C:
 Duty Cycle: 1/20
 Rotary Stroke Angle: 35°
 Electric Strength: 1200 VRMS
 Dust Cover: with X w/out ___

NOTES:

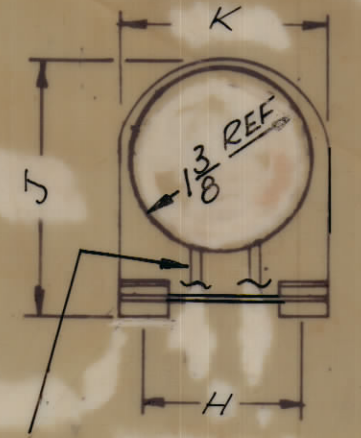
- View wafers from solenoid end of switch.
- Rear side of wafer viewed as if looking through wafers, from solenoid end.
- Orientation of wafer is with Pin 1 in the one o'clock position, as viewed from the solenoid end with solenoid connecting wires or terminals facing down.

FLANGE MOUNTING SECTION "A"

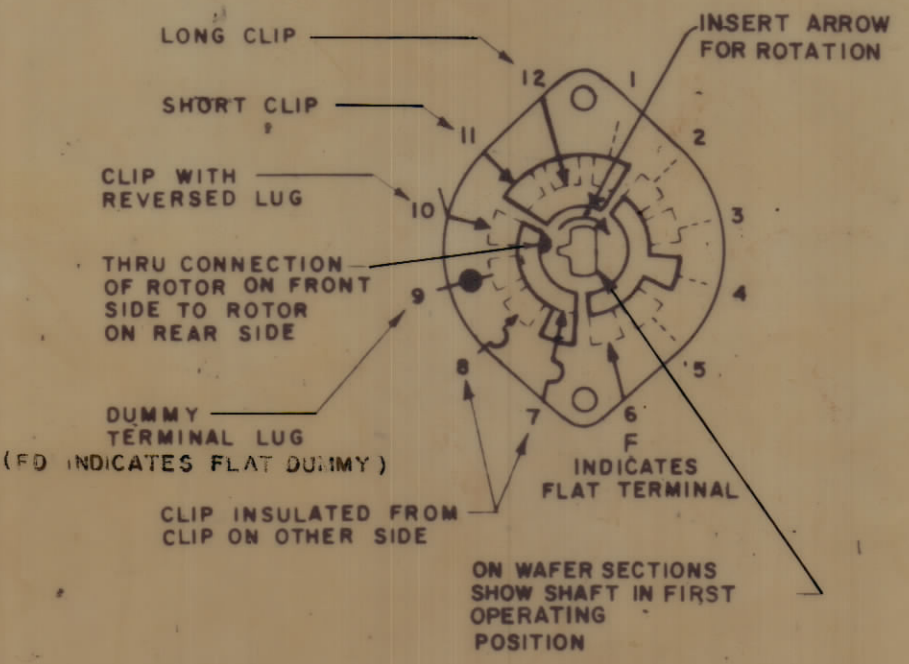
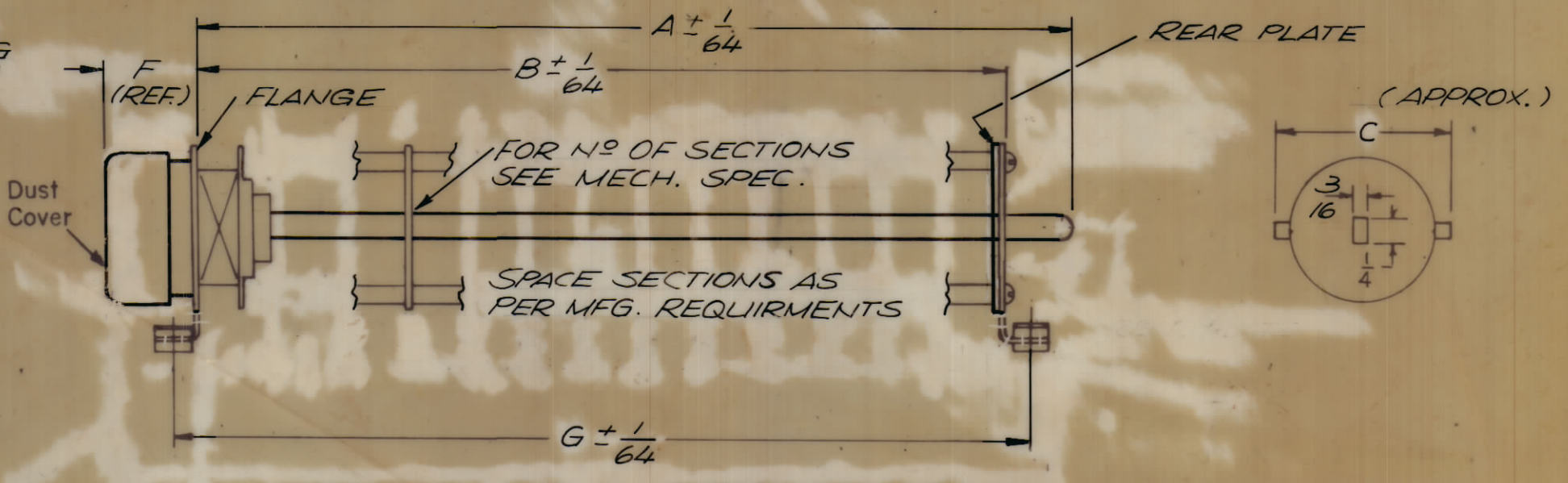


FOR TYPE OF CONNECTION WIRE OR LUG SEE MECH. SPEC.

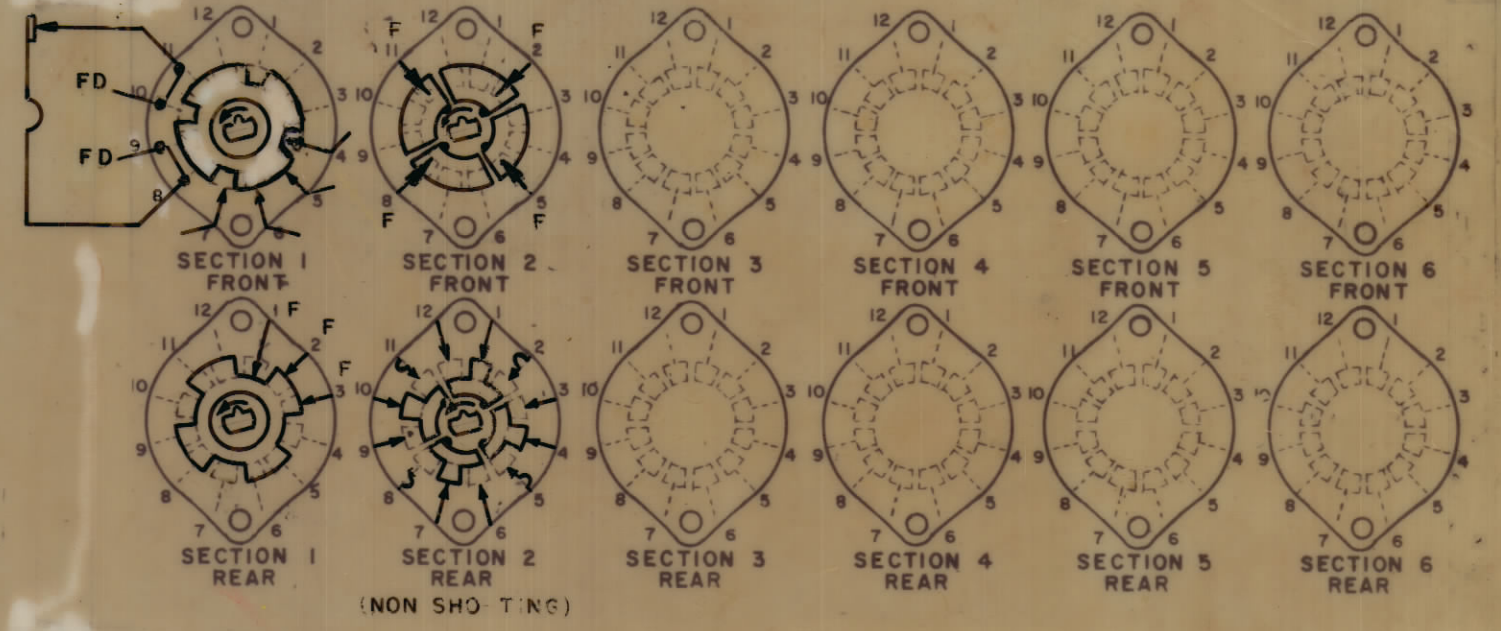
FOOT MOUNTING SECTION "B"



FOR TYPE OF CONNECTION WIRE OR LUG SEE MECH. SPEC.



SYMBOLS USED IN MARKING PRINT



SW 508

STANDARD DRAWING

NOTES

4	MSAR-4	
Q'TY/UNIT	MODEL USED ON	ASSY. NO.
SCALE	CODE	
DO NOT SCALE		

THE CONTENTS OF THIS DRAWING ARE THE EXCLUSIVE PROPERTY OF THE TECHNICAL MATERIEL CORP. ITS UNAUTHORIZED USE OR REPRODUCTION IN WHOLE OR IN PART IS STRICTLY FORBIDDEN.

REQ'D	ITEM	PART NUMBER	DESCRIPTION	SYMBOL
POSE				
LIST OF MATERIAL				
MATERIAL				
THE TECHNICAL MATERIEL CORP. MAMARONECK, NEW YORK				
FINISH				
TITLE SWITCH, ROTARY, SOLENOID, TIME CONST 12 POSITION				
UNLESS OTHERWISE SPECIFIED DIMENSIONS ARE IN INCHES AND INCLUDE CHEMICALLY APPLIED OR PLATED FINISHES		DRAWN <u>[Signature]</u> DATE <u>11/7/68</u>		FINAL APPROV. <u>[Signature]</u> DATE <u>11/7/68</u>
DECIMALS ± .05		FRACTIONS ± 1/64		ELECT. DES. <u>[Signature]</u> DATE <u>11/14/68</u>
XX ± .01		TOLERANCES		MECH. DES. <u>[Signature]</u> DATE <u>11/14/68</u>
XXX ± .005		ANGLES ± 1°		SW 508
				C