

| DESG. | DIMENSION | TOL.   | REMARKS                             |
|-------|-----------|--------|-------------------------------------|
| A     | 1-3/8     |        | Foot mount only                     |
| B     | 13/16     |        | Foot mount only                     |
| C     |           |        | Flange mount only                   |
| D     |           |        | Flange mount only                   |
| E     | 1-3/4     |        | Max. over clips                     |
| F     | 2-5/32    | 1/32   | From rear plate to shaft end        |
| G     | 4-5/16    |        | Total length for foot mount         |
| H     | 3-3/8     | 1/32   | Foot mount only                     |
| J     | 19/32     |        |                                     |
| K     | .707      | REF.   |                                     |
| L     | 19/64     | ± 1/32 | Last wafer to DETENT                |
| M     | 3-11/16   | MAX.   | Total length (to end of rear plate) |
| N     | 1-5/32    |        | Size 3-1 5/32 Size 5-1 9/16         |
| P     | 2.0       | MAX.   | FOOT MOUNT ONLY                     |

Switch Specifications

Mechanical

Rotation of Solenoid (viewed from solenoid end): CW CCW X (LEFT HAND)

No. of sections: 4  
No. of positions: 12  
Angle of throw: 30°

Type Mounting: Flange \_\_\_ Foot X  
Solenoid Connections: Solder lug \_\_\_ Wire X

Contacts:

HOMING NOTCH type, Sections 1  
Non-shortening, Sections 234  
Silver plated Brass \_\_\_  
Silver alloy X

Wafer material: Phenolic X Other \_\_\_  
Finish: Comm. \_\_\_ 50hr. X SALT SPRAY.  
Opr. temp.: 0°C TO 80°C  
Wafer Type F OR EQUIV.  
Electrical Specs.

Current rating: Carry 5 amps resistive max.  
Break @ 24 volts 2.5 amp resistive max.  
Break @ 115 volts .5 amp resistive max.  
Dielectric Strength: 1000v clip to clip, 500v insulated clips back to back.

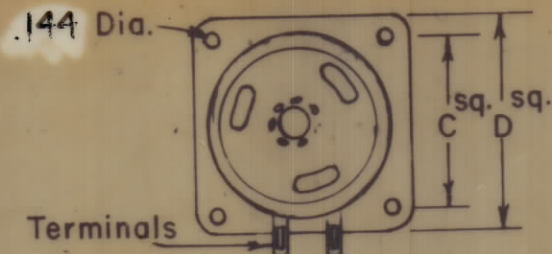
Coil Specifications

Solenoid Size: 3E  
Coil Resistance @ 20° C. 8.02 OHMS  
Voltage: 28 VDC MIN  
Gross Starting Torque @ 20° C:  
Duty Cycle: 1/10  
Rotary Stroke Angle: 35°  
Electric Strength: 1200 VRMS  
Dust Cover: with X w/out \_\_\_

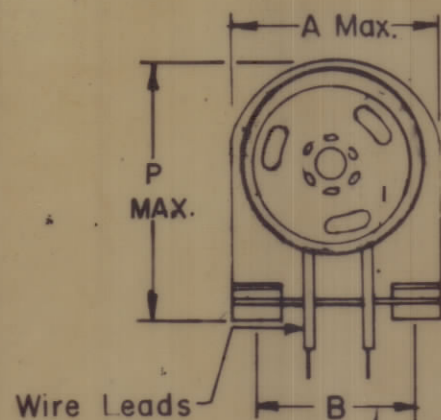
NOTES:

- View wafers from solenoid end of switch.
- Rear side of wafer viewed as if looking through wafers, from solenoid end.
- Orientation of wafer is with Pin 1, in the one o'clock position, as viewed from the solenoid end with solenoid connecting wires or terminals facing down.
- Shall be provided with heavy duty overthrow latch and mechanism.

| REVISIONS |     |   |          |         |       |           |
|-----------|-----|---|----------|---------|-------|-----------|
| ZONE      | SYM | DESCRIPTION                             | DATE     | EMN NO. | DRAFT | CHKD APPD |
|           | X   | EXP. RELEASE                            | 11/7/68  |         | KL    |           |
|           |     | ORIGINAL RELEASE FOR PRODUCTION         | 11-15-68 |         | RG    |           |
|           | A   | COMPLETELY REVISED                      | 2-4-69   | 19287   | GE    |           |
|           | B   | REV. & UPDATED                          | 11/3/69  | 19625   | KL    |           |
|           | C   | FINISH WAS 100hr. SALT SPRAY, FD DELETE | 2-23-70  | 19754   | KD    |           |

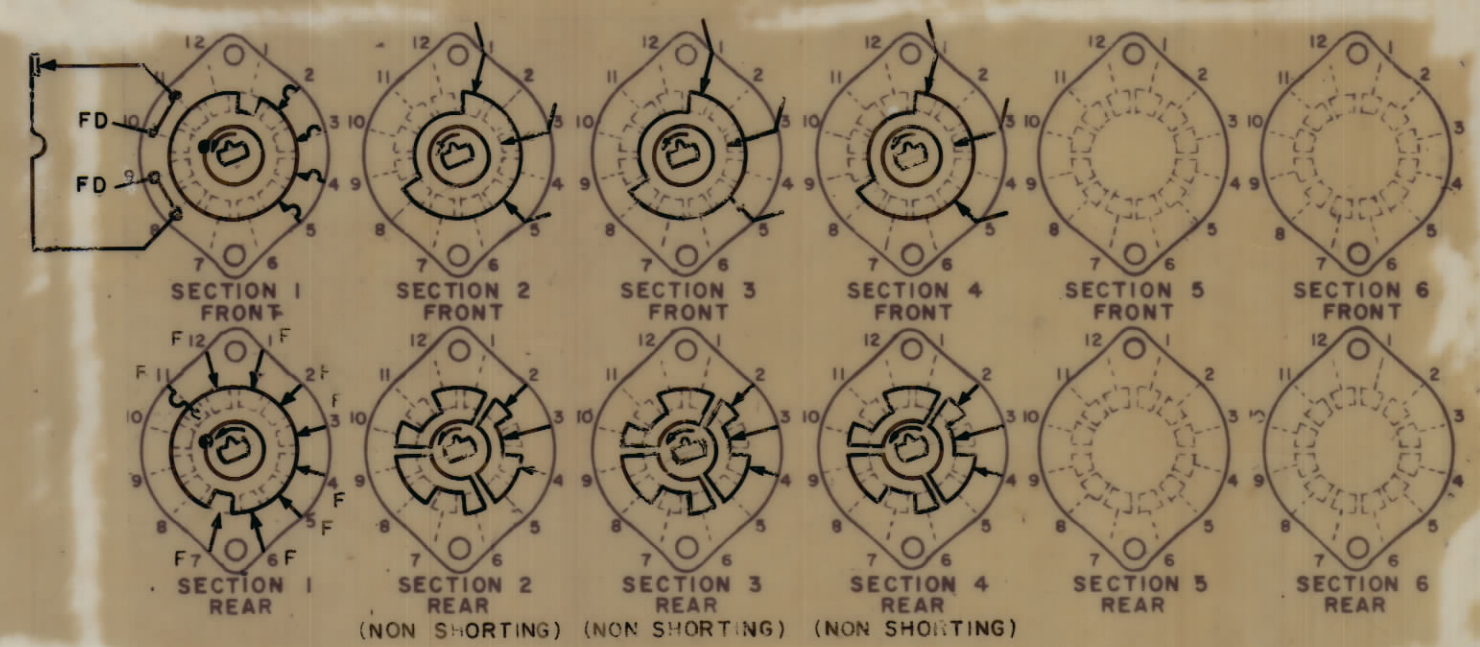
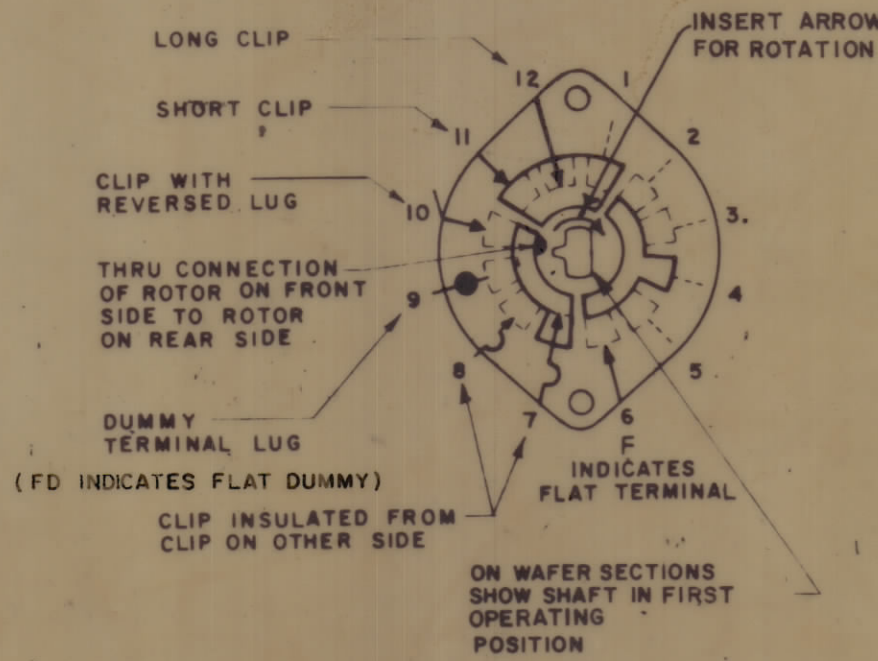
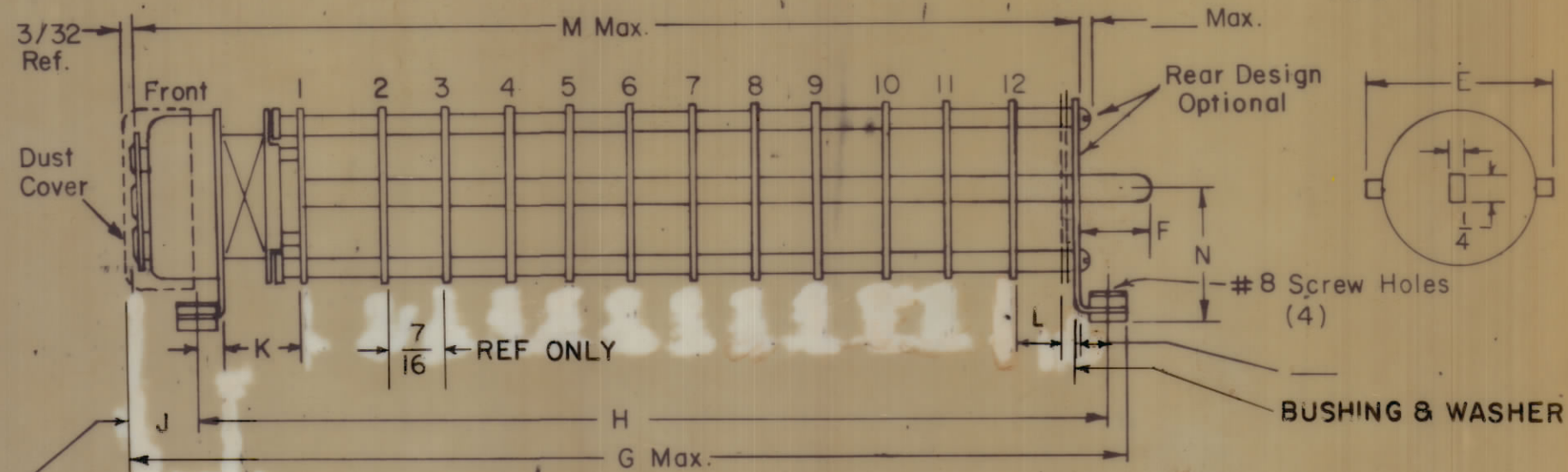


Flange Mount (REF)



Foot Mount (REF)

Sol. Size 3-19/32 Max.  
Sol. Size 5-15/16 Max.



SYMBOLS USED IN MARKING PRINT

STANDARD DRAWING

NOTES

|   |               |           |
|---|---------------|-----------|
| 6   | HFSR-4        |           |
| QTY/UNIT  | MODEL USED ON | ASSY. NO. |
| SCALE   | CODE          |           |
| Do NOT SCALE  |               |           |
| THE CONTENTS OF THIS DRAWING ARE THE EXCLUSIVE PROPERTY OF THE TECHNICAL MATERIEL CORP. ITS UNAUTHORIZED USE OR REPRODUCTION IN WHOLE OR IN PART IS STRICTLY FORBIDDEN. |               |           |

| REQ'D            | ITEM | PART NUMBER   | DESCRIPTION | SYMBOL |
|------------------|------|---|-------------|--------|
| <b>POSE</b>      |      |   |             |        |
| LIST OF MATERIAL |      |   |             |        |
| MATERIAL         |      | THE TECHNICAL MATERIEL CORP.<br>MAMARONECK, NEW YORK        |             |        |
| FINISH           |      | TITLE SWITCH, ROTARY, SOLENOID<br>SELECT, FREQ, 12 POSITION |             |        |
| DRAWN            | DATE | FINAL APPROVAL  | DATE        |        |
| CHECKED          | DATE |   |             |        |
| ELECT. DES.      | DATE |   |             |        |
| MECH. DES.       | DATE |   |             |        |
| DECIMALS         |      | FRACTIONS   |             |        |
| .1 ± .05         |      | ± 1/64  |             |        |
| .XX ± .01        |      | ANGLES  |             |        |
| .XXX ± .008      |      | ± 1°  |             |        |
| TOLERANCES       |      | ANGLES  |             |        |
|                  |      | ± 1°  |             |        |

SW 507  
C