

DESG.	DIMENSION	TOL.	REMARK
A	1/16	±.015	SHAFT LG. FROM MTG. SURFACE
B	3/8	±.005	BUSH. LG.
C	—	±.015	FLAT LG. (IF REQ.)
D	—	±2°	FLAT ANGLE (IF REQ.)
E	—	±.002	FLAT (IF REQUIRED)
F	17/32	±.010	KEY LOCATION (IF REQ.)
G	180°		KEY LOCATION (IF REQ.)
M	5/32	±.010	
N	0.213	±.093	REAR SCR. EXT.
Q	1.978	±.031	REAR SHAFT EXT.
R	3/8		1st SEC. SPACING

TMC PART NUMBER: SW-473 STAMP ON FRONT PLATE  
 FRONT PLATE SHAPE: ROUND X OR OBLONG

MECHANICAL SPECIFICATIONS:  
 NUMBER OF SECTIONS- 1  
 NUMBER OF POSITIONS- CONT.  
 ANGLE OF THROW- 30°

CONTACTS:  
 SHORTING TYPE, SECTIONS \_\_\_\_\_  
 NON SHORTING TYPE, SECTIONS 1  
 SILVER PLATED BRASS, SECTIONS 1  
 SILVER ALLOY, SECTIONS \_\_\_\_\_

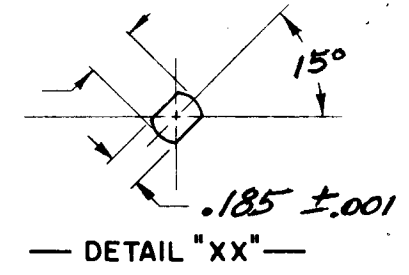
WAFERS:  
 BAKELITE, SECTIONS 1  
 CERAMIC, SECTIONS \_\_\_\_\_  
 MYCALEX, SECTIONS \_\_\_\_\_  
 IMPREGNATION (IF REQ.) \_\_\_\_\_

FINISH REQUIREMENTS:  
 ARMY \_\_\_\_\_ NAVY \_\_\_\_\_ COMMERCIAL X  
 SALT TEST (IF REQ.) \_\_\_\_\_

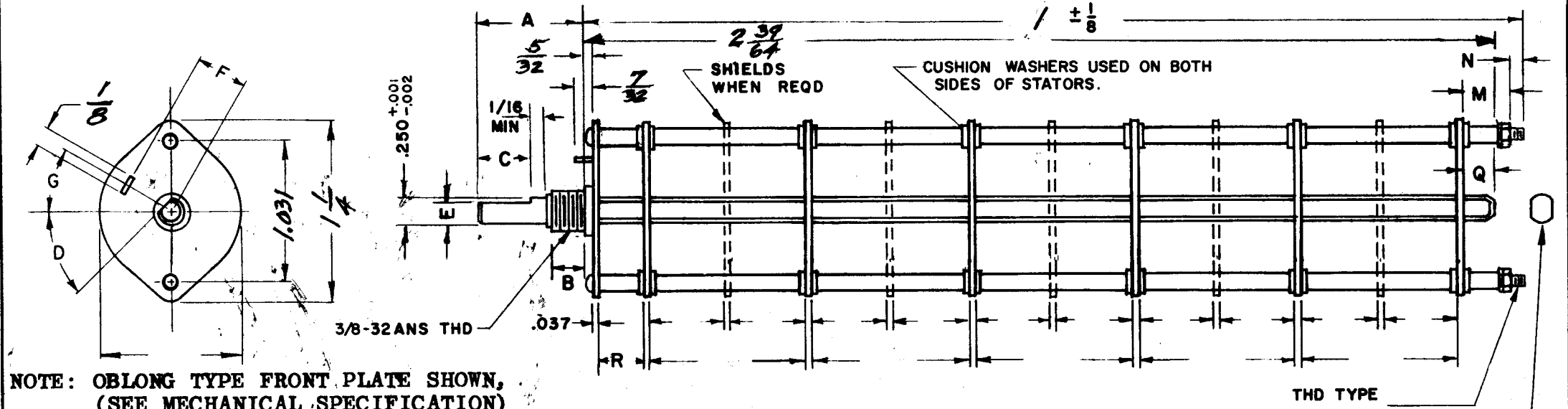
HARDWARE, TO BE SUPPLIED BY MANUFACTURER:  
1 QUAN. 3/8 -32 NUTS 1/2 ACROSS FLATS  
 MATERIAL STEEL PLATING CADMIUM  
1 QUAN. 3/8 INTERNAL TOOTH LOCKWASHER  
 MATERIAL STEEL PLATING CADMIUM

ELECTRICAL SPECIFICATIONS:  
 MAXIMUM RATED VOLTAGE \_\_\_\_\_  
 MAXIMUM RATED CURRENT \_\_\_\_\_

NOTE:  
 FOR S401-13 ("F" TYPE) SWITCHES, THE SHAFT POSITION MUST BE SPECIFIED ON DETAIL "XX" BELOW.

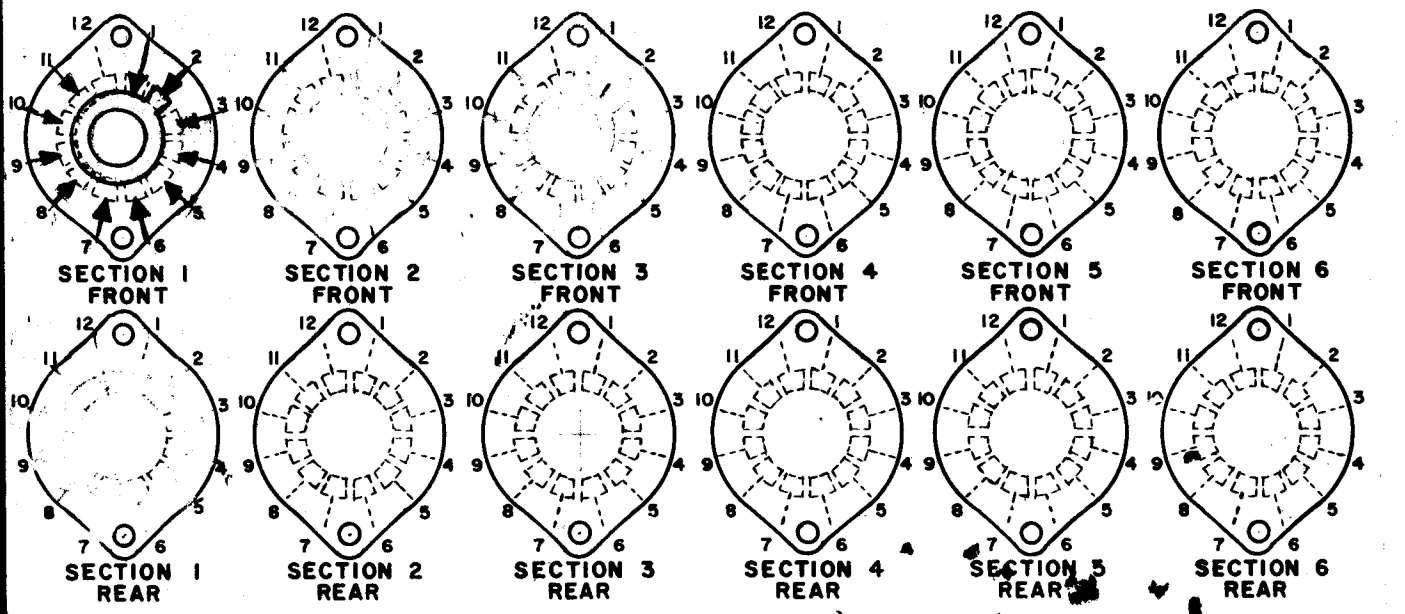
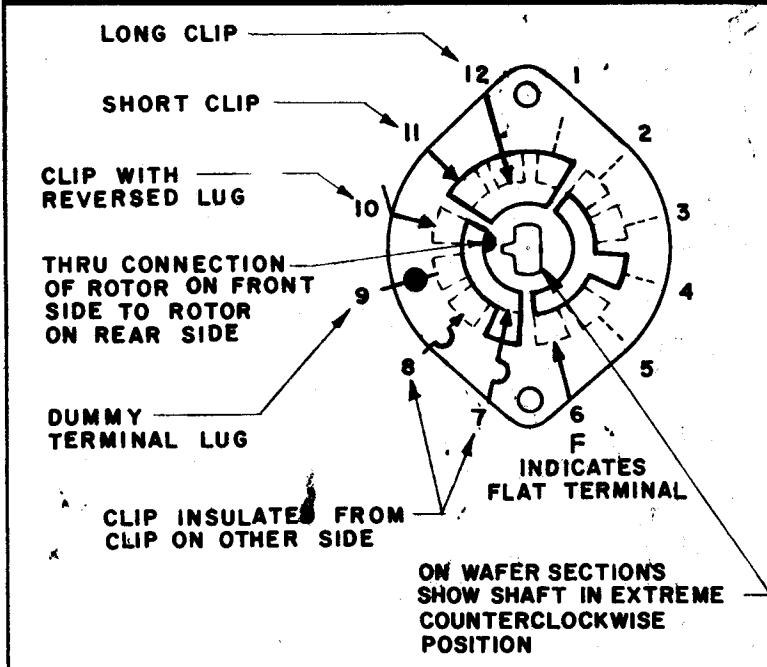


NOTES



NOTE: OBLONG TYPE FRONT PLATE SHOWN, (SEE MECHANICAL SPECIFICATION)

FRONT AND REAR SECTIONS VIEWED FROM FRONT OR KNOB END OF SWITCH IN EXTREME COUNTERCLOCKWISE POSITION. SEE NOTE (DET. "XX")



SYMBOLS USED IN MARKING PRINT

1	SME-G	
Q'TY./UNIT	MODEL USED ON	ASS'Y. NO.
SCALE	CODE	

THE CONTENTS OF THIS DRAWING ARE THE EXCLUSIVE PROPERTY OF THE TECHNICAL MATERIEL CORP. ITS UNAUTHORIZED USE OR REPRODUCTION IN WHOLE OR IN PART IS STRICTLY FORBIDDEN.

REVISIONS						
SYM	DESCRIPTION	DATE	E.M.N. NO.	DRAFT	CHKD	APPD
Ø	ORIGINAL RELEASE FOR PRODUCTION	4-24-68		R.G.		
A	REV. & UPDATED	8-2-68	19010	HS. Jillo		

MATERIAL		THE TECHNICAL MATERIEL CORP. MAMARONECK, NEW YORK			
FINISH		TITLE CHANNEL SWITCH			
UNLESS OTHERWISE SPECIFIED DIMENSIONS ARE IN INCHES AND INCLUDE CHEMICALLY APPLIED OR PLATED FINISHES		DRAWN	DATE	FINAL APPROVAL	DATE
		J. ANGER	12/28/67	[Signature]	
		CHECKED	DATE		
		[Signature]	1/1/68		
DECIMALS .X ± .05 .XX ± .01 .XXX ± .005		FRACTIONS ± 1/64 ANGLES ± 0° 30'		ELECT. DES. DATE	
TOLERANCES		J. ANGER		DATE 12/28/67	
		MECH. DES.		SHEET	
		J. ANGER		SW 473	
		DATE 12/28/67		REV. LTR.	
				A	