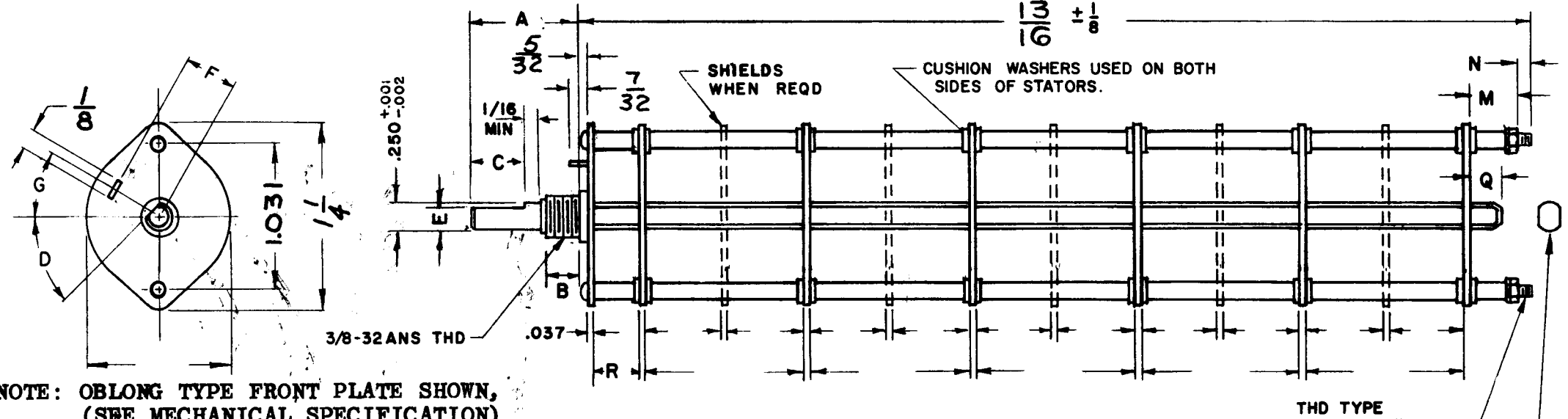


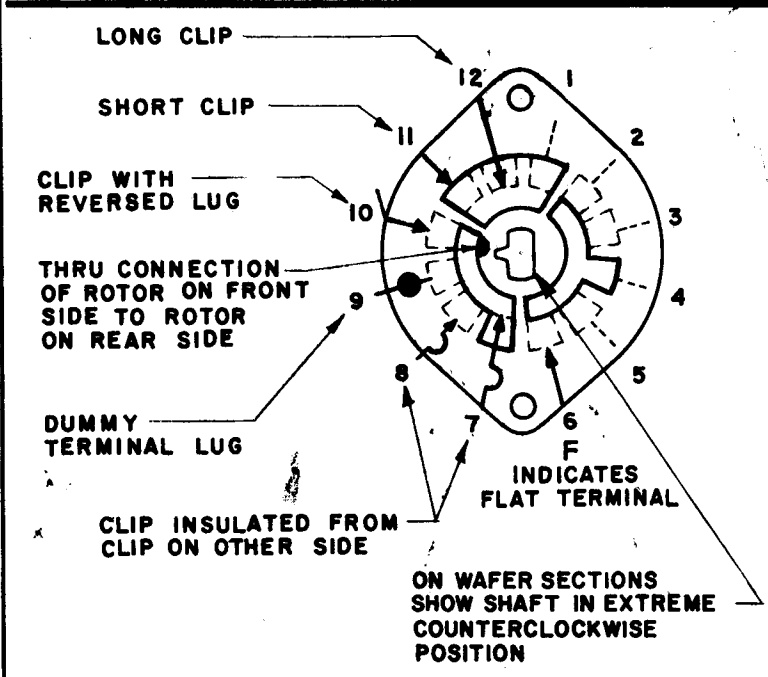
DESG.	DIMENSION	TOL.	REMARK
A	10 15/16	±.015	SHAFT LG. FROM MTG. SURFACE
B	1/4	±.005	BUSH. LG.
C		±.015	FLAT LG. (IF REQ.)
D		±2°	FLAT ANGLE (IF REQ.)
E		±.002	FLAT (IF REQUIRED)
F	17/32	±.010	KEY LOCATION (IF REQ.)
G	0°		KEY LOCATION (IF REQ.)
M	5/32	±.010	
N	1/8	±.093	REAR SCR. EXT.
Q	1/4	±.031	REAR SHAFT EXT.
R	9/32		1st SEC. SPACING

REVISIONS						
ZONE	LTR	DESCRIPTION	DATE	E.M.N.NO	DRAFT	CHKD APPD
	X	EXP. RELEASE	3-8-68			J.H. [Signature]
	Ø	ORIG. RELEASE FOR PROD	3-15-68	Ø		R.G. [Signature]

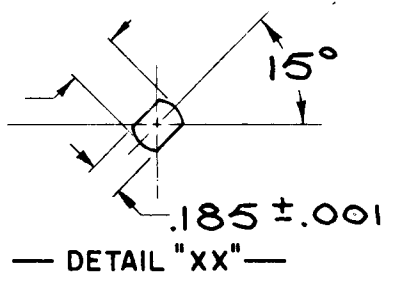
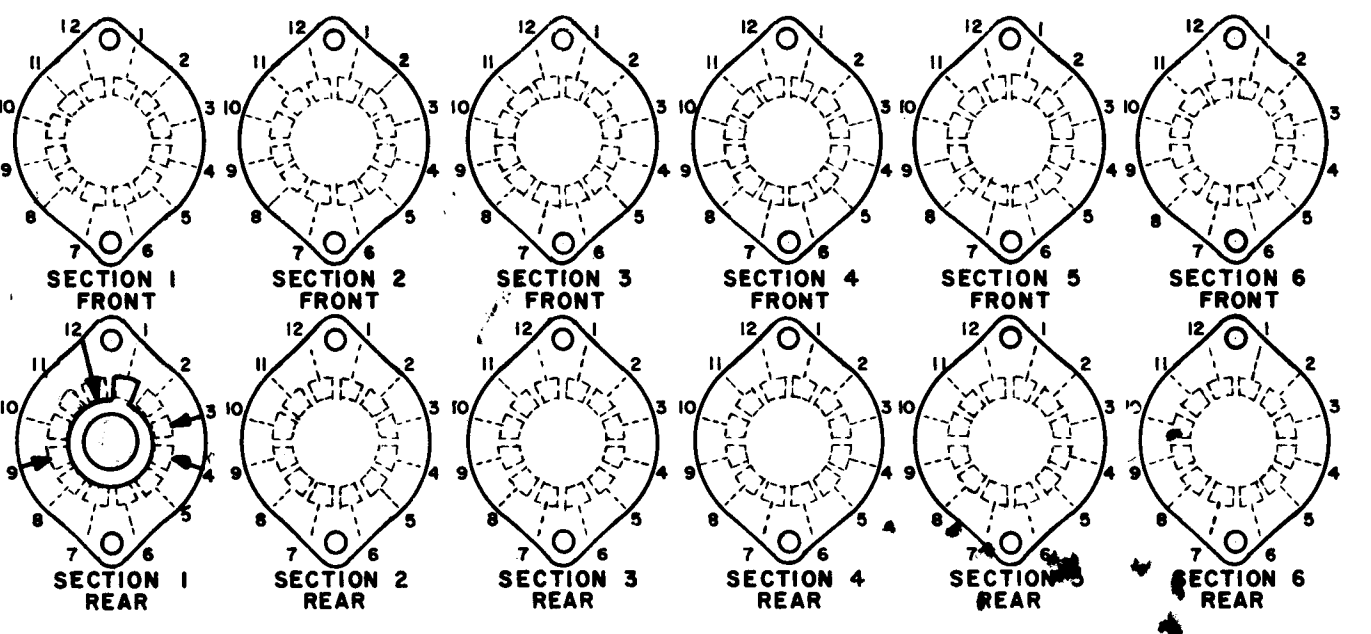
TMC PART NUMBER: SW-470 STAMP ON FRONT PLATE  
FRONT PLATE SHAPE: ROUND X OR OBLONG  
MECHANICAL SPECIFICATIONS:  
NUMBER OF SECTIONS- 1  
NUMBER OF POSITIONS- CONTINUOUS  
ANGLE OF THROW- 30°  
CONTACTS:  
SHORTING TYPE, SECTIONS \_\_\_\_\_  
NON SHORTING TYPE, SECTIONS 1  
SILVER PLATED BRASS, SECTIONS \_\_\_\_\_  
SILVER ALLOY, SECTIONS \_\_\_\_\_  
WAFERS:  
BAKELITE, SECTIONS 1  
CERAMIC, SECTIONS \_\_\_\_\_  
MYCALEX, SECTIONS \_\_\_\_\_  
IMPREGNATION (IF REQ.) \_\_\_\_\_  
FINISH REQUIREMENTS:  
ARMY NAVY COMMERCIAL X  
SALT TEST (IF REQ.) \_\_\_\_\_  
HARDWARE, TO BE SUPPLIED BY MANUFACTURER:  
1 QUAN. 3/8 -32 NUTS 1/2 ACROSS FLATS  
MATERIAL STEEL PLATING CADMIUM  
1 QUAN. 3/8 INTERNAL TOOTH LOCKWASHER  
MATERIAL STEEL PLATING CADMIUM  
ELECTRICAL SPECIFICATIONS:  
MAXIMUM RATED VOLTAGE 110 VAC  
MAXIMUM RATED CURRENT 1.0 AMP BREAK  
5.0 AMP CARRY  
NOTE:  
FOR S401-13 ("F" TYPE) SWITCHES, THE SHAFT POSITION MUST BE SPECIFIED ON DETAIL "XX" BELOW.



NOTE: OBLONG TYPE FRONT PLATE SHOWN, (SEE MECHANICAL SPECIFICATION)



FRONT AND REAR SECTIONS VIEWED FROM FRONT OR KNOB END OF SWITCH IN EXTREME COUNTERCLOCKWISE POSITION. SEE NOTE (DET. "XX")



NOTES

SYMBOLS USED IN MARKING PRINT

1	MMX-1-M	
QTY / UNIT	MODEL USED ON	ASS'Y NO.
APPLICATION		
	CODE	

NOTICE TO PERSONS RECEIVING THIS DRAWING  
THE TECHNICAL MATERIEL CORPORATION claims proprietary right in the material disclosed hereon. This drawing is issued in confidence for engineering information only and may not be reproduced or used to manufacture anything shown hereon without permission from THE TECHNICAL MATERIEL CORPORATION to the user. This drawing is loaned for mutual assistance and is subject to recall at any time.

UNLESS OTHERWISE SPECIFIED DIMENSIONS ARE IN INCHES AND INCLUDE CHEMICALLY APPLIED OR PLATED FINISHES	FINAL APPROVAL [Signature]	DATE 3-14-68
DECIMALS .X ± .05 .XX ± .01 .XXX ± .005	MECH. DES. [Signature]	DATE 3-15-68
FRACTIONS 1/64 ANGLES 0°-30'	ELECT. DES. [Signature]	DATE 3-15-68
MATERIAL	CHECKED [Signature]	DATE 3-15-68
FINISH	DRAWN [Signature]	DATE 3-8-68

THE TECHNICAL MATERIEL CORP. MAMARONECK, NEW YORK			
SWITCH, ROTARY 1 KHz (ADDITIONAL)			
SIZE B	CODE IDENT. NO. 82679	DWG NO. SW470	ISSUE Ø
SCALE	SHEET		OF