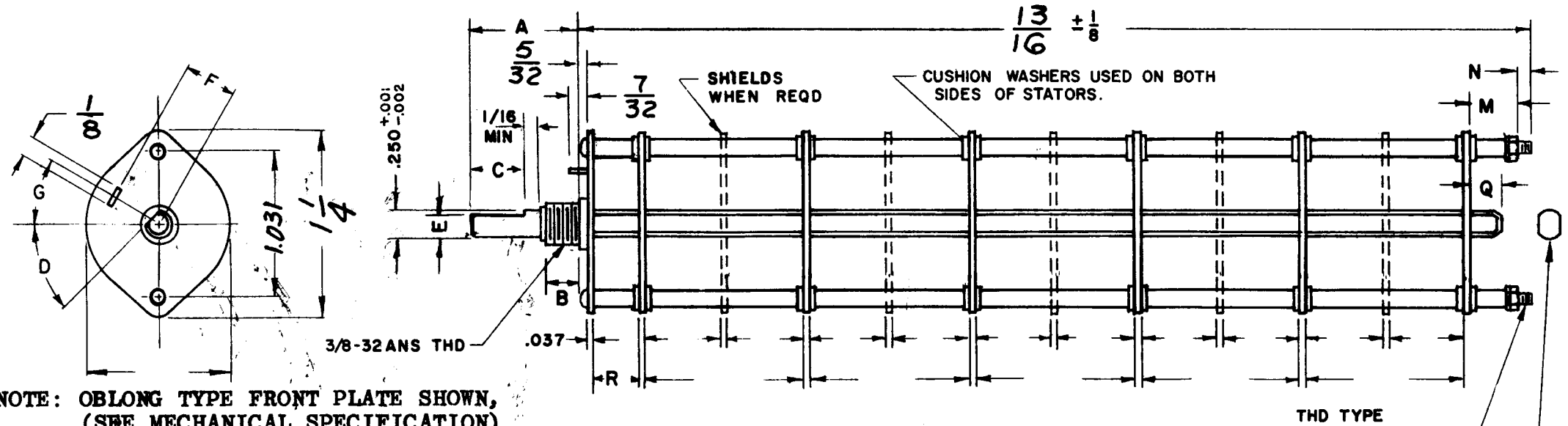


DESG.	DIMENSION	TOL.	REMARK
A	10 5/16	±.015	SHAFT LG. FROM MTG. SURFACE
B	1/4	±.005	BUSH. LG.
C	—	±.015	FLAT LG. (IF REQ.)
D	—	±2°	FLAT ANGLE (IF REQ.)
E	—	±.002	FLAT (IF REQUIRED)
F	17/32	±.010	KEY LOCATION (IF REQ.)
G	0°		KEY LOCATION (IF REQ.)
M	5/32	±.010	
N	1/8	±.093	REAR SCR. EXT.
Q	1/4	±.031	REAR SHAFT EXT.
R	9/32		1st SEC. SPACING

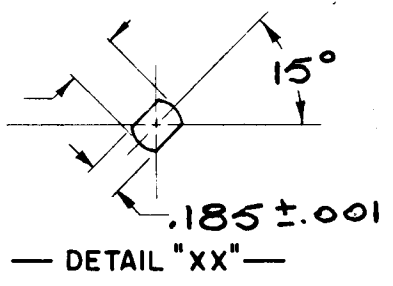
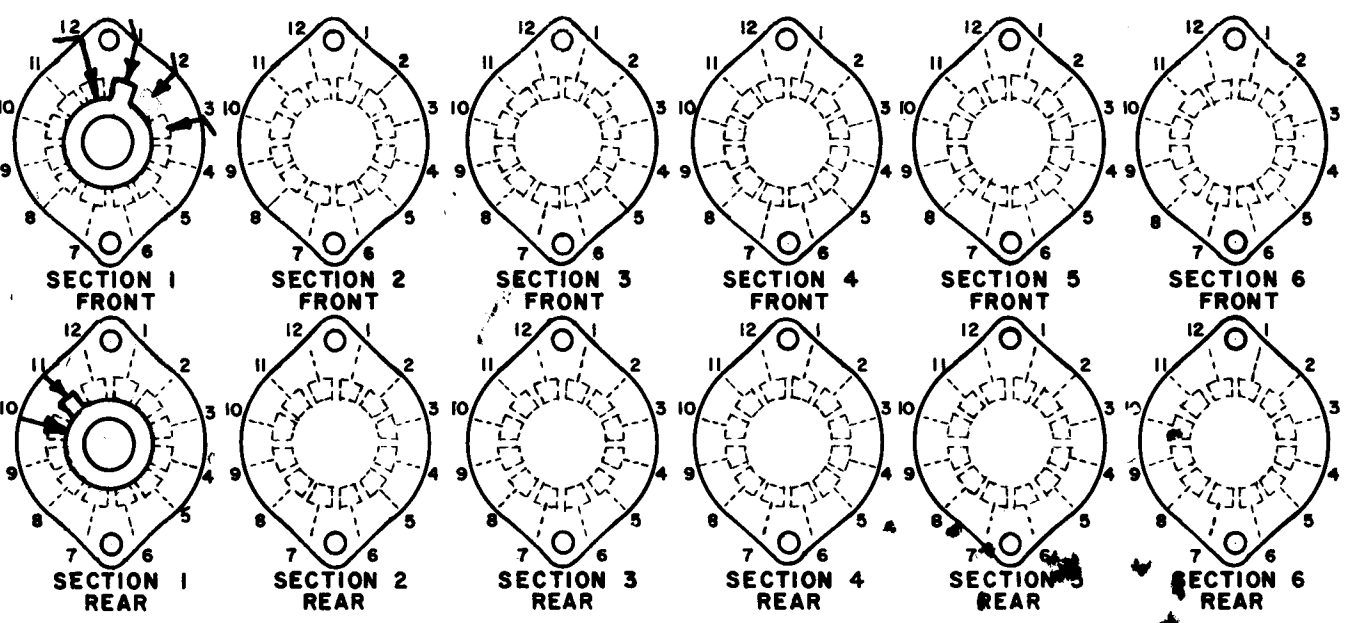
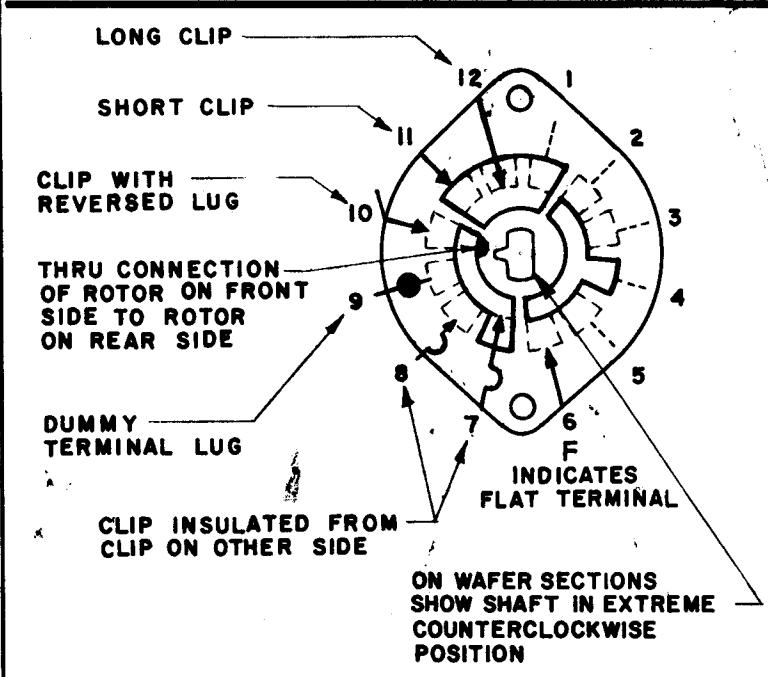
REVISIONS						
ZONE	LTR	DESCRIPTION	DATE	E.M.N.NO	DRAFT	CHKD APPD
	X	EXP. RELEASE	3-8-68			
	Ø	ORIG. RELEASE FOR PROD	3.15.68	Ø	R.G.	

TMC PART NUMBER: SW-469 STAMP ON FRONT PLATE  
FRONT PLATE SHAPE: ROUND X OR OBLONG  
MECHANICAL SPECIFICATIONS:  
NUMBER OF SECTIONS- 1  
NUMBER OF POSITIONS- CONTINUOUS  
ANGLE OF THROW- 30°  
CONTACTS:  
SHORTING TYPE, SECTIONS \_\_\_\_\_  
NON SHORTING TYPE, SECTIONS \_\_\_\_\_  
SILVER PLATED BRASS, SECTIONS 1  
SILVER ALLOY, SECTIONS \_\_\_\_\_  
WAFERS:  
BAKELITE, SECTIONS 1  
CERAMIC, SECTIONS \_\_\_\_\_  
MYCALEX, SECTIONS \_\_\_\_\_  
IMPREGNATION (IF REQ.) \_\_\_\_\_  
FINISH REQUIREMENTS:  
ARMY NAVY COMMERCIAL X  
SALT TEST (IF REQ.) \_\_\_\_\_  
HARDWARE, TO BE SUPPLIED BY MANUFACTURER:  
1 QUAN. 3/8-32 NUTS 1/2 ACROSS FLATS  
MATERIAL STEEL PLATING CADMIUM  
1 QUAN. 3/8 INTERNAL TOOTH LOCKWASHER  
MATERIAL STEEL PLATING CADMIUM  
ELECTRICAL SPECIFICATIONS:  
MAXIMUM RATED VOLTAGE 110 V AC  
MAXIMUM RATED CURRENT 1.0 AMPS BREAK  
5.0 AMPS CARRY  
NOTE:  
FOR S401-13 ("F" TYPE) SWITCHES, THE SHAFT POSITION MUST BE SPECIFIED ON DETAIL "XX" BELOW.



NOTE: OBLONG TYPE FRONT PLATE SHOWN, (SEE MECHANICAL SPECIFICATION)

FRONT AND REAR SECTIONS VIEWED FROM FRONT OR KNOB END OF SWITCH IN EXTREME COUNTERCLOCKWISE POSITION.



SYMBOLS USED IN MARKING PRINT

SWITCH, ROTARY - 12 POINT TYPE "F"

1	MMX-1-M	
QTY / UNIT	MODEL USED ON	ASS'Y NO.
APPLICATION		
	CODE	

UNLESS OTHERWISE SPECIFIED DIMENSIONS ARE IN INCHES AND INCLUDE CHEMICALLY APPLIED OR PLATED FINISHES	FINAL APPROVAL	DATE
DECIMALS .X ± .05 .XX ± .01 .XXX ± .005	MECH. DES.	DATE
FRACTIONS 1/64	ELECT. DES.	DATE
TOLS. ANGLES 0°-30'	CHECKED	DATE
MATERIAL	DRAWN	DATE
FINISH		

THE TECHNICAL MATERIEL CORP.  
MAMARONECK, NEW YORK

SWITCH, ROTARY, 10 MHz (ADDITIONAL)

NOTICE TO PERSONS RECEIVING THIS DRAWING  
THE TECHNICAL MATERIEL CORPORATION claims proprietary right in the material disclosed hereon. This drawing is issued in confidence for engineering information only and may not be reproduced or used to manufacture anything shown hereon without permission from THE TECHNICAL MATERIEL CORPORATION to the user. This drawing is loaned for mutual assistance and is subject to recall at any time.

SIZE	CODE IDENT. NO.	DWG NO.	ISSUE
B	82679	SW469	Ø
SCALE		SHEET	OF

NOTES