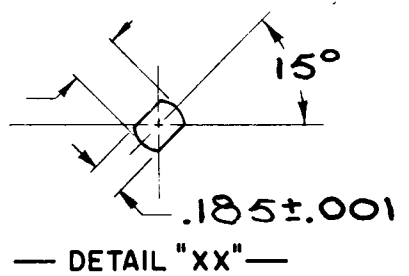


DESG.	DIMENSION	TOL.	REMARK
A	10 15/16	±.015	SHAFT LG. FROM MTG. SURFACE
B	1/4	±.005	BUSH. LG.
C	—	±.015	FLAT LG. (IF REQ.)
D	—	±2°	FLAT ANGLE (IF REQ.)
E	—	±.002	FLAT (IF REQUIRED)
F	17/32	±.010	KEY LOCATION (IF REQ.)
G	0°		KEY LOCATION (IF REQ.)
M	5/32	±.010	
N	1/8	±.093	REAR SCR. EXT.
Q	1/4	±.031	REAR SHAFT EXT.
R	9/32		1st SEC. SPACING

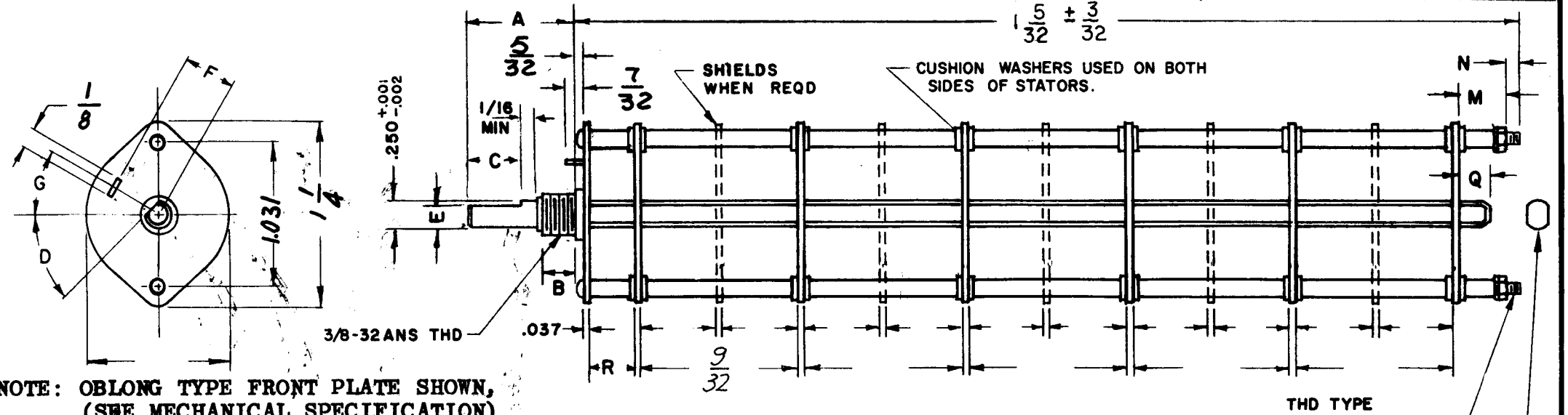
TMC PART NUMBER: SW-467 STAMP ON FRONT PLATE
FRONT PLATE SHAPE: ROUND X OR OBLONG
MECHANICAL SPECIFICATIONS:
NUMBER OF SECTIONS- 2
NUMBER OF POSITIONS- CONTINUOUS
ANGLE OF THROW- 30°
CONTACTS:
SHORTING TYPE, SECTIONS _____
NON SHORTING TYPE, SECTIONS 2
SILVER PLATED BRASS, SECTIONS 2
SILVER ALLOY, SECTIONS _____
WAFERS:
BAKELITE, SECTIONS 2
CERAMIC, SECTIONS _____
MYCALEX, SECTIONS _____
IMPREGNATION (IF REQ.) _____
FINISH REQUIREMENTS:
ARMY NAVY COMMERCIAL X
SALT TEST (IF REQ.) _____
HARDWARE, TO BE SUPPLIED BY MANUFACTURER:
1 QUAN. 3/8 -32 NUTS 1/2 ACROSS FLATS
MATERIAL STEEL PLATING CADMIUM
1 QUAN. 3/8 INTERNAL TOOTH LOCKWASHER
MATERIAL STEEL PLATING CADMIUM
ELECTRICAL SPECIFICATIONS:
MAXIMUM RATED VOLTAGE 110 VAC
MAXIMUM RATED CURRENT 1.0 AMP BREAK
5.0 AMP CARRY
NOTE:
FOR S401-13 ("F" TYPE) SWITCHES, THE SHAFT POSITION MUST BE SPECIFIED ON DETAIL "XX" BELOW.



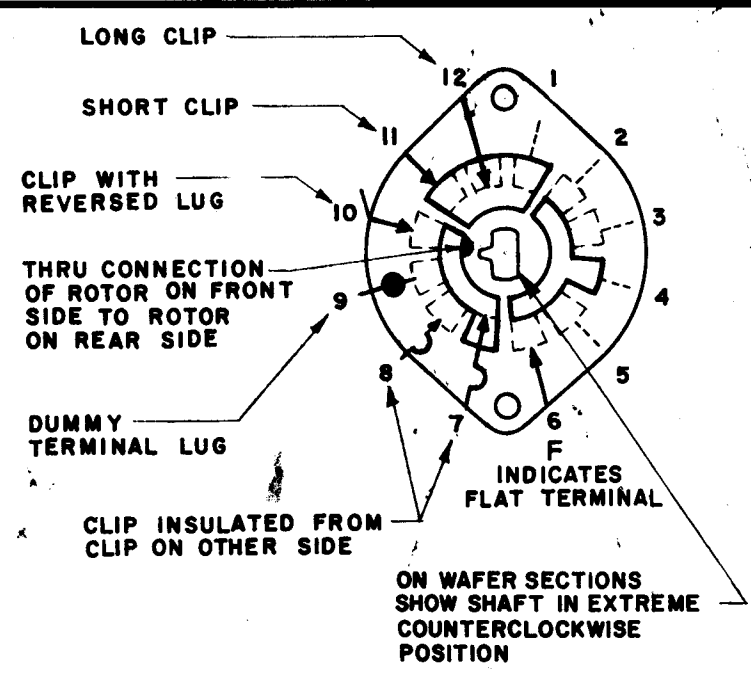
NOTES

B. CHG. SW. LENGTH 7-6-71 20415 RY W. J. B.

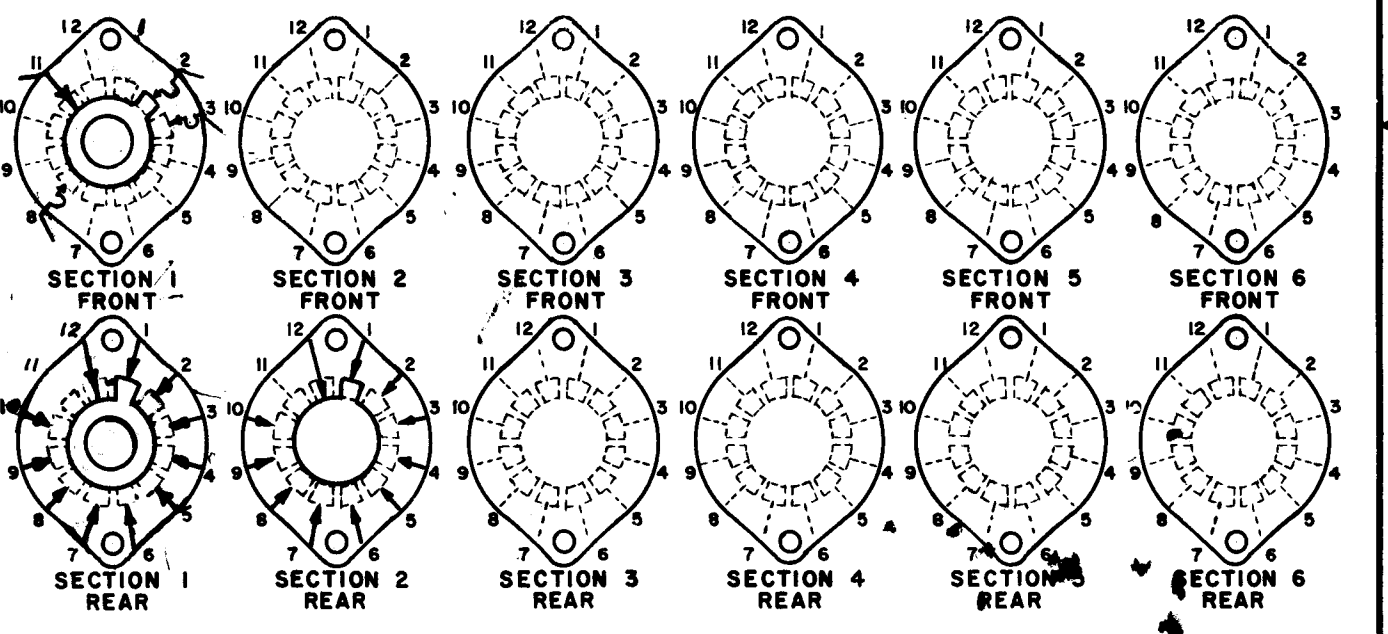
REVISIONS						
ZONE	LTR	DESCRIPTION	DATE	E.M.N.NO	DRAFT	CHKD APPD
	X	EXP. RELEASE	3-8-61		J.W.	
	Ø	ORIG. RELEASE FOR PROD	3-15-68	Ø	R.G.	
	A	REV. SECT. 1 & 2 REAR	5/29/71	20365	GE	



NOTE: OBLONG TYPE FRONT PLATE SHOWN, (SEE MECHANICAL SPECIFICATION)



FRONT AND REAR SECTIONS VIEWED FROM FRONT OR KNOB END OF SWITCH IN EXTREME COUNTERCLOCKWISE POSITION. SEE NOTE (DET. "XX")



SWITCH, ROTARY - 12 POINT TYPE "F"

1	MMXA-2A	KIT 368
1	MMX-1-M	KIT 349
QTY / UNIT	MODEL USED ON	ASS'Y NO.
APPLICATION		
CODE		

NOTICE TO PERSONS RECEIVING THIS DRAWING
THE TECHNICAL MATERIEL CORPORATION claims proprietary right in the material disclosed hereon. This drawing is issued in confidence for engineering information only and may not be reproduced or used to manufacture anything shown hereon without permission from THE TECHNICAL MATERIEL CORPORATION to the user. This drawing is loaned for mutual assistance and is subject to recall at any time.

UNLESS OTHERWISE SPECIFIED DIMENSIONS ARE IN INCHES AND INCLUDE CHEMICALLY APPLIED OR PLATED FINISHES	FINAL APPROVAL DATE 3-15-68
MECH. DES.	DATE 3-15-68
ELECT. DES.	DATE 3-15-68
CHECKED	DATE 3-15-68
DRAWN	DATE 3-8-68
MATERIAL	
FINISH	

THE TECHNICAL MATERIEL CORP. MAMARONECK, NEW YORK			
SWITCH, ROTARY, 100 KHz (ADDITIONAL)			
SIZE	CODE IDENT. NO.	DWG NO.	ISSUE
B	82679	SW467	B
SCALE	SHEET		OF