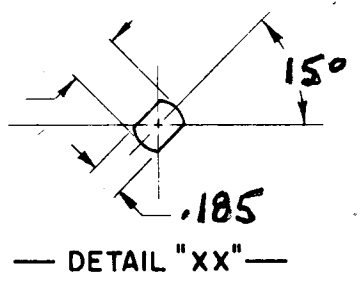
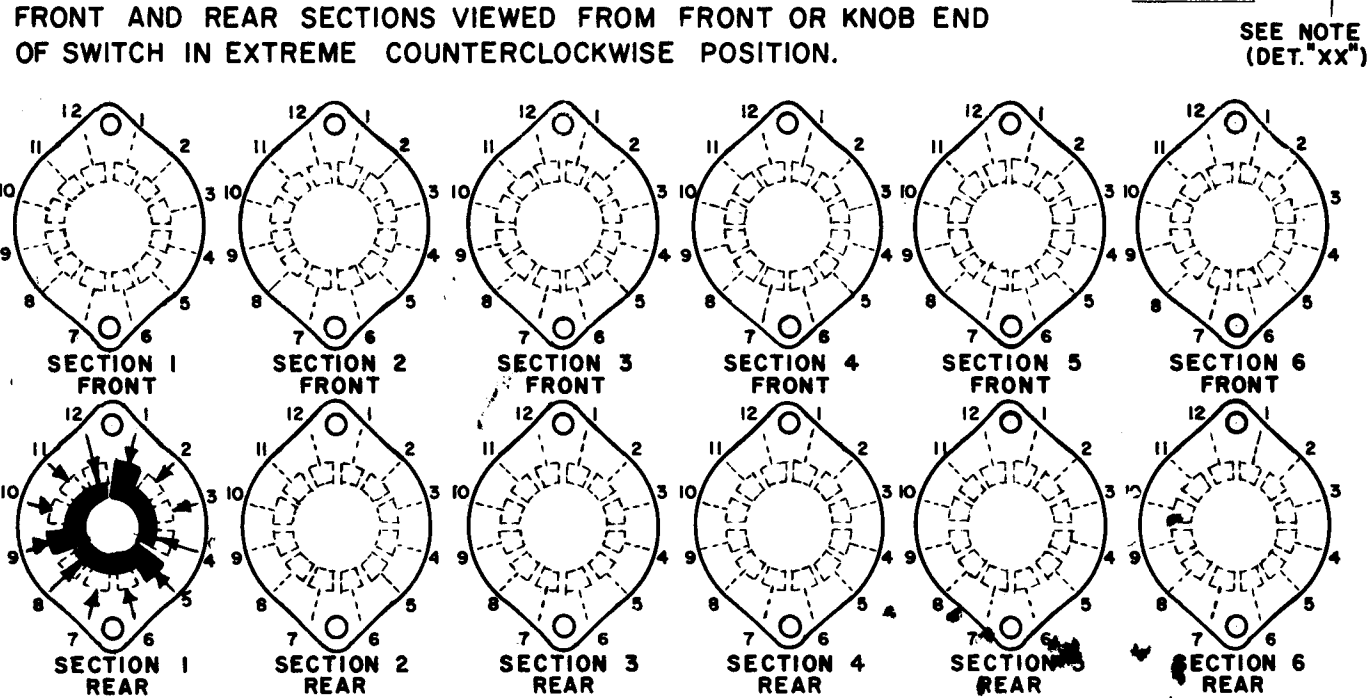
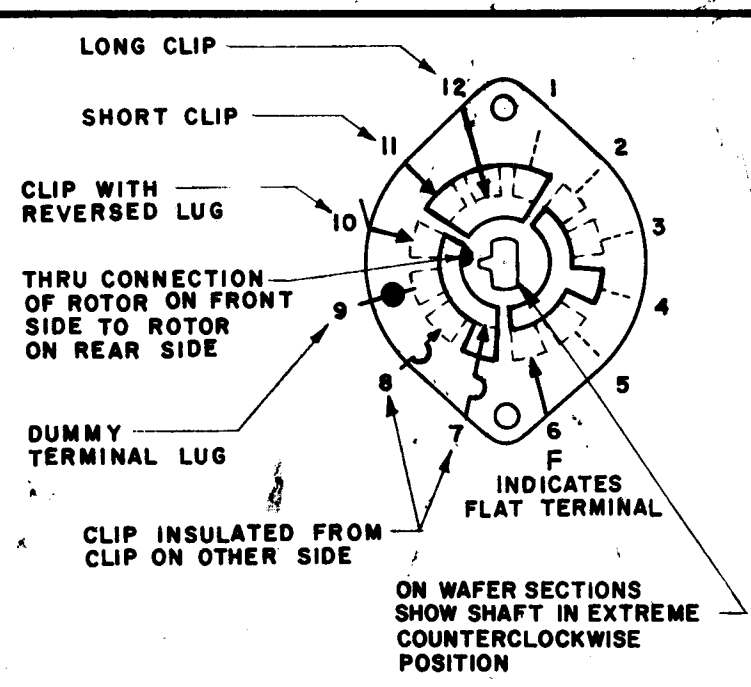
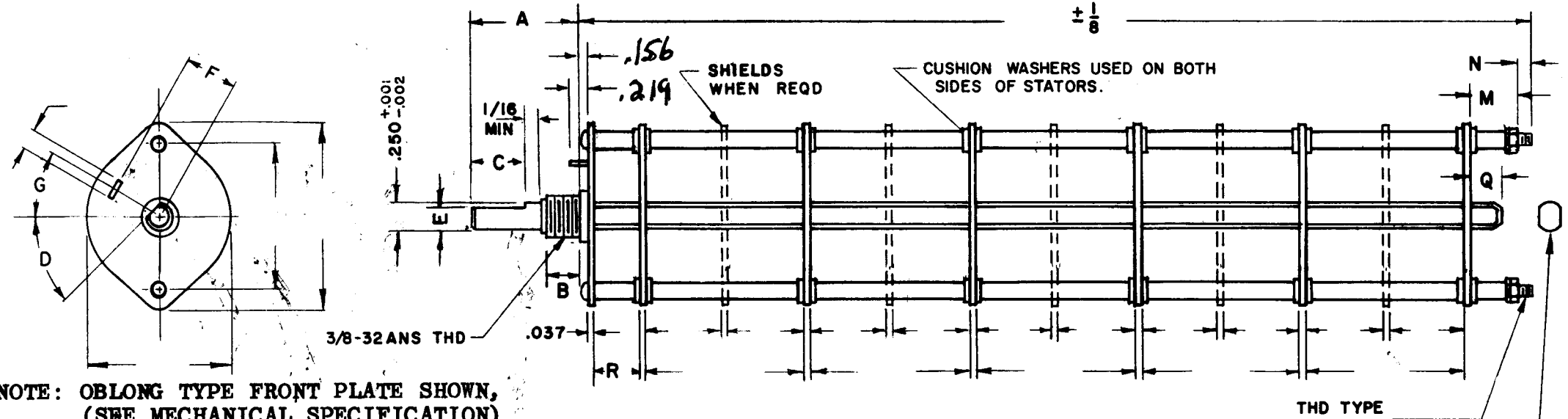


DESG.	DIMENSION	TOL.	REMARK
A	3/4	±.015	SHAFT LG. FROM MTG. SURFACE
B	3/8	±.005	BUSH. LG.
C	#	±.015	FLAT LG. (IF REQ.)
D	#	±2°	FLAT ANGLE (IF REQ.)
E	#	±.002	FLAT (IF REQUIRED)
F	.531	±.010	KEY LOCATION (IF REQ.)
G	100°		KEY LOCATION (IF REQ.)
M	.125	±.010	
N	1/8	±.093	REAR SCR. EXT.
Q	3/16	±.031	REAR SHAFT EXT.
R	.375		1st SEC. SPACING

REVISIONS						
ZONE	LTR	DESCRIPTION	DATE	E.M.N.NO	DRAFT	CHKD APPD
	X	EXPERIMENTAL RELEASE	8/17/67	X	C.V.	
	Ø	ORIG. RELEASE FOR PROD	11-7-68	Ø	R.G.	
	A	CONTACTS WERE ON FRONT SEC	11/11/69	19655	KD	

TMC PART NUMBER: SW-456 STAMP ON FRONT PLATE  
FRONT PLATE SHAPE: ROUND X OR OBLONG  
MECHANICAL SPECIFICATIONS:  
NUMBER OF SECTIONS- 1  
NUMBER OF POSITIONS- 3  
ANGLE OF THROW- 30°  
CONTACTS:  
SHORTING TYPE, SECTIONS \_\_\_\_\_  
NON SHORTING TYPE, SECTIONS 1  
SILVER PLATED BRASS, SECTIONS \_\_\_\_\_  
SILVER ALLOY, SECTIONS 1  
WAFERS:  
BAKELITE, SECTIONS 1  
CERAMIC, SECTIONS \_\_\_\_\_  
MYCALEX, SECTIONS \_\_\_\_\_  
IMPREGNATION (IF REQ.) \_\_\_\_\_  
FINISH REQUIREMENTS:  
ARMY X NAVY X COMMERCIAL \_\_\_\_\_  
SALT TEST (IF REQ.) 200 Hours  
HARDWARE, TO BE SUPPLIED BY MANUFACTURER:  
1 QUAN. 3/8 -32 NUTS ACROSS FLATS  
MATERIAL STAINLESS STEEL PLATING PASSIVATE  
1 QUAN. 3/8 INTERNAL TOOTH LOCKWASHER  
MATERIAL STAINLESS STEEL PLATING PASSIVATE  
ELECTRICAL SPECIFICATIONS:  
MAXIMUM RATED VOLTAGE \_\_\_\_\_  
MAXIMUM RATED CURRENT \_\_\_\_\_  
NOTE: INDEX: DUAL BALL  
FOR S401-13 ("F" TYPE) SWITCHES, THE SHAFT POSITION MUST BE SPECIFIED ON DETAIL "XX" BELOW.



SYMBOLS USED IN MARKING PRINT

QTY / UNIT	MODEL USED ON	ASS'Y NO.
	HFR-4	
	HFR-4	
APPLICATION		
	CODE	

UNLESS OTHERWISE SPECIFIED DIMENSIONS ARE IN INCHES AND INCLUDE CHEMICALLY APPLIED OR PLATED FINISHES		FINAL APPROVAL	DATE
		<i>[Signature]</i>	11/7/68
		MECH. DES.	DATE
			11-5-68
DECIMALS	FRACTIONS	ELECT. DES.	DATE
.X ± .05	1/64		
.XX ± .01	TOLS. ANGLES	CHECKED	DATE
.XXX ± .005	0° .30'	<i>[Signature]</i>	11/5/68
MATERIAL		DRAWN	DATE
		<i>[Signature]</i>	8/12/67
FINISH			

THE TECHNICAL MATERIEL CORP.  
MAMARONECK, NEW YORK  
SWITCH, ROTARY

NOTICE TO PERSONS RECEIVING THIS DRAWING  
THE TECHNICAL MATERIEL CORPORATION claims proprietary right in the material disclosed hereon. This drawing is issued in confidence for engineering information only and may not be reproduced or used to manufacture anything shown hereon without permission from THE TECHNICAL MATERIEL CORPORATION to the user. This drawing is loaned for mutual assistance and is subject to recall at any time.

SIZE	CODE IDENT. NO.	DWG NO.	ISSUE
B	82679	SW 456	A
SCALE	SHEET		OF

NOTES