

DESG.	DIMENSION	TOL.	REMARK
A	$\frac{3}{8}$	$\pm .015$	SHAFT LG. FROM MTG. SURFACE
B	$\frac{3}{8}$	$\pm .005$	BUSH. LG.
C	$\frac{1}{4}$	$\pm .015$	FLAT LG. (IF REQ.)
D	$\frac{1}{4}$	$\pm 2^\circ$	FLAT ANGLE (IF REQ.)
E	$\frac{1}{4}$	$\pm .002$	FLAT (IF REQUIRED)
F	.531	$\pm .010$	KEY LOCATION (IF REQ.)
G	$180^\circ$		KEY LOCATION (IF REQ.)
M	.125	$\pm .010$	
N	.18	$\pm .093$	REAR SCR. EXT.
Q	$\frac{3}{16}$	$\pm .031$	REAR SHAFT EXT.
R	.375		1st SEC. SPACING

TMC PART NUMBER: SW-452 STAMP ON FRONT PLATE  
 FRONT PLATE SHAPE: ROUND X OR OBLONG

MECHANICAL SPECIFICATIONS:  
 NUMBER OF SECTIONS- 2  
 NUMBER OF POSITIONS- 6  
 ANGLE OF THROW-  $30^\circ$

CONTACTS:  
 SHORTING TYPE, SECTIONS \_\_\_\_\_  
 NON SHORTING TYPE, SECTIONS 2  
 SILVER PLATED BRASS, SECTIONS \_\_\_\_\_  
 SILVER ALLOY, SECTIONS All

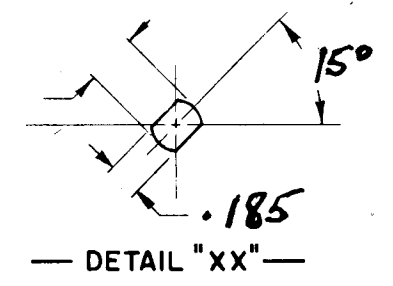
WAFERS:  
 BAKELITE, SECTIONS All  
 CERAMIC, SECTIONS \_\_\_\_\_  
 MYCALEX, SECTIONS \_\_\_\_\_  
 IMPREGNATION (IF REQ.) \_\_\_\_\_

FINISH REQUIREMENTS:  
 ARMY \_\_\_\_\_ NAVY X COMMERCIAL \_\_\_\_\_  
 SALT TEST (IF REQ.) 200 Hours

HARDWARE, TO BE SUPPLIED BY MANUFACTURER:  
 1 QUAN.  $\frac{3}{8}$  -32 NUTS  $\frac{1}{2}$  ACROSS FLATS  
 MATERIAL STAINLESS STEEL PLATING PASSIVATE  
 1 QUAN.  $\frac{3}{8}$  INTERNAL TOOTH LOCKWASHER  
 MATERIAL STAINLESS STEEL PLATING PASSIVATE

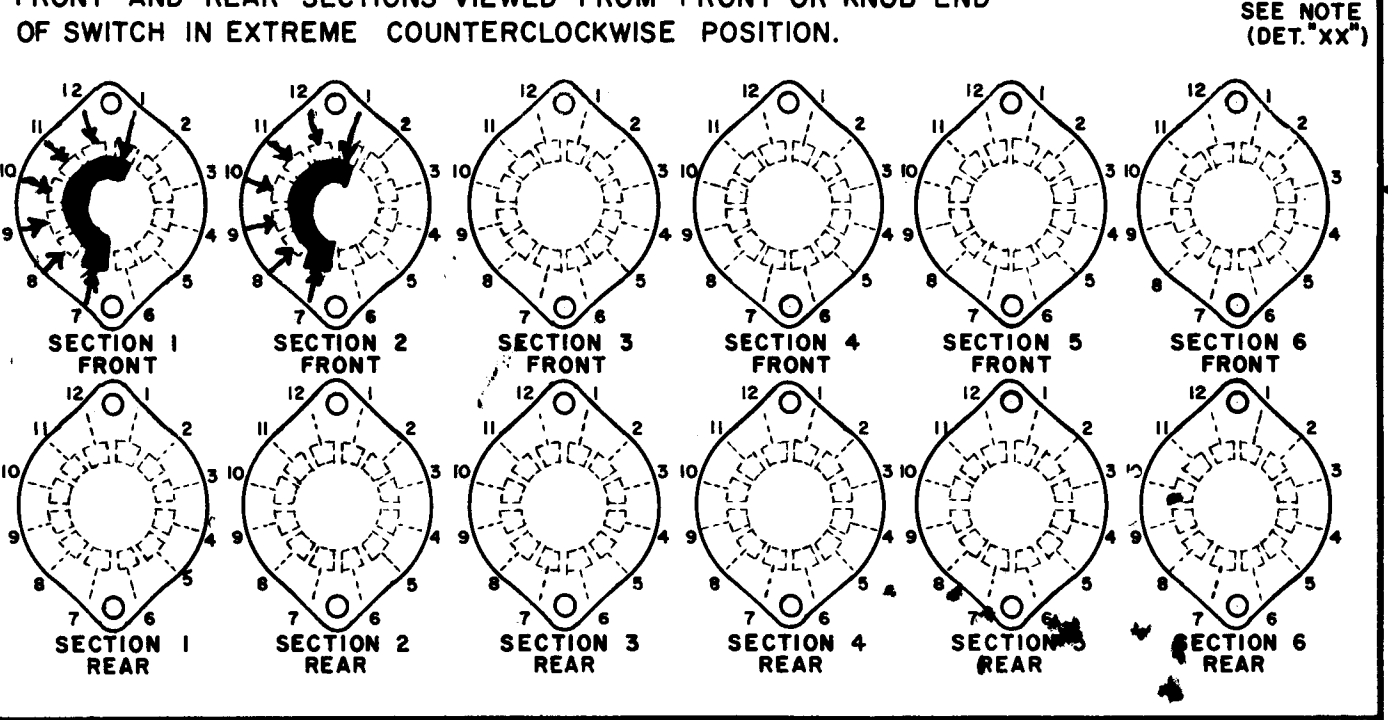
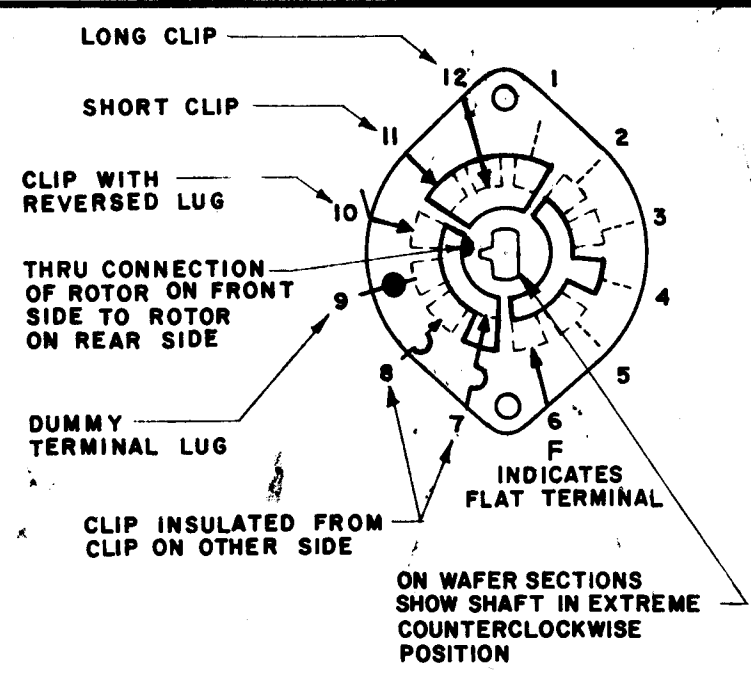
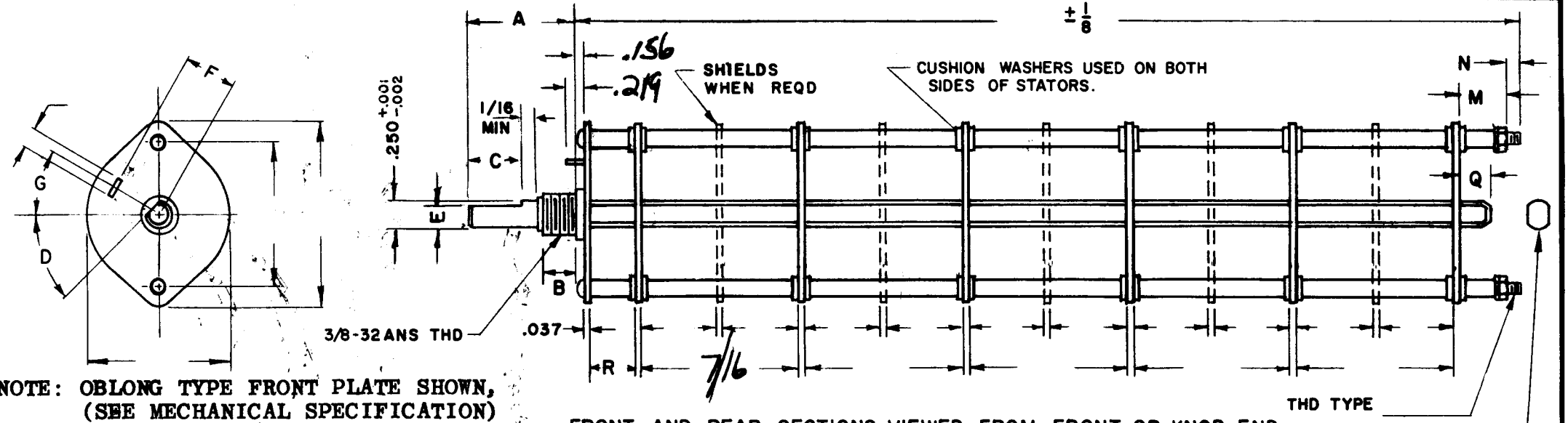
ELECTRICAL SPECIFICATIONS:  
 MAXIMUM RATED VOLTAGE \_\_\_\_\_  
 MAXIMUM RATED CURRENT \_\_\_\_\_

NOTE: INDEX: SINGLE BALL  
 FOR S401-13 ("F" TYPE) SWITCHES, THE SHAFT POSITION MUST BE SPECIFIED ON DETAIL "XX" BELOW.



NOTES

REVISIONS							
ZONE	LTR	DESCRIPTION	DATE	E.M.N.NO	DRAFT	CHKD	APPD
	X	EXPERIMENTAL RELEASE	8/17/67	X	C.V.		<i>[Signature]</i>
	Ø	ORIG. RELEASE FOR PROD	11-7-68	Ø	R.G.		<i>[Signature]</i>
	4	CHG. INDX. FRM. DUAL TO SINGLE	8/17/70	19947	GE		<i>[Signature]</i>



SWITCH, ROTARY - 12 POINT TYPE "F"

QTY / UNIT		MODEL USED ON	ASS'Y NO.	UNLESS OTHERWISE SPECIFIED DIMENSIONS ARE IN INCHES AND INCLUDE CHEMICALLY APPLIED OR PLATED FINISHES		FINAL APPROVAL <i>[Signature]</i> DATE 11/7/68		THE TECHNICAL MATERIEL CORP. MAMARONECK, NEW YORK	
APPLICATION		CODE		DECIMALS .X ± .05 .XX ± .01 .XXX ± .005	FRACTIONS 1/64 ANGLES 0° -30'	ELECT. DES. <i>[Signature]</i>	DATE 11-5-68	POSE	
MATERIAL				MATERIAL		CHECKED <i>[Signature]</i>	DATE 11/28/68	SWITCH, ROTARY	
FINISH				FINISH		DRAWN <i>[Signature]</i>	DATE 8/17/68	SIZE B	CODE IDENT. NO. 82679
NOTICE TO PERSONS RECEIVING THIS DRAWING				NOTICE TO PERSONS RECEIVING THIS DRAWING				DWG NO. SW 452	ISSUE A
THE TECHNICAL MATERIEL CORPORATION claims proprietary right in the material disclosed hereon. This drawing is issued in confidence for engineering information only and may not be reproduced or used to manufacture anything shown hereon without permission from THE TECHNICAL MATERIEL CORPORATION to the user. This drawing is loaned for mutual assistance and is subject to recall at any time.				THE TECHNICAL MATERIEL CORPORATION claims proprietary right in the material disclosed hereon. This drawing is issued in confidence for engineering information only and may not be reproduced or used to manufacture anything shown hereon without permission from THE TECHNICAL MATERIEL CORPORATION to the user. This drawing is loaned for mutual assistance and is subject to recall at any time.				SHEET	OF