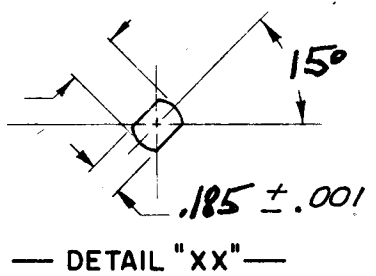


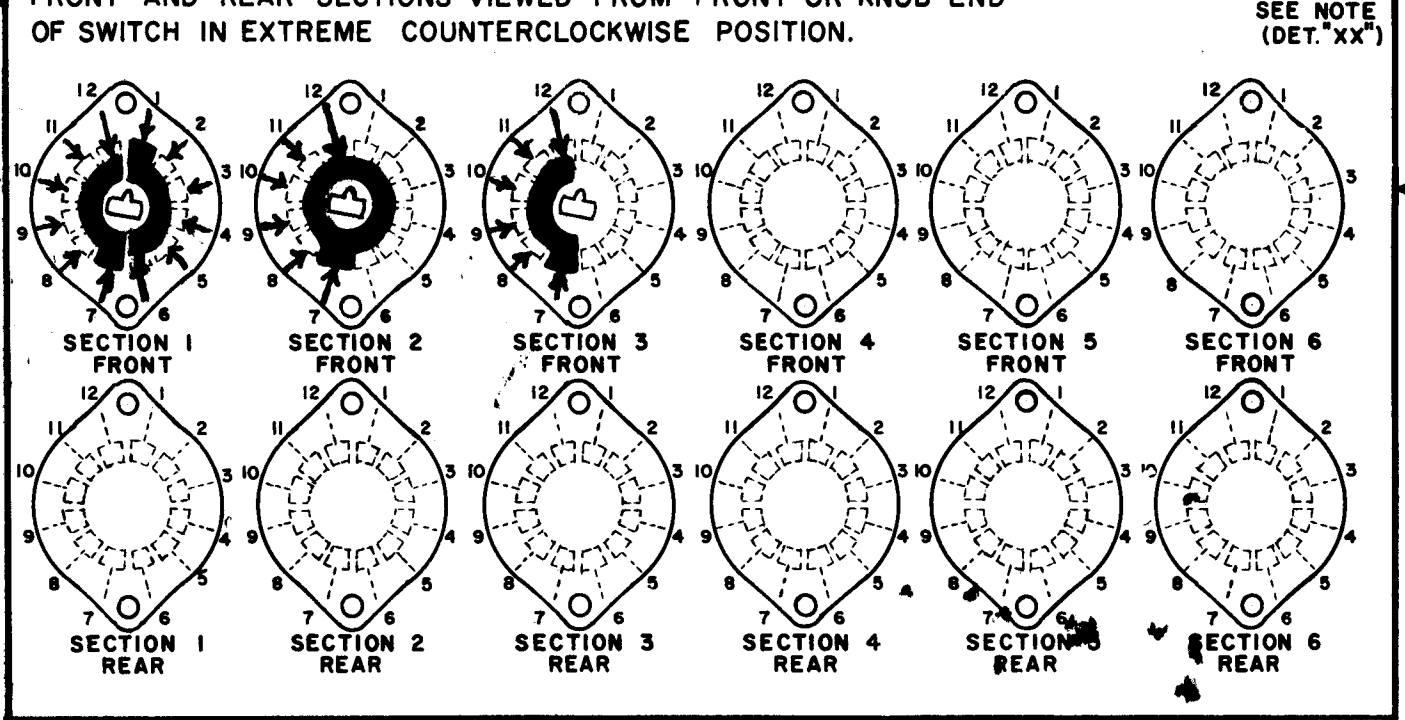
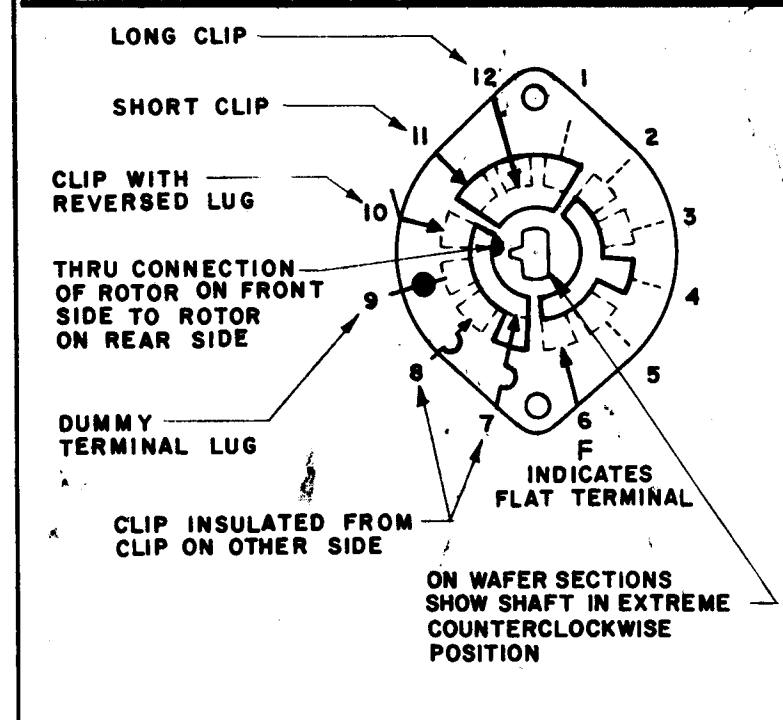
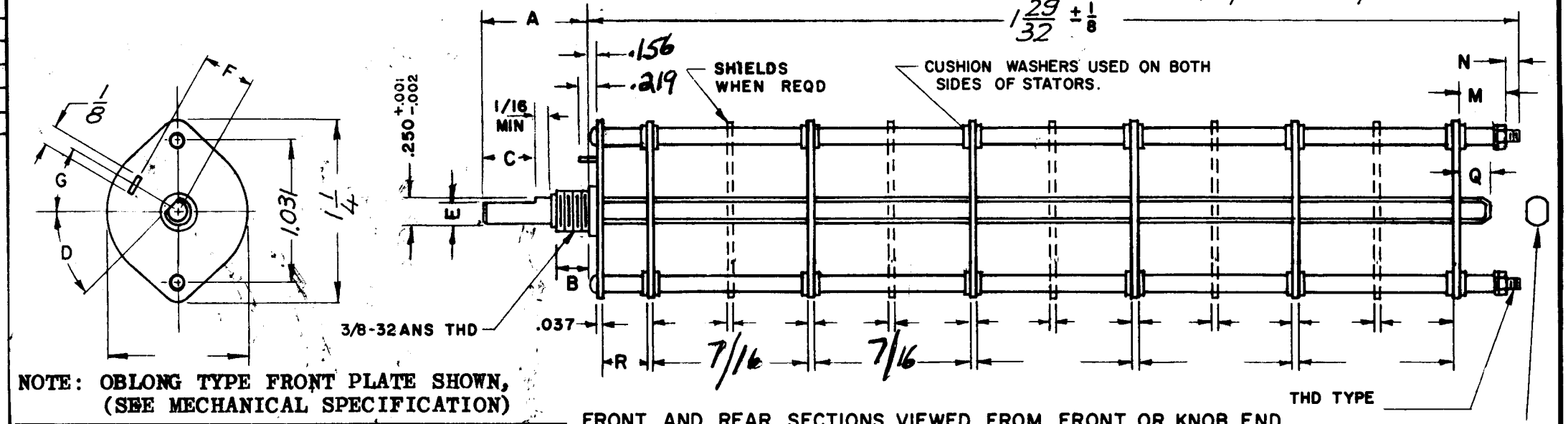
DESG.	DIMENSION	TOL.	REMARK
A	2	±.015	SHAFT LG. FROM MTG. SURFACE
B	3/8	±.005	BUSH. LG.
C	+	±.015	FLAT LG. (IF REQ.)
D	+	±2°	FLAT ANGLE (IF REQ.)
E	+	±.002	FLAT (IF REQUIRED)
F	.531	±.010	KEY LOCATION (IF REQ.)
G	180°		KEY LOCATION (IF REQ.)
M	5/32	±.010	
N	1/8	±.093	REAR SCR. EXT.
Q	3/16	±.031	REAR SHAFT EXT.
R	.375		1st SEC. SPACING

TMC PART NUMBER: SW- 451 STAMP ON FRONT PLATE  
FRONT PLATE SHAPE: ROUND X OR OBLONG  
MECHANICAL SPECIFICATIONS:  
NUMBER OF SECTIONS- 3  
NUMBER OF POSITIONS- 5  
ANGLE OF THROW- 30°  
CONTACTS:  
SHORTING TYPE, SECTIONS 2  
NON SHORTING TYPE, SECTIONS 1+3  
SILVER PLATED BRASS, SECTIONS  
SILVER ALLOY, SECTIONS ALL  
WAFERS:  
BAKELITE, SECTIONS ALL  
CERAMIC, SECTIONS  
MYCALEX, SECTIONS  
IMPREGNATION (IF REQ.)  
FINISH REQUIREMENTS:  
ARMY X NAVY X COMMERCIAL  
SALT TEST (IF REQ.) 200 HOURS  
HARDWARE, TO BE SUPPLIED BY MANUFACTURER:  
1 QUAN. 3/8 -32 NUTS 1/2 ACROSS FLATS  
MATERIAL STAINLESS STEEL PLATING PASSIVATE  
1 QUAN. 3/8 INTERNAL TOOTH LOCKWASHER  
MATERIAL STAINLESS STEEL PLATING PASSIVATE  
ELECTRICAL SPECIFICATIONS:  
MAXIMUM RATED VOLTAGE  
MAXIMUM RATED CURRENT  
NOTE: INDEX: DUAL BALL  
FOR S401-13 ("F" TYPE) SWITCHES, THE SHAFT POSITION MUST BE SPECIFIED ON DETAIL "XX" BELOW.



NOTES

ZONE	LTR	DESCRIPTION	DATE	EMN	DFT	CK	APP	REVISIONS					
ZONE	LTR	DESCRIPTION	DATE	E.M.N.NO	DRAFT	CHKD	APPD						
B		ADD CLIP TO TERM 7 SEC 2 FR.	3/27/1979	GE	#10	OP		X	EXPERIMENTAL RELEASE	8/17/67	X	C.V.	
								Ø	ORIG. RELEASE FOR PROD	11-7-68	Ø	R.G.	J.D.
								A	REVISED	1/29/70	19734	KLH	MS OP



SWITCH, ROTARY - 12 POINT TYPE "F"

QTY / UNIT		MODEL USED ON	ASS'Y NO.	UNLESS OTHERWISE SPECIFIED DIMENSIONS ARE IN INCHES AND INCLUDE CHEMICALLY APPLIED OR PLATED FINISHES		FINAL APPROVAL		DATE		THE TECHNICAL MATERIEL CORP. MAMARONECK, NEW YORK			
1		MSA-4		DECIMALS .X ± .05 .XX ± .01 .XXX ± .005		MECH. DES.		11/7/68		SWITCH, ROTARY MODE			
APPLICATION		CODE		FRACTIONS 1/64 ANGLES 0°-30'		ELECT. DES.		11-5-65					
MATERIAL				FINISH		CHECKED		DATE		SIZE	CODE IDENT. NO.	DWG NO.	ISSUE
NOTICE TO PERSONS RECEIVING THIS DRAWING THE TECHNICAL MATERIEL CORPORATION claims proprietary right in the material disclosed hereon. This drawing is issued in confidence for engineering information only and may not be reproduced or used to manufacture anything shown hereon without permission from THE TECHNICAL MATERIEL CORPORATION to the user. This drawing is loaned for mutual assistance and is subject to recall at any time.						DRAWN		DATE		B	82679	SW 451	B
										SCALE	SHEET		OF