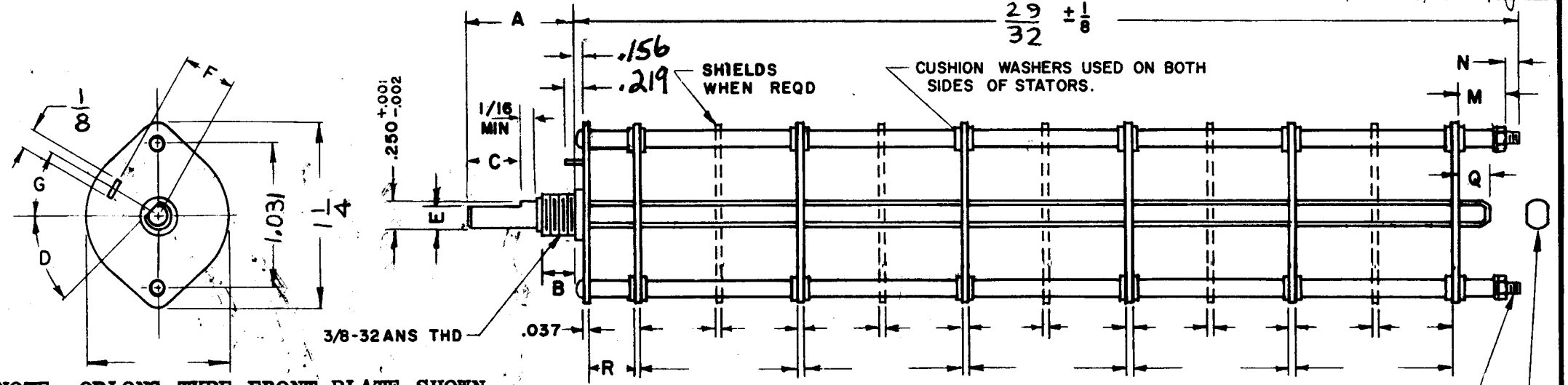


DESG.	DIMENSION	TOL.	REMARK
A	3/4	±.015	SHAFT LG. FROM MTG. SURFACE
B	3/8	±.005	BUSH. LG.
C	+	±.015	FLAT LG. (IF REQ.)
D	+	±2°	FLAT ANGLE (IF REQ.)
E	+	±.002	FLAT (IF REQUIRED)
F	.631	±.010	KEY LOCATION (IF REQ.)
G	180°		KEY LOCATION (IF REQ.)
M	5/32	±.010	
N	1/8	±.093	REAR SCR. EXT.
Q	3/16	±.031	REAR SHAFT EXT.
R	.375		1st SEC. SPACING

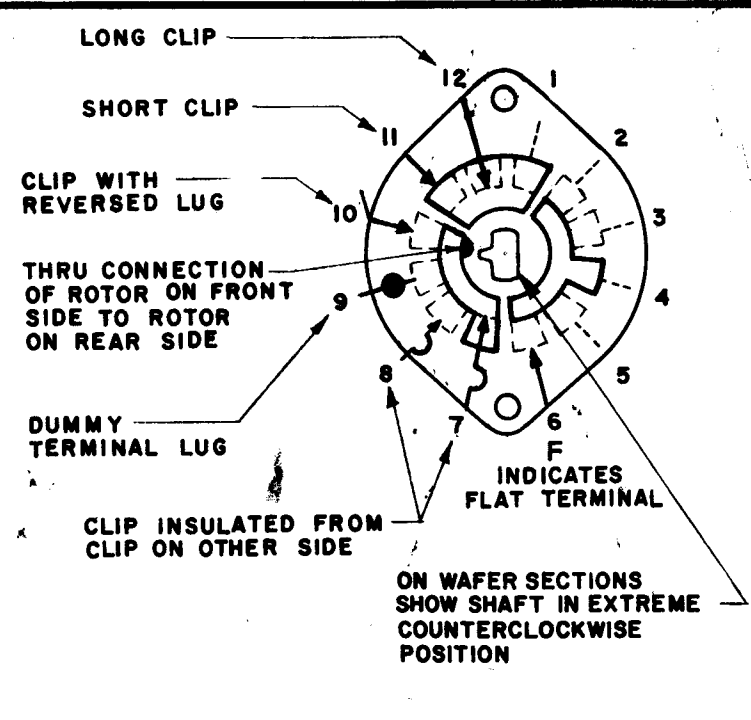
TMC PART NUMBER: SW-449 STAMP ON FRONT PLATE
FRONT PLATE SHAPE: ROUND X OR OBLONG
MECHANICAL SPECIFICATIONS:
NUMBER OF SECTIONS- 1
NUMBER OF POSITIONS- 3
ANGLE OF THROW- 30°
CONTACTS:
SHORTING TYPE, SECTIONS _____
NON SHORTING TYPE, SECTIONS 1
SILVER PLATED BRASS, SECTIONS _____
SILVER ALLOY, SECTIONS All
WAFERS:
BAKELITE, SECTIONS All
CERAMIC, SECTIONS _____
MYCALEX, SECTIONS _____
IMPREGNATION (IF REQ.) _____
FINISH REQUIREMENTS:
ARMY _____ NAVY X COMMERCIAL _____
SALT TEST (IF REQ.) 200 Hours
HARDWARE, TO BE SUPPLIED BY MANUFACTURER:
1 QUAN. 3/8 -32 NUTS 1/2 ACROSS FLATS
MATERIAL STAINLESS STEEL PLATING PASSIVATE
1 QUAN. 3/8 INTERNAL TOOTH LOCKWASHER
MATERIAL STAINLESS STEEL PLATING PASSIVATE
ELECTRICAL SPECIFICATIONS:
MAXIMUM RATED VOLTAGE _____
MAXIMUM RATED CURRENT _____
NOTE: INDEX-DUAL BALL
FOR S401-13 ("F" TYPE) SWITCHES, THE SHAFT POSITION MUST BE SPECIFIED ON DETAIL "XX" BELOW.

A CONTACTS WERE ON FRONT SECTION 11/11/69 1965 KD
B REVISED 1-30-70 19736 KD

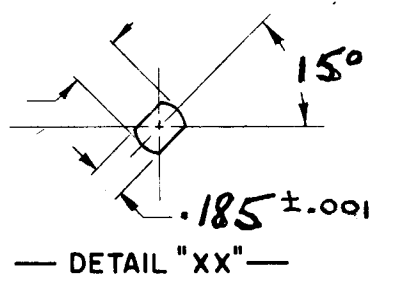
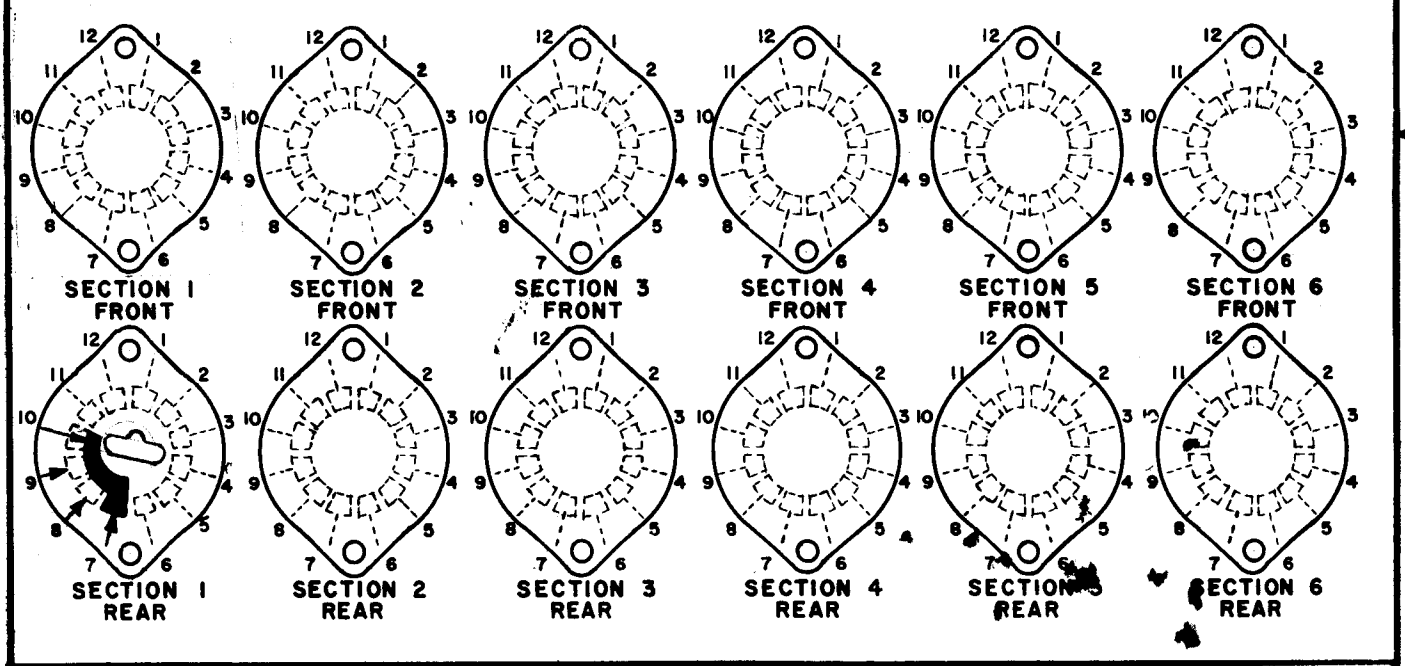
REVISIONS						
ZONE	LTR	DESCRIPTION	DATE	E.M.N.NO	DRAFT	CHKD APPD
X		EXPERIMENTAL RELEASE	8/17/67	X	C.V.	
XI		DELETED HFRR-4	10/11/67			
Ø		ORIG. RELEASE FOR PROD	11-7-68	Ø	R.G.	



NOTE: OBLONG TYPE FRONT PLATE SHOWN, (SEE MECHANICAL SPECIFICATION)



FRONT AND REAR SECTIONS VIEWED FROM FRONT OR KNOB END OF SWITCH IN EXTREME COUNTERCLOCKWISE POSITION. SEE NOTE (DET. "XX")



SYMBOLS USED IN MARKING PRINT

1	HFRR-4		
1	HFRR-4		
1	MSAR-4		
QTY / UNIT	MODEL USED ON	ASS'Y NO.	
APPLICATION			
	CODE		

UNLESS OTHERWISE SPECIFIED DIMENSIONS ARE IN INCHES AND INCLUDE CHEMICALLY APPLIED OR PLATED FINISHES		FINAL APPROVAL	DATE
DECIMALS .X ± .05 .XX ± .01 .XXX ± .005	FRACTIONS 1/64 TOLS. ANGLES 0° 30'	<i>[Signature]</i>	11/7/68
MATERIAL		MECH. DES.	DATE
FINISH		ELECT. DES.	DATE
		CHECKED	DATE
		DRAWN	DATE

THE TECHNICAL MATERIEL CORP.
MAMARONECK, NEW YORK
METER FUNCTION

NOTICE TO PERSONS RECEIVING THIS DRAWING
THE TECHNICAL MATERIEL CORPORATION claims proprietary right in the material disclosed hereon. This drawing is issued in confidence for engineering information only and may not be reproduced or used to manufacture anything shown hereon without permission from THE TECHNICAL MATERIEL CORPORATION to the user. This drawing is loaned for mutual assistance and is subject to recall at any time.

SIZE	CODE IDENT. NO.	DWG NO.	ISSUE
B	82679	SW 449	B
SCALE	SHEET		OF

NOTES