

| DESG. | DIMENSION | TOL. | REMARK |
|-------|-----------|-------|-----------------------------|
| A | 3/4 | ±.015 | SHAFT LG. FROM MTG. SURFACE |
| B | 1/4 | ±.005 | BUSH. LG. |
| C | — | ±.015 | FLAT LG. (IF REQ.) |
| D | — | ±2° | FLAT ANGLE (IF REQ.) |
| E | — | ±.002 | FLAT (IF REQUIRED) |
| F | 17/32 | ±.010 | KEY LOCATION (IF REQ.) |
| G | 180° | — | KEY LOCATION (IF REQ.) |
| M | 5/32 | ±.010 | |
| N | 1/8 | ±.093 | REAR SCR. EXT. |
| Q | 3/16 | ±.031 | REAR SHAFT EXT. |
| R | 9/32 | — | 1st SEC. SPACING |

| REVISIONS | | | | | | |
|-----------|-----|---------------------|--------|----------|-------|-----------|
| ZONE | LTR | DESCRIPTION | DATE | E.M.N.NO | DRAFT | CHKD APPD |
| | A | VENDOR NO. WAS -451 | 6.8.67 | — | WHO | OP |
| | B | UPDATED & REV. | 6.3.68 | 18952 | W.S. | OP |

TMC PART NUMBER: SW-446 STAMP ON FRONT PLATE
FRONT PLATE SHAPE: ROUND X OR OBLONG

MECHANICAL SPECIFICATIONS:
NUMBER OF SECTIONS- 1
NUMBER OF POSITIONS- 5
ANGLE OF THROW- 30°

CONTACTS:
SHORTING TYPE, SECTIONS _____
NON SHORTING TYPE, SECTIONS _____
SILVER PLATED BRASS, SECTIONS _____
SILVER ALLOY, SECTIONS _____

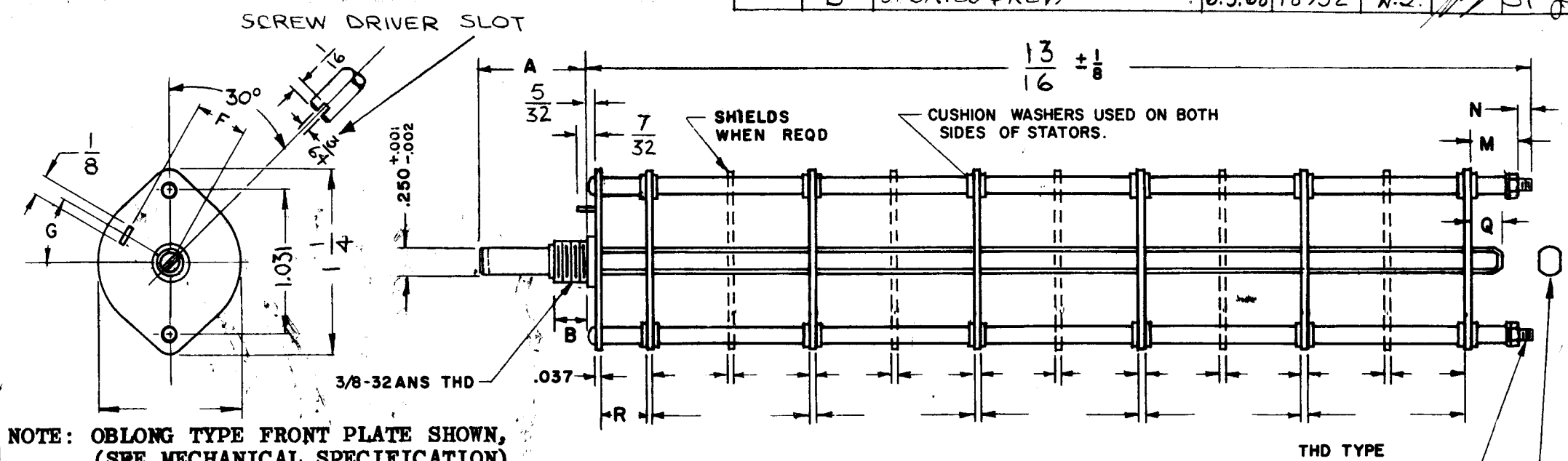
WAFERS:
BAKELITE, SECTIONS _____
CERAMIC, SECTIONS _____
MYCALEX, SECTIONS _____
IMPREGNATION (IF REQ.) _____

FINISH REQUIREMENTS:
ARMY _____ NAVY _____ COMMERCIAL X
SALT TEST (IF REQ.) _____

HARDWARE, TO BE SUPPLIED BY MANUFACTURER:
1 QUAN. 3/8 -32 NUTS 1/2 ACROSS FLATS
MATERIAL STEEL PLATING CADMIUM
1 QUAN. 3/8 INTERNAL TOOTH LOCKWASHER
MATERIAL STEEL PLATING CADMIUM

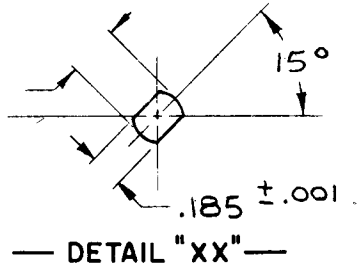
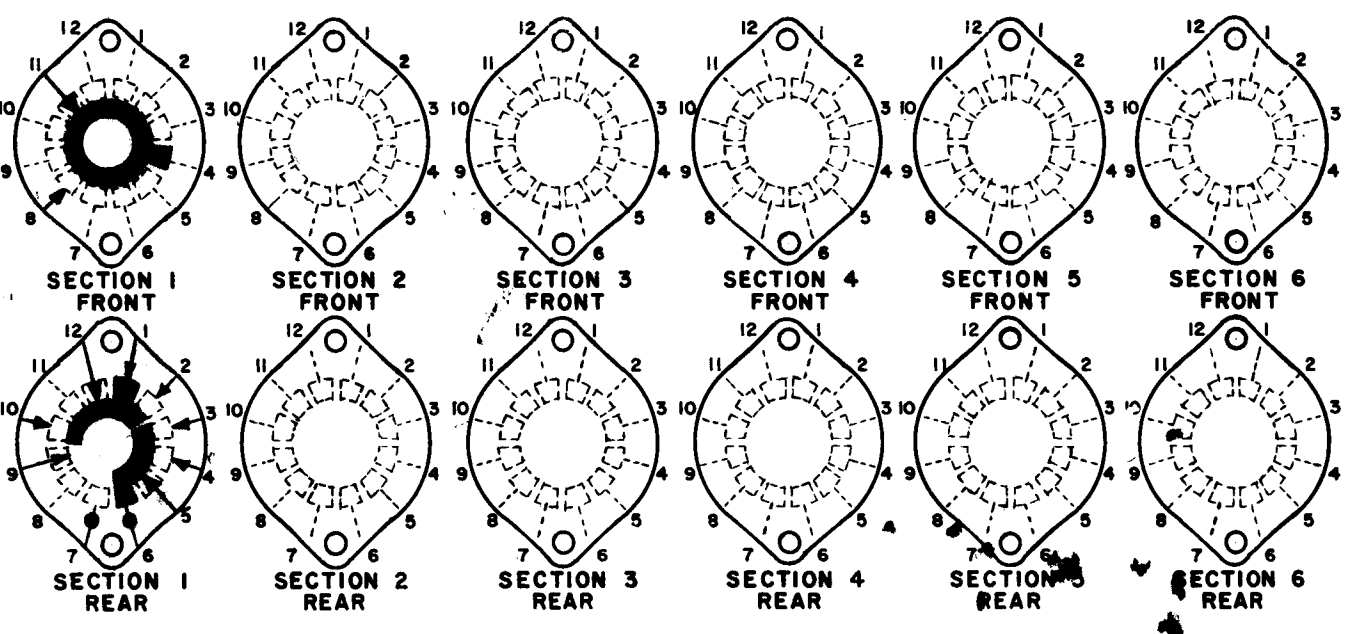
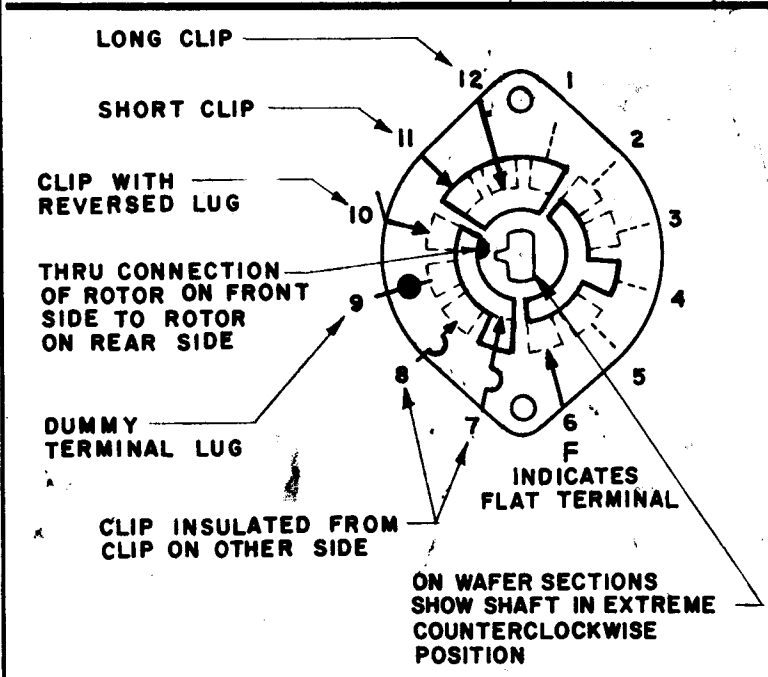
ELECTRICAL SPECIFICATIONS:
MAXIMUM RATED VOLTAGE 110V. AC
MAXIMUM RATED CURRENT 1.0 AMP BREAK
5.0 AMP CARRY

NOTE:
FOR S401-13 ("F" TYPE) SWITCHES, THE SHAFT POSITION MUST BE SPECIFIED ON DETAIL "XX" BELOW.



NOTE: OBLONG TYPE FRONT PLATE SHOWN, (SEE MECHANICAL SPECIFICATION)

FRONT AND REAR SECTIONS VIEWED FROM FRONT OR KNOB END OF SWITCH IN EXTREME COUNTERCLOCKWISE POSITION.



SYMBOLS USED IN MARKING PRINT

| | | |
|--------------|---------------|-----------|
| 1 | MMX-1 | BMA104 |
| QTY 1/2 UNIT | MODEL USED ON | ASS'Y NO. |
| APPLICATION | | |
| S401-13 | CODE C | |

NOTICE TO PERSONS RECEIVING THIS DRAWING
THE TECHNICAL MATERIEL CORPORATION claims proprietary right in the material disclosed hereon. This drawing is issued in confidence for engineering information only and may not be reproduced or used to manufacture anything shown hereon without permission from THE TECHNICAL MATERIEL CORPORATION to the user. This drawing is loaned for mutual assistance and is subject to recall at any time.

| | | |
|---|----------------------------------|--------------|
| UNLESS OTHERWISE SPECIFIED DIMENSIONS ARE IN INCHES AND INCLUDE CHEMICALLY APPLIED OR PLATED FINISHES | FINAL APPROV. <i>[Signature]</i> | DATE 5/10/67 |
| DECIMALS .X ± .05 .XX ± .01 .XXX ± .005 | MECH. DES. <i>[Signature]</i> | DATE 5/9/67 |
| FRACTIONS 1/64 | ELECT. DES. <i>[Signature]</i> | DATE 5/9/67 |
| TOLS. ANGLES 0°-30' | CHECKED | DATE |
| MATERIAL | DRAWN RME | DATE 5/10/67 |
| FINISH | <i>[Signature]</i> | DATE 5/10/67 |

| | | | |
|------------------------------|-----------------------|---------------|---------|
| THE TECHNICAL MATERIEL CORP. | | | |
| MAMARONECK, NEW YORK | | | |
| O. POSE | | | |
| SWITCH, ROTARY FS, LOOP | | | |
| SIZE B | CODE IDENT. NO. 82679 | DWG NO. SW446 | ISSUE B |
| SCALE | SHEET | | OF |

NOTES