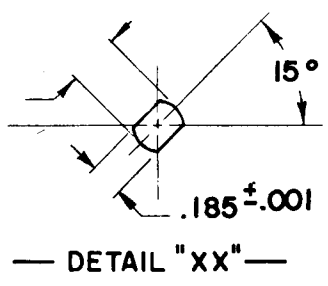


DESG.	DIMENSION	TOL.	REMARK
A	1-3/8	±.015	SHAFT LG. FROM MTG. SURFACE
B	1/4	±.005	BUSH. LG.
C	—	±.015	FLAT LG. (IF REQ.)
D	—	±2°	FLAT ANGLE (IF REQ.)
E	—	±.002	FLAT (IF REQUIRED)
F	17/32	±.010	KEY LOCATION (IF REQ.)
G	180°		KEY LOCATION (IF REQ.)
M	5/32	±.010	
N	1/8	±.093	REAR SCR. EXT.
Q	7/16	±.031	REAR SHAFT EXT.
R	3/8		1st SEC. SPACING

TMC PART NUMBER: SW 444-B STAMP ON FRONT PLATE
FRONT PLATE SHAPE: ROUND X OR OBLONG
MECHANICAL SPECIFICATIONS:
NUMBER OF SECTIONS- 3
NUMBER OF POSITIONS- CONTINUOUS
ANGLE OF THROW- 30°
CONTACTS:
SHORTING TYPE, SECTIONS _____
NON SHORTING TYPE, SECTIONS 1, 2, 3
SILVER PLATED BRASS, SECTIONS 1, 2, 3
SILVER ALLOY, SECTIONS _____
WAFERS:
BAKELITE, SECTIONS 1, 2, 3
CERAMIC, SECTIONS _____
MYCALEX, SECTIONS _____
IMPREGNATION (IF REQ.) _____
FINISH REQUIREMENTS:
ARMY NAVY COMMERCIAL X
SALT TEST (IF REQ.) _____
HARDWARE, TO BE SUPPLIED BY MANUFACTURER:
1 QUAN. 3/8 -32 NUTS 1/2 ACROSS FLATS
MATERIAL STEEL PLATING CADMIUM
1 QUAN. 3/8 INTERNAL TOOTH LOCKWASHER
MATERIAL STEEL PLATING CADMIUM
ELECTRICAL SPECIFICATIONS:
MAXIMUM RATED VOLTAGE _____
MAXIMUM RATED CURRENT _____

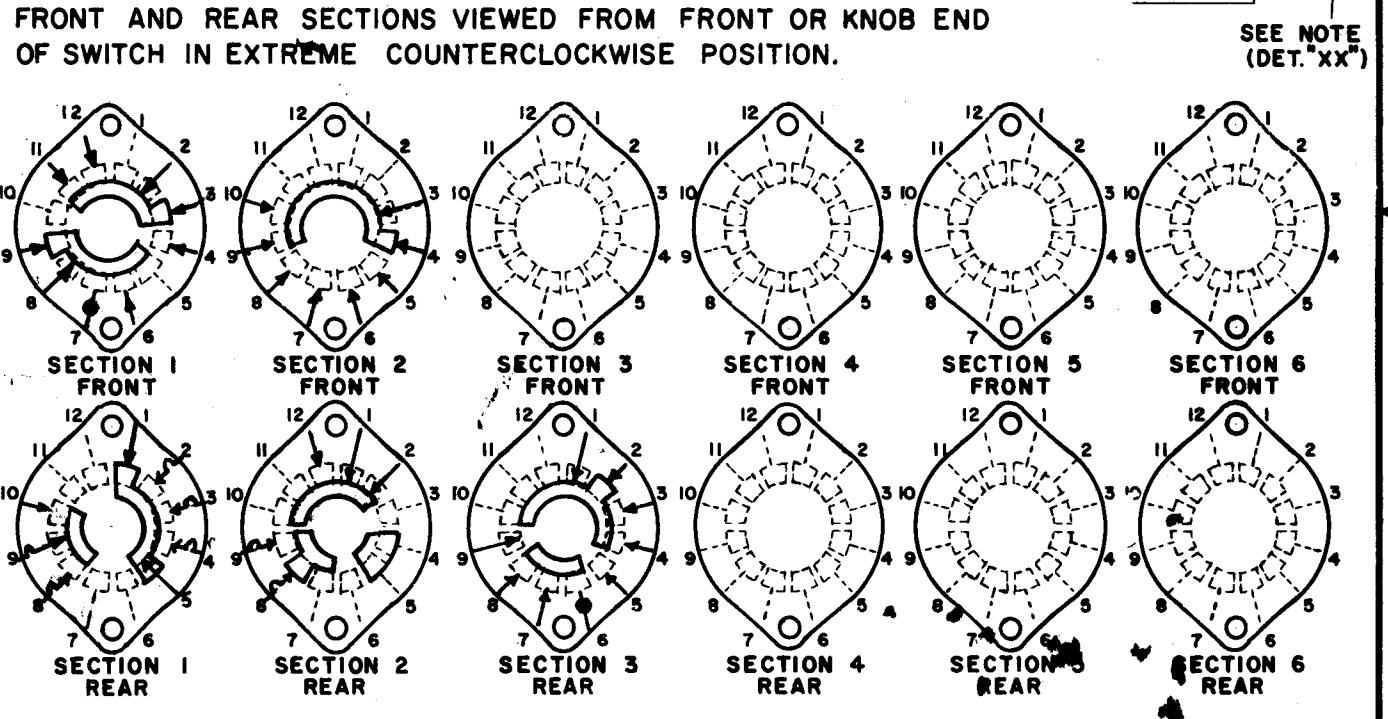
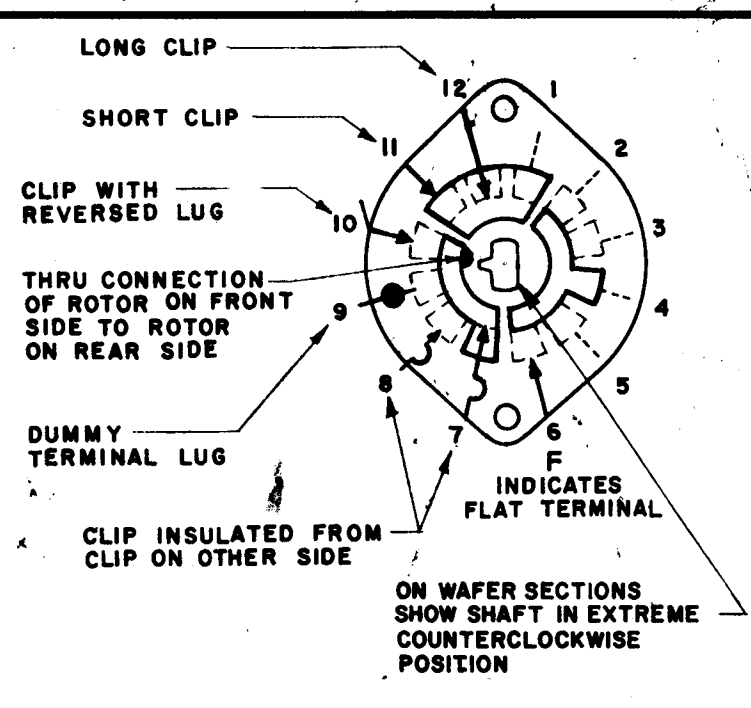
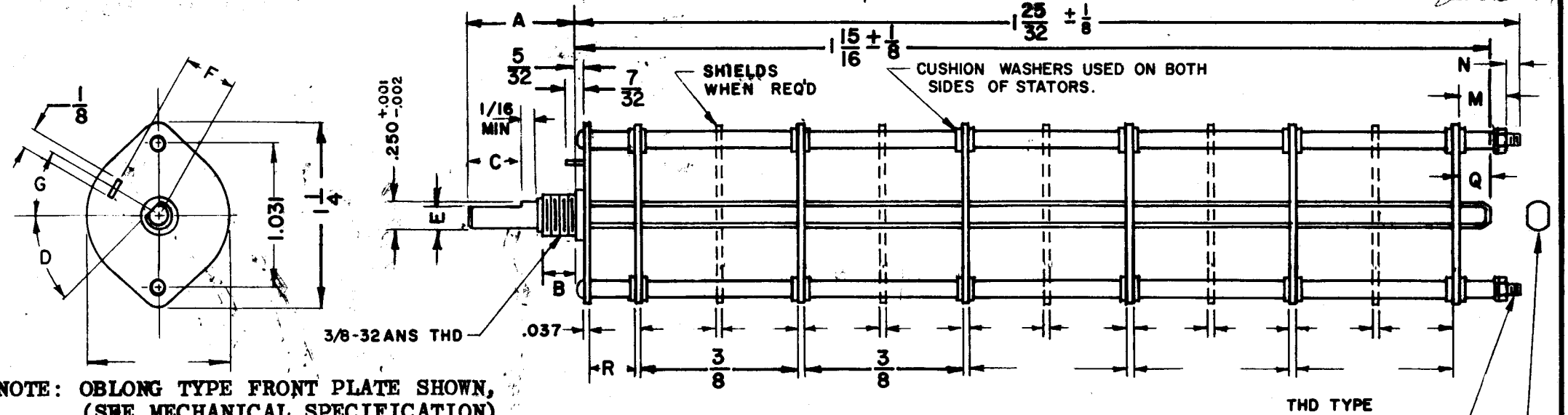
NOTE:
FOR S401-13 ("F" TYPE) SWITCHES, THE SHAFT POSITION MUST BE SPECIFIED ON DETAIL "XX" BELOW.



NOTES

LTR	DESCRIPTION	DATE	E.M.N. NO	DRAFT	CHKD	APPD
A	CONTACT # 9 WAS SHORT CLIP	5-16-67	18225	NLD	OP	
B	SECT. 1 REAR CONTACT IO WAS LONG CLIP	9-8-67	18488	HG	OP	

ZONE	LTR	DESCRIPTION	DATE	E.M.N. NO	DRAFT	CHKD	APPD
	X	EXPERIMENTAL RELEASE	1-10-67				
	X1	SECT 2 FRONT PIN IO ADDED	4-11-67		L.A.K		
	X2	SECT 3 REAR ON 6 DUMMY ADDED	4-17-67		G.D.L		
	X3	SECT 1 FRONT ON 7 DUMMY ADDED	4-24-67		G.D.L		
	Ø	ORIGINAL RELEASE FOR PRODUCTION	5-3-67		G.D.L		



SYMBOLS USED IN MARKING PRINT

(31324594) SWITCH, ROTARY - 12 POINT TYPE "F"

QTY / UNIT	MMX-1	BMA 104
	MODEL USED ON	ASS'Y NO.
APPLICATION		
	CODE	
	C	

NOTICE TO PERSONS RECEIVING THIS DRAWING
THE TECHNICAL MATERIEL CORPORATION claims proprietary right in the material disclosed hereon. This drawing is issued in confidence for engineering information only and may not be reproduced or used to manufacture anything shown hereon without permission from THE TECHNICAL MATERIEL CORPORATION to the user. This drawing is loaned for mutual assistance and is subject to recall at any time.

UNLESS OTHERWISE SPECIFIED DIMENSIONS ARE IN INCHES AND INCLUDE CHEMICALLY APPLIED OR PLATED FINISHES	FINAL APPROVAL MECH. DES.	DATE 4/26/67
DECIMALS .X ± .05 .XX ± .01 .XXX ± .005	FRACTIONS 1/64 ANGLES 0° - 30'	ELECT. DES. DATE 4/26/67
MATERIAL SEE SPECS.	CHECKED H. AUSTIN	DATE 4-10-67
FINISH SEE SPECS.	DRAWN H. AUSTIN	DATE 4-10-67

THE TECHNICAL MATERIEL CORP. MAMARONECK, NEW YORK			
O. POSE			
SWITCH, ROTARY MODE			
SIZE B	CODE IDENT. NO. 82679	DWG NO. SW444	ISSUE B
SCALE	SHEET		OF

MIL Allen 4/27/67