

DESG.	DIMENSION	TOL.	REMARK
A	3/4	±.015	SHAFT LG. FROM MTG. SURFACE
B	3/8	±.005	BUSH. LG.
C	#	±.015	FLAT LG. (IF REQ.)
D	#	±2°	FLAT ANGLE (IF REQ.)
E	#	±.002	FLAT (IF REQUIRED)
F	17/32	±.010	KEY LOCATION (IF REQ.)
G	180°		KEY LOCATION (IF REQ.)
M	5/32	±.010	
N	1/8	±.093	REAR SCR. EXT.
Q	3/16	±.031	REAR SHAFT EXT.
R	9/32		1st SEC. SPACING

TMC PART NUMBER: SW-439 STAMP ON FRONT PLATE  
 FRONT PLATE SHAPE: ROUND  OR OBLONG

MECHANICAL SPECIFICATIONS:  
 NUMBER OF SECTIONS - 2  
 NUMBER OF POSITIONS - 6  
 ANGLE OF THROW - 30°

CONTACTS:  
 SHORTING TYPE, SECTIONS \_\_\_\_\_  
 NON SHORTING TYPE, SECTIONS 1, 2  
 SILVER PLATED BRASS, SECTIONS 1, 2  
 SILVER ALLOY, SECTIONS \_\_\_\_\_

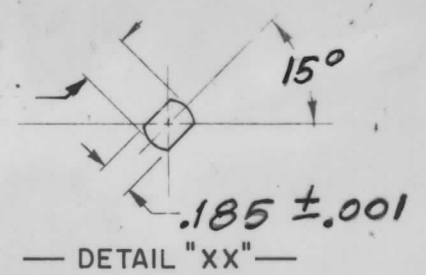
WAFERS:  
 BAKELITE, SECTIONS 1, 2  
 CERAMIC, SECTIONS \_\_\_\_\_  
 MYCALEX, SECTIONS \_\_\_\_\_  
 IMPREGNATION (IF REQ.) \_\_\_\_\_

FINISH REQUIREMENTS:  
 ARMY \_\_\_\_\_ NAVY \_\_\_\_\_ COMMERCIAL   
 SALT TEST (IF REQ.) \_\_\_\_\_

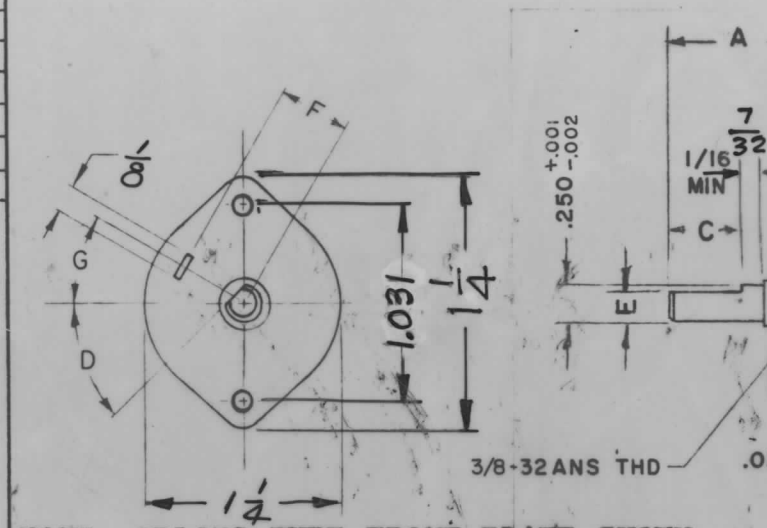
HARDWARE, TO BE SUPPLIED BY MANUFACTURER:  
 1 QUAN. 3/8-32 NUTS 1/2 ACROSS FLATS  
 MATERIAL STEEL PLATING CADMIUM  
 1 QUAN. 3/8 INTERNAL TOOTH LOCKWASHER  
 MATERIAL STEEL PLATING CADMIUM

ELECTRICAL SPECIFICATIONS:  
 MAXIMUM RATED VOLTAGE +  
 MAXIMUM RATED CURRENT +

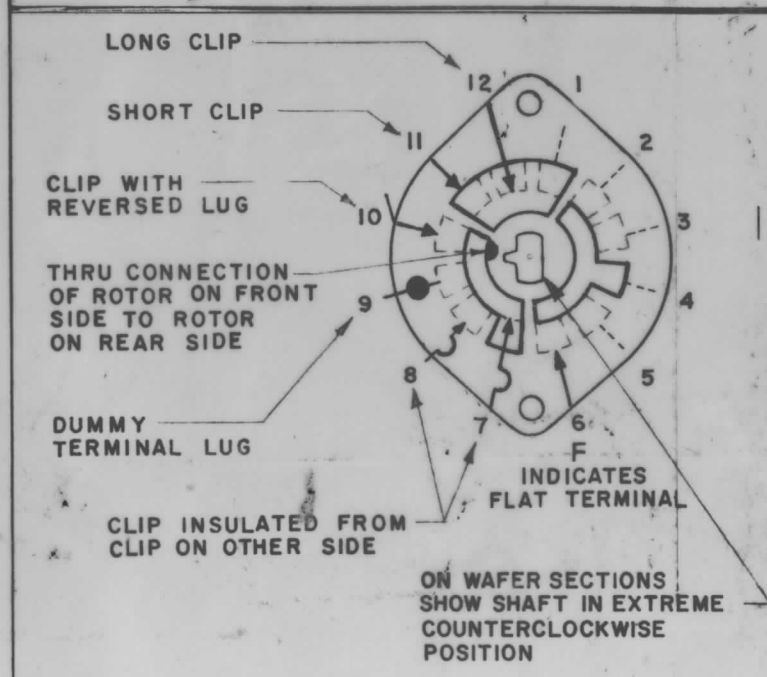
NOTE:  
 FOR S401-13 ("F" TYPE) SWITCHES, THE SHAFT POSITION MUST BE SPECIFIED ON DETAIL "XX" BELOW.



NOTES



NOTE: OBLONG TYPE FRONT PLATE SHOWN. (SEE MECHANICAL SPECIFICATION)

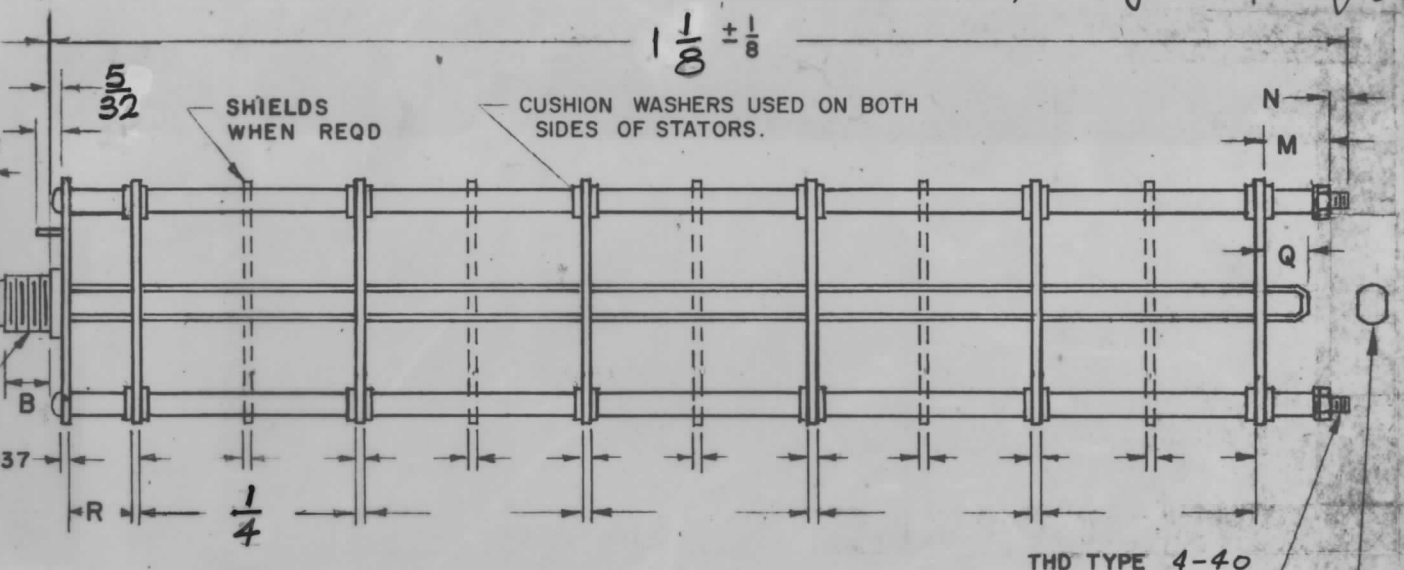


SYMBOLS USED IN MARKING PRINT

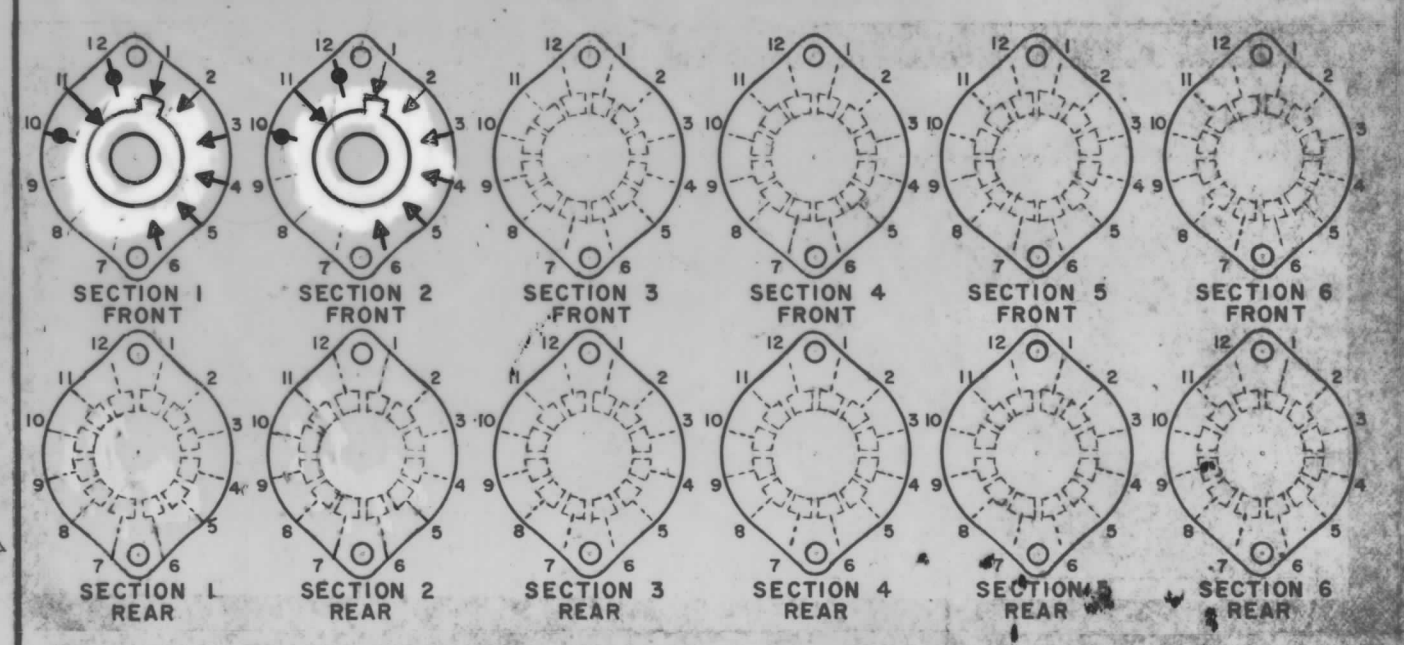
1	VOX-7	BMA110
Q'TY./UNIT	MODEL USED ON	ASS'Y. NO.
SCALE	CODE	

THE CONTENTS OF THIS DRAWING ARE THE EXCLUSIVE PROPERTY OF THE TECHNICAL MATERIEL CORP. ITS UNAUTHORIZED USE OR REPRODUCTION IN WHOLE OR IN PART IS STRICTLY FORBIDDEN.

REVISIONS					
SYM	DESCRIPTION	DATE	E.M.N. NO.	DRAFT	CHKD APPD
X	EXP. RELEASE	1/12/67	X	D.A.C.	
X1	GENERAL REVISION OF DIMENSIONS	1/13/67	X1	HLA	
X2	COMPLETE REVISION	5/3/68	X2	JFA	JFA
Ø	ORIGINAL RELEASE FOR PROD.	5/3/68	Ø	JFA	JFA



FRONT AND REAR SECTIONS VIEWED FROM FRONT OR KNOB END OF SWITCH IN EXTREME COUNTERCLOCKWISE POSITION.



## SWITCH, ROTARY - 12 POINT TYPE "F"

MATERIAL	THE TECHNICAL MATERIEL CORP. MAMARONECK, NEW YORK			
FINISH	TITLE SWITCH, ROTARY METER			
UNLESS OTHERWISE SPECIFIED DIMENSIONS ARE IN INCHES AND INCLUDE CHEMICALLY APPLIED OR PLATED FINISHES	DRAWN JL	DATE 11/4/66	FINAL APPROVAL	DATE 5/3/68
DECIMALS .X ± .05 .XX ± .01 .XXX ± .005	CHECKED JFA	DATE 4/26/68	SW439	
FRACTIONS ± 1/64 ANGLES ± 0° 30'	ELECT. DES. JFA	DATE 5/3/68		
TOLERANCES	MECH. DES. JFA	DATE 5-3-68		
SHEET			REV. LTR.	