

DESG.	DIMENSION	TOL.	REMARK
A	.875	±.015	SHAFT LG. FROM MTG. SURFACE
B	.375	±.005	BUSH. LG.
C	.375	±.015	FLAT LG. (IF REQ.)
D	170°	±3°	FLAT ANGLE (IF REQ.)
E	.218	±.002	FLAT (IF REQUIRED)
F	.531	±.010	KEY LOCATION (IF REQ.)
G	180°	±2°	KEY LOCATION (IF REQ.)
M	.125	±.010	
N	.125	±.093	REAR SCR. EXT.
Q	.150	±.031	REAR SHAFT EXT.
R	.375	±.010	1st SEC. SPACING

TMC PART NUMBER: SW-438 STAMP ON FRONT PLATE
 FRONT PLATE SHAPE: ROUND OR OBLONG X

MECHANICAL SPECIFICATIONS:
 NUMBER OF SECTIONS - 5
 NUMBER OF POSITIONS - 18, NO STOP, CONTINUOUS
 ANGLE OF THROW - 20°

CONTACTS:
 SHORTING TYPE, SECTIONS NONE
 NON SHORTING TYPE, SECTIONS 1 THRU 5
 SILVER PLATED BRASS, SECTIONS —
 SILVER ALLOY, SECTIONS 1 THRU 5

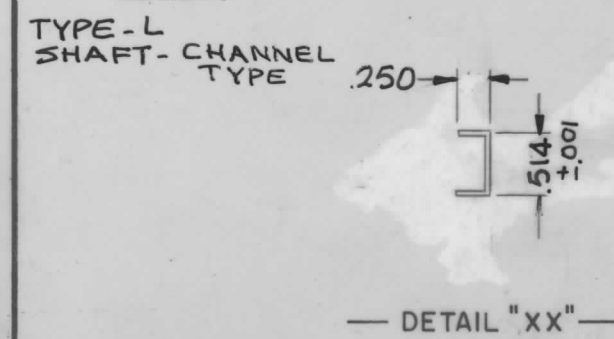
WAFERS:
 PHENOLIC, SECTIONS 5
 CERAMIC, SECTIONS —
 MYCALEX, SECTIONS —
 IMPREGNATION (IF REQ.) —

FINISH REQUIREMENTS:
 ARMY NAVY COMMERCIAL X
 SALT TEST (IF REQ.) —

HARDWARE, TO BE SUPPLIED BY MANUFACTURER:
 1 QUAN. 3/8 -32 NUTS 1/2 ACROSS FLATS
 MATERIAL STEEL PLATING CADMIUM
 1 QUAN. INTERNAL TOOTH LOCKWASHER
 MATERIAL STEEL PLATING CADMIUM

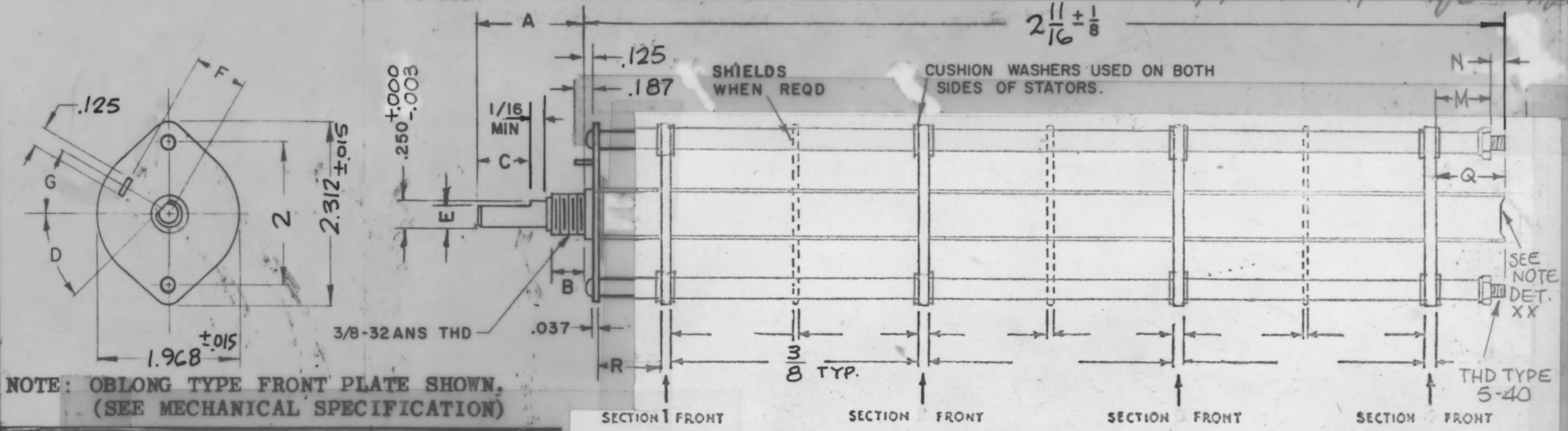
ELECTRICAL SPECIFICATIONS:
 MAXIMUM RATED VOLTAGE 110VAC
 MAXIMUM RATED CURRENT 5 AMP BREAK
 5 AMP CARRY

NOTE:
 FOR S401-13 ("F" TYPE) SWITCHES, THE SHAFT POSITION MUST BE SPECIFIED ON DETAIL "XX" BELOW.



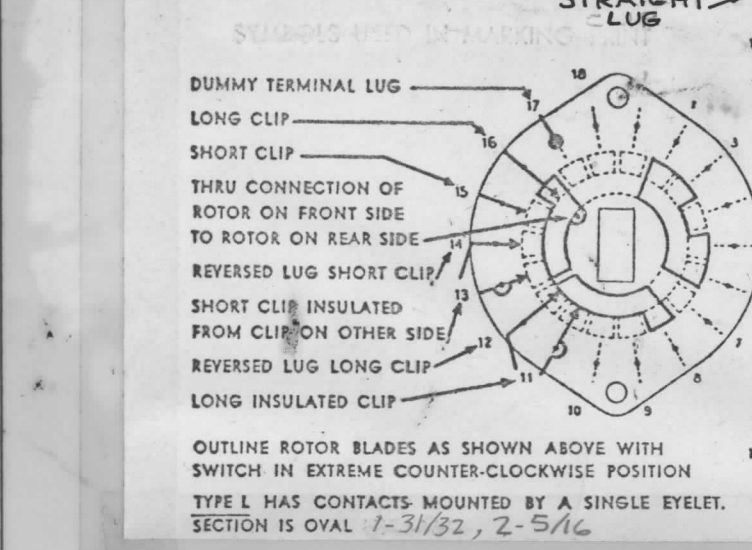
NOTES

REVISIONS					
SYM	DESCRIPTION	DATE	E.M.N. NO.	DRAFT	CHKD APPD
X	EXP. RELEASE	9-19-66	X	WJ	aa
X1	250 TOL WAS ±.002 ON DESC "D" TOL WAS ±2°, ADD ±2° & .010 TO "C" & "R"	11-3-66	VM	JC	JC
Ø	ORIGINAL RELEASE FOR PRODUCTION	1-9-67	—	WJ	—
A	REVISED & UPDATED	7/2/70	19931	—	—



NOTE: OBLONG TYPE FRONT PLATE SHOWN, (SEE MECHANICAL SPECIFICATION)

FRONT & REAR SECTIONS VIEWED FROM FRONT OR KNOB END OF SWITCH IN EXTREME COUNTERCLOCKWISE POSITION.



SYMBOLS USED IN MARKING PRINT

1	SWCB-3K	
Q'TY./UNIT	MODEL USED ON	ASS'Y. NO.
SCALE	CODE	
	C	

THE CONTENTS OF THIS DRAWING ARE THE EXCLUSIVE PROPERTY OF THE TECHNICAL MATERIEL CORP. ITS UNAUTHORIZED USE OR REPRODUCTION IN WHOLE OR IN PART IS STRICTLY FORBIDDEN.

MATERIAL	THE TECHNICAL MATERIEL CORP.			
FINISH	F. BUDETTI MAMARONECK, NEW YORK			
UNLESS OTHERWISE SPECIFIED DIMENSIONS ARE IN INCHES AND INCLUDE CHEMICALLY APPLIED OR PLATED FINISHES		TITLE		
		SWITCH, ROTARY, 18 POINT TYPE		
DECIMALS .X ± .05 .XX ± .01 .XXX ± .005	FRACTIONS ± 1/64 ANGLES ± 0° 30'	DRAWN DATE 9-19-66	FINAL APPROVAL DATE 1/9/67	
TOLERANCES		ELECT. DES. DATE	MECH. DES. DATE	
		SW438		
		SHEET		
		REV. LTR.		