

DESG.	DIMENSION	TOL.	REMARK
A	.875	±.015	SHAFT LG. FROM MTG. SURFACE
B	.375	±.005	BUSH. LG.
C	NONE	±.015	FLAT LG. (IF REQ.)
D	NONE	±2°	FLAT ANGLE (IF REQ.)
E	NONE	±.002	FLAT (IF REQUIRED)
F	.531	±.010	KEY LOCATION (IF REQ.)
G	0°		KEY LOCATION (IF REQ.)
M	.156	±.010	
N	.125	±.093	REAR SCR. EXT.
Q	.125	±.031	REAR SHAFT EXT.
R	.375		1st SEC. SPACING

TMC PART NUMBER: **SW-437** STAMP ON FRONT PLATE
 FRONT PLATE SHAPE: ROUND X OR OBLONG
 MECHANICAL SPECIFICATIONS:

NUMBER OF SECTIONS- 1
 NUMBER OF POSITIONS- 6
 ANGLE OF THROW- 30°

CONTACTS:
 SHORTING TYPE, SECTIONS _____
 NON SHORTING TYPE, SECTIONS _____
 SILVER PLATED BRASS, SECTIONS 1
 SILVER ALLOY, SECTIONS _____

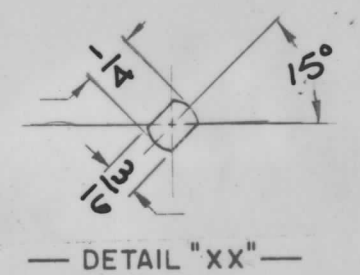
WAFERS:
 BAKELITE, SECTIONS _____
 CERAMIC, SECTIONS _____
 MYCALEX, SECTIONS 1
 IMPREGNATION (IF REQ.) _____

FINISH REQUIREMENTS:
 ARMY _____ NAVY _____ COMMERCIAL X
 SALT TEST (IF REQ.) _____

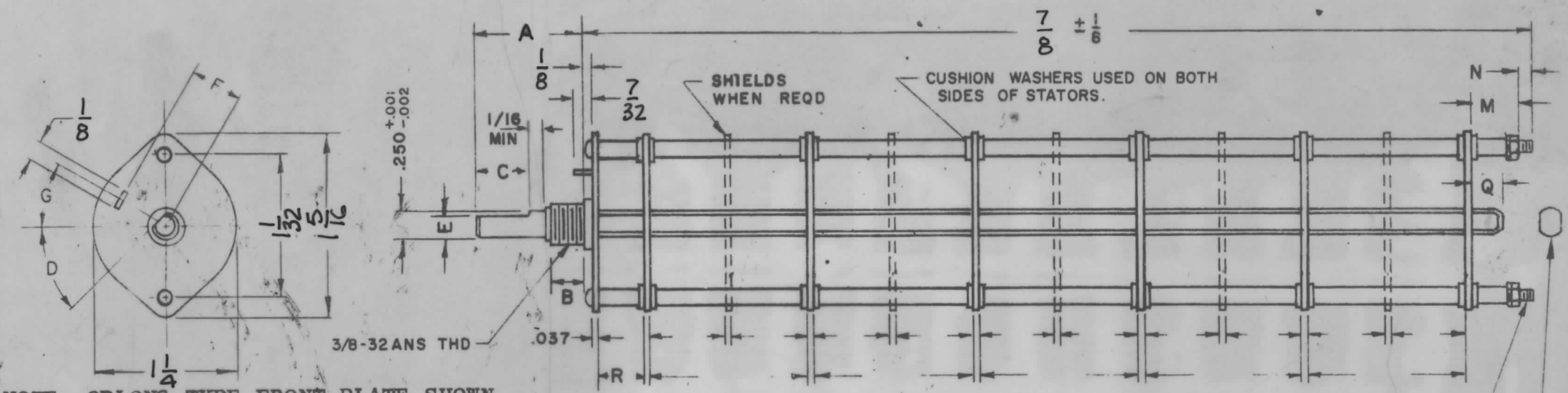
HARDWARE, TO BE SUPPLIED BY MANUFACTURER:
1 QUAN. 3/8 -32 NUTS 1/2 ACROSS FLATS
 MATERIAL STEEL PLATING CADMIUM
1 QUAN. 3/8 INTERNAL TOOTH LOCKWASHER
 MATERIAL STEEL PLATING CADMIUM

ELECTRICAL SPECIFICATIONS:
 MAXIMUM RATED VOLTAGE _____
 MAXIMUM RATED CURRENT _____

NOTE:
 FOR S401-13 ("F" TYPE) SWITCHES, THE SHAFT POSITION MUST BE SPECIFIED ON DETAIL "XX" BELOW.

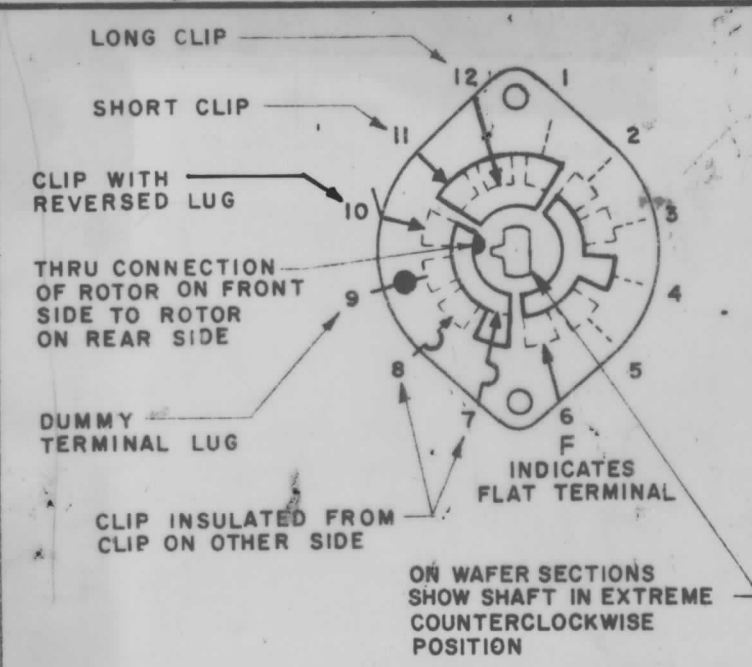


NOTES



NOTE: OBLONG TYPE FRONT PLATE SHOWN, (SEE MECHANICAL SPECIFICATION)

FRONT AND REAR SECTIONS VIEWED FROM FRONT OR KNOB END OF SWITCH IN EXTREME COUNTERCLOCKWISE POSITION. SEE NOTE (DET. "XX")

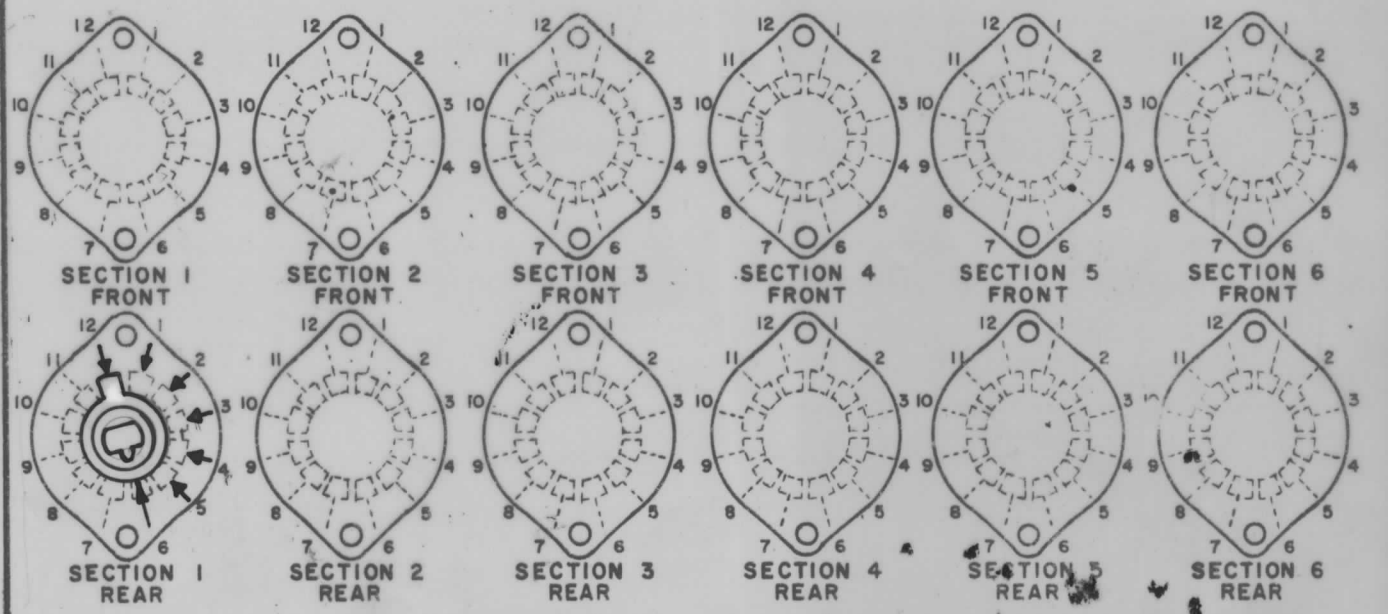


SYMBOLS USED IN MARKING PRINT

1	AX-646	
1	AX-633	
Q'TY./UNIT	MODEL USED ON	ASS'Y. NO.
SCALE	CODE	
	C	

THE CONTENTS OF THIS DRAWING ARE THE EXCLUSIVE PROPERTY OF THE TECHNICAL MATERIEL CORP. ITS UNAUTHORIZED USE OR REPRODUCTION IN WHOLE OR IN PART IS STRICTLY FORBIDDEN.

REVISIONS						
SYM	DESCRIPTION	DATE	E.M.N. NO.	DRAFT	CHKD	APPD
X	EXP. RELEASE	9-19-66	X			
Ø	ORIGINAL RELEASE FOR PRODUCTION	9/29/69				



SWITCH, ROTARY - 12 POINT TYPE

MATERIAL	THE TECHNICAL MATERIEL CORP. MAMARONECK, NEW YORK				
FINISH	TITLE SWITCH, ROTARY				
UNLESS OTHERWISE SPECIFIED DIMENSIONS ARE IN INCHES AND INCLUDE CHEMICALLY APPLIED OR PLATED FINISHES	DRAWN	DATE	FINAL APPROVAL	DATE	
	CHECKED	DATE		DATE	
DECIMALS .X ± .05 .XX ± .01 .XXX ± .005	TOLERANCES	FRACTIONS ± 1/64 ANGLES ± 0° 30'	ELECT. DES.	DATE	
			MECH. DES.	DATE	
			SW437		
			SHEET		REV. LTR.