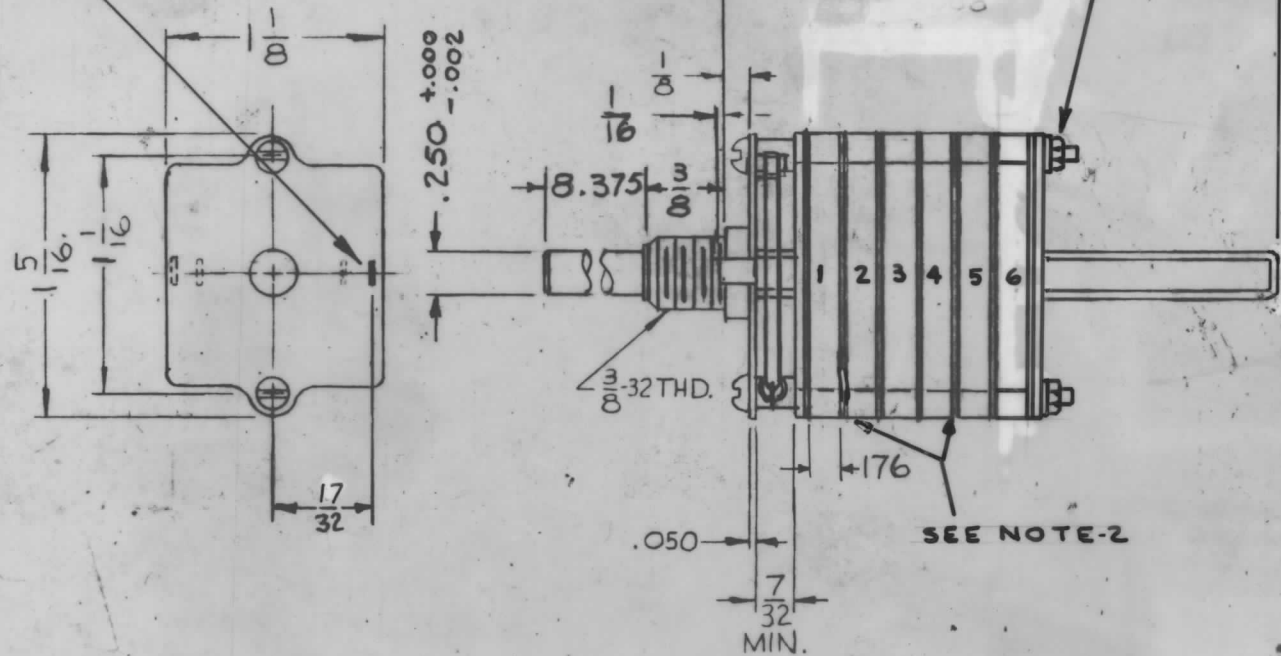


STANDARD POSITION,
ALL OTHERS OPTIONAL.
SHOW POSITION
DESIRED IN SOLID BLACK.



A
SW434

REVISIONS

SYM	DESCRIPTION	DATE	E.M.N. NO.	DRAFT	CHKD	APPR
Ø	ORIGINAL RELEASE FOR PRODUCTION	9/23/66	Ø	CV		
A	17/32 WAS 7/32 DIM. & NO. OF SECT. 6 WAS 5 (3 PLACES)	2.1.68	18753	H.S.		OP

TMC PART NUMBER SW434 STAMP ON FRONT PLATE

FRONT PLATE SHAPE: RECTANGULAR

MECHANICAL SPECIFICATIONS:

NUMBER OF SECTIONS- 6 360° ROTATION
 NUMBER OF POSITIONS- 8 NO STOPS
 ANGLE OF THROW- 30°

CONTACTS:

SHORTING TYPE, SECTIONS _____
 NON SHORTING TYPE, SECTIONS 1 THRU 6
 SILVER PLATED BRASS, SECTIONS 1 THRU 6
 SILVER ALLOY, SECTIONS _____

WAFERS:

WHITE: GLASS/ALKYD 1 THRU 6
 CERAMIC, SECTIONS _____
 MYCALEX, SECTIONS _____
 IMPREGNATION (IF REQ.) _____

FINISH REQUIREMENTS:

ARMY NAVY COMMERCIAL X
 SALT TEST (IF REQ.) _____

HARDWARE, TO BE SUPPLIED BY MANUFACTURER:

1 QUAN. 3/8-32 NUTS 1/2 ACROSS FLATS
 MATERIAL BRASS PLATING NICKEL
 1 QUAN. 3/8 INTERNAL TOOTH LOCKWASHER
 MATERIAL BRONZE PLATING NICKEL

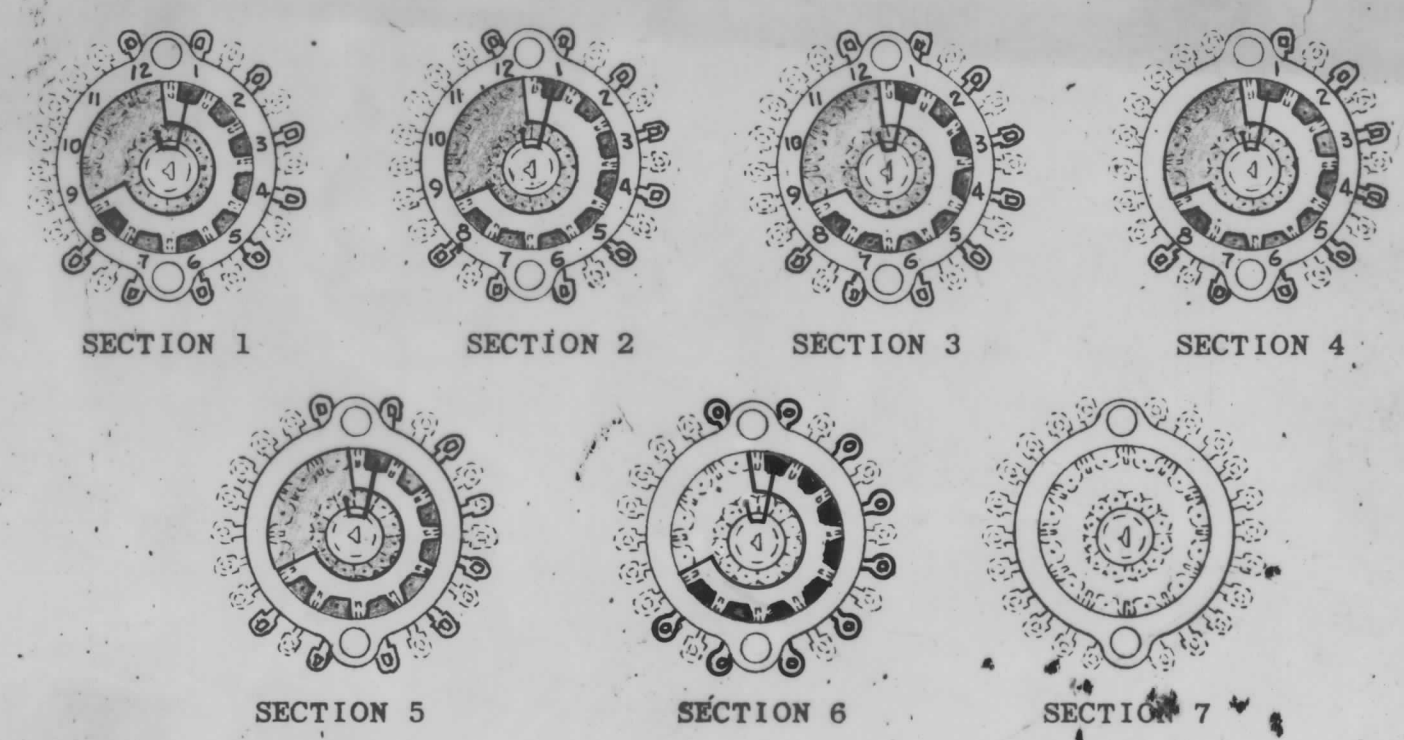
ELECTRICAL SPECIFICATIONS:

MAXIMUM RATED VOLTAGE 28VDC 115AC
 MAXIMUM RATED CURRENT 1ADC 1-1/2AC

STANDARD DRAWING

NOTE:

- 1-SHIELD ON FRONT & ON REAR.
- 2-SHIELDS BETWEEN NO.'S (1) & (2) AND (4) & (5)



SMEA-1	
Q'TY./UNIT	MODEL USED ON
SCALE	ASS'Y. NO.
NONE	C S401-175 (211)

THE CONTENTS OF THIS DRAWING ARE THE EXCLUSIVE PROPERTY OF THE TECHNICAL MATERIEL CORP. ITS UNAUTHORIZED USE OR REPRODUCTION IN WHOLE OR IN PART IS STRICTLY FORBIDDEN.

REQ'D.	ITEM	PART NUMBER	DESCRIPTION	SYMBOL
R. HAY. LIST OF MATERIAL				
MATERIAL		THE TECHNICAL MATERIEL CORP. MAMARONECK, NEW YORK		
FINISH		TITLE SWITCH, ROTARY		
UNLESS OTHERWISE SPECIFIED' DIMENSIONS ARE IN INCHES AND INCLUDE CHEMICALLY APPLIED OR PLATED FINISHES		DRAWN	DATE	FINAL APPROVAL
DECIMALS		#LA		
FRACTIONS		CHECKED	DATE	
.X ± .05		H.S.	9/20/66	
.XX ± .01		ELECT. DES.	DATE	
.XXX ± .005		MECH. DES.	DATE	
TOLERANCES		DATE		SW434
± 1/64				A
ANGLES				
± 0° 30'				
SHEET				REV LTR.