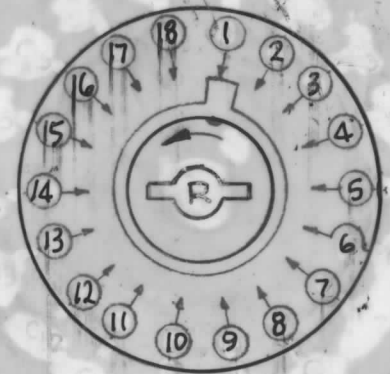
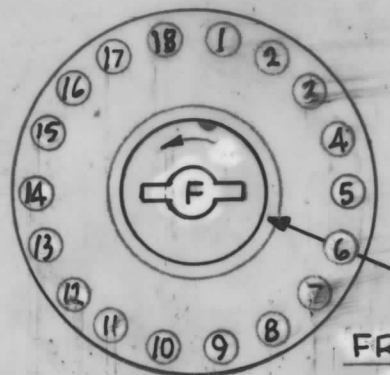


1P18T LOAD CIRCUIT DECK



A
SW428

REVISIONS

SYM	DESCRIPTION	DATE	E.M.N. NO.	DRAFT	CHKD	APPD
A	REV. & UPDATED	5-18-68	18824	HEL	[Signature]	FB

SPECIFICATIONS

MECHANICAL:

NO. OF SECTIONS: 10 1P18T DECKS PLUS 1 CONTROL CKT DECK
 NO. OF POSITIONS: 18
 ANGLE OF THROW: 20°
 CONTACT MATERIAL: SOLID SILVER ALLOY
 CONTACT TYPE: SECTION 1 SPECIAL, SECT. 2 THRU 11 NON SHORTING
 WAFER MATERIAL: BAKELITE
 FINISH: 50 HOUR SALT SPRAY
 OPERATING TEMP.: -55°C TO +80°C

ELECTRICAL:

CURRENT RATING: CARRY 10 AMPS RES. MAXIMUM
 BREAK @24VDC: 5 AMPS RES. MAXIMUM
 BREAK @115VDC: 1 AMP RES. MAXIMUM
 DIELECTRIC STRENGTH: 1000V, CLIP TO CLIP, 500 V INSULATED BACK TO BACK CLIPS.

COIL SPECIFICATIONS:

SOLENOID SIZE: 5B LEFT HAND ROTATION
 COIL RES.: @20°C: 7.72±10%
 VOLTAGE: 28VDC ±10%
 MAXIMUM COIL TEMPERATURE: 120°C
 COIL TO CASE DIELECTRIC TEST: 1200 VRMS

- NOTE:
- VIEW WAFERS FROM SOLENOID END OF SWITCH.
 - REAR SIDE IS VIEWED AS IF LOOKING THROUGH WAFER, FROM SOLENOID END.
 - ORIENTATION OF WAFER IS WITH PIN 1 IN THE 1 O'CLOCK POSITION AS VIEWED FROM THE SOLENOID END WITH SOLENOID CONNECTING WIRES OR TERMINALS FACING DOWN.
 - ROTATION IN DIRECTION OF ARROW VIEWED FROM SOLENOID END.
 - WAFERS SHOWN IN NO. 1 POSITION.

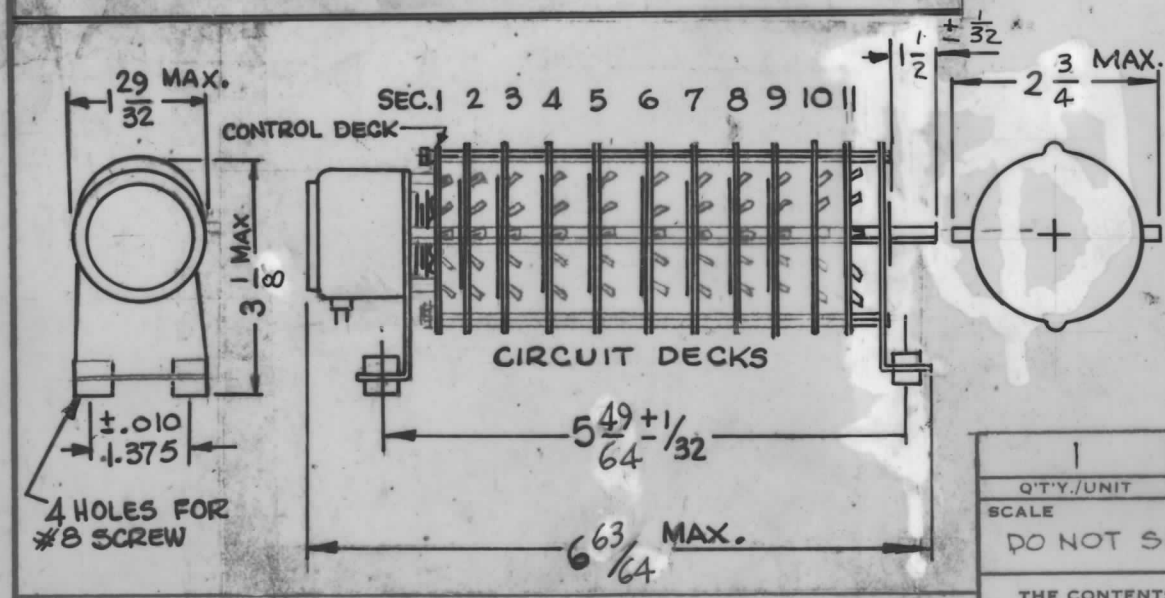
CLIP DESIGNATIONS

LONG SHORT INSULATED DUMMY



STANDARD (NO DESIGNATION (60° BEND))

THRU CONNECTION



NOTES

1	SWCA-3K	A5269
Q'TY./UNIT	MODEL USED ON	ASS'Y. NO.
SCALE	CODE	S401-281 (170-112-001)
DO NOT SCALE	C	

THE CONTENTS OF THIS DRAWING ARE THE EXCLUSIVE PROPERTY OF THE TECHNICAL MATERIEL CORP. ITS UNAUTHORIZED USE OR REPRODUCTION IN WHOLE OR IN PART IS STRICTLY FORBIDDEN.

REQ'D.	ITEM	PART NUMBER	DESCRIPTION	SYMBOL
F. BUDETTI LIST OF MATERIAL				
MATERIAL			THE TECHNICAL MATERIEL CORP. MAMARONECK, NEW YORK	
FINISH			TITLE	
			SWITCH, ROTARY, SOLENOID	
UNLESS OTHERWISE SPECIFIED DIMENSIONS ARE IN INCHES AND INCLUDE CHEMICALLY APPLIED OR PLATED FINISHES			DRAWN <i>WFW</i>	DATE 5-1-65
			CHECKED <i>[Signature]</i>	DATE 5/25/65
			ELECT. DES. <i>[Signature]</i>	DATE
			MECH. DES. <i>[Signature]</i>	DATE 5/25/65
DECIMALS .X ± .05 .XX ± .01 .XXX ± .005			FRACTIONS ± 1/64 ANGLES ± 0° 30'	
TOLERANCES			FINAL APPROVAL <i>[Signature]</i> DATE 5/19/67	
			SW428	
			SHEET	
			REV. LTR. A	