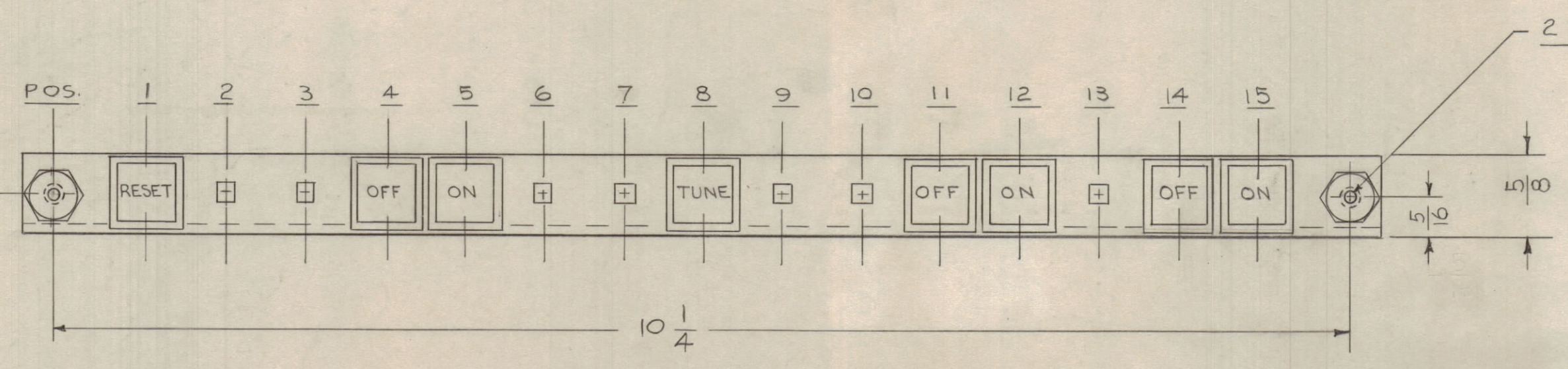
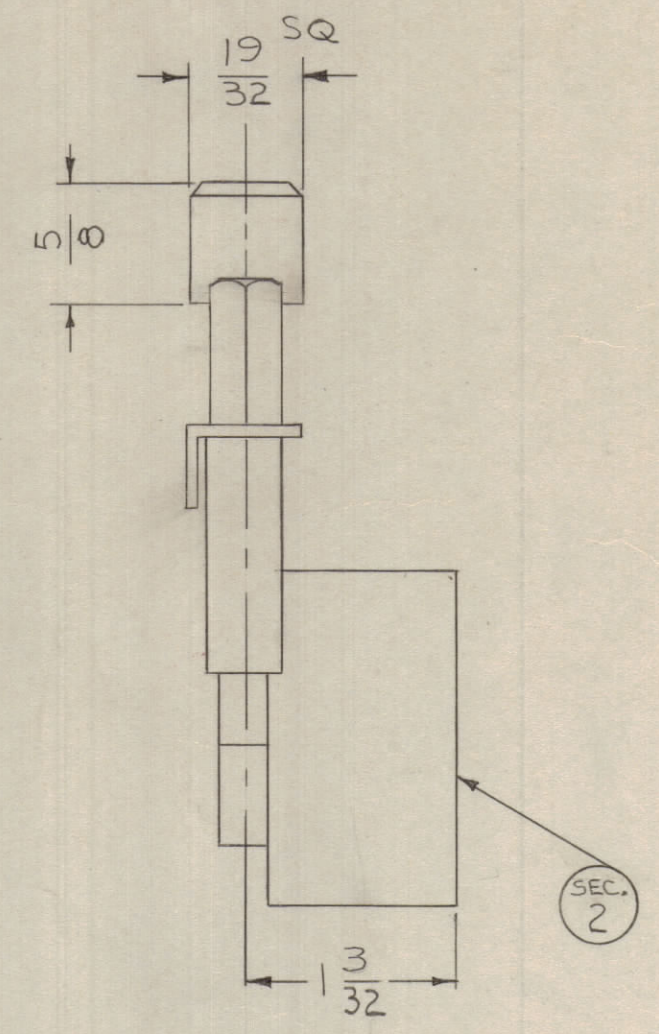
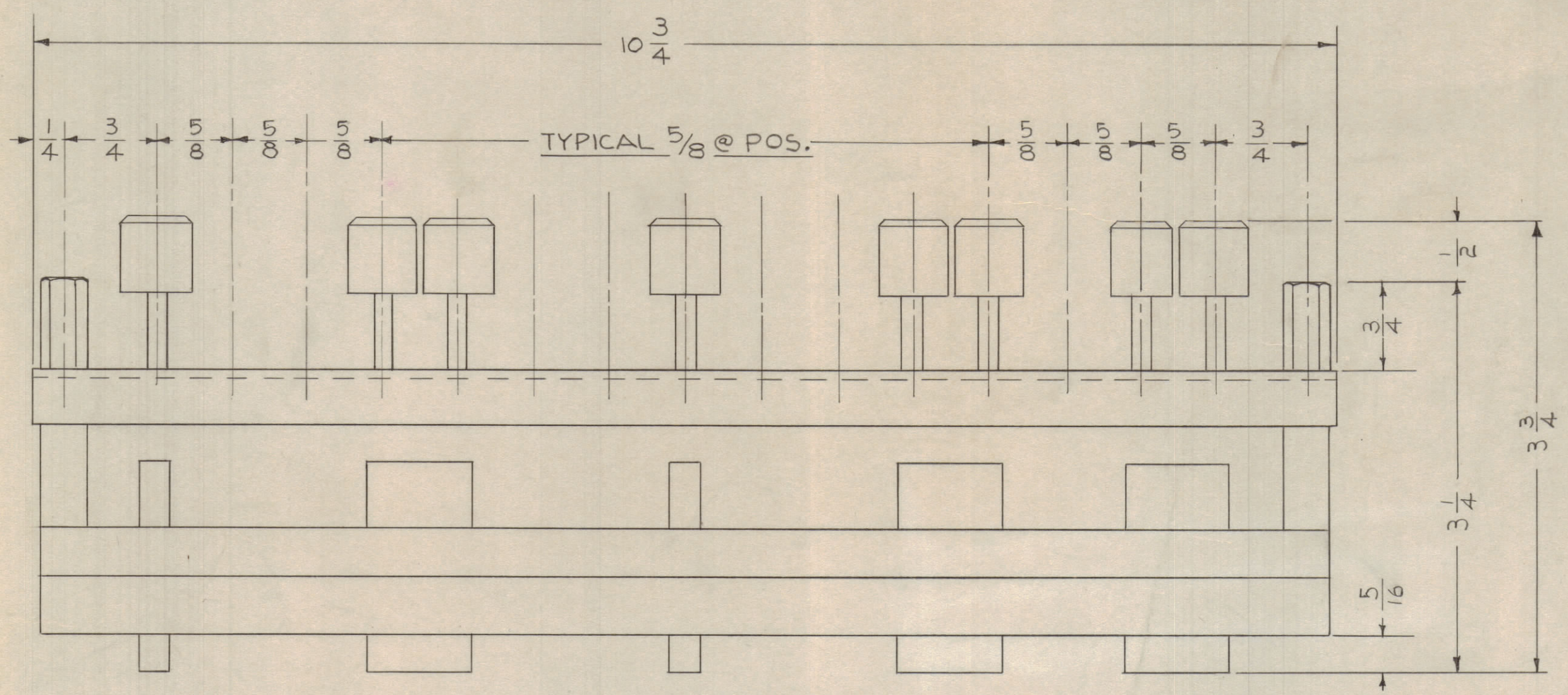


REVISIONS							
ZONE	SYM	DESCRIPTION	DATE	E.M.N. NO.	DRAFT	CHKD	APPD
	Q	ORIGINAL RELEASE FOR PRODUCTION	8-16-66	Q	RME		



- NOTES:
- CONTACTS : 5A POS 1, SEC. 2
2A POS 4 & 8 SEC. 2
3A POS 5, 11, & 14 SEC. 2
4A POS 12 & 15 SEC. 2
 - POSITIONS : 2, 3, 6, 7, 9, 10, & 13 WITHOUT PLUNGERS.
 - BUTTONS : WHITE
 - ENGRAVING : HORIZONTAL (AS SHOWN)
 - TOP "A" CONTACTS TO MAKE AFTER OTHER CONTACTS ARE MADE.
 - MOMENTARY ACTION.



SW 425

Q'TY./UNIT	MODEL USED ON	ASS'Y. NO.
SCALE	CODE	
	S401-365	(10A-8363-759)

NOTES

THE CONTENTS OF THIS DRAWING ARE THE EXCLUSIVE PROPERTY OF THE TECHNICAL MATERIEL CORP. ITS UNAUTHORIZED USE OR REPRODUCTION IN WHOLE OR IN PART IS STRICTLY FORBIDDEN.

REQ'D.	ITEM	PART NUMBER	DESCRIPTION	SYMBOL
EATON LIST OF MATERIAL				
MATERIAL		THE TECHNICAL MATERIEL CORP. MAMARONECK, NEW YORK		
FINISH		TITLE SWITCH, MULTIPLE POSITION PUSHBUTTON		
DRAWN	RME	DATE	8-15-66	FINAL APPROVAL
CHECKED	[Signature]	DATE	8-16-66	[Signature]
ELECT. DES.	[Signature]	DATE	8/16/66	
MECH. DES.	[Signature]	DATE	8/16/66	
SHEET				REV. LTR.