

STANDARD DRAWING

DESG.	DIMENSION	TOL.	REMARK
A	1.375	±.015	SHAFT LG. FROM MTG. SURFACE
B	.250	±.005	BUSH. LG.
C	#	±.015	FLAT LG. (IF REQ.)
D	#	±2°	FLAT ANGLE (IF REQ.)
E	#	±.002	FLAT (IF REQUIRED)
F	.631	±.010	KEY LOCATION (IF REQ.)
G	180°		KEY LOCATION (IF REQ.)
M	.187	±.010	
N	.125	±.093	REAR SCR. EXT.
Q	.187	±.031	REAR SHAFT EXT.
R	1/2		1st SEC. SPACING

TMC PART NUMBER: SW424-^{W/LATEST REVISION LETTER} STAMP ON FRONT PLATE
 FRONT PLATE SHAPE: OPTIONAL OR OBLONG
 MECHANICAL SPECIFICATIONS:
 NUMBER OF SECTIONS- 1
 NUMBER OF POSITIONS- 8
 ANGLE OF THROW- 30°
 CONTACTS:
 SHORTING TYPE, SECTIONS _____
 NON SHORTING TYPE, SECTIONS _____
 SILVER PLATED BRASS, SECTIONS _____
 SILVER ALLOY, SECTIONS _____

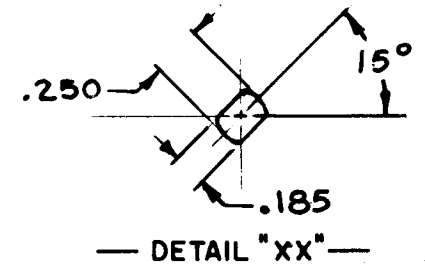
WAFERS:
 BAKELITE, SECTIONS _____
 CERAMIC, SECTIONS _____
 MYCALEX, SECTIONS _____
 IMPREGNATION (IF REQ.) _____

FINISH REQUIREMENTS:
 ARMY _____ NAVY COMMERCIAL _____
 SALT TEST (IF REQ.) 200HRS _____

HARDWARE, TO BE SUPPLIED BY MANUFACTURER:
 1 QUAN. 3/8 -32 NUTS 1/2 ACROSS FLATS
 MATERIAL ST. STEEL PLATING PASSIVATE
 1 QUAN. 3/8 INTERNAL TOOTH LOCKWASHER
 MATERIAL ST. STEEL PLATING PASSIVATE

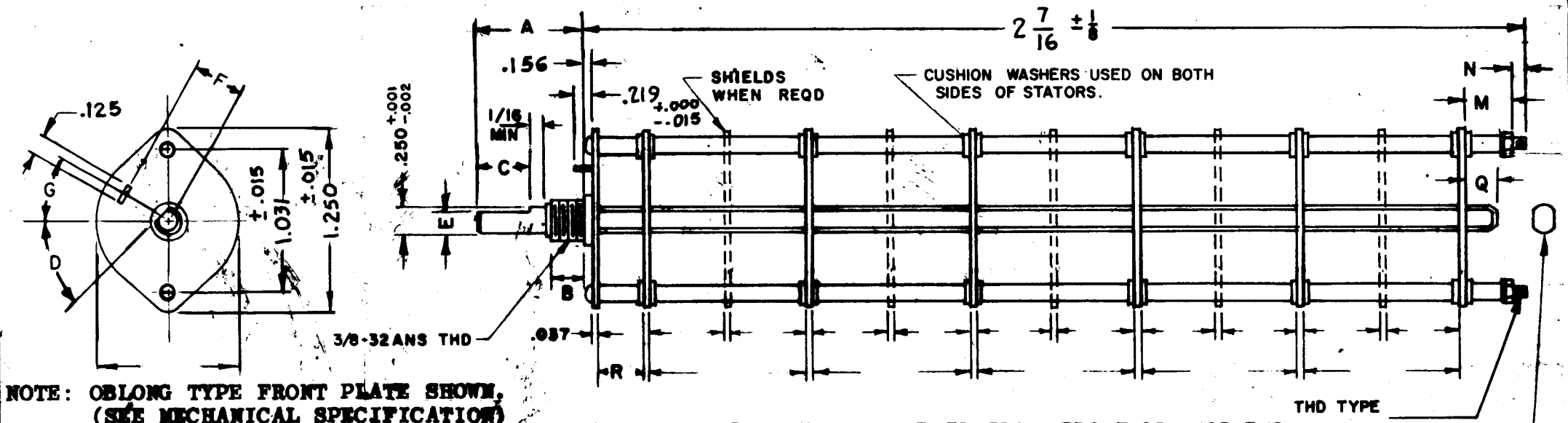
ELECTRICAL SPECIFICATIONS:
 MAXIMUM RATED VOLTAGE 115 VAC
 MAXIMUM RATED CURRENT 5 AMP CARRY
 1 AMP BREAK

NOTE:
 FOR S401-13 ("F" TYPE) SWITCHES, THE SHAFT POSITION MUST BE SPECIFIED ON DETAIL "XX" BELOW.



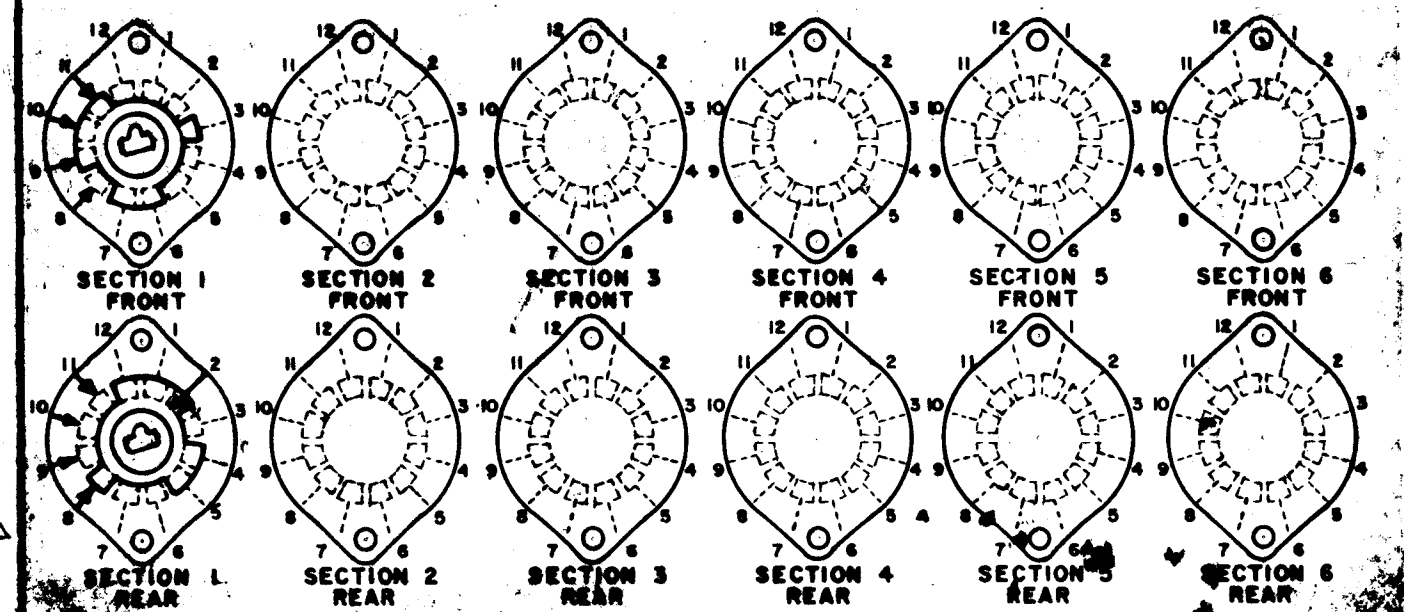
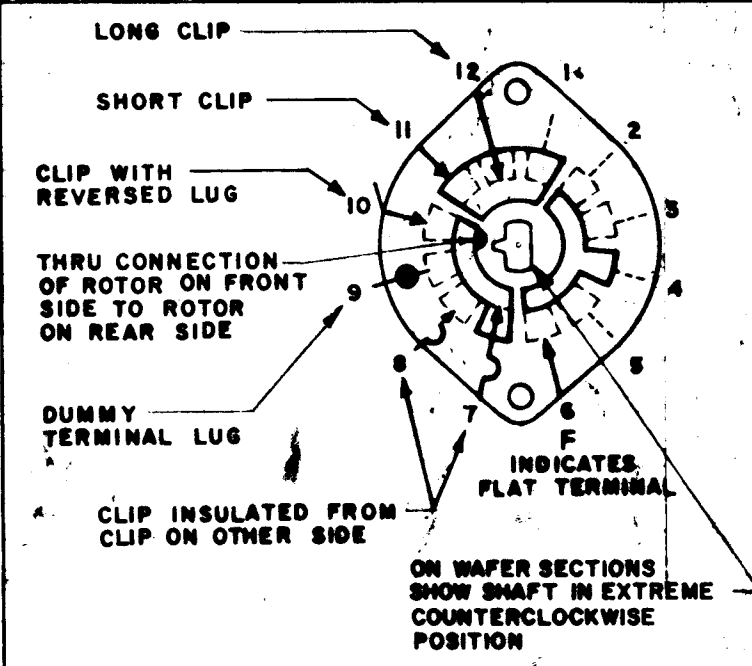
NOTES

REVISIONS						
SYM	DESCRIPTION	DATE	E.M.N. NO.	DRAFT	CHKD	APPD
Ø	ORIGINAL RELEASE FOR PRODUCTION	5/17/66	Ø	C.V		JG
A	ADD S401 & KEYING SLOT, FR. PL. SHAPE WAS ROUND	8/29/66	16816	CE D		MM



NOTE: OBLONG TYPE FRONT PLATE SHOWN, (SEE MECHANICAL SPECIFICATION)

FRONT AND REAR SECTIONS VIEWED FROM FRONT OR KNOB END OF SWITCH IN EXTREME COUNTERCLOCKWISE POSITION. SEE NOTE (DET. "XX")



SYMBOLS USED IN MARKING PRINT

SWITCH, ROTARY - 12 POINT TYPE

MATERIAL		THE TECHNICAL MATERIEL CORP. EATON MAMARONECK, NEW YORK			
FINISH		TITLE SWITCH, ROTARY			
UNLESS OTHERWISE SPECIFIED, DIMENSIONS ARE IN INCHES AND INCLUDE CHEMICALLY APPLIED OR PLATED FINISHES		DRAWN	DATE	FINAL APPROVAL	DATE
DECIMALS .X ± .05 .XX ± .01 .XXX ± .005		G.D.L	4-6-66	<i>F.P. Eaton</i>	5/16/66
FRACTIONS ± 1/64		CHECKED	DATE		
TOLERANCES ANGLES ± 9° 30'		<i>CP</i>	4-18-66		
		ELECT. DES.	DATE		
		<i>R</i>	5/17/66		
		MECH. DES.	DATE		
		<i>B. Barman</i>	5/16/66		
		SHEET		SW 424	A
				REV. LVL.	

QTY./UNIT	MODEL USED ON	ASS'Y. NO.
SCALE	CODE	S401-281
THE CONTENTS OF THIS DRAWING ARE THE EXCLUSIVE PROPERTY OF THE TECHNICAL MATERIEL CORP. ITS UNAUTHORIZED USE OR REPRODUCTION IN WHOLE OR IN PART IS STRICTLY FORBIDDEN.		