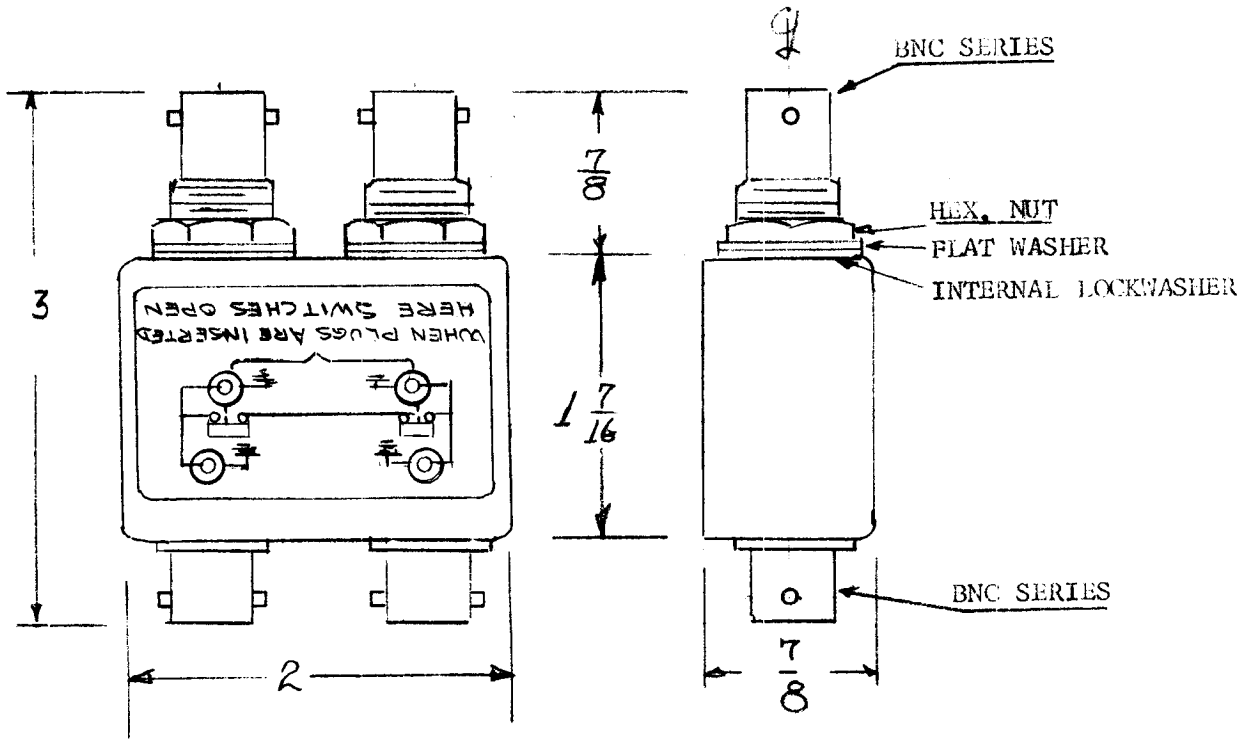


REQ. PER UNIT 16	USED ON			SW 422	Ø
	MODEL SW 422	ASS'Y. NO. A-4451	DATE 1-28-65		



NOTES:
CASE -
 MATERIAL: BRASS
 FINISH: TMC SMOOTH
 GREY ENAMEL
CONNECTORS -
 FINISH:
 BODIES - RHODIUM
 FLASH
 CONTACTS - GOLD
 FLASH

SYM	DESCRIPTION	DATE	CH. NO.	DRAFTS	CHECKER	ENG. APP.	REQ. ITEM	PART NO.	DESCRIPTION	SYMBOL	
Ø	ORIGINAL RELEASE FOR PRODUCTION	5/24/66		CR		JHE			THE TECHNICAL MATERIEL CORP. MAMARONECK, NEW YORK SWITCH JACK, ASSEMBLY DUAL BNC TO DUAL BNC	Ø	
								STOCK SIZE			
								SEE NOTES			
								MATERIAL			
UNLESS OTHERWISE SPECIFIED DIMENSIONS ARE IN INCHES AND INCLUDE CHEMICALLY APPLIED OR PLATED FINISHES		SCALE		AK					DRAWN: <i>[Signature]</i> CHECKED: <i>[Signature]</i> FINAL APPROVAL: <i>[Signature]</i>		
DECIMALS: .X ± .05 .XX ± .01 .XXX ± .005	TOLERANCES	FRACTIONS ± 1/64 ANGLES ± 0° 30'	CODE	AK					TYPE & TEMPER HEAT TREAT. SPEC. DRAWN CHECKED FINAL APPROVAL	SW 422	Ø
									FINISH & SPEC. NO.	ELEC. DES. APP.	MECH. DES. APP.

ML 28 5/29/66