

STANDARD DRAWING

DESG.	DIMENSION	TOL.	REMARK
A	3/4	±.015	SHAFT LG. FROM MTG. SURFACE
B	3/8	±.005	BUSH. LG.
C	—	±.015	FLAT LG. (IF REQ.)
D	—	±2°	FLAT ANGLE (IF REQ.)
E	—	±.002	FLAT (IF REQUIRED)
F	—	±.010	KEY LOCATION (IF REQ.)
G	—	—	KEY LOCATION (IF REQ.)
M	—	±.010	—
N	—	±.093	REAR SCR. EXT.
Q	—	±.031	REAR SHAFT EXT.
R	5/16	—	1st SEC. SPACING

TMC PART NUMBER: SW-420 STAMP ON FRONT PLATE
 FRONT PLATE SHAPE: ROUND OR OBLONG

MECHANICAL SPECIFICATIONS:
 NUMBER OF SECTIONS- 3
 NUMBER OF POSITIONS- 5
 ANGLE OF THROW- 30°

CONTACTS:
 SHORTING TYPE, SECTIONS 1 THRU 3
 NON SHORTING TYPE, SECTIONS
 SILVER PLATED BRASS, SECTIONS
 SILVER ALLOY, SECTIONS 1 THRU 3 (TYPE-2)

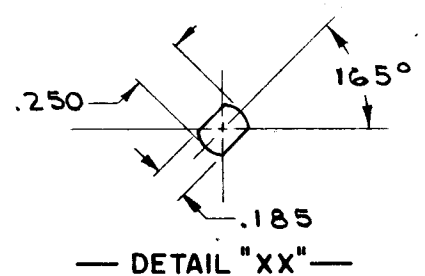
WAFERS:
 BAKELITE, SECTIONS
 CERAMIC, SECTIONS
 MYCALEX, SECTIONS
 IMPREGNATION (IF REQ.)

FINISH REQUIREMENTS:
 ARMY NAVY COMMERCIAL
 SALT TEST (IF REQ.) 50 HR.

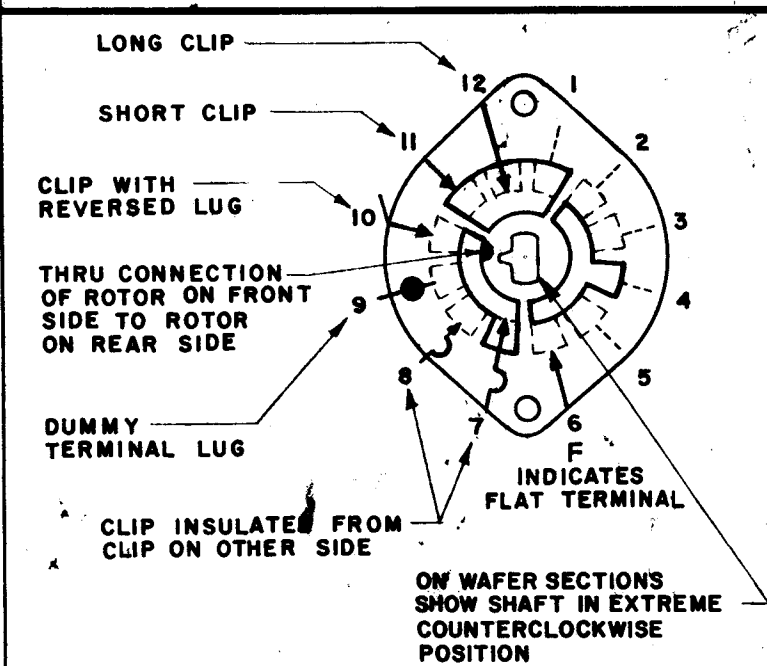
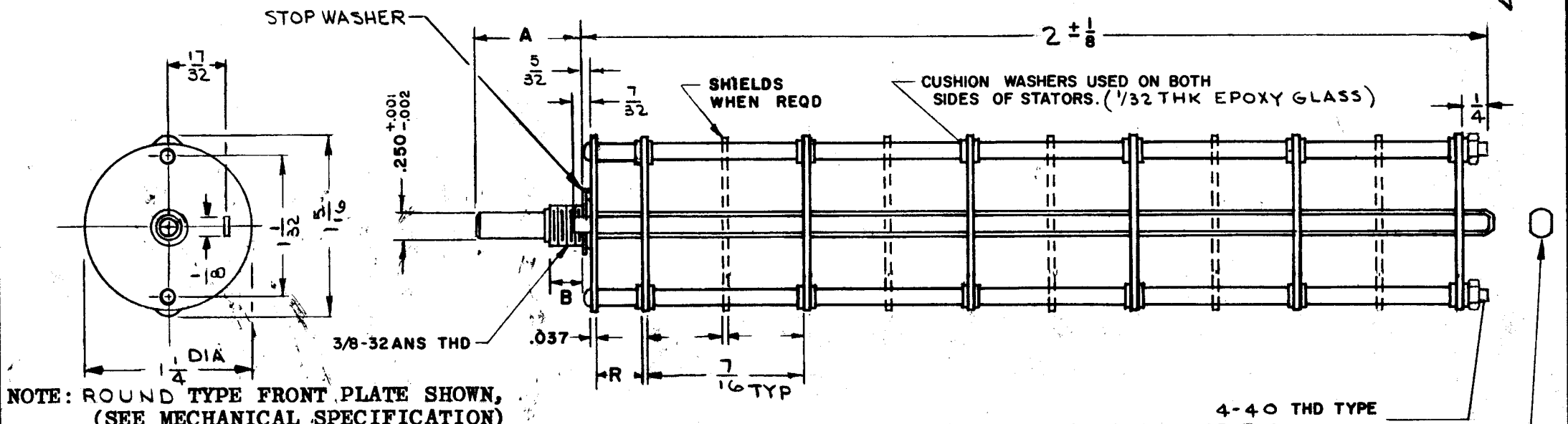
HARDWARE, TO BE SUPPLIED BY MANUFACTURER:
 1 QUAN. 3/8-32 NUTS 1/2 ACROSS FLATS
 MATERIAL BRASS PLATING ZINC OR CADMIUM
 1 QUAN. 3/8 INTERNAL TOOTH LOCKWASHER
 MATERIAL STEEL PLATING CADMIUM

ELECTRICAL SPECIFICATIONS:
 MAXIMUM RATED VOLTAGE 110 VAC
 MAXIMUM RATED CURRENT 5A CARRY

NOTE:
 FOR S401-13 ("F" TYPE) SWITCHES, THE SHAFT POSITION MUST BE SPECIFIED ON DETAIL "XX" BELOW.



NOTES



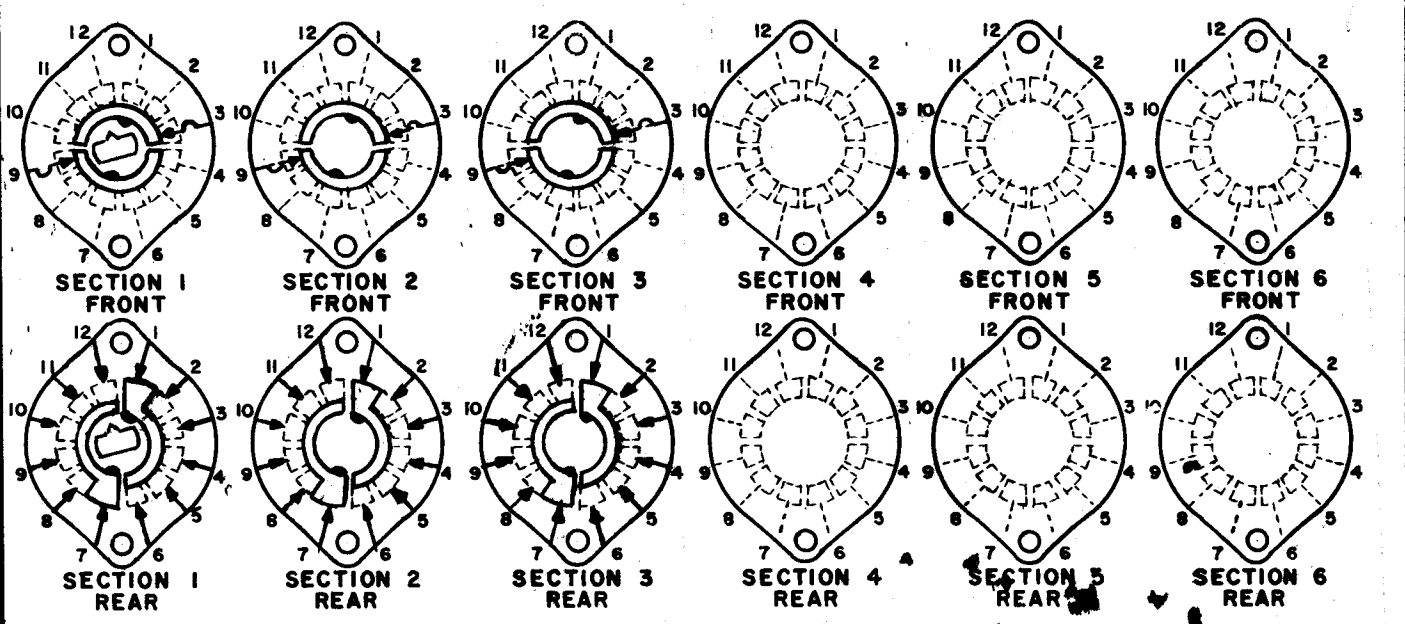
SYMBOLS USED IN MARKING PRINT

PURCHASING NOTES:
 1-FOR QUANTITIES OF MORE THAN 100 PCS, ORDER PER TMC PT. NO. & DWG SW420.
 2-FOR QUANTITIES OF LESS THAN 100 PCS, ORDER PER VENDERS PT. NO. BELOW.
 04-033-05-05-1-00-1-3c5-A

RTPH-		ASS'Y. NO.
Q'TY./UNIT	MODEL USED ON	ASS'Y. NO.
SCALE	CODE	S401-13 SEE NOTES 1 & 2
THE CONTENTS OF THIS DRAWING ARE THE EXCLUSIVE PROPERTY OF THE TECHNICAL MATERIEL CORP. ITS UNAUTHORIZED USE OR REPRODUCTION IN WHOLE OR IN PART IS STRICTLY FORBIDDEN.		

REVISIONS						
SYM	DESCRIPTION	DATE	E.M.N. NO.	DRAFT	CHKD	APPD
X1	NO. OF SECTIONS WAS 4; 2" TOT. LEN. WAS 3 3/16	1/10/66		JL		JL
Ø	VENDORS PT. NO. WAS 04-033-05-05-1-00-1-413-A	1/10/66		JL		JL
Ø	ORIGINAL RELEASE FOR PRODUCTION	1/10/66		JL		JL

FRONT AND REAR SECTIONS VIEWED FROM FRONT OR KNOB END OF SWITCH IN EXTREME COUNTERCLOCKWISE POSITION. SEE NOTE (DET. "XX")



FE. EATON SWITCH, ROTARY - 12 POINT TYPE

MATERIAL		THE TECHNICAL MATERIEL CORP. MAMARONECK, NEW YORK			
FINISH		TITLE SWITCH, ROTARY			
UNLESS OTHERWISE SPECIFIED DIMENSIONS ARE IN INCHES AND INCLUDE CHEMICALLY APPLIED OR PLATED FINISHES		DRAWN	DATE	FINAL APPROVAL	DATE
DECIMALS .X ± .05 .XX ± .01 .XXX ± .005		J.L.	1/4/66	JL	1/6/65
FRACTIONS ± 1/64 ANGLES ± 0° 30'		CHECKED	DATE	DATE	DATE
TOLERANCES		JL	1-9-66	SW420	Ø
ELECT. DES.		MECH. DES.	DATE	SHEET	REV. LTR.
			1/6/66		