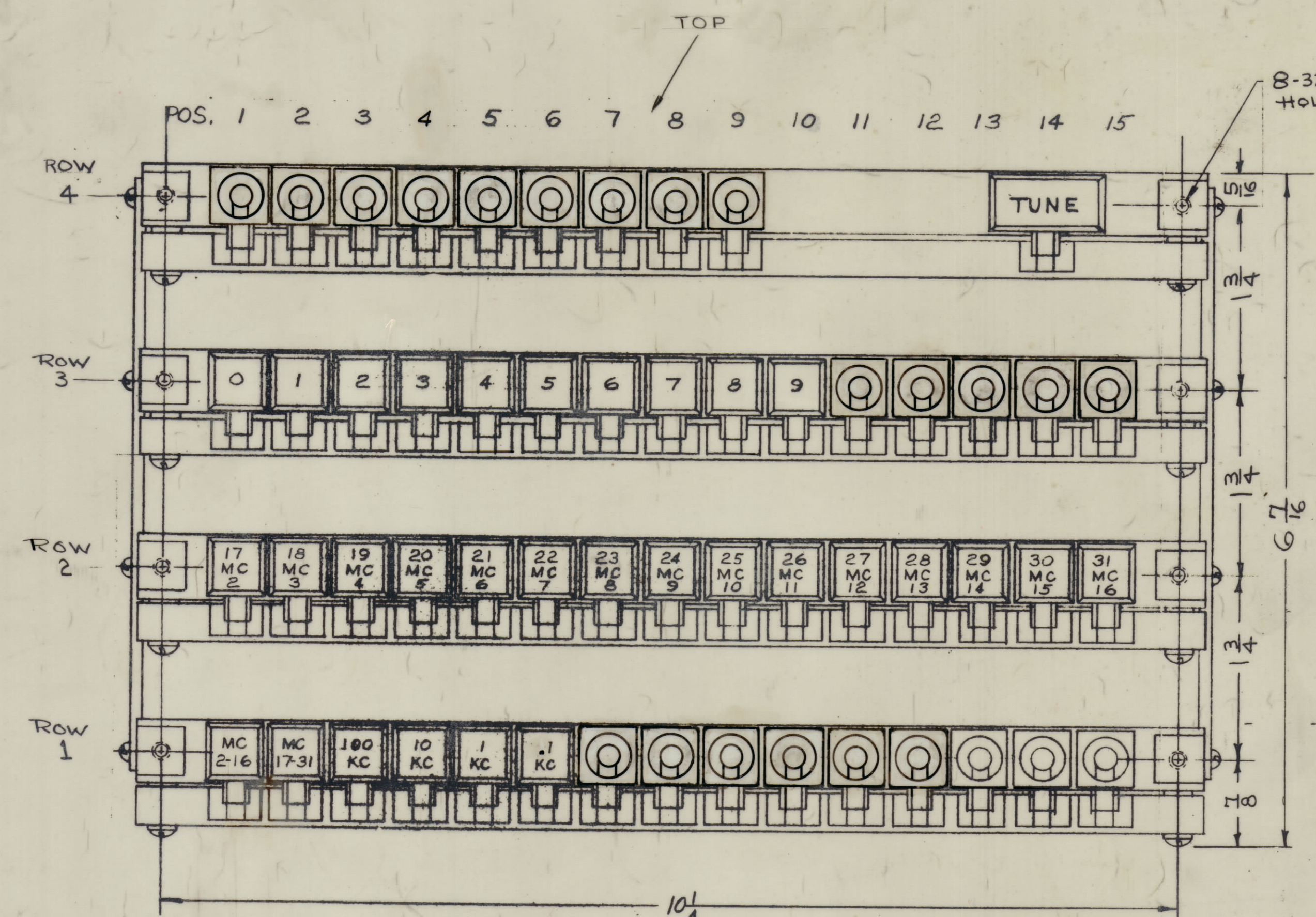
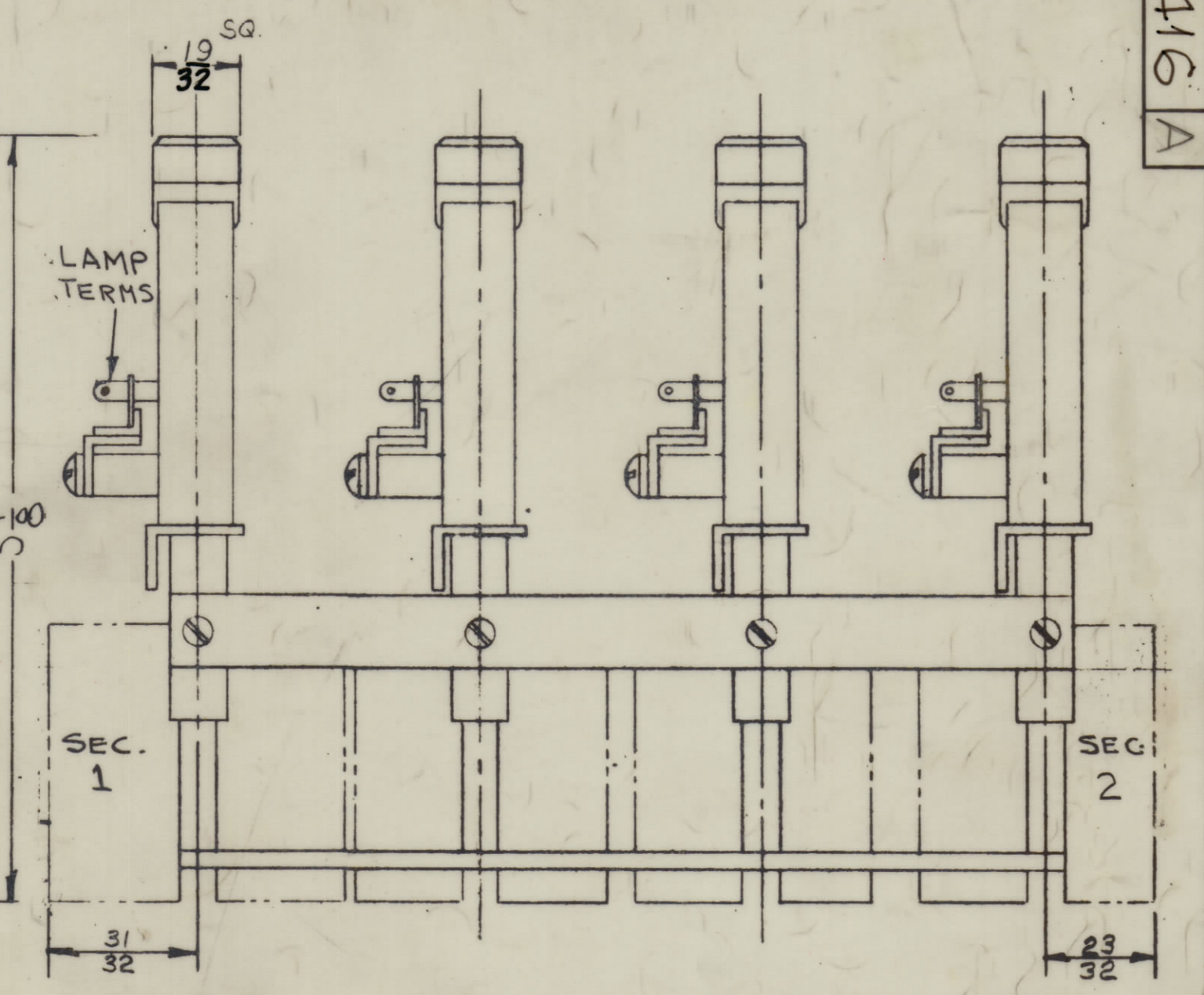
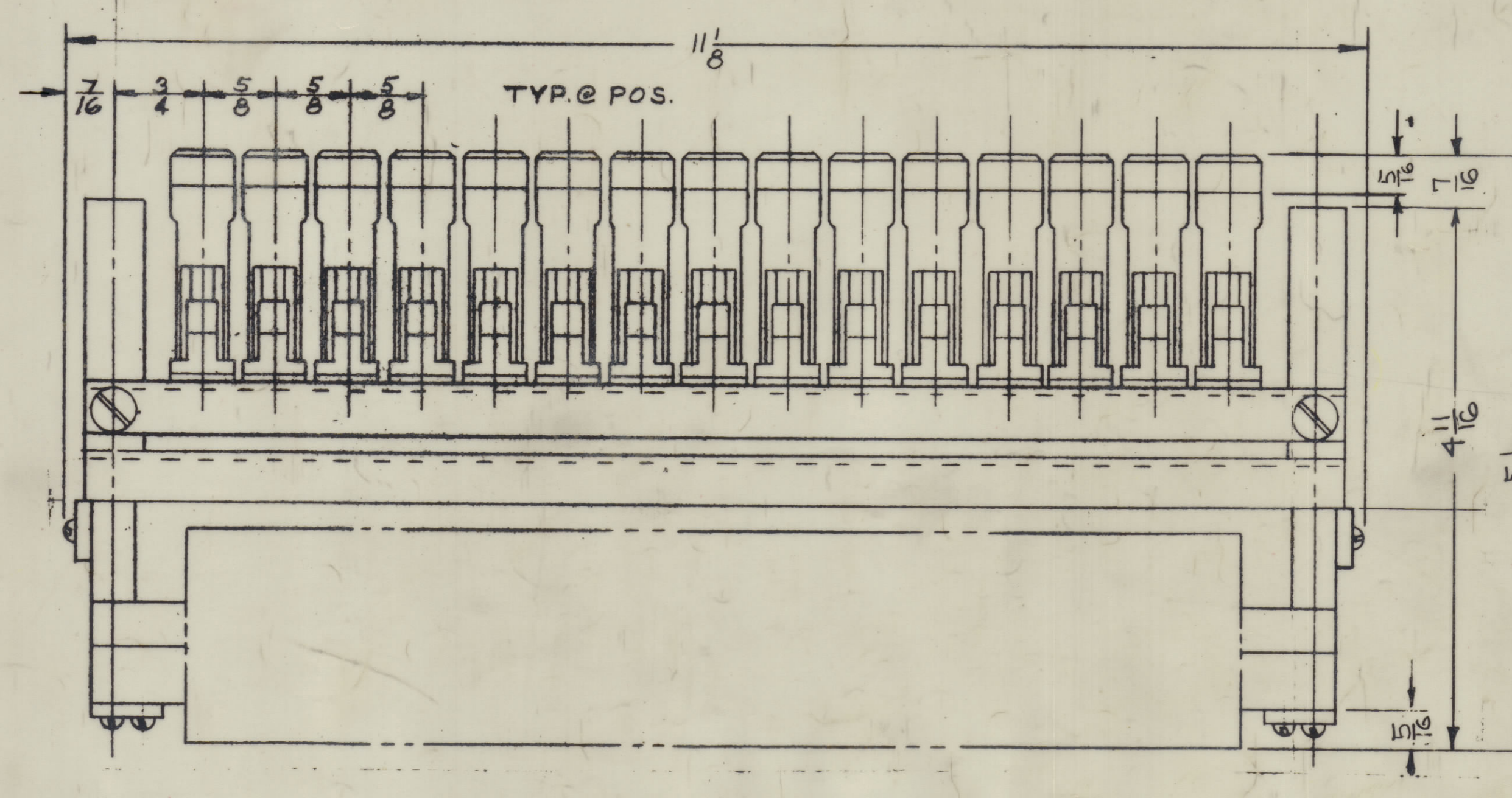


REVISIONS						
ZONE	SYM	DESCRIPTION	DATE	E.M.N. NO.	DRAFT	CHKD
	Ø	ORIGINAL RELEASE FOR PRODUCTION	11-24-65	Ø		
A		ROW 4 2A18 POS. 14 WAS 10; ADDED TO ROW 4 2A SEC. 2, POS. 10, 11, 12, 13, 15 BLANK; REPLACED 1/2" Ø NOTE 11 W/NOTE 12 WAS BUTTONS - WHT.	11-29-65	15629	JL	JL



- NOTES
- CONTACTS:
 - ROW 1: 3A POS. 1,3,5,6,9,11,13,14,15, SEC. 1; 2A POS. 2,4, SEC. 1, 4A POS. 7,8,10,12, SEC. 1; 2A POS. 1,2,3,4,6,13,15, SEC. 2; 3A POS. 5,8,9,10,11,12,14, SEC. 2, 4A POS. 7 SEC. 2; 2A POS. 1,2,3,4,5,9,12,13,14,15, SEC. 1; 3A POS. 6,7,8,10,11, SEC. 1; 2A POS. 1,4,5,6,7,9,10,11,12,13, SEC. 2; 1A POS. 2,3,14,15, SEC. 2, 3A POS. 8 SEC. 2
 - ROW 2: 1A POS. 1,2,3,4,5,6,11,12,13,14,15, SEC. 1; 3A POS. 7,8,9,10 SEC. 1, 1A POS. 1,2,3,12,13,14,15, SEC. 2; 2A POS. 4,5,6,7,8,9,10,11, SEC. 2; 2A POS. 1,2,3,4,5,6,7, SEC. 1, 3A POS. 8,9 SEC. 1; 2A18 POS. 14 SEC. 1, 1A POS. 1,2,3,4, SEC. 2; 2A POS. 5,6,7,8,9 SEC. 2; POS. 10, 11, 12, 13, 15 BLANK.
 - LOCKOUT & INTERLOCK BETWEEN ROWS
 - BUTTONS: WHITE TRANSLUCENT, POS. 14 ROW 4 DOUBLE RED TRANSLUCENT
 - TOP FORM A@ POS. SEC. 2 TO OPERATE AFTER OTHER FORM 'A' ARE MADE
 - POS. 14 ROW 4 MOMENTARY RELEASE
 - WITHOUT BUTTONS: POS. 7-15 ROW 1, POS. 11-15 ROW 3, POS. 1-9 ROW 4
 - SWITCH SUPPLIED WITHOUT LAMPS. USE TMC BI 110 AS APPLICABLE
 - FOR SPARE BUTTONS SEE TMC LI 113
 - ENGRAVING 1/8 HIGH BLK GOTHIC FOR ALL BUTTONS CONSISTING OF NOT MORE THAN TWO LINES.
 - ENGRAVING 3/32 HIGH BLK GOTHIC FOR ALL BUTTONS CONSISTING OF THREE LINES.
 - TMC P/N TO BE STAMPED ON TOP OF UNIT.



REQ'D	ITEM	PART NUMBER	DESCRIPTION	SYMBOL
	EATON LIST OF MATERIAL			
	MATERIAL THE TECHNICAL MATERIEL CORP. MAMARONECK, NEW YORK			
	FINISH TITLE SWITCH, PUSHBUTTON STAND. TYPE			
	UNLESS OTHERWISE SPECIFIED DIMENSIONS ARE IN INCHES AND INCLUDE CHEMICALLY APPLIED OR PLATED FINISHES			
	SCALE	QTY/UNIT	MODEL USED ON	ASSY. NO.
			RTPH-1	S401-345 (12DA-8132-759)
	DECIMALS	FRACTIONS	TOLERANCES	DATE
	1 ± .08	1/84	± 1/84	11/24/65
	11 ± .01	ANALS	± .01	11-24-65
	111 ± .005	MECH. RES.	± .005	11/29/65

STANDARD DRAWING NOTES

SW416 A