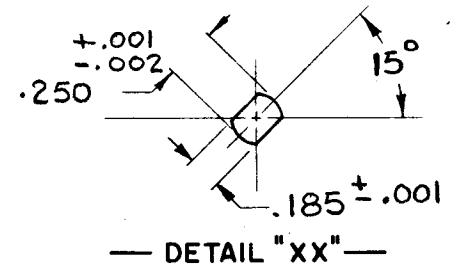
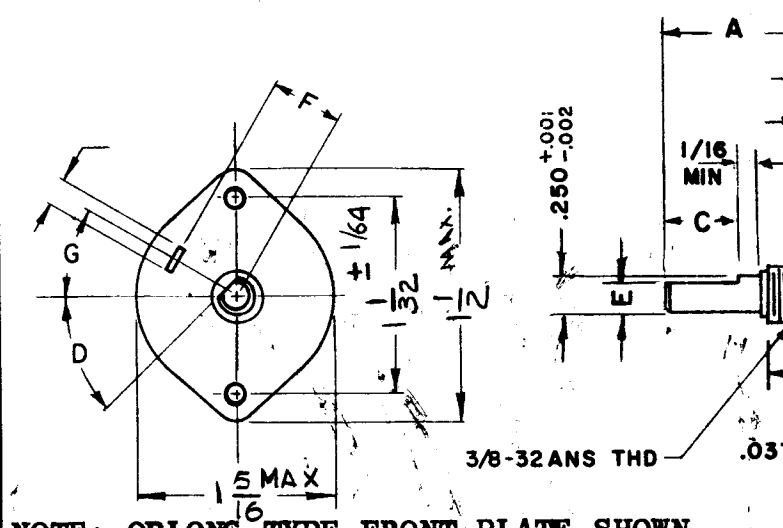


DESG.	DIMENSION	TOL.	REMARK
A	5/8	±.015	SHAFT LG. FROM MTG. SURFACE
B	1/4	±.005	BUSH. LG.
C	#	±.015	FLAT LG. (IF REQ.)
D	#	±2°	FLAT ANGLE (IF REQ.)
E	#	±.002	FLAT (IF REQUIRED)
F	17/32	±.010	KEY LOCATION (IF REQ.)
G	180°		KEY LOCATION (IF REQ.)
M	1/8	±.010	
N	1/8	±.093	REAR SCR. EXT.
Q	1/8	±.031	REAR SHAFT EXT.
R	.260 MAX		1st SEC. SPACING

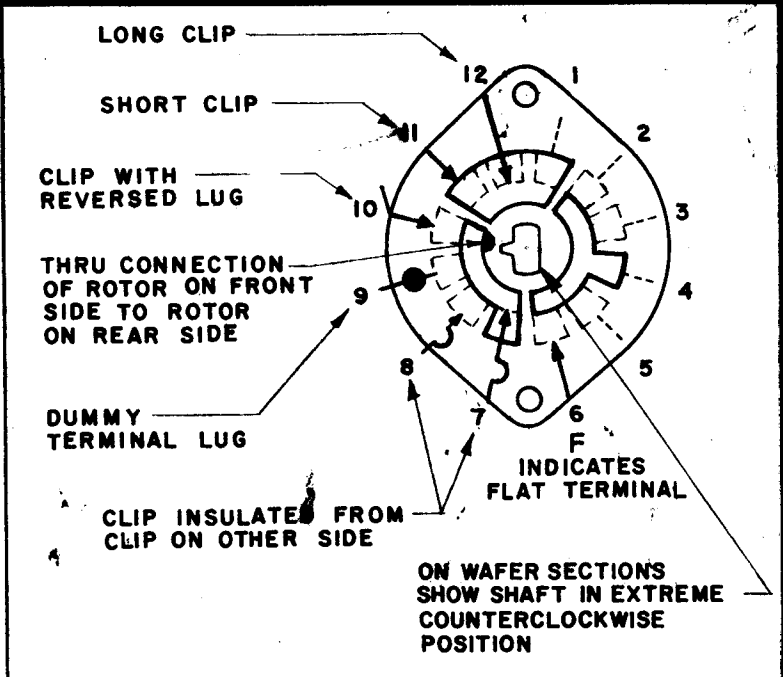
TMC PART NUMBER: SW-414 STAMP ON FRONT PLATE  
 FRONT PLATE SHAPE: ROUND OPTIONAL OBLONG  
 MECHANICAL SPECIFICATIONS:  
 NUMBER OF SECTIONS- 6  
 NUMBER OF POSITIONS- 12  
 ANGLE OF THROW- \_\_\_\_\_  
 CONTACTS:  
 SHORTING TYPE, SECTIONS \_\_\_\_\_  
 NON SHORTING TYPE, SECTIONS ✓  
 SILVER PLATED BRASS, SECTIONS ✓  
 SILVER ALLOY, SECTIONS \_\_\_\_\_  
 WAFERS:  
 PHENOLIC, SECTIONS ✓  
 CERAMIC, SECTIONS \_\_\_\_\_  
 MYCALEX, SECTIONS \_\_\_\_\_  
 IMPREGNATION (IF REQ.) \_\_\_\_\_  
 FINISH REQUIREMENTS:  
 ARMY ✓ NAVY \_\_\_\_\_ COMMERCIAL ✓  
 SALT TEST (IF REQ.) \_\_\_\_\_  
 HARDWARE, TO BE SUPPLIED BY MANUFACTURER:  
 1 QUAN. 3/8 -32 NUTS 9/16 ACROSS FLATS  
 MATERIAL \_\_\_\_\_ PLATING \_\_\_\_\_  
 1 QUAN. 3/8 INTERNAL TOOTH LOCKWASHER  
 MATERIAL \_\_\_\_\_ PLATING \_\_\_\_\_  
 ELECTRICAL SPECIFICATIONS:  
 MAXIMUM RATED VOLTAGE \_\_\_\_\_  
 MAXIMUM RATED CURRENT \_\_\_\_\_  
 NOTE:  
 FOR S401-13 ("F" TYPE) SWITCHES, THE SHAFT POSITION MUST BE SPECIFIED ON DETAIL "XX" BELOW.



NOTES



NOTE: OBLONG TYPE FRONT PLATE SHOWN, (SEE MECHANICAL SPECIFICATION)

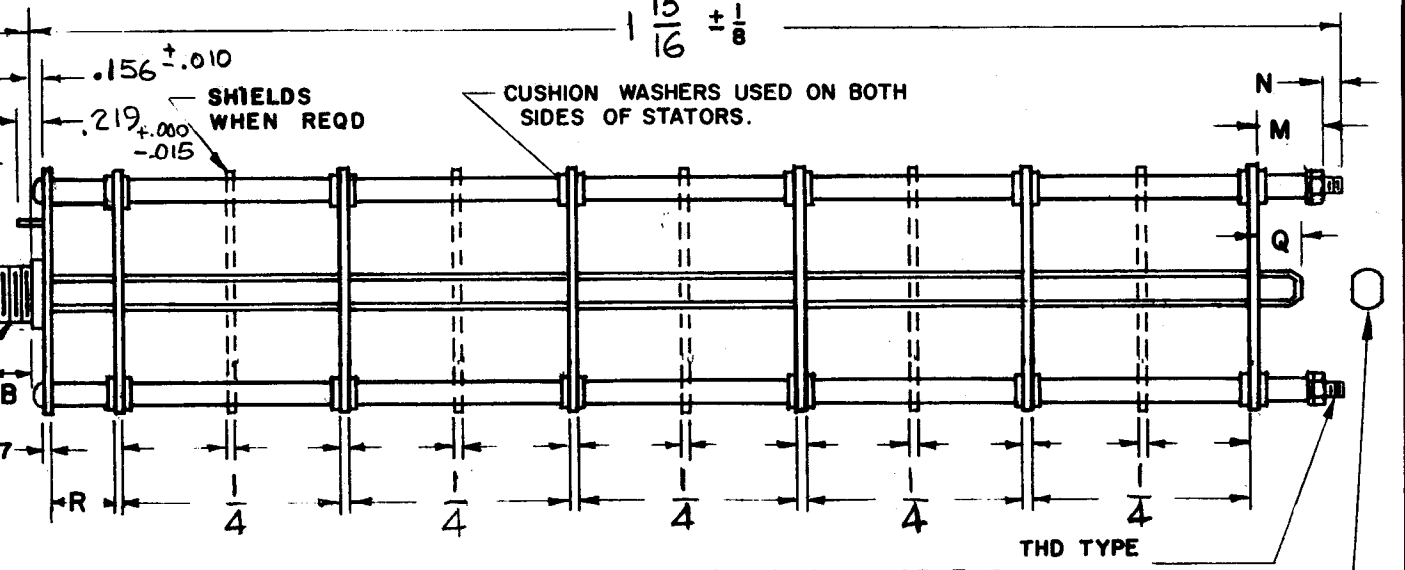


SYMBOLS USED IN MARKING PRINT

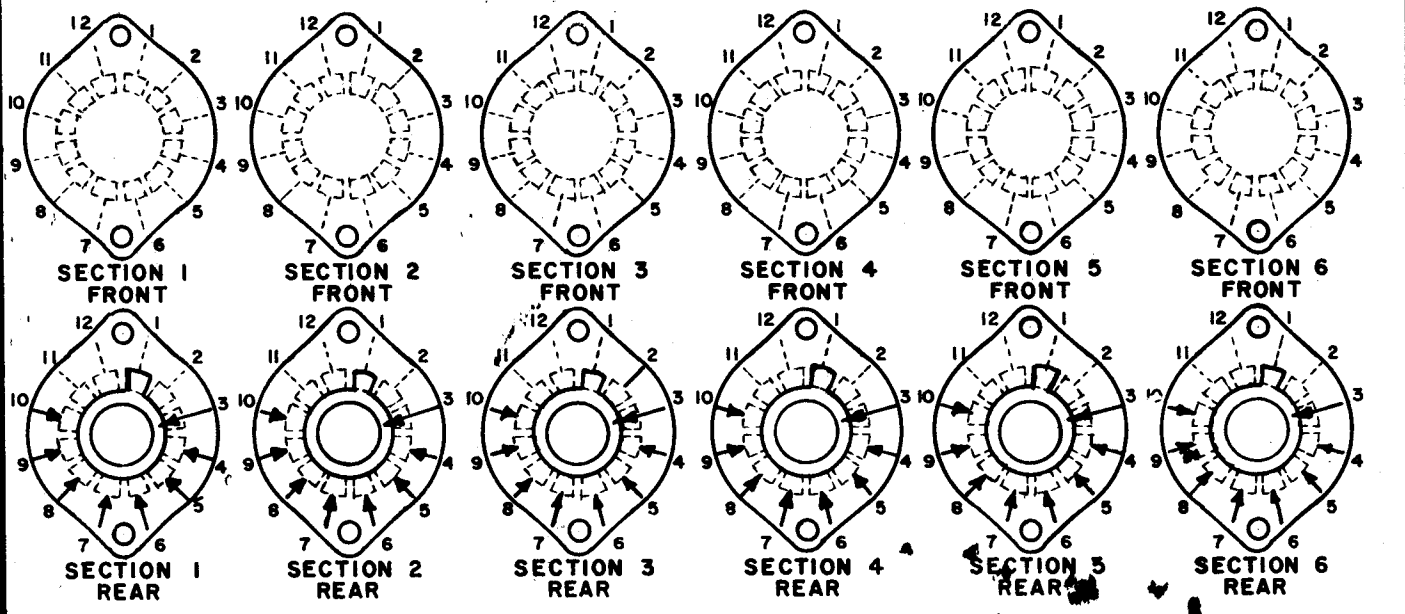
QTY./UNIT	MODEL USED ON	ASS'Y. NO.
1	RASB-1	A5131
SCALE	CODE	

THE CONTENTS OF THIS DRAWING ARE THE EXCLUSIVE PROPERTY OF THE TECHNICAL MATERIEL CORP. ITS UNAUTHORIZED USE OR REPRODUCTION IN WHOLE OR IN PART IS STRICTLY FORBIDDEN.

REVISIONS						
SYM	DESCRIPTION	DATE	E.M.N. NO.	DRAFT	CHKD	APPD
X1	DIMS ON CHART ADDED. WAFER WAS BAKELITE	9-9-65	X1	G.D.L.		
Ø	ORIGINAL RELEASE FOR PRODUCTION	10/26/65	Ø			



FRONT AND REAR SECTIONS VIEWED FROM FRONT OR KNOB END OF SWITCH IN EXTREME COUNTERCLOCKWISE POSITION. SEE NOTE (DET. "XX")



SWITCH, ROTARY - 12 POINT TYPE

MATERIAL	THE TECHNICAL MATERIEL CORP. MAMARONECK, NEW YORK			
FINISH	TITLE SWITCH, ROTARY			
UNLESS OTHERWISE SPECIFIED DIMENSIONS ARE IN INCHES AND INCLUDE CHEMICALLY APPLIED OR PLATED FINISHES	DRAWN	DATE	FINAL APPROVAL	DATE
	G.D.L.	3-27-65	<i>[Signature]</i>	10/26/65
DECIMALS .X ± .05 .XX ± .01 .XXX ± .005	CHECKED	DATE	ELECT. DES.	DATE
	B.M.	8-2-65		
FRACTIONS ± 1/64 ANGLES ± 0° 30'	TOLERANCES		SW414	
THE CONTENTS OF THIS DRAWING ARE THE EXCLUSIVE PROPERTY OF THE TECHNICAL MATERIEL CORP. ITS UNAUTHORIZED USE OR REPRODUCTION IN WHOLE OR IN PART IS STRICTLY FORBIDDEN.			SHEET	
			REV. LTR.	