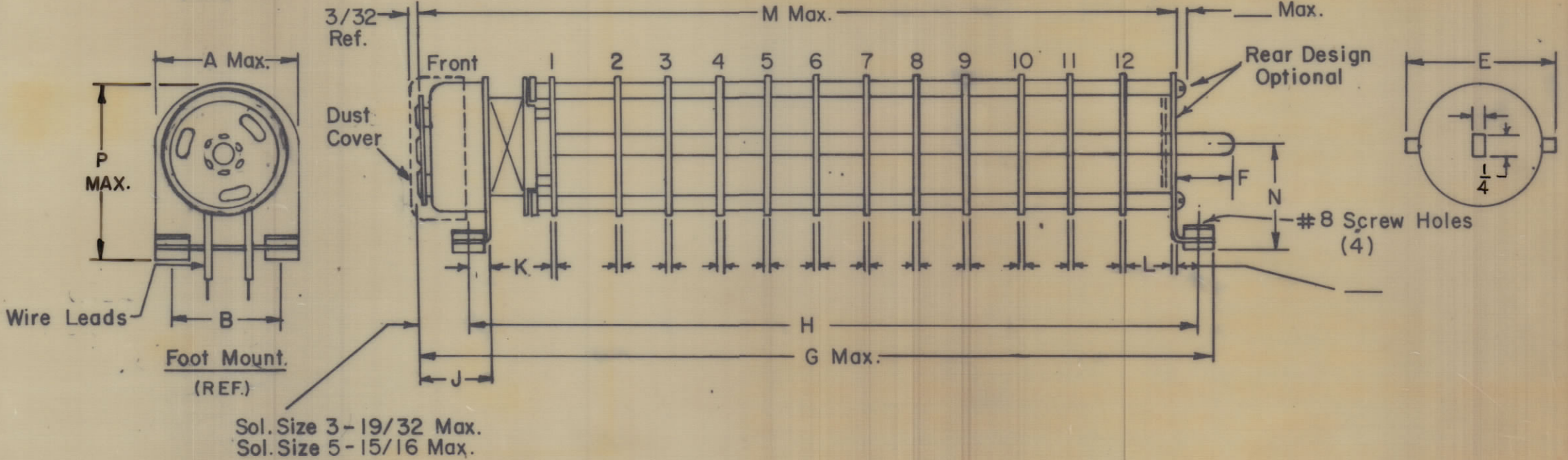
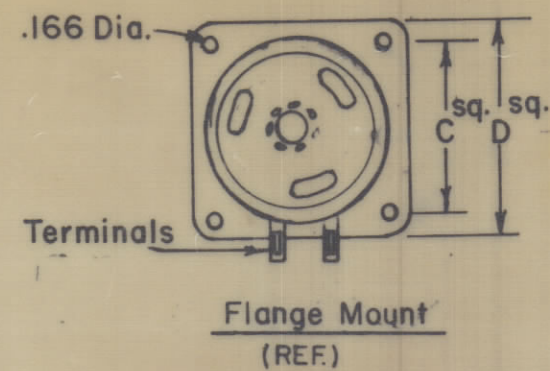


DESG.	DIMENSION	TOL.	REMARKS
A	1 11/32		Foot mount only
B	13/16		Foot mount only
C			Flange mount only
D			Flange mount only
E	3/4		Max. over clips
F		1/32	From rear plate to shaft end
G	4 1/4		Total length for foot mount
H	3 3/8	1/32	Foot mount only
J			
K			
L			Last wafer to rear plate
M			Total length (to end of rear plate)
N	1 5/8		Size 3-1 5/32 Size 5-1 9/16
P		MAX.	FOOT MOUNT ONLY

REVISIONS						
ZONE	SYM	DESCRIPTION	DATE	E.M.N. NO.	DRAFT	CHKD
		ORIGINAL RELEASE FOR PRODUCTION	11/12/65			
	A	CLERICAL CHANGE	12/21/65	CC		
	B	REVISED SPECS & FRONT OF SECTION 2	2/17/66	15788	JL	

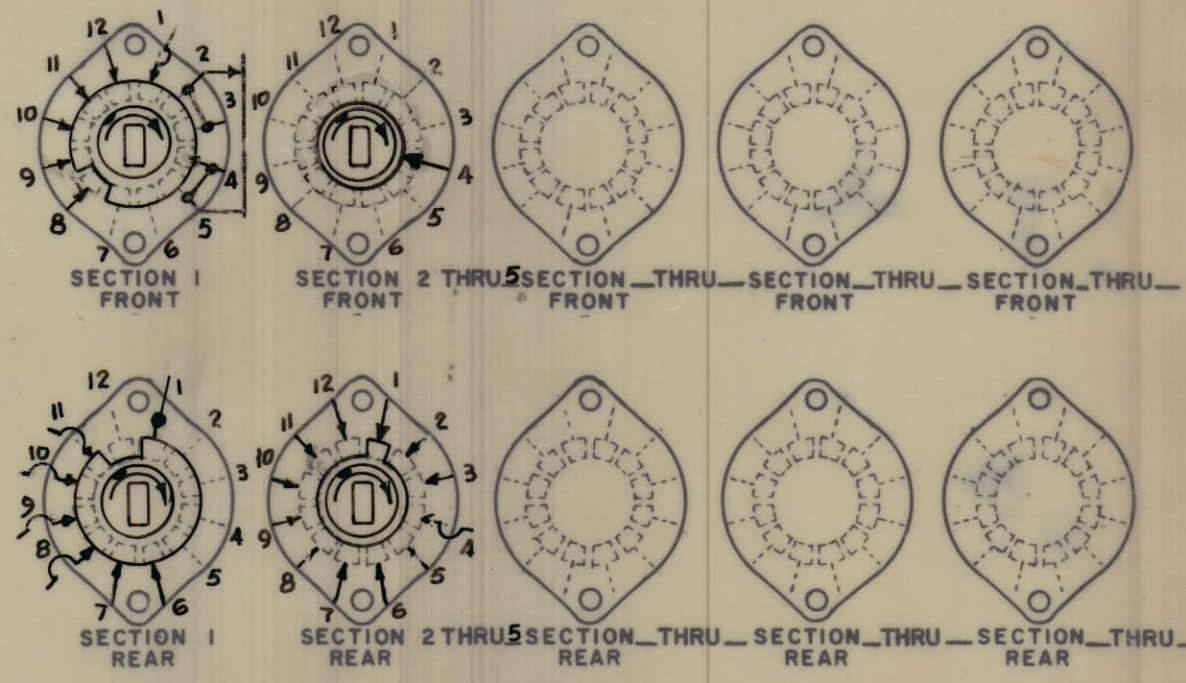
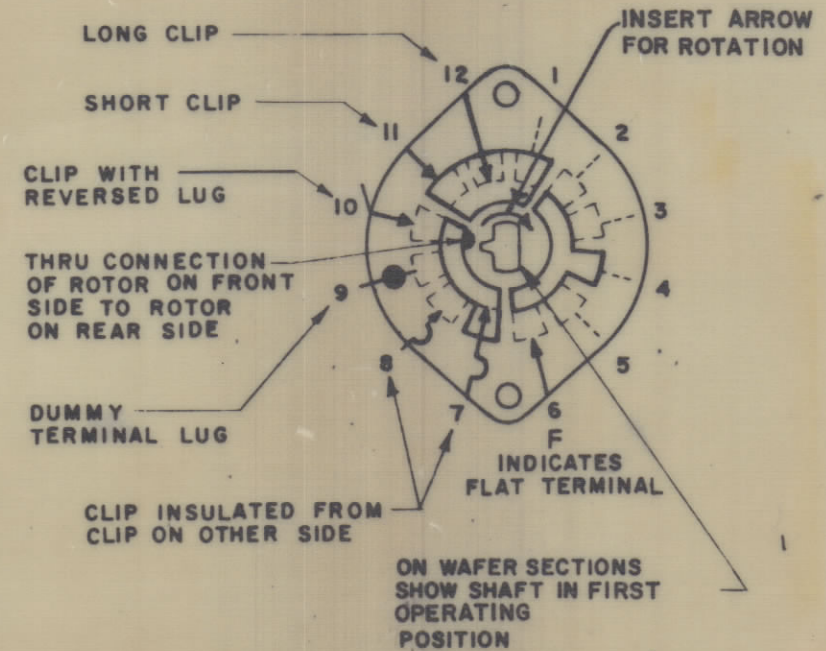


**Mechanical**  
 Rotation of Solenoid (viewed from solenoid end): CW  CCW   
 No. of sections: **5**  
 No. of positions: **2**  
 Angle of throw: **30°**  
 Type Mounting: Flange  Foot   
 Solenoid Connections: Solder lug  Wire   
**Contacts:**  
 Notch type, Sections **1**  
 Non-shorting, Sections **2 THRU 5**  
 Silver plated Brass   
 Silver alloy   
 Wafer material: Phenolic  Other   
 Finish: Comm.  50hr.  OR 200hr.  salt spray  
 Opr. temp.: **-35°C to +80°C**  
 Wafer Type: **F**  
**Electrical Specs.**  
 Current rating: Carry **5** amps resistive max.  
 Break @ 24 volts: **2** amp resistive max.  
 Break @ 115 volts: **.5** amp resistive max.  
 Dielectric Strength: 1000v clip to clip, 500v insulated clips back to back.

**Coil Specifications**

Solenoid Size: **3B**  
 Coil Resistance @ 20° C.: **73.2**  
 Voltage: **85 TO 100 V (115 VAC RECTIFIED)**  
 Gross Starting Torque @ 20° C.: **2.0 POUND-INCH.**  
 Duty Cycle: **1/10**  
 Rotary Stroke Angle: **35°**  
 Electric Strength: **1200 VRMS**  
 Dust Cover: with  w/out

- NOTES:**
- View wafers from solenoid end of switch.
  - Rear side of wafer viewed as if looking through wafers, from solenoid end.
  - Orientation of wafer is with Pin 1 in the one o'clock or twelve o'clock position, according to rotation, as viewed from the solenoid end with solenoid connecting wires or terminals facing down.
  - Rotation is in direction of arrow viewed from solenoid end.
  - Wafers shown in No. 1 or first operating position.



**SYMBOLS USED IN MARKING PRINT**

**STANDARD DRAWING**

QTY./UNIT		MODEL USED ON		ASSY. NO.	
SCALE		CODE		5401-281	
Do NOT SCALE				(250-404-246)	
THE CONTENTS OF THIS DRAWING ARE THE EXCLUSIVE PROPERTY OF THE TECHNICAL MATERIEL CORP. ITS UNAUTHORIZED USE OR REPRODUCTION IN WHOLE OR IN PART IS STRICTLY FORBIDDEN.					

REQ'D.	ITEM	PART NUMBER	DESCRIPTION	SYMBOL
LIST OF MATERIAL				
MATERIAL		THE TECHNICAL MATERIEL CORP. MAMARONECK, NEW YORK		
FINISH		TITLE SWITCH, ROTARY, SOLENOID 12 POSITION		
DRAWN		G.D.L.	DATE	11-9-65
CHECKED		J.C.B.	DATE	11-10-65
ELECT. DES.		J.M.	DATE	11-12-65
MECH. DES.			DATE	
FINAL APPROVAL				DATE
SW 406				11/12/65
SHEET				B

SW 406 B