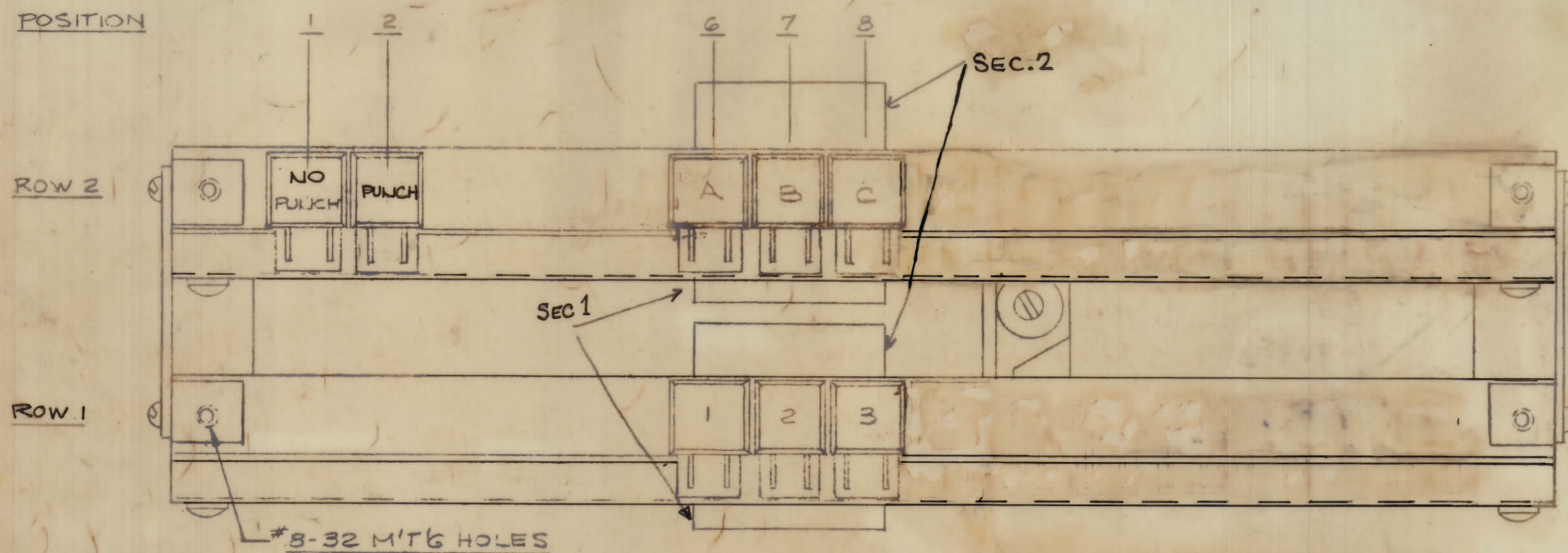
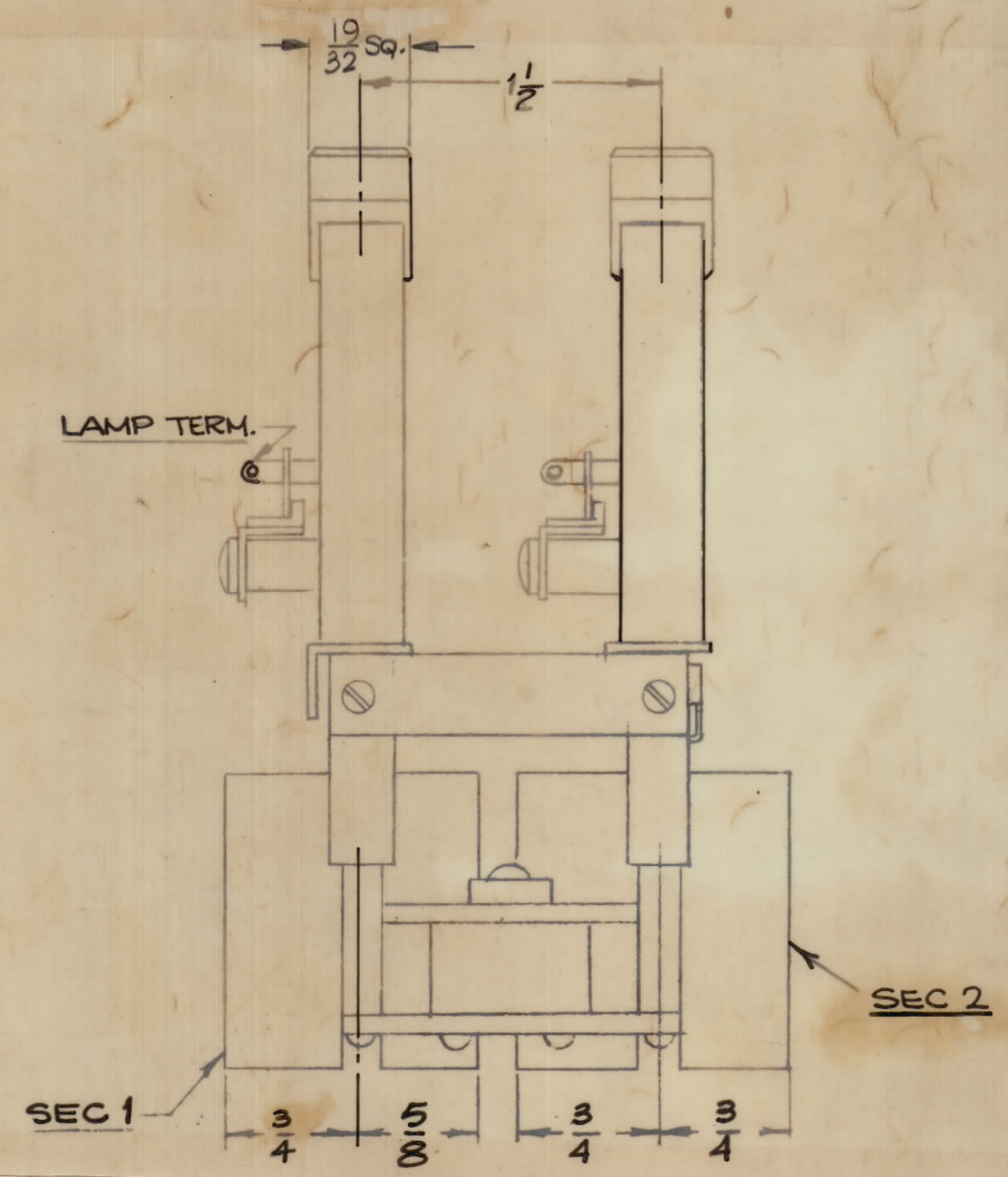
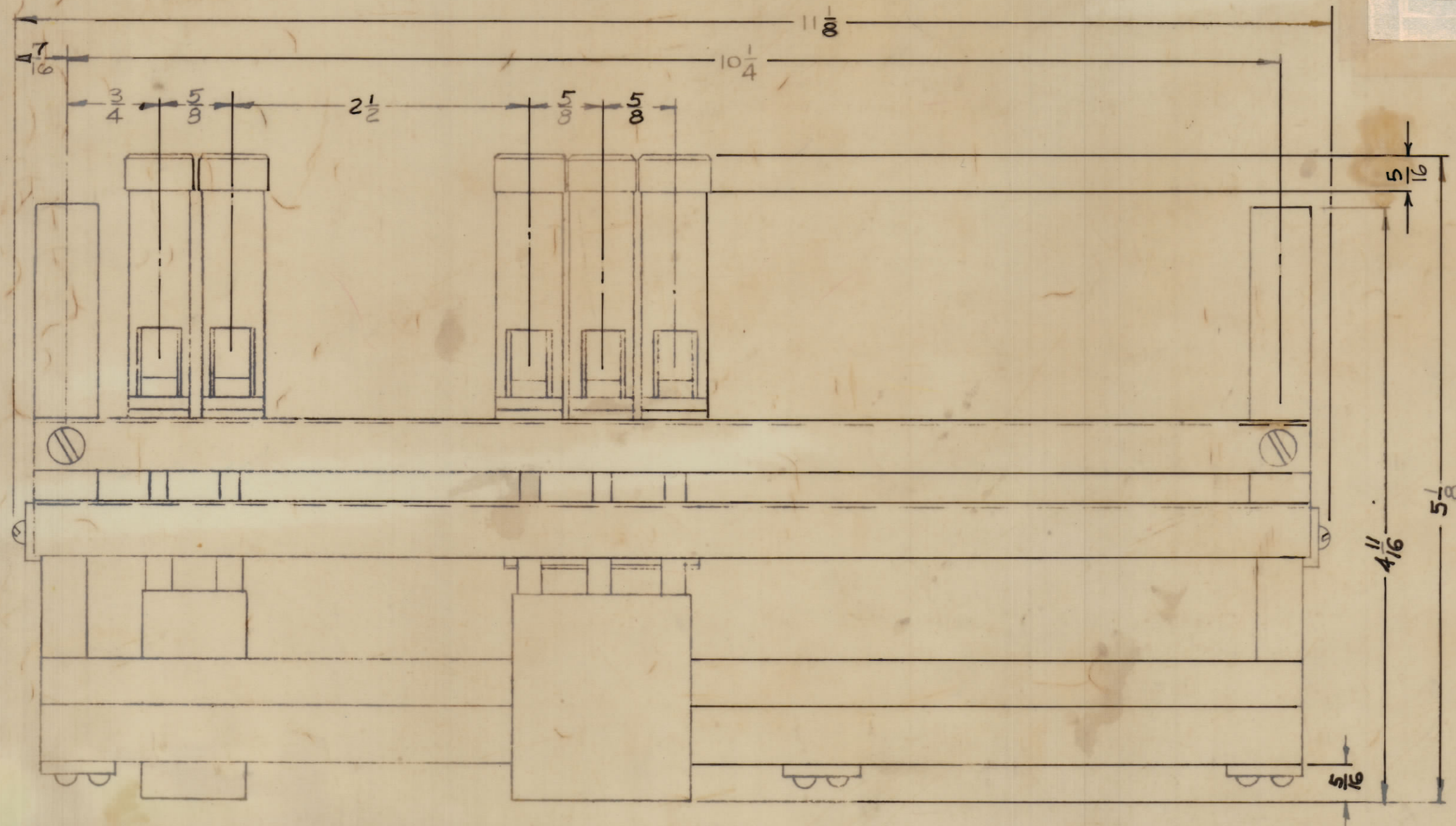


STANDARD DRAWING

REVISIONS						
ZONE	SYM	DESCRIPTION	DATE	E.M.N. NO.	DRAFT	CHKD APPD
	X1	MOMENTARY (NON-LOCKING) ACTION POSITIONS 1 & 2 ROW 2 INDEPENDENT.	8-20-65	-M-	JC/SC	
	X2	ADDED ENGRAVING NOTE, L1113 WAS L1111	12-29-65	-H-	HLA	
	Ø	ORIGINAL RELEASE FOR PRODUCTION	2/16/65	Ø	J.W.V.	



- SWITCH ACTION:
MECHANICAL INTERLOCK AND POSITIVE LOCKOUT ACTION IN AND BETWEEN ROW 1 AND 2 POSITIONS 6,7,8.
MECHANICAL INTERLOCK AND POSITIVE LOCK OUT ACTION POSITIONS 1 AND 2 ROW 2, INDEPENDENT FROM OTHER POSITIONS.
 - CONTACTS:
3A POSITIONS 6,7,8 SEC. 1 ROW 1
2A POSITIONS 6,7,8 SEC. 2 ROW 1
1 A POSITION 1 SEC. 2 ROW 2
3A POSITIONS 6,7,8 SEC. 1 AND SEC. 2 ROW 2
CONTACTS ON POSITIONS 6,7,8 ROW 2 BREAK BEFORE CONTACTS 6,7,8 ROW 1 MAKE
 - BUTTONS:
WHITE WITH ENGRAVING AS SHOWN
 - POSITION 1,2,3,4,5,9,10,11,12,13,14,15, ROW 1 BLANK
POSITION 3,4,5,9,10,11,12,13,14,15 ROW 2 BLANK
 - ENGR: SEE NOTE
 - FLAT HEAD SCREWS ON STACKS
 - LAMPS NOT SUPPLIED
 - CONTACT RATING: 3A 110VAC NON-INDUCTIVE
1A 28VAC NON-INDUCTIVE
 - FOR SPARE PARTS USE TMC NO. B1110 FOR LAMP
TMC NO. L1113 FOR BUTTON
- NOTE: ENGRAVING - HORIZ. (AS SHOWN) AS PER TMC SPEC. 5366
1/8 HIGH GOTHIC BLACK FILL FOR ONE OR TWO LINES
3/32 HIGH GOTHIC BLACK FILL FOR THREE LINES



SW405 Ø

NOTES

RTRS -209		ASSY. NO.
QTY./UNIT	MODEL USED ON	ASSY. NO.
SCALE -#	CODE C	S401-3C5 (12DA-7865-759)

THE CONTENTS OF THIS DRAWING ARE THE EXCLUSIVE PROPERTY OF THE TECHNICAL MATERIEL CORP. ITS UNAUTHORIZED USE OR REPRODUCTION IN WHOLE OR IN PART IS STRICTLY FORBIDDEN.

REQ. D.	ITEM	PART NUMBER	DESCRIPTION	SYMBOL
EATON LIST OF MATERIAL				
MATERIAL -#				
FINISH -#				
THE TECHNICAL MATERIEL CORP. MAMARONECK, NEW YORK				
TITLE SWITCH, PUSHBUTTON DOUBLE ROW				
UNLESS OTHERWISE SPECIFIED DIMENSIONS ARE IN INCHES AND INCLUDE CHEMICALLY APPLIED OR PLATED FINISHES		DECIMALS .X ± .05 .XX ± .01 .XXX ± .005	FRACTIONS ± 1/64 ANGLES ± 0° 30'	TOLERANCES
DATE 6-15-65	DATE 6-15-65	DATE 12/15/65	DATE 12/16/65	DATE
DRAWN H. AUSTIN		CHECKED JCS		ELECT. DES. JC
MECH. DES. JC		DATE 12/15/65		DATE 12/16/65
FINAL APPROVAL				DATE
SW405				Ø
SHEET				REV. LTR.
2 M/L J. MUNFORD				1