

DESG.	DIMENSION	TOL. ±	REMARKS
A	1 11/32 MAX.		Foot mount only
B	13/16		Foot mount only
C			Flange mount only
D			Flange mount only
E	1 21/32		Max. over clips
F	1	1/32	From rear plate to shaft end
G			Total length for foot mount
H	1.543	1/32	Foot mount only
J			
K	21/32		
L			Last wafer to rear plate
M	2 1/2 MAX.		Total length (to end of rear plate)
N	1 5/32		Size 3 - 1 5/32 Size 5 - 1 9/16

REVISIONS							
ZONE	SYM	DESCRIPTION	DATE	E.M.N. NO.	DRAFT	CHKD	APPD
	K1	DUST COVER REMOVED, NOTE ADDED TO WAFER WREN, SECTION 1 FRONT 3 WAS SHORT CLIP. NOTE ① REVISED.	7-28-65	+	E		
	Ø	ORIGINAL RELEASE FOR PRODUCTION	8-2-65	Ø	H.V.V.		
	A	DIM. CNT "A" WAS 1 5/16, "M" WAS 2 3/4. ROUND CONFIG., @ 26 VDC, ADDED. UNUSED WAFERS DELETED.	10-1-65	14955	H.V.V.	JCB	MMH
	B	COMPLETELY REV. DET. OF WAFER SECT. 1, 2 & 3	7-3-67	18311	NLD		F.E. 111

Switch Specifications

Mechanical

Rotation of Solenoid (viewed from solenoid end): CCW ✓

No. of sections: 3
 No. of positions: 12
 Angle of throw: 30°

Type Mounting: Foot ✓
 Solenoid Connections: Solder lug ✓

Contacts:

Control type, Sections 1 (SLAVE)
 Non-shorting, Sections 2 & 3

Silver alloy ✓
 Wafer material: Phenolic ✓
 Finish: Comm. ✓
 Opr. temp.: 0° C To +50° C
 Wafer Type: F
 Electrical Specs.

Current rating: Carry 5 amps resistive max.
 Break @ 24 volts: 2 amp resistive max.
 Break @ 115 volts: 1 amp resistive max.
 Dielectric Strength: 1000v clip to clip, 500v insulated clips back to back.

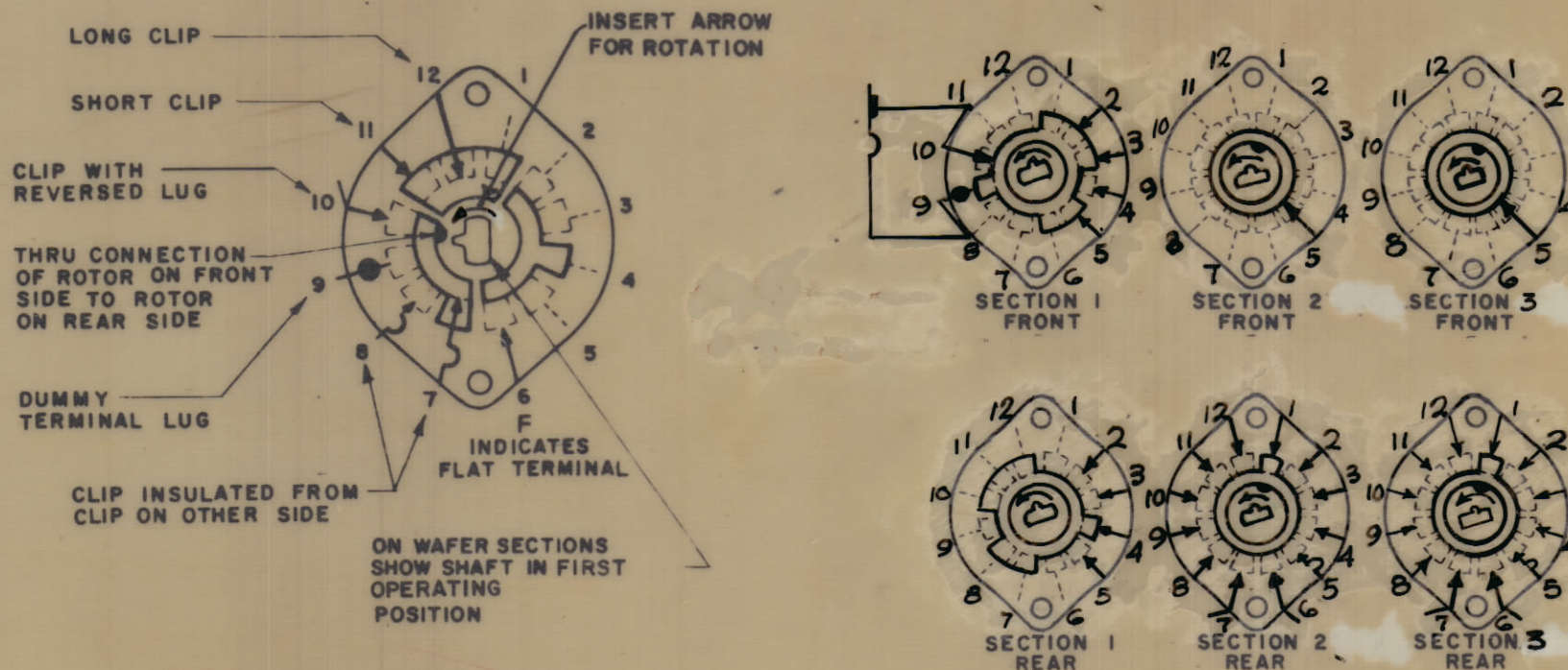
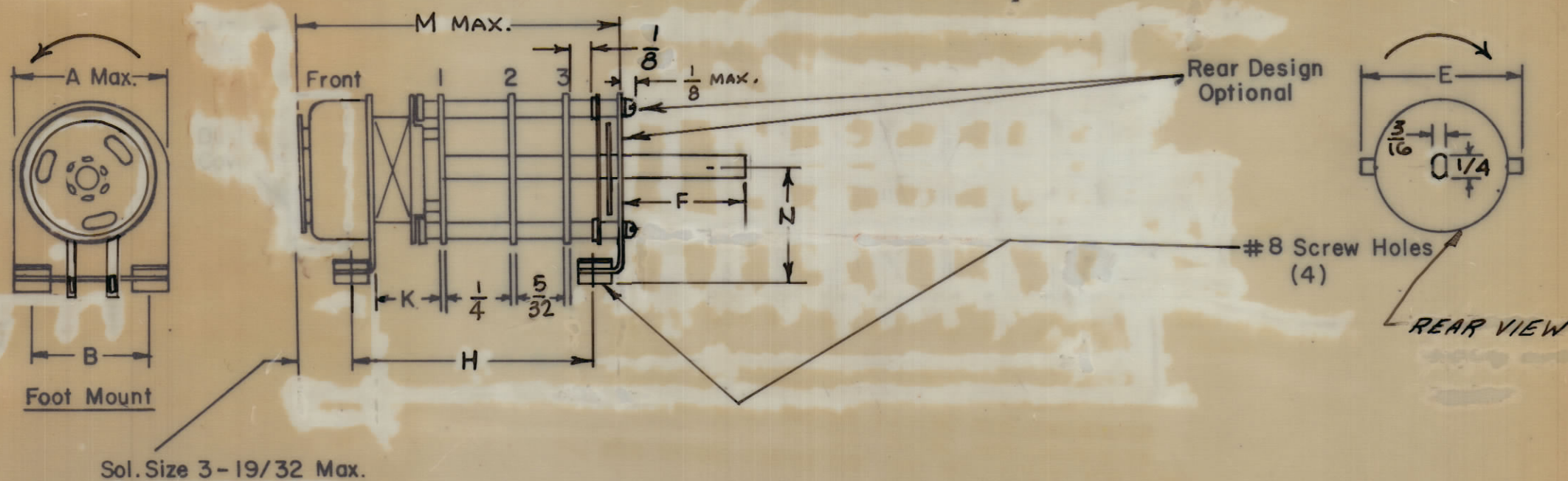
Coil Specifications

Solenoid Size: 3B
 Coil Resistance @ 20° C.: 7.4 Ω ± 10% Tol.
 Voltage: 24 V To 30 VDC
 Gross Starting Torque @ 20° C.: 2 lb.in. @ 26 VDC
 Duty Cycle: 1/10
 Rotary Stroke Angle: 35°
 Electric Strength: 1200 VRMS
 Dust Cover: w/out ✓

NOTES:

- View wafers from solenoid end of switch, with solenoid terminals face down.
- Rear side of wafer viewed as if looking through wafers, from solenoid end.

- Rotation is in direction of arrow viewed from solenoid end.
- Wafers shown in No. 1 or first operating position.



SYMBOLS USED IN MARKING PRINT

NOTE:

SECTION 2 & 3. PINS 6 & 7 ARE CLIPS WITH REVERSED LUGS. BENT TOWARD SOLENOID.

REQ'D.	ITEM	PART NUMBER	DESCRIPTION	SYMBOL
LIST OF MATERIAL				
MATERIAL		THE TECHNICAL MATERIEL CORP. MAMARONECK, NEW YORK		
FINISH		TITLE SWITCH, ROTARY, SOLENOID 12 POSITION		
UNLESS OTHERWISE SPECIFIED DIMENSIONS ARE IN INCHES AND INCLUDE CHEMICALLY APPLIED OR PLATED FINISHES.		DRAWN H. AUSTIN	DATE 7-13-65	FINAL APPROVAL [Signature]
CHECKED [Signature]		DATE 8/1/65	DATE 8/1/65	
ELECT. DES. N. LA BATE		DATE 8/1/65	DATE 8/1/65	
MECH. DES.		DATE		DATE
DECIMALS .X ± .05 .XX ± .01 .XXX ± .005		FRACTIONS ± 1/64 ANGLES ± 0° 30'		TOLERANCES
THE CONTENTS OF THIS DRAWING ARE THE EXCLUSIVE PROPERTY OF THE TECHNICAL MATERIEL CORP. ITS UNAUTHORIZED USE OR REPRODUCTION IN WHOLE OR IN PART IS STRICTLY FORBIDDEN.		SW403		B
NOTES		SHEET		REV. LTR.

SW403 B