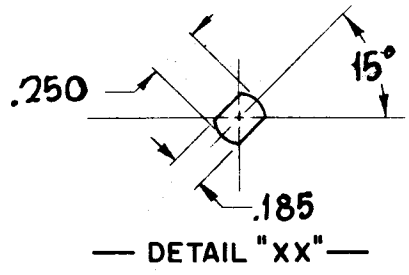


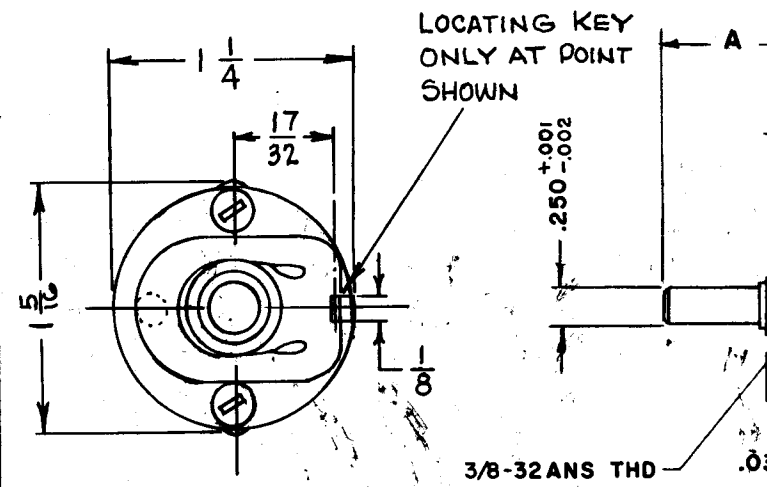
DESG.	DIMENSION	TOL.	REMARK
A	.875	±.015	SHAFT LG. FROM MTG. SURFACE
B	.375	±.005	BUSH. LG.
C		±.015	FLAT LG. (IF REQ.)
D		±2°	FLAT ANGLE (IF REQ.)
E		±.002	FLAT (IF REQUIRED)
F		±.010	KEY LOCATION (IF REQ.)
G			KEY LOCATION (IF REQ.)
M	.156	±.010	
N	.093	±.093	REAR SCR. EXT.
Q		±.031	REAR SHAFT EXT.
R	7/32		1st SEC. SPACING

TMC PART NUMBER: SW-400 STAMP ON FRONT PLATE
 FRONT PLATE SHAPE: ROUND X OR OBLONG
 MECHANICAL SPECIFICATIONS:
 NUMBER OF SECTIONS- 5
 NUMBER OF POSITIONS- 6
 ANGLE OF THROW- 30°
 CONTACTS:
 SHORTING TYPE, SECTIONS _____
 NON SHORTING TYPE, SECTIONS 5
 SILVER PLATED BRASS, SECTIONS 5
 SILVER ALLOY, SECTIONS _____
 WAFERS:
 BAKELITE, SECTIONS _____
 CERAMIC, SECTIONS _____
 MYCALEX, SECTIONS 5
 IMPREGNATION (IF REQ.) _____
 FINISH REQUIREMENTS:
 ARMY NAVY COMMERCIAL X
 SALT TEST (IF REQ.) _____
 HARDWARE, TO BE SUPPLIED BY MANUFACTURER:
 1 QUAN. 3/8 -32 NUTS ACROSS FLATS
 MATERIAL _____ PLATING _____
 1 QUAN. 3/8 INTERNAL TOOTH LOCKWASHER
 MATERIAL _____ PLATING _____
 ELECTRICAL SPECIFICATIONS:
 MAXIMUM RATED VOLTAGE _____
 MAXIMUM RATED CURRENT _____

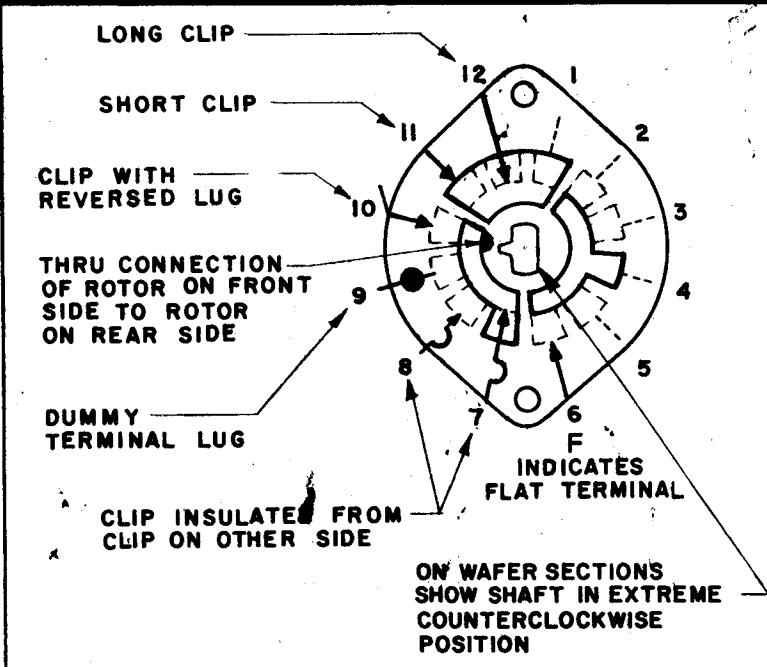
NOTE: FOR S401-13 ("F" TYPE) SWITCHES, THE SHAFT POSITION MUST BE SPECIFIED ON DETAIL "XX" BELOW.



NOTES



NOTE: ROUND TYPE FRONT PLATE SHOWN, (SEE MECHANICAL SPECIFICATION)

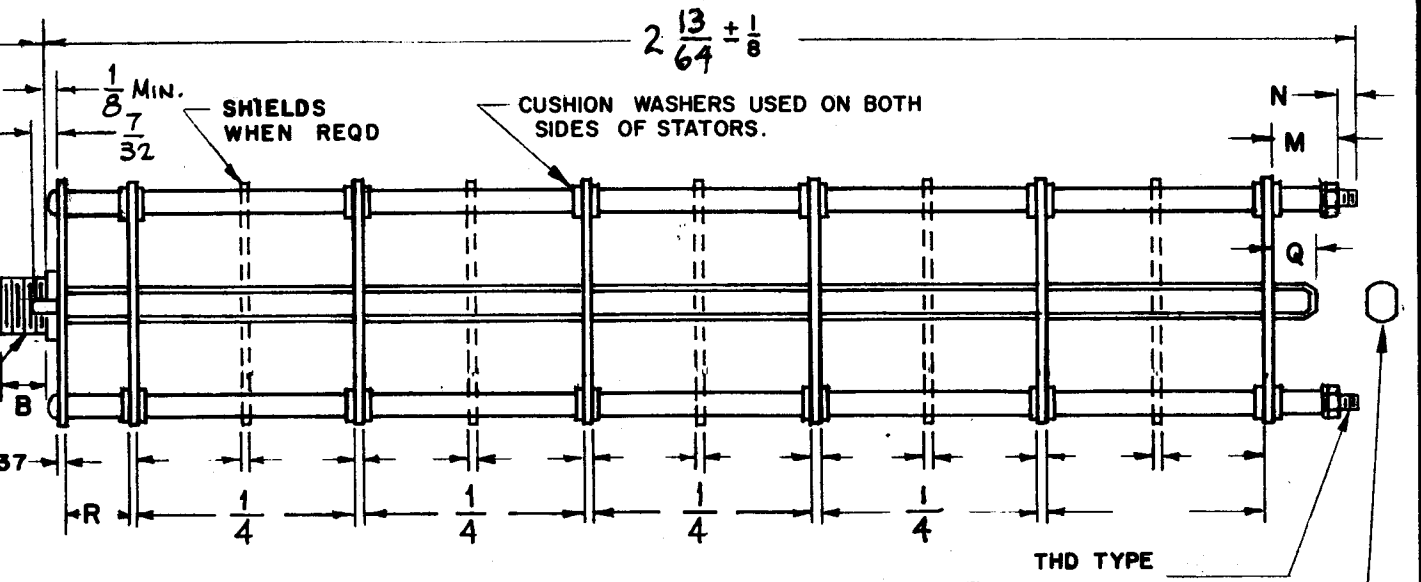


SYMBOLS USED IN MARKING PRINT

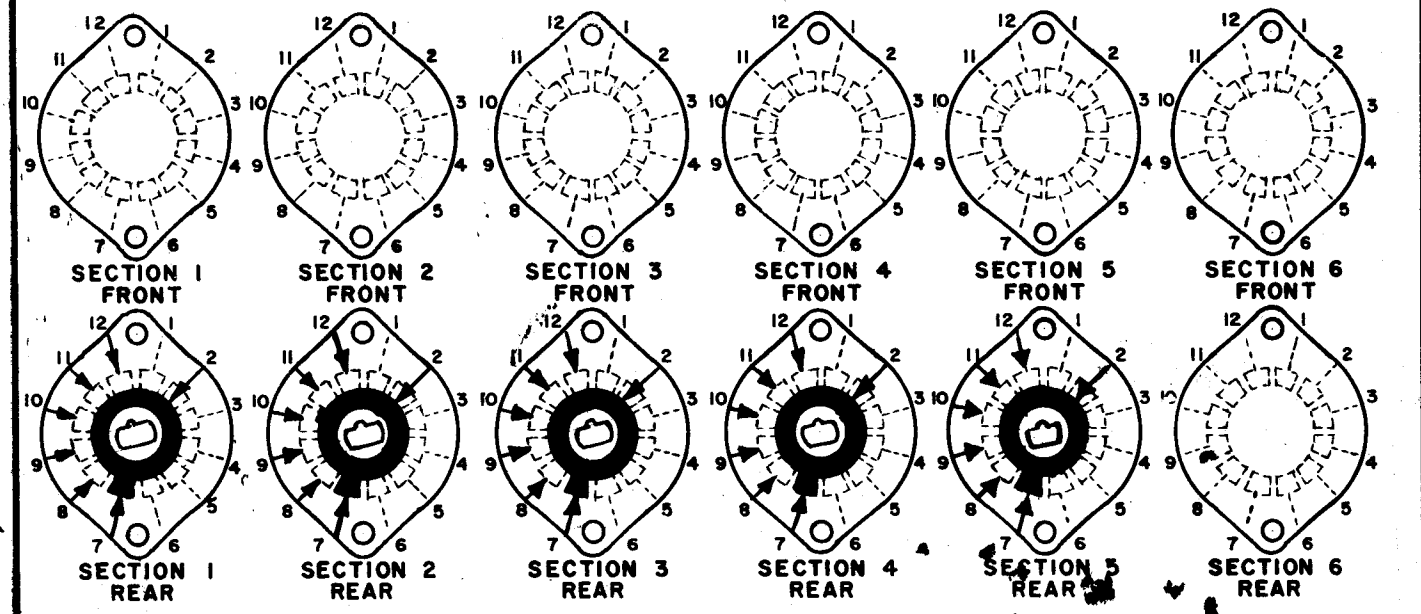
QTY./UNIT	MODEL USED ON	ASS'Y. NO.
SCALE	CODE	
	C	

THE CONTENTS OF THIS DRAWING ARE THE EXCLUSIVE PROPERTY OF THE TECHNICAL MATERIEL CORP. ITS UNAUTHORIZED USE OR REPRODUCTION IN WHOLE OR IN PART IS STRICTLY FORBIDDEN.

REVISIONS						
SYM	DESCRIPTION	DATE	E.M.N. NO.	DRAFT	CHKD	APPD
Ø	ORIGINAL RELEASE FOR PRODUCTION	4/22/65		NLA		
A	SECT. 5 REAR ADD, DIM. 2-13/64 WAS 1-17/32; DIM. 1/4 ADD.	5-7-65	14034	J.P.	J.C.S.	



FRONT AND REAR SECTIONS VIEWED FROM FRONT OR KNOB END OF SWITCH IN EXTREME COUNTERCLOCKWISE POSITION. SEE NOTE (DET. "XX")



SWITCH, ROTARY - 12 POINT TYPE

MATERIAL	SEE SPECS	THE TECHNICAL MATERIEL CORP. BUDETTI MAMARONECK, NEW YORK			
FINISH	SEE SPECS.	TITLE SWITCH, ROTARY KEY SELECTOR			
UNLESS OTHERWISE SPECIFIED DIMENSIONS ARE IN INCHES AND INCLUDE CHEMICALLY APPLIED OR PLATED FINISHES		DRAWN H. AUSTIN	DATE 4-19-65	FINAL APPROVAL [Signature]	DATE 4/26/65
DECIMALS .X ± .05 .XX ± .01 .XXX ± .005		FRACTIONS ± 1/64 ANGLES ± 0° 30'		SW 400	
TOLERANCES		ELECT. DES. [Signature]	DATE 4-22-65	A	
		MECH. DES.	DATE	SHEET	
				REV. LTR.	