

DESG.	DIMENSION	TOL.	REMARK
A	.625	±.015	SHAFT LG. FROM MTG. SURFACE
B	.250	±.005	BUSH. LG.
C	—	±.015	FLAT LG. (IF REQ.)
D	—	±2°	FLAT ANGLE (IF REQ.)
E	—	±.002	FLAT (IF REQUIRED)
F	.531	±.010	KEY LOCATION (IF REQ.)
G	180°		KEY LOCATION (IF REQ.)
M	.187	±.010	
N	.062	±.093	REAR SCR. EXT.
Q	.187	±.031	REAR SHAFT EXT.
R	1/2		1st SEC. SPACING

TMC PART NUMBER: SW-397 STAMP ON FRONT PLATE
 FRONT PLATE SHAPE: ROUND OR OBLONG

MECHANICAL SPECIFICATIONS:
 NUMBER OF SECTIONS—1
 NUMBER OF POSITIONS—
 ANGLE OF THROW—30°

CONTACTS:
 SHORTING TYPE, SECTIONS HOMING
 NON SHORTING TYPE, SECTIONS 1
 SILVER PLATED BRASS, SECTIONS 1
 SILVER ALLOY, SECTIONS 1

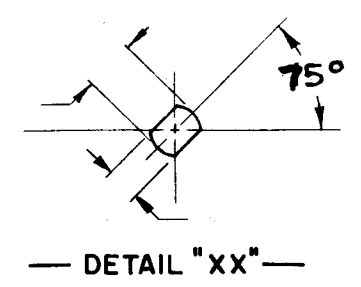
WAFERS:
 BAKELITE, SECTIONS 1
 CERAMIC, SECTIONS 1
 MYCALEX, SECTIONS 1
 IMPREGNATION (IF REQ.) 1

FINISH REQUIREMENTS:
 ARMY NAVY COMMERCIAL
 SALT TEST (IF REQ.) 50 HRS

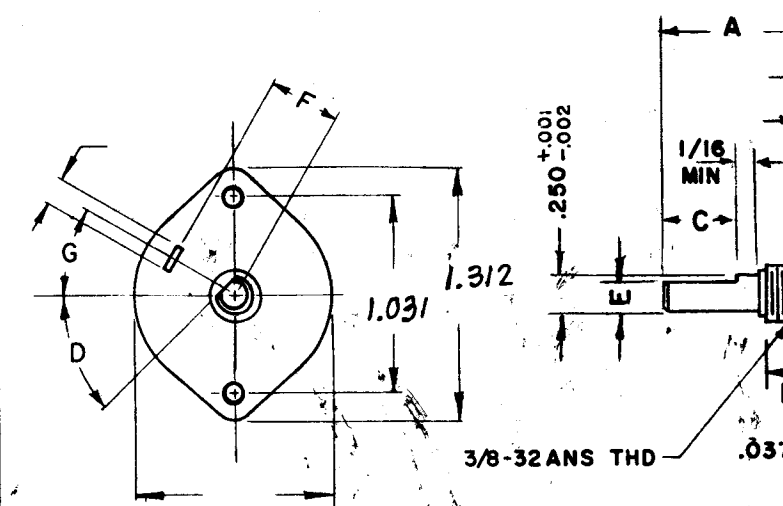
HARDWARE, TO BE SUPPLIED BY MANUFACTURER:
1 QUAN. 3/8 -32 NUTS 9/16 ACROSS FLATS
 MATERIAL STEEL PLATING CADMIUM
1 QUAN. STEEL INTERNAL TOOTH LOCKWASHER
 MATERIAL STEEL PLATING CADMIUM

ELECTRICAL SPECIFICATIONS:
 MAXIMUM RATED VOLTAGE _____
 MAXIMUM RATED CURRENT _____

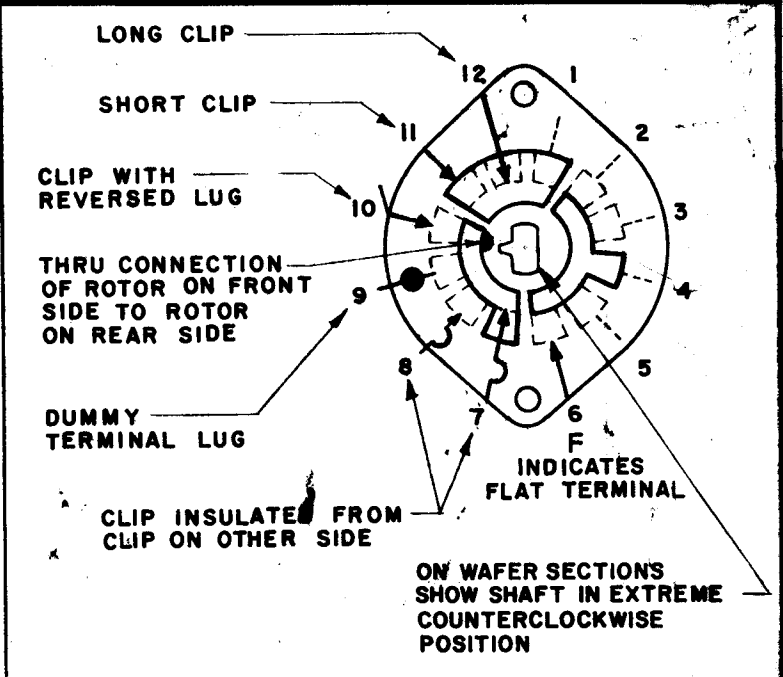
NOTE:
 FOR S401-13 ("F" TYPE) SWITCHES, THE SHAFT POSITION MUST BE SPECIFIED ON DETAIL "XX" BELOW.



NOTES



NOTE: OBLONG TYPE FRONT PLATE SHOWN, (SEE MECHANICAL SPECIFICATION)

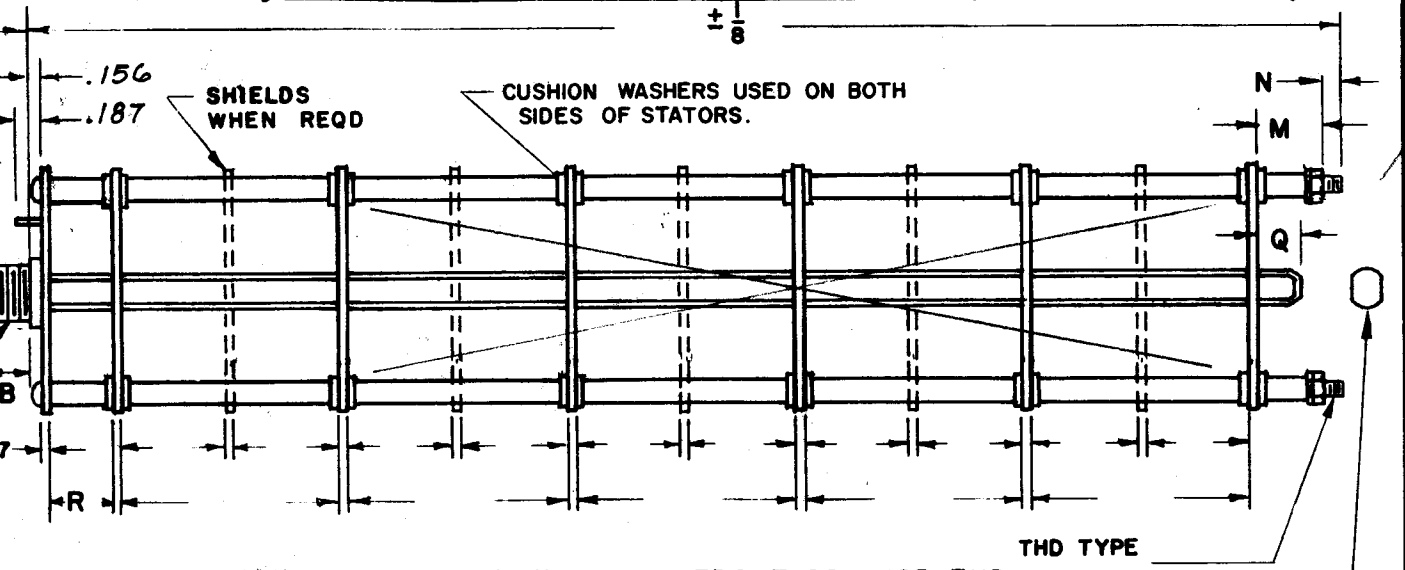


SYMBOLS USED IN MARKING PRINT

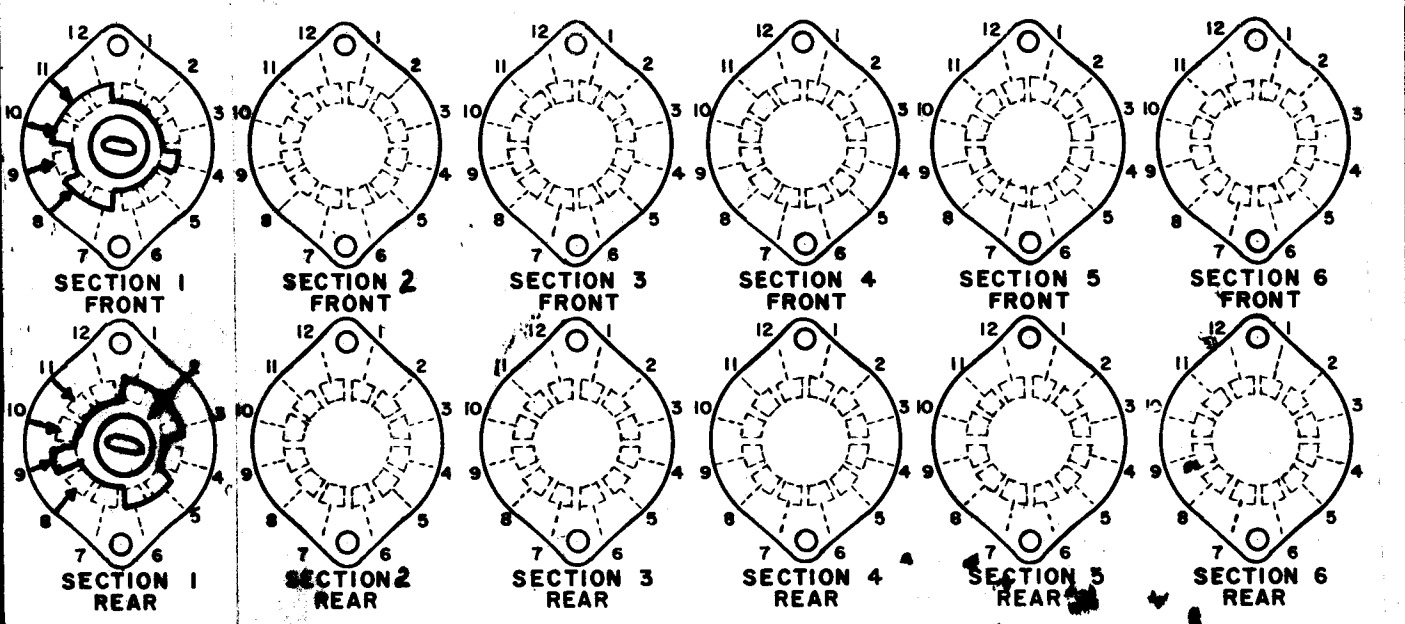
4	LRCC LRMC	AX567 AX568
QTY./UNIT	MODEL USED ON	ASSY. NO.
SCALE	CODE	
	C	S401-281

THE CONTENTS OF THIS DRAWING ARE THE EXCLUSIVE PROPERTY OF THE TECHNICAL MATERIEL CORP. ITS UNAUTHORIZED USE OR REPRODUCTION IN WHOLE OR IN PART IS STRICTLY FORBIDDEN.

REVISIONS						
SYM	DESCRIPTION	DATE	E.M.N. NO.	DRAFT	CHKD	APPD
Ø	ORIGINAL RELEASE FOR PRODUCTION	4-21-65		HCA		
A	SW397 WAS SW399	5-12-65	14077	CSL	JL	JCC
B	SEC. 1 ROTOR POS. RELOCATED 180°. TMC P/N SW397 WAS SW399, 75° WAS 15°.	6-24-65	14335	DVV		JCC



FRONT AND REAR SECTIONS VIEWED FROM FRONT OR KNOB END OF SWITCH IN EXTREME COUNTERCLOCKWISE POSITION.



SWITCH, ROTARY - 12 POINT TYPE F

ZETENA	THE TECHNICAL MATERIEL CORP. MAMARONECK, NEW YORK				
MATERIAL	TITLE SWITCH, "CARRIER FREQUENCY"				
FINISH	DRAWN	DATE	FINAL APPROVAL		DATE
	HCA	4-20-65	[Signature]		
	CHECKED	DATE			
	JCC	5/3/65			
UNLESS OTHERWISE SPECIFIED DIMENSIONS ARE IN INCHES AND INCLUDE CHEMICALLY APPLIED OR PLATED FINISHES	ELECT. DES.	DATE	SW397		B
DECIMALS .X ± .05 .XX ± .01 .XXX ± .005	TOLERANCES	DATE	SHEET		REV. LTR.
FRACTIONS ± 1/64 ANGLES ± 0° 30'					