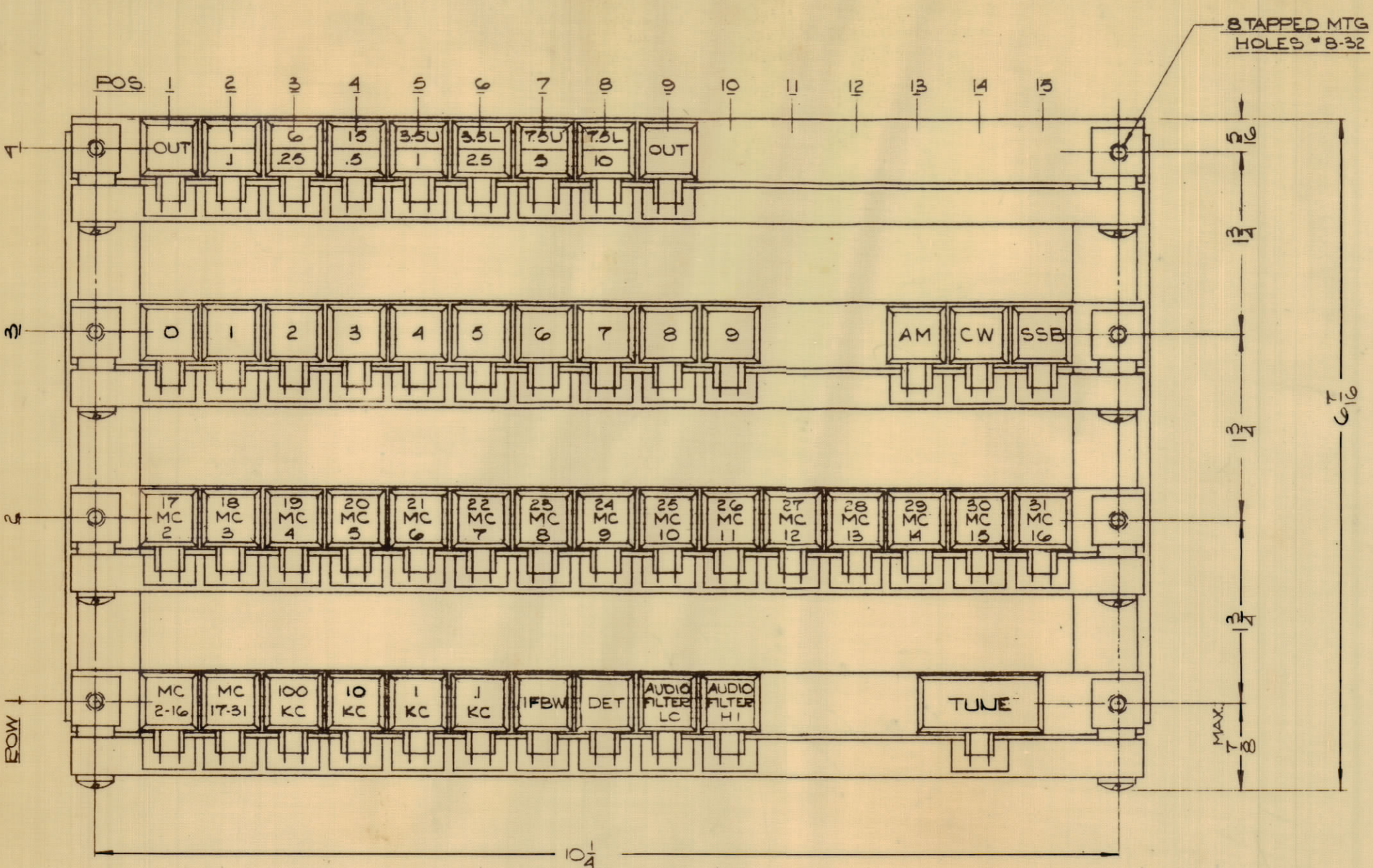


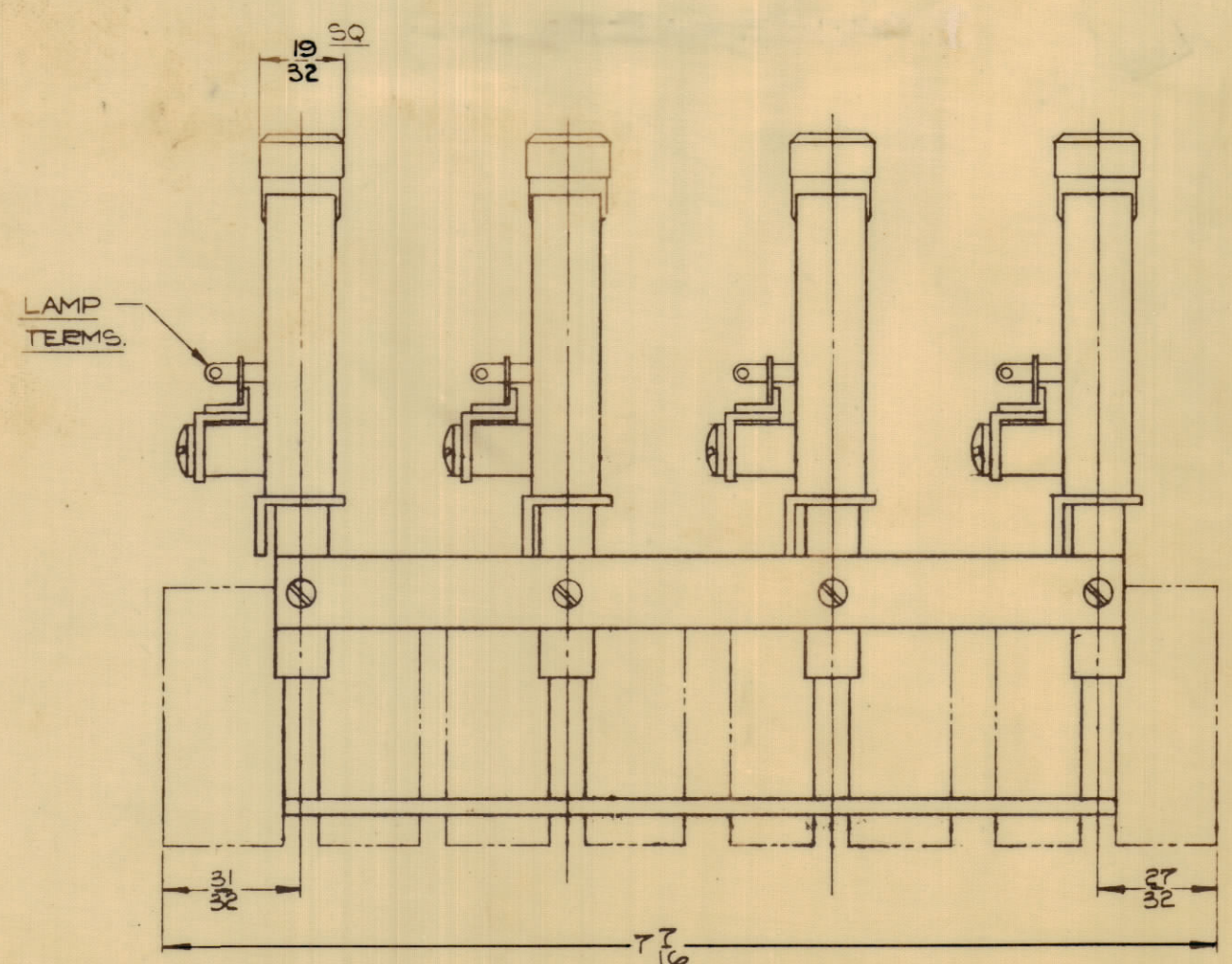
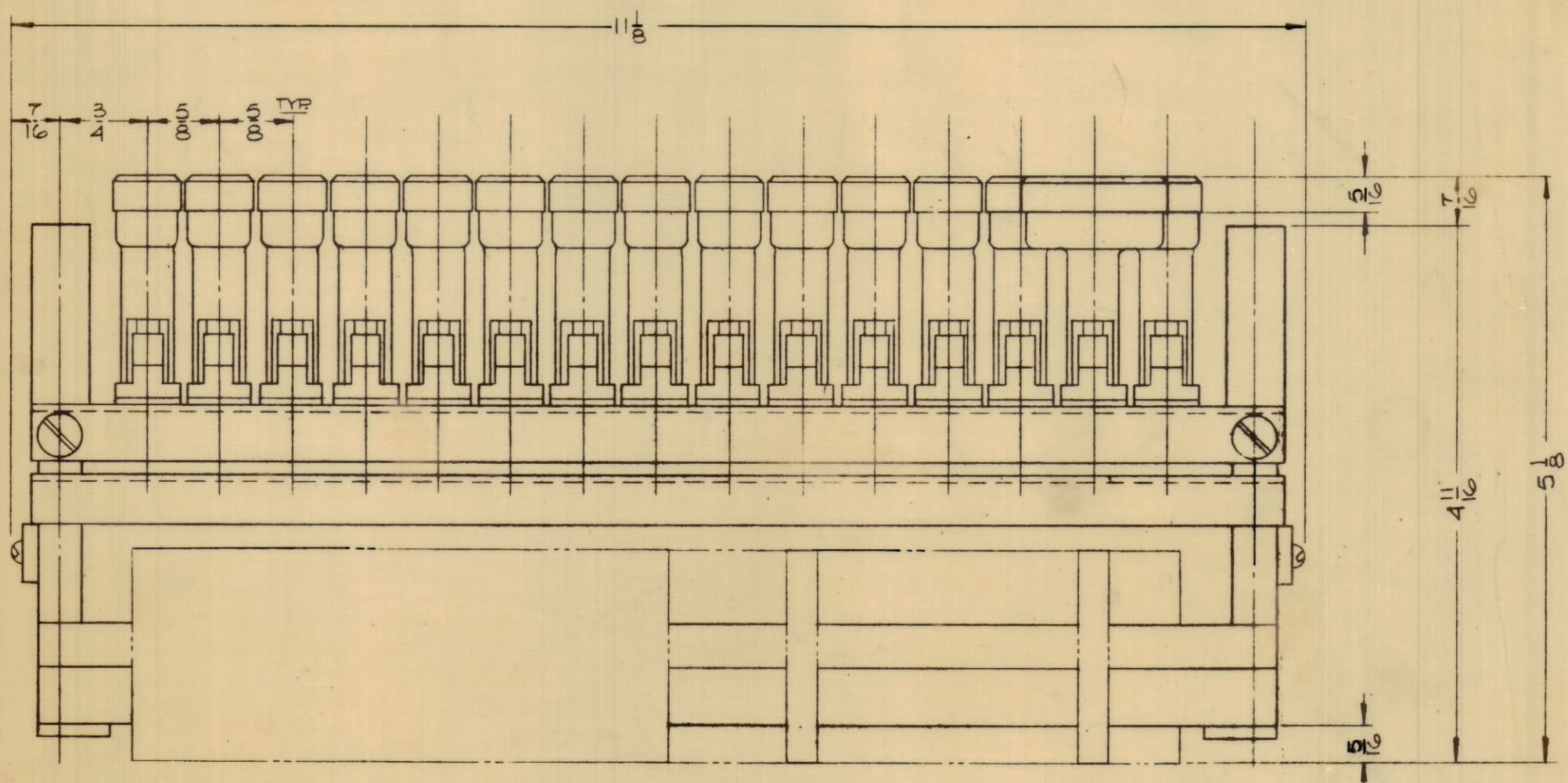
REVISIONS						
ZONE	SYM	DESCRIPTION	DATE	E.M.N. NO.	DRAFT	CHKD
		ORIGINAL RELEASE FOR PRODUCTION	4-7-65			
A		CONTACT RATING - SPARE BUTTON - MFG. CODE ADDED	6-18-65	14298	D.V.V.	



NOTES:

- CONTACTS: ROW 1 POS. 11, 12, 13, 15 BLANK
 3A POS. 1-10, 1A POS. 14 SEC. 2
 4A POS. 10, 7, 3A POS. 5, 9, 8, 2A POS. 3, 6
 1B POS. 14 SEC. 1, 1A POS. 2, 14, 4
 ROW 2
 3A POS. 1-15 SEC. 2
 3A POS. 8, 2A POS. 6, 7, 10, 11
 1A POS. 1, 4, 5, 9, 12, 13 SEC. 1
 ROW 3 POS. 11, 12 BLANK
 3A POS. 1-10, 13, 14, 15 SEC. 2
 2A POS. 7, 8, 9, 10, 1A POS. 4, 5, 6, SEC. 1
 ROW 4 POS. 10 - 15 BLANK
 3A POS. 1-9, SEC. 2
 2A POS. 8, 9, 1A POS. 5, 6, 7 SEC. 1
- LOCKOUT + INTERLOCK BETWEEN ROWS
- BUTTONS: WHITE TRANSLUCENT; POS. 14, ROW 1 DOUBLE RED TRANSLUCENT
- TOP FORM 'A' @ POS. SEC. 2 TO OPERATE AFTER OTHER FORM 'A's ARE MADE
- POS. 14, ROW 1 MOMENTARY ACTION, LOCK-LING

CONTACT RATING: 3A @ 115VAC, NON INDUCTIVE. SWITCH SUPPLIED WITHOUT LAMPS. USE B1110 PER REQ VOLTAGE
 SPARE BUTTONS - L1111-1(-)



SW 396 A

WARNING TO PERSONS RECEIVING THIS DRAWING

THE TECHNICAL MATERIEL CORPORATION claims proprietary right in the material disclosed hereon. This drawing is issued in confidence for engineering information only and may not be reproduced or used to manufacture anything shown hereon without permission from THE TECHNICAL MATERIEL CORPORATION to the user. This drawing is loaned for mutual assistance and is subject to recall at any time.

Property of:
THE TECHNICAL MATERIEL CORPORATION
 MAMARONECK, NEW YORK

1	RTPD	ASS'Y. NO.
O.T.Y./UNIT	MODEL USED ON	
SCALE	CODE	5401-365 (12DA-7701-759)

THE CONTENTS OF THIS DRAWING ARE THE EXCLUSIVE PROPERTY OF THE TECHNICAL MATERIEL CORP. ITS UNAUTHORIZED USE OR REPRODUCTION IN WHOLE OR IN PART IS STRICTLY FORBIDDEN.

REQ'D.	ITEM	PART NUMBER	DESCRIPTION	SYMBOL
EATON LIST OF MATERIAL				
MATERIAL			THE TECHNICAL MATERIEL CORP. MAMARONECK, NEW YORK	
FINISH			TITLE SWITCH ASSY. PROGRAMMER	
UNLESS OTHERWISE SPECIFIED DIMENSIONS ARE IN INCHES AND INCLUDE CHEMICALLY APPLIED OR PLATED FINISHES		DRAWN HCA	DATE 3-23-65	FINAL APPROVAL <i>[Signature]</i>
DECIMALS .X ± .05 .XX ± .01 .XXX ± .005		CHECKED <i>[Signature]</i>	DATE 4-12-65	DATE 4-17-65
FRACTIONS ± 1/64 ANGLES ± 0° 30'		ELECT. DES. <i>[Signature]</i>	DATE 4-17-65	DATE 4-17-65
TOLERANCES		MECH. DES. <i>[Signature]</i>	DATE 4-17-65	DATE 4-17-65
			SW396	
			A	
			SHEET	
			REV. LTR.	

NOTES