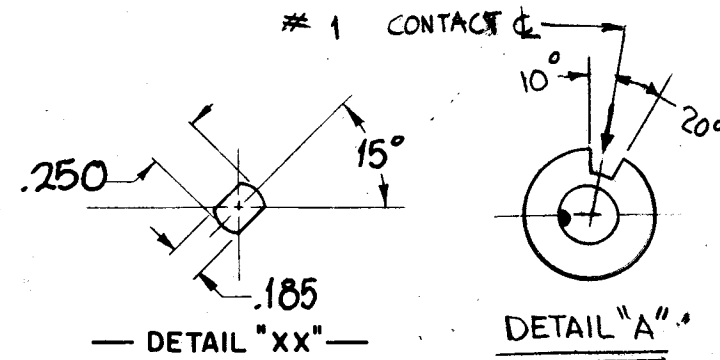


DESG.	DIMENSION	TOL.	REMARK
A	.750	±.015	SHAFT LG. FROM MTG. SURFACE
B	.250	±.005	BUSH. LG.
C	.437	±.015	FLAT LG. (IF REQ.)
D	15°	±2°	FLAT ANGLE (IF REQ.)
E	.218	±.002	FLAT (IF REQUIRED)
F	.531	±.010	KEY LOCATION (IF REQ.)
G	180°		KEY LOCATION (IF REQ.)
M	.125	±.010	
N	.125	±.093	REAR SCR. EXT.
Q	.125	±.031	REAR SHAFT EXT.
R	.250		1st SEC. SPACING

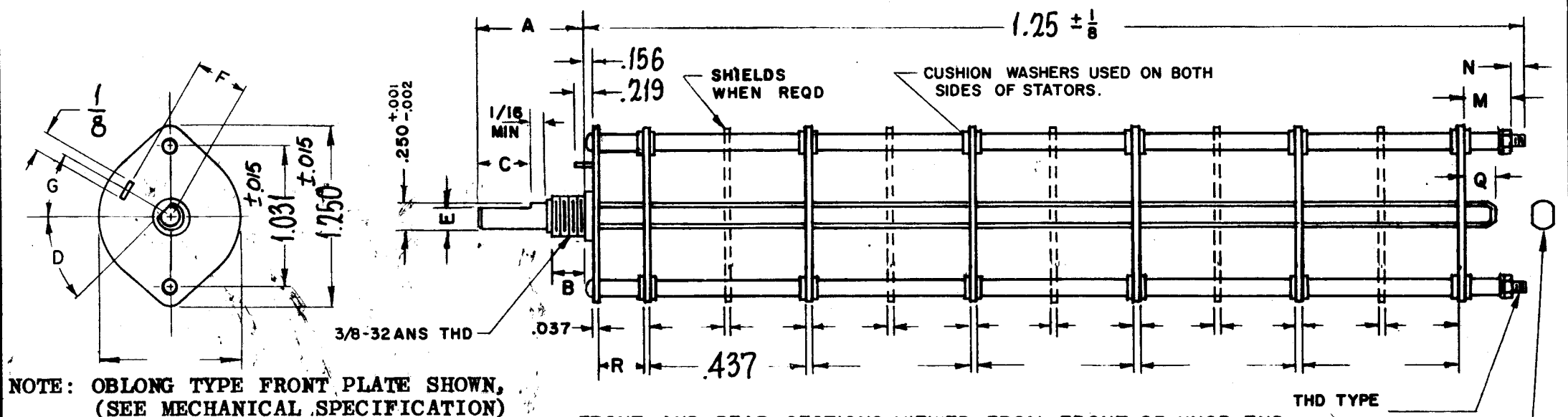
TMC PART NUMBER: SW-392 STAMP ON FRONT PLATE
FRONT PLATE SHAPE: ROUND ✓ OR OBLONG
MECHANICAL SPECIFICATIONS:
NUMBER OF SECTIONS- 2
NUMBER OF POSITIONS- 12
ANGLE OF THROW- 30°
CONTACTS:
SHORTING TYPE, SECTIONS 1st SEC. (SEE DETAIL "A")
NON SHORTING TYPE, SECTIONS 2nd SECTION
SILVER PLATED BRASS, SECTIONS
SILVER ALLOY, SECTIONS 1 & 2
WAFERS:
BAKELITE, SECTIONS 1 & 2
CERAMIC, SECTIONS
MYCALEX, SECTIONS
IMPREGNATION (IF REQ.)
FINISH REQUIREMENTS:
ARMY NAVY ✓ COMMERCIAL
SALT TEST (IF REQ.)
HARDWARE, TO BE SUPPLIED BY MANUFACTURER:
1 QUAN. 3/8 -32 NUTS 1/2 ACROSS FLATS
MATERIAL BRASS PLATING NICKEL
1 QUAN. 3/8 INTERNAL TOOTH LOCKWASHER
MATERIAL BRONZE PLATING NICKEL
ELECTRICAL SPECIFICATIONS:
MAXIMUM RATED VOLTAGE 110VAC
MAXIMUM RATED CURRENT 1

NOTE:
FOR S401-13 ("F" TYPE) SWITCHES, THE SHAFT POSITION MUST BE SPECIFIED ON DETAIL "XX" BELOW.



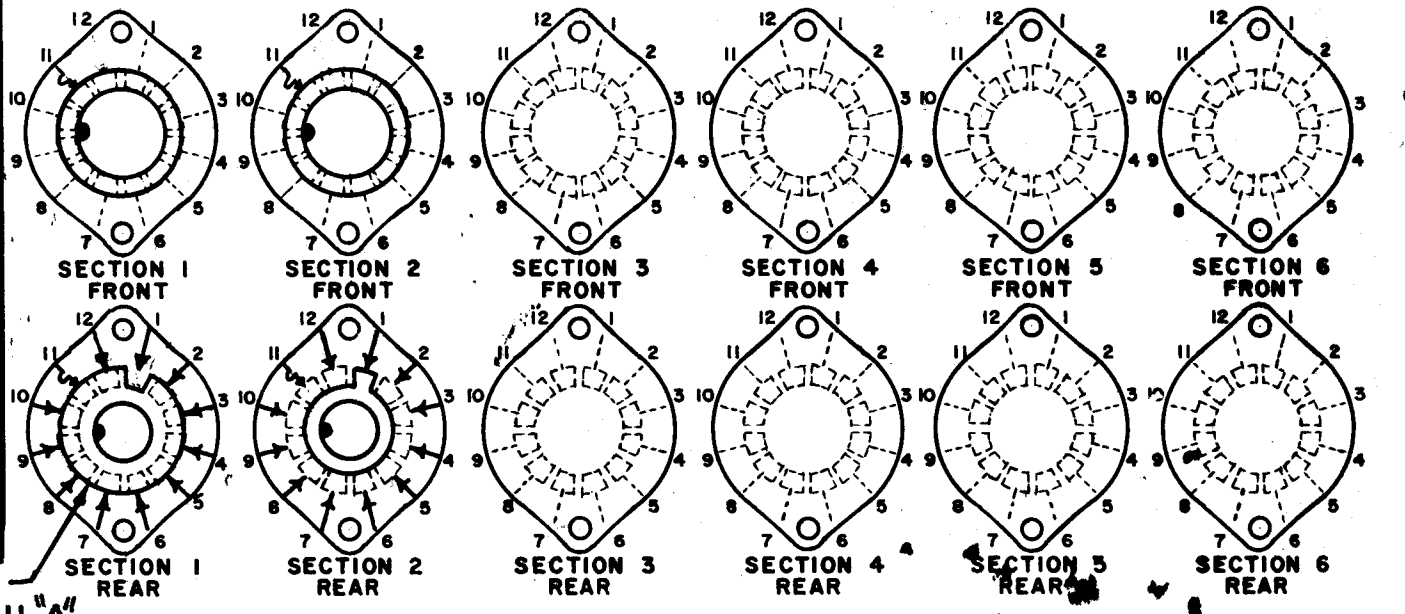
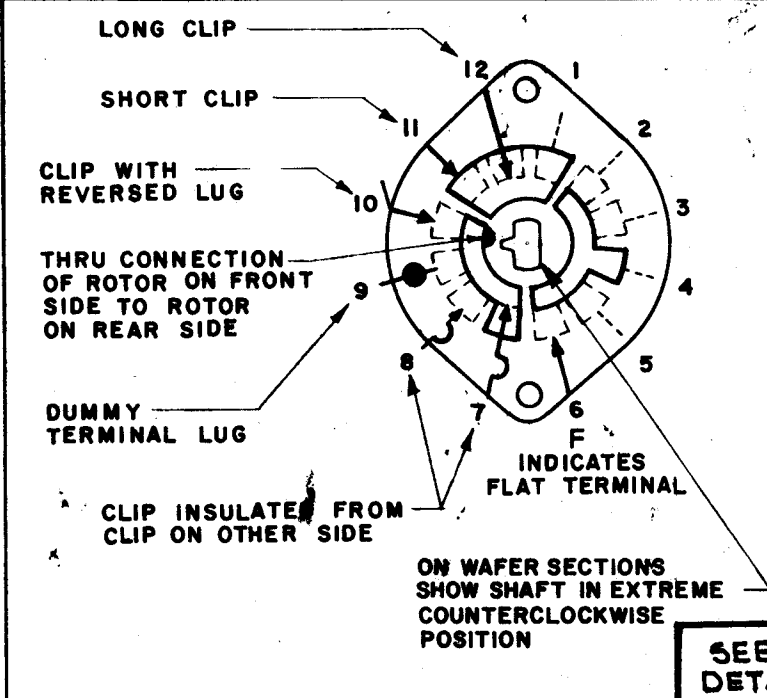
NO STOP REQUIRED.
NOTES

REVISIONS						
SYM	DESCRIPTION	DATE	E.M.N. NO.	DRAFT	CHKD	APPD
X1	ON CONTACTS: SHORT. TYPE WAS NONE, NON-SHORT. W. 2	4-6-65	X1	MB		
X2	DETAIL "A" ADDED	7-7-65	X2	CDL	DA	
Ø	ORIGINAL RELEASE FOR PRODUCTION	7/20/66		CV		JL



NOTE: OBLONG TYPE FRONT PLATE SHOWN, (SEE MECHANICAL SPECIFICATION)

FRONT AND REAR SECTIONS VIEWED FROM FRONT OR KNOB END OF SWITCH IN EXTREME COUNTERCLOCKWISE POSITION. SEE NOTE (DET. "XX")



SYMBOLS USED IN MARKING PRINT

SWITCH, ROTARY - 12 POINT TYPE

MATERIAL	THE TECHNICAL MATERIEL CORP.				
FINISH	BUDETTI MAMARONECK, NEW YORK E3129-SW2				
UNLESS OTHERWISE SPECIFIED DIMENSIONS ARE IN INCHES AND INCLUDE CHEMICALLY APPLIED OR PLATED FINISHES		DRAWN	DATE	FINAL APPROVAL	DATE
		SG		MB	7/20/66
		CHECKED	DATE		
		CDL			
DECIMALS	FRACTIONS	ELECT. DES.	DATE	SW392	
.X ± .05	± 1/64			Ø	
.XX ± .01	ANGLES	MECH. DES.	DATE	SHEET	
.XXX ± .005	± 0° 30'			REV. LTR.	

THE CONTENTS OF THIS DRAWING ARE THE EXCLUSIVE PROPERTY OF THE TECHNICAL MATERIEL CORP. ITS UNAUTHORIZED USE OR REPRODUCTION IN WHOLE OR IN PART IS STRICTLY FORBIDDEN.