

DESG.	DIMENSION	TOL.	REMARK
A	.75	±.015	SHAFT LG. FROM MTG. SURFACE
B	.375	±.005	BUSH. LG.
C	#	±.015	FLAT LG. (IF REQ.)
D	#	±2°	FLAT ANGLE (IF REQ.)
E	#	±.002	FLAT (IF REQUIRED)
F	.531	±.010	KEY LOCATION (IF REQ.)
G	180°		KEY LOCATION (IF REQ.)
M	5/32	±.010	
N	1/4	±.093	REAR SCR. EXT.
Q	.125	±.062	REAR SHAFT EXT.
R	1/4	±.010	1st SEC. SPACING

TMC PART NUMBER: SW- STAMP ON FRONT PLATE
 FRONT PLATE SHAPE: ROUND OR OBLONG

MECHANICAL SPECIFICATIONS:

NUMBER OF SECTIONS- 2

NUMBER OF POSITIONS- 2

ANGLE OF THROW- 30°

CONTACTS:

SHORTING TYPE, SECTIONS NO. 2

NON SHORTING TYPE, SECTIONS NO. 1

SILVER PLATED BRASS, SECTIONS Not App

SILVER ALLOY, SECTIONS NOS. 1 & 2

WAFERS:

BAKELITE, SECTIONS NOT USED

CERAMIC, SECTIONS Not USED

MYCALEX, SECTIONS NO. 1 & 2

IMPREGNATION (IF REQ.) NOT REQ.

FINISH REQUIREMENTS:

ARMY NAVY COMMERCIAL

SALT TEST (IF REQ.) 200 HOUR

HARDWARE, TO BE SUPPLIED BY MANUFACTURER:

1 QUAN. 3/8 -32 NUTS 1/2 ACROSS FLATS

MATERIAL PLATING

1 QUAN. 3/8 IN. INTERNAL TOOTH LOCKWASHER

MATERIAL PLATING

ELECTRICAL SPECIFICATIONS:

MAXIMUM RATED VOLTAGE 110 AC

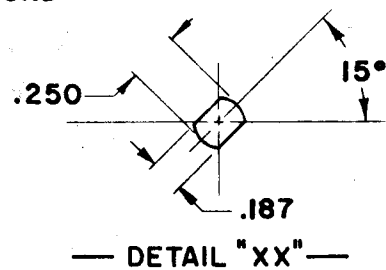
MAXIMUM RATED CURRENT 5 AMP. CARRY

0.5 AMP. BREAK

NOTE:

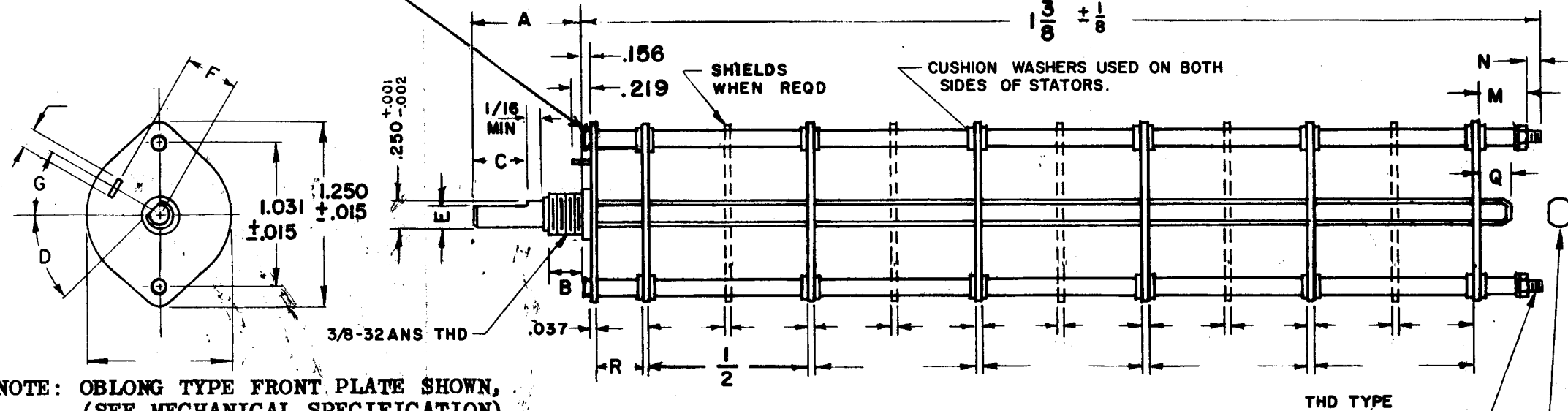
FOR S401-13 ("F" TYPE) SWITCHES, THE SHAFT POSITION MUST BE SPECIFIED ON DETAIL "XX" BELOW.

NOTE: DETENT TO BE 1 INCH POUND



NOTES

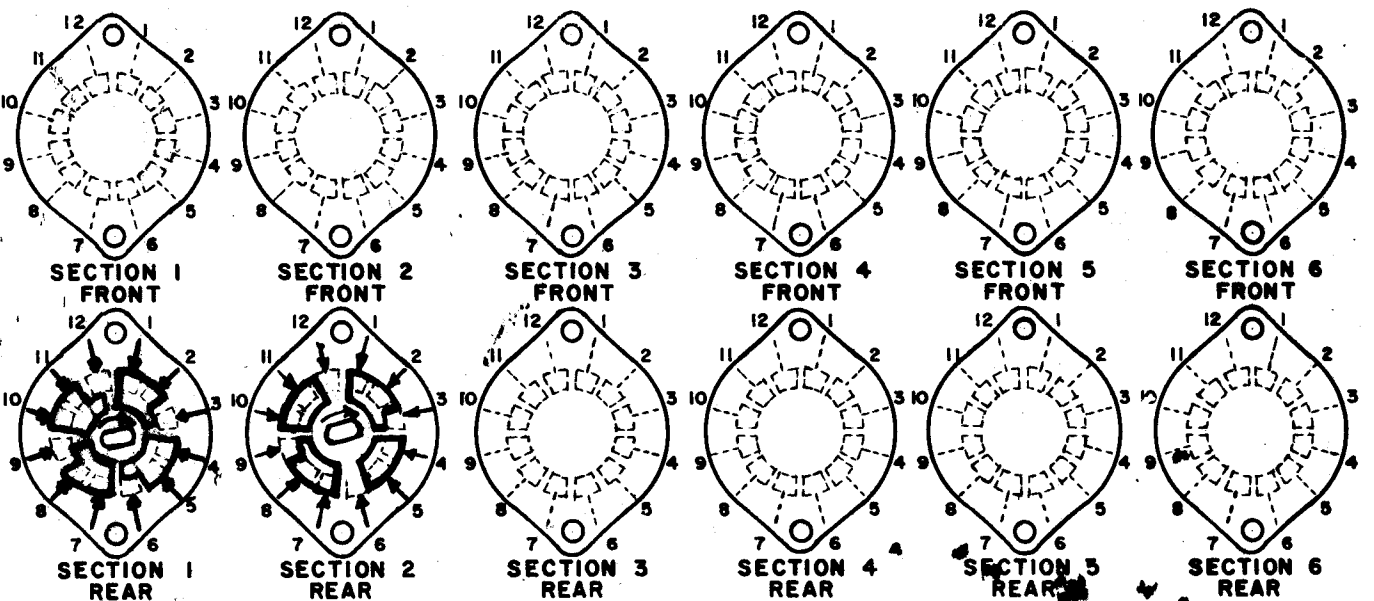
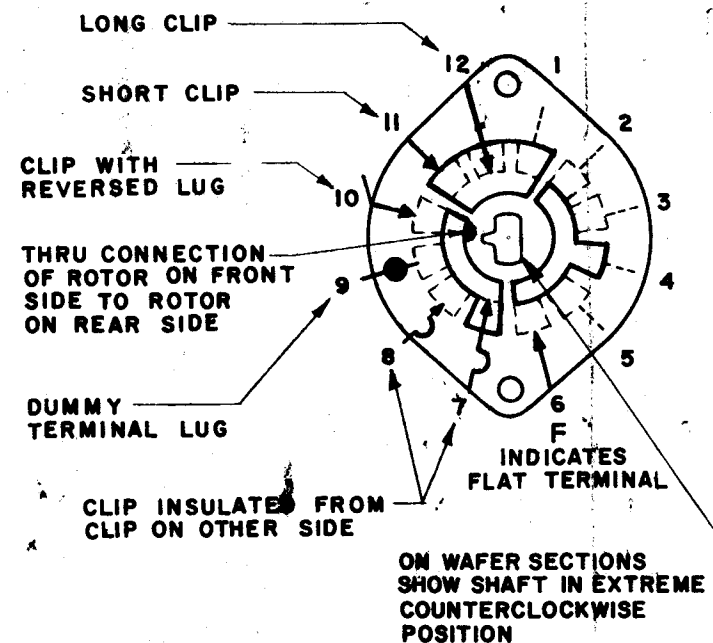
SWITCH SHALL BE SUPPLIED WITH TWO (2) FLAT HEAD SCREWS



NOTE: OBLONG TYPE FRONT PLATE SHOWN, (SEE MECHANICAL SPECIFICATION)

FRONT AND REAR SECTIONS VIEWED FROM FRONT OR KNOB END OF SWITCH IN EXTREME COUNTERCLOCKWISE POSITION.

SEE NOTE (DET. "XX")



SYMBOLS USED IN MARKING PRINT

1	HEIR-1	A
Q'TY./UNIT	MODEL USED ON	ASS'Y. NO.
SCALE	CODE	

THE CONTENTS OF THIS DRAWING ARE THE EXCLUSIVE PROPERTY OF THE TECHNICAL MATERIEL CORP. ITS UNAUTHORIZED USE OR REPRODUCTION IN WHOLE OR IN PART IS STRICTLY FORBIDDEN.

EATON SWITCH, ROTARY - 12 POINT TYPE

MATERIAL	THE TECHNICAL MATERIEL CORP. MAMARONECK, NEW YORK			
FINISH	TITLE SWITCH, ROTARY AFC ON, OFF			
UNLESS OTHERWISE SPECIFIED DIMENSIONS ARE IN INCHES AND INCLUDE CHEMICALLY APPLIED OR PLATED FINISHES	DRAWN	DATE	FINAL APPROVAL	
	J. MUNFORD	12-8-64	[Signature]	
DECIMALS .X ± .05 .XX ± .01 .XXX ± .005	CHECKED	DATE	ELECT. DES.	DATE
	[Signature]			
TOLERANCES	MECH. DES.		DATE	
FRACTIONS ± 1/64 ANGLES ± 0° 30'	J. MUNFORD		12-8-64	
SW-379			SHEET	REV. LTR.